

SunZia Wind

Landowner Update

DECEMBER 2023

Happy Holidays from Pattern Energy. We hope you are enjoying the holiday season! We are pleased to announce we are officially under full construction on both SunZia Wind South and SunZia Transmission. This achievement is a testament to the dedication and hard work of so many of you over the last two decades in your endeavor to bring wind development to the area.

SunZia Wind

We will be constructing the project on a Zone-by-Zone basis with current focus on zones 1 & 2 in the South. The following are anticipated construction start times by zone but may be adjusted based on work in the field.

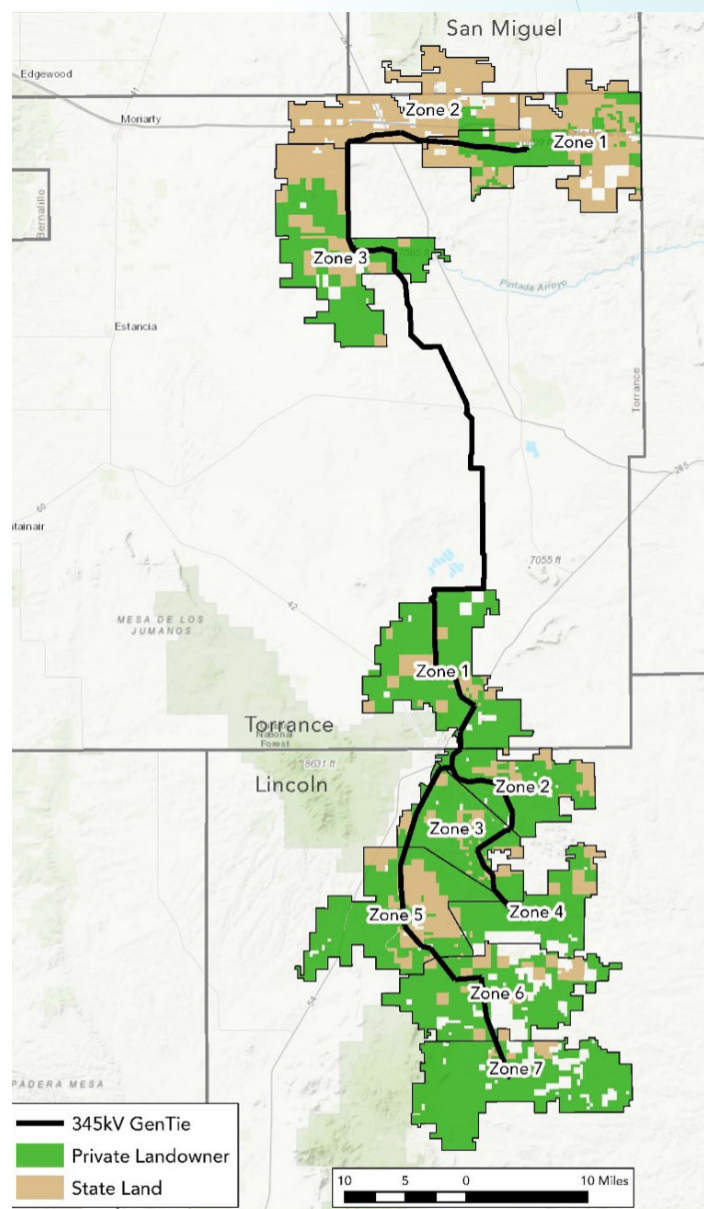
SunZia Wind South Construction Schedule

Zone	Start of Construction
1 & 2	September 2023
3 & 4	January 2024
5 & 6	August 2024
7	January 2025

SunZia Wind Construction Status

- | | |
|------------|---|
| Wind South | — Fully mobilized; 190 workers on site |
| | — Zone 1 – clearing and grubbing ongoing, 80% complete. Access, road and pad stripping and subgrade work in progress, approximately 30% complete. Foundation work underway, first foundation concrete pour scheduled early December. |
| | — Zone 2 – clearing and grubbing ongoing, 81% complete. Access, road and pad stripping and subgrade work in progress, 30% complete. |
| Wind North | — Set to begin construction in 2024 |
| | — Finalizing design |

We will be updating this information going forward and we expect to see significant progress in 2024. The first turbine deliveries are slated for September 2024 and will continue on a steady delivery schedule through 2025.



SunZia Wind Split by Project Area

	SunZia North San Miguel & Torrance	SunZia South Torrance & Lincoln	Total
Turbines Installed	242	647	916
Megawatts (MW)	1089	2426.4	515.4
Turbine Model	V163 - 4.5MW Hub Height: 104m Ground to Blade Tip: 609'	GE 3.6 - 154 Hub Height: 98m Ground to Blade Tip: 574'	

Miles of...

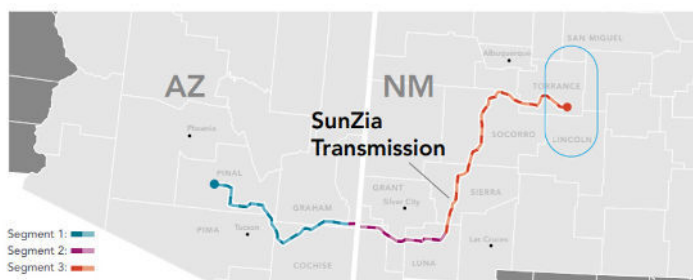
Access Road	210	442	652
34.5kV Cable	615	1617	2,232
Trenching	205	523	728
Overhead Collection	27	74	101
345kV Gen-Tie	61	74	135

Acres of Land...

Private Lands (acres)	70,606	285,606	356,212
State Lands (acres)	113,890	57,922	171,812
Total Acres	184,496	343,528	528,024

SunZia Transmission

We are fully mobilized and underway with construction activities across the transmission line. We have been actively building roads, laydown yards and receiving structures and wire for the project along with installing the first structures. Work on the transmission line is broken down into three segments with activities beginning in each zone by separate crews.



Segment maps are available at sunzia.com under the resource section.

SunZia Transmission Construction Status

Transmission Line	— Fully mobilized; 337 onsite workers — 9 crews, 4 in AZ and 5 in NM — Plant Salvage (AZ only), excavating foundations, installing roads, and receiving materials — First foundation poured — First structures installed
East HVDC Converter Station & AC Switchyard	— Fully mobilized; 274 onsite workers — Valve Hall 1 & 2 foundations complete — Slab work underway
West HVDC Con- verter Station	— Fully mobilized; 52 onsite workers — Valve Hall 1 piers in progress — Trenching & installing main cables

Structures

Lattice Structure Count	1991
Monopole Structure Count	171

Land

Land	Miles	%
BLM*	173.5	31.4 %
Bureau of Reclamation*	0.4	0.1 %
USFWS*	11.4	2.1 %
AZ State Land	134.1	24.2 %
NM State Land	93	16.8 %
Private Landowners	140.6	25.4 %
Total Land	553	100 %

*Total Federal Land: 33.6% of the transmission line runs through Federal land; Approximately 185.3 miles

Contact Us

We know construction can be disruptive to your everyday lives and we thank you for your patience as work towards project completion in 2026.

If you have any questions or concerns, please feel free to contact Kyle Trojacek who is the Field Land Manager for SunZia Wind at 817.600.1344 or our Corona Representative Barbara Sultemeier at Barbara.Sultemeier@patternenergy.com.