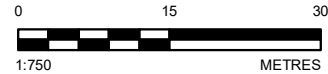
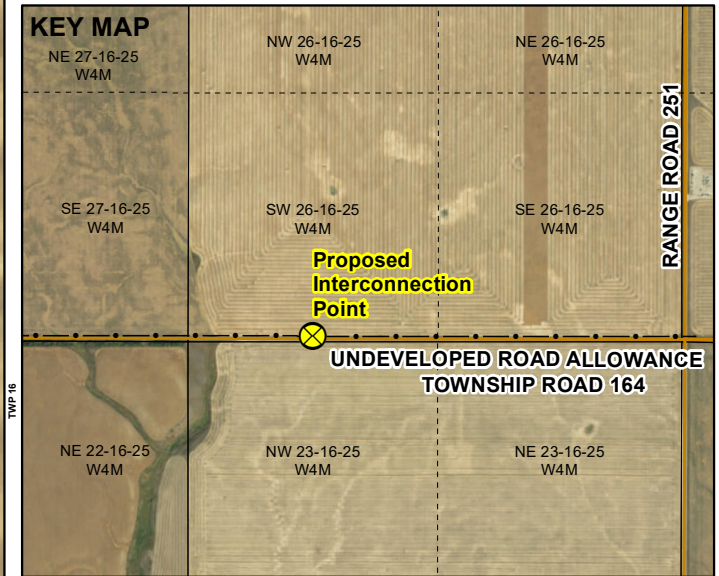


LEGEND

- EXISTING TRANSMISSION LINE
- LOCAL ROAD
- ⊗ PROPOSED INTERCONNECTION POINT
- ⊕ PROPOSED NEW POLE LOCATION
- PROPOSED TRANSMISSION INTERCONNECTION LINE
- ▨ PROPOSED SUBSTATION (SEPARATE APPLICATION)



REFERENCE(S)

1. PROJECT COMPONENTS OBTAINED FROM RES, JANUARY 2021.
2. IMAGERY COPYRIGHT © 20180830 ESRI AND ITS LICENSORS. SOURCE: VULCAN2018, VULCAN COUNTY. USED UNDER LICENSE, ALL RIGHTS RESERVED.
3. ALBERTA DIGITAL BASE DATA MAY BE OBTAINED FROM GEOGRATIS, © DEPARTMENT OF NATURAL RESOURCES CANADA. ALL RIGHTS RESERVED, ALTALIS LTD. © GOVERNMENT OF ALBERTA 2016. ALL RIGHTS RESERVED. OR IHS ENERGY INC. PROJECTION: UTM ZONE 12 DATUM: NAD 83

CLIENT
RENEWABLE ENERGY SYSTEMS CANADA INC.

PROJECT
ENTERPRISE SOLAR

TITLE
PROPOSED TRANSMISSION INTERCONNECTION

| CONSULTANT | YYYY-MM-DD | 2021-01-12 |
|------------|------------|------------|
| DESIGNED | BS | |
| PREPARED | LMS | |
| REVIEWED | BS | |
| APPROVED | TC | |

| PROJECT NO. | PHASE | REV. | FIGURE |
|-------------|-------|------|--------|
| 1895548 | 4000A | 0 | 1 |