

**BEFORE THE NEW MEXICO PUBLIC REGULATION COMMISSION**

IN THE MATTER OF THE CORONA WIND )  
COMPANIES' JOINT APPLICATION FOR THE )  
LOCATION OF THE CORONA WIND PROJECTS )  
AND THE CORONA GEN-TIE SYSTEM IN )  
LINCOLN, TORRANCE AND GUADALUPE )  
COUNTIES PURSUANT TO THE PUBLIC UTILITY )  
ACT, NMSA 1978, §62-9-3 )

Case No. 18-\_\_\_\_\_

ANCHO WIND LLC, COWBOY MESA LLC, DURAN )  
MESA LLC, RED CLOUD WIND LLC, TECOLOTE )  
WIND LLC, VIENTO LOCO LLC, )  
)  
)  
)

JOINT APPLICANTS. )

---

**DIRECT TESTIMONY OF**

**CRYSTAL COFFMAN**

**BEFORE THE NEW MEXICO PUBLIC REGULATION COMMISSION**

IN THE MATTER OF THE CORONA WIND )  
COMPANIES' JOINT APPLICATION FOR THE )  
LOCATION OF THE CORONA WIND PROJECTS )  
AND THE CORONA GEN-TIE SYSTEM IN )  
LINCOLN, TORRANCE AND GUADALUPE )  
COUNTIES PURSUANT TO THE PUBLIC UTILITY )  
ACT, NMSA 1978, §62-9-3 )

Case No. 18-DODD/S-UT

ANCHO WIND LLC, COWBOY MESA LLC, DURAN )  
MESA LLC, RED CLOUD WIND LLC, TECOLOTE )  
WIND LLC, VIENTO LOCO LLC, )

JOINT APPLICANTS. )

---

DIRECT TESTIMONY OF

CRYSTAL COFFMAN

ON BEHALF OF THE CORONA WIND COMPANIES

Case No. 18 - \_\_\_\_\_ - UT  
Before the New Mexico Public Regulation Commission  
Direct Testimony of Crystal Coffman  
on Behalf of the Corona Wind Companies

1    **I.    INTRODUCTION AND QUALIFICATIONS**

2    **Q.    PLEASE STATE YOUR NAME AND BUSINESS ADDRESS.**

3    A.    My name is Crystal Coffman. My business address is 1201 Louisiana St. Suite 3200  
4        Houston, Texas.

5    **Q.    BY WHOM ARE YOU EMPLOYED AND WHAT IS YOUR POSITION?**

6    A.    I am employed by Pattern Energy Group LP (together, with Pattern Energy Group 2 LP,  
7        “Pattern Development”) as a Business Development Manager.

8    **Q.    PLEASE DESCRIBE YOUR EDUCATION BACKGROUND AND EXPERIENCE.**

9    A.    I have a Bachelor of Science degree in both Architecture and Civil Engineering from Texas  
10       Tech University and a Master of Business Administration degree from Rice University. I  
11       have worked in the renewables industry for Pattern Development or its predecessor,  
12       Babcock & Brown, for over 11 years and have experience in both Project Finance and  
13       Development. I played a direct role in the financing and development of over 1,500  
14       megawatts (“MW”) of wind farms in operation to date. I am currently the Development  
15       Manager for the 220 MW Grady Wind Energy Center in Curry County, New Mexico which  
16       is scheduled for operation in 2019.

17   **Q.    PLEASE DESCRIBE THE DUTIES AND RESPONSIBILITIES FOR YOUR CURRENT POSITION.**

18   A.    As a Manager in Business Development my duties include the following:

- 19       • Coordinating activities and communicating project objectives among the Permitting,  
20       Land, Power Marketing, Transmission, Meteorology, Engineering and Construction,  
21       Legal, Finance and Accounting teams.

Case No. 18 - \_\_\_\_\_ - UT  
Before the New Mexico Public Regulation Commission  
Direct Testimony of Crystal Coffman  
on Behalf of the Corona Wind Companies

- 1 • Ensuring timely decisions are made in collaboration with other stakeholders of the
- 2 development.
- 3 • Regularly reviewing the risks, schedule and budget progress of a project.
- 4 • Actively negotiating with permitting agencies, landowners, local and state
- 5 governmental agencies with assistance and guidance of my colleagues to facilitate the
- 6 development of renewable energy projects.
- 7 • Delivering high-quality, low-risk, construction-ready projects.

8 **Q. ON WHOSE BEHALF ARE YOU APPEARING IN THIS PROCEEDING?**

9 A. I am testifying on behalf of the joint applicants, Ancho Wind LLC, Cowboy Mesa LLC,  
10 Duran Mesa LLC, Red Cloud Wind LLC, Tecolote Wind LLC, and Viento Loco LLC,  
11 (collectively, the “Corona Wind Companies” or the “Joint Applicants”) in support of the  
12 joint application for location control approval before the New Mexico Public Regulation  
13 Commission (“Commission”) pursuant to NMSA 1978, §§62-9-3, 62-9-3 and Commission  
14 Rule 17.9.592 NMAC (“Joint Application”).

15 **Q. WHAT IS THE PURPOSE OF YOUR TESTIMONY?**

16 A. First, I will provide an overview of the Pattern Development and the Joint Applicants.  
17 Then, I will talk about the proposed 2200 MW of wind generation of the Joint Applicants’  
18 wind energy facilities (“Corona Wind Projects”) and their relationship with the 345-  
19 kilovolt (“kV”) transmission system and associated transmission facilities, including a 180-  
20 foot right-of-way (“ROW”) located within a 1-mile-wide corridor (collectively, “Corona  
21 Gen-Tie System” or “Gen-Tie System”). Lastly, I will summarize Pattern Development’s  
22 public outreach, and our coordination with local, state, and federal agencies.

Case No. 18 - \_\_\_\_\_ - UT  
Before the New Mexico Public Regulation Commission  
Direct Testimony of Crystal Coffman  
on Behalf of the Corona Wind Companies

1   **Q.   WHAT SUBJECTS WILL OTHER WITNESSES ADDRESS?**

2   A.   The Joint Application will have the supporting testimony of the following witnesses:

- 3       •   Ward Marshall of Pattern Development will describe renewable energy markets in the  
4           west part of the country, the market benefits of the projects, the role of New Mexico as  
5           an energy exporter, and the community support for the Corona Wind Projects and Gen-  
6           Tie System.
- 7       •   Adam Cernea Clark of Pattern Development will provide more detailed testimony  
8           about the environmental values which are incorporated into the planning, design,  
9           construction, and operation of our projects. He will also describe the Corona Wind  
10          Projects' and the Gen-Tie System's commitment to comply with federal, state, and  
11          local law.
- 12      •   Christopher Knopp of Burns & McDonnell Engineering Company, Inc. ("Burns &  
13          McDonnell") will provide detailed testimony about the environmental, biological,  
14          cultural, and archeological studies performed at the location of the Corona Gen-Tie  
15          System and the Corona Wind Projects.
- 16      •   Derek Price of Pattern Development will describe the technical design of the Gen-Tie  
17          System including design conditions, ROW determination, structure spans and  
18          footprints, and transmission structure design.
- 19      •   John Tysseling of Moss Adams LLP will describe the fiscal and economic impacts of  
20          the Corona Wind Projects and the Gen-Tie System.
- 21      •   Stan Gray of Pattern Development will give a technical description of the Corona Gen-  
22          Tie System and interconnection strategy for the Corona Wind Projects.

Case No. 18 - \_\_\_\_\_ - UT  
Before the New Mexico Public Regulation Commission  
Direct Testimony of Crystal Coffman  
on Behalf of the Corona Wind Companies

1   **Q.   HAVE YOU PREVIOUSLY TESTIFIED BEFORE ANY REGULATORY AUTHORITIES?**

2   A.   No.

3   **II.   OVERVIEW OF PATTERN DEVELOPMENT, PATTERN ENERGY GROUP, INC., AND THE**  
4       **JOINT APPLICANTS**

5   **Q.   PLEASE PROVIDE SOME BACKGROUND OF PATTERN DEVELOPMENT.**

6   A.   Patter Development is a leading developer of renewable energy and transmission assets  
7       throughout the world. With a global footprint spanning all over the United States, Canada,  
8       Mexico, Chile and Japan, the highly-experienced Pattern Development team has brought  
9       more than 5,000 MW of renewable power projects to market. Pattern Development's  
10      headquarters are in San Francisco, California.

11     Pattern Development's affiliate, Pattern Energy Group Inc., ("PEGI"), is an independent  
12     power company listed on the NASDAQ Global Select Market and Toronto Stock Exchange  
13     that owns and operates wind power facilities.

14     PEGI has a portfolio of renewable energy facilities in the United States, Puerto Rico,  
15     Canada, and Chile that use proven, best-in-class technology. PEGI's headquarters are co-  
16     located with Pattern Development in San Francisco, California.

17     Pattern Development may be thought of as the company that brings projects to the point of  
18     operation while PEGI may be thought of as the company that operates projects once they  
19     are built.

20   **Q.   PLEASE PROVIDE AN OVERVIEW OF THE JOINT APPLICANTS.**

21   A.   The Corona Wind Companies are limited liability companies, organized under the laws of  
22     the State of Delaware and are wholly owned subsidiaries of Pattern Development. Each of

Case No. 18 - \_\_\_\_\_ - UT  
Before the New Mexico Public Regulation Commission  
Direct Testimony of Crystal Coffman  
on Behalf of the Corona Wind Companies

1 the Corona Wind Companies will obtain the land rights and permits needed for the  
2 development and construction of the Corona Wind Projects and the Corona Gen-Tie  
3 System.

4 **Q. WILL PATTERN DEVELOPMENT IMPLEMENT COMPANY ENVIRONMENTAL POLICIES OR**  
5 **PRACTICES REGARDING THE CORONA WIND PROJECTS AND THE CORONA GEN-TIE**  
6 **SYSTEM?**

7 A. Yes. Pattern Development actively participates in wind industry efforts to understand,  
8 study, and minimize the environmental impacts of wind energy and to advance the  
9 development of technology and best practices. Pattern Development also routinely  
10 implements voluntary best management practices and mitigation strategies that further its  
11 environmental values. This commitment is outlined in the Statement of Environmental  
12 Values, which is furthered explained in the Direct Testimony of Adam Cernea Clark.

13 **Q. WHAT ARE THE JOINT APPLICANTS' ROLE IN DEVELOPING THE CORONA WIND**  
14 **PROJECTS AND THE CORONA GEN-TIE SYSTEM?**

15 A. The Corona Wind Companies will obtain the necessary real estate rights, federal, state, and  
16 local permits, power purchase agreements, construction contracts, equipment contracts and  
17 financing agreements needed to develop, construct, and operate the Corona Wind Projects  
18 and the Gen-Tie System.

19 **Q. WHO WILL CONSTRUCT THE CORONA WIND PROJECTS AND THE CORONA GEN-TIE**  
20 **SYSTEM?**

21 A. Construction will be managed by Pattern Development's in-house construction group,  
22 which has successfully completed over 5,000 MW of wind projects including the

Case No. 18 - \_\_\_\_\_ - UT  
Before the New Mexico Public Regulation Commission  
Direct Testimony of Crystal Coffman  
on Behalf of the Corona Wind Companies

Broadview wind farms in Curry County, New Mexico. Construction of the Corona Wind Projects will be performed under one or more balance of plant agreements by one or more qualified third-party contractors.

**Q. WHAT COMMISSION APPROVALS ARE THE JOINT APPLICANTS REQUESTING?**

A. The Corona Wind Companies request that the Commission approve the location of the Corona Wind Projects and the Corona Gen-Tie System in Lincoln, Torrance and Guadalupe Counties in New Mexico pursuant to NMSA 1978, §§62-9-3, 62-9-3.2 and Commission Rule 17.9.592 NMAC.

**Q. ARE THE CORONA WIND COMPANIES REQUESTING THE COMMISSION ISSUE A PUBLIC CERTIFICATE OF CONVENIENCE AND NECESSITY?**

A. No. Neither the Joint Applicants, Pattern Development nor PEGI entities are or will be public utilities if the proposed location permits are granted and the Corona Wind Projects and Gen-Tie System constructed.

**III. THE CORONA WIND PROJECTS**

**Q. PLEASE DESCRIBE THE CORONA WIND PROJECTS.**

A. The Corona Wind Projects will consist of up to 2200 MW of wind power facilities. The Corona Wind Projects will be located in Lincoln, Torrance and Guadalupe Counties in New Mexico and will encompass approximately 300,000 acres of private and state land within the three counties ("Corona Wind Project Area"). The Corona Wind Projects will be interconnected to one of SunZia Transmission LLC's two 500-kV alternative current transmission lines ("SunZia Project") via the Corona Gen-Tie System. Please refer to the



Case No. 18 - \_\_\_\_\_ - UT  
Before the New Mexico Public Regulation Commission  
Direct Testimony of Crystal Coffman  
on Behalf of the Corona Wind Companies

1 Direct Testimony of Derek Price for more detail information regarding the Corona Wind  
2 Projects and Gen-Tie System interconnection.

3 To produce the desired energy, it is anticipated that there will be up to 950 wind turbines  
4 with a nameplate capacity ranging from 2.3 MW to 3.0 MW. Each of the turbines in the  
5 Corona Wind Projects will be connected by 34.5-kV collection lines to new substations  
6 (“Generation Project Substations”) to be located within the Corona Wind Project Area.

7 **Q. IS THE PROPOSED LOCATION WELL-SUITED FOR WIND ENERGY GENERATION?**

8 A. Yes. Exhibit CC-1 shows the average wind speed across New Mexico at 80 meters above  
9 ground level (the approximate height of an average wind turbine). The Corona Wind  
10 Projects are at the intersection of Lincoln, Torrance, and Guadalupe Counties where some  
11 of the highest wind speeds are shown. Pattern Development expects to pair industry leading  
12 wind turbine equipment with the strong wind resource in the Corona Wind Project Area to  
13 maximize energy generation at the Corona Wind Projects.

14 **Q. HOW WAS THE CORONA WIND PROJECT AREA CHOSEN FOR THE CORONA WIND**  
15 **PROJECTS?**

16 A. As discussed previously, the Corona Wind Projects are in an area with a wind resource  
17 superior to much of the rest of the State of New Mexico. After starting development for its  
18 Broadview and Grady projects in Curry County, New Mexico, Pattern Development began  
19 looking for more opportunities to leverage its experience elsewhere in the state. Once  
20 Pattern Development recognized the favorable resource at the location for the Corona Wind  
21 Projects, it also recognized that this site has relatively low numbers of sensitive species and  
22 natural resources, support from private landowners for wind development, large areas of

Case No. 18 - \_\_\_\_\_ - UT  
Before the New Mexico Public Regulation Commission  
Direct Testimony of Crystal Coffman  
on Behalf of the Corona Wind Companies

1 buildable terrain, and close proximity to the eastern terminus of the proposed SunZia  
2 Project.

3 **Q. WHERE WILL THE WIND TURBINES BE LOCATED WITHIN THE CORONA WIND PROJECT**  
4 **AREA?**

5 A. Please refer to Exhibit CC-2 for a preliminary project layout. It is important to note that  
6 final siting decisions for each wind turbine will be made only after completing site  
7 suitability studies. This process could result in changes in the precise locations of the  
8 turbines but will not take any of the turbines outside of the Corona Wind Project Area  
9 where we have conducted extensive environmental impact studies.

10 **Q. HOW WILL THE CORONA WIND PROJECTS CONNECT TO THE SUNZIA PROJECT?**

11 A. As previously mentioned, each of the Corona Wind Projects will construct Generation  
12 Project Substations to be located within the Corona Wind Project Area. Approximately 80  
13 miles of 345-kV transmission lines will connect each Generation Project Substations to the  
14 Eastern terminus of the SunZia Project point of interconnect ("SunZia East"). The technical  
15 specifics of the Corona Gen-Tie System (e.g., alignment, structure types) are discussed in  
16 detail in the Direct Testimony of Derek Price. Each of the Corona Wind Companies will  
17 enter into an Interconnection Agreement with the SunZia Project to transmit its energy  
18 output through the SunZia Project.

19 **Q. WHAT IS THE TIMEFRAME FOR CONSTRUCTION OF THE CORONA WIND PROJECTS?**

20 A. Construction of the Corona Wind Projects is expected to begin in 2019 once all the  
21 necessary permits to begin construction are in hand. The Corona Wind Projects are  
22 expected to be in service by the end of 2020.

Case No. 18 - \_\_\_\_\_ - UT  
Before the New Mexico Public Regulation Commission  
Direct Testimony of Crystal Coffman  
on Behalf of the Corona Wind Companies

1 **Q. HOW WILL DECOMMISSIONING OF THE WIND TURBINES BE HANDLED AT THE END OF THE**  
2 **CORONA WIND PROJECT'S LIFE?**

3 A. The Corona Wind Projects will be located on either privately held lands or lands controlled  
4 by the State of New Mexico. All the private real estate agreements provide for the removal  
5 and disposal of any above ground equipment after the real estate agreement has expired.  
6 The cost of the decommissioning activities under the Corona Wind Projects agreements  
7 shall be securitized and borne by the owner of the Corona Wind Projects. Similar to the  
8 agreements for private land control, the owners of the Corona Wind Projects shall be  
9 responsible for the removal and all costs associated with the removal of the equipment  
10 during decommissioning on state lands in Lincoln, Torrance, and Guadalupe Counties.

11 **IV. THE CORONA GEN-TIE SYSTEM**

12 **Q. PLEASE DESCRIBE THE CORONA GEN-TIE SYSTEM?**

13 A. The Corona Gen-Tie System is a 345-kV transmission system and associated transmission  
14 facilities, including a 180-foot ROW located within a 1-mile-wide corridor. The Corona  
15 Gen-Tie System will be located at the Corona Wind Project Area. Approximately 80 miles  
16 of the 345-kV transmission lines will connect each of the Corona Wind Projects' substation  
17 to SunZia East. See the Direct Testimony of Derek Price for more detail information. The  
18 electricity generated by the Corona Wind Projects will be transmitted through the SunZia  
19 Project to be sold to out-of-state purchasers located in Arizona, California, and/or Utah  
20 under Power Purchase Agreements. Additionally, we continue to evaluate if there is also a  
21 market for some of the electricity within New Mexico.

22 **Q. WHERE WILL THE CORONA GEN-TIE SYSTEM BE LOCATED?**

Case No. 18 - \_\_\_\_\_ - UT  
Before the New Mexico Public Regulation Commission  
Direct Testimony of Crystal Coffman  
on Behalf of the Corona Wind Companies

1 A. As mentioned above, the Gen-Tie System will be located on private and state land within  
2 the Corona Wind Project Area.

3 **Q. WHAT IS THE TIMEFRAME FOR CONSTRUCTION OF THE CORONA GEN-TIE SYSTEM?**

4 A. The Corona Gen-Tie System is expected to begin construction in 2019 and be in service  
5 by the end of 2020.

6 **V. PUBLIC OUTREACH AND SUPPORT AND GOVERNMENT COORDINATION**

7 **Q. WERE LOCAL COMMUNITIES AND OFFICIAL INFORMED ABOUT THE CORONA WIND**  
8 **PROJECTS AND THE CORONA GEN-TIE SYSTEM?**

9 A. Yes, Pattern Development representatives and representatives of the Corona Wind  
10 Companies have attended several public meetings in Torrance and Lincoln Counties and  
11 have had several conversations with local and state officials representing Torrance,  
12 Lincoln, and Guadalupe Counties.

13 **Q. HAVE THE CORONA WIND COMPANIES INFORMED THE PUBLIC ABOUT THE CORONA**  
14 **WIND PROJECTS AND THE CORONA GEN-TIE SYSTEM?**

15 A. Yes. In addition to several public meetings, Pattern Development representatives have met  
16 individually with many local landowners about the Corona Wind Projects and Gen-Tie  
17 System.

18 **Q. DO THE CORONA WIND COMPANIES HAVE THE SUPPORT OF THE WIND PROJECTS SITES'**  
19 **LANDOWNERS AND THE STATE OF NEW MEXICO?**

20 A. Yes, over 220,000 acres of private land have been leased from private landowners and over  
21 21,000 acres are in the process of being leased from the State of New Mexico. These leases  
22 have been negotiated and signed by the landowners or the State of New Mexico at their

Case No. 18 - \_\_\_\_\_ - UT  
Before the New Mexico Public Regulation Commission  
Direct Testimony of Crystal Coffman  
on Behalf of the Corona Wind Companies

discretion. Please see Exhibit CC-3 for letters of support for the Corona Wind Projects and Gen-Tie System written by private landowners.

**Q. DO THE CORONA WIND COMPANIES AND THE CORONA GEN-TIE SYSTEM HAVE THE SUPPORT OF BUSINESS LEADERS AS WELL AS LOCAL, STATE AND NATIONAL OFFICIALS?**

A. As discussed in the Direct Testimony of John Tysseling, the Corona Wind Projects and Corona Gen-Tie System expect to produce economic benefits for local businesses. Please see Exhibit CC-4 for letters of support for the Corona Wind Projects and Gen-Tie System written by local business leaders as well as local, state and national officials.

**XI. CONCLUSION**

**Q. PLEASE SUMMARIZE YOUR TESTIMONY.**

A. As established in this testimony, Pattern Development is a global leader developer of renewable energy projects. The Joint Applicants will benefit from this experience and expertise to bring a state of the art wind project and its respective gen-tie to New Mexico. The Corona Wind Projects and Corona Gen-Tie System also have the public support for the socioeconomic benefits the Corona Wind Projects and Corona Gen-Tie System will bring to this area of New Mexico.

**Q. DOES THIS CONCLUDE YOUR TESTIMONY AT THIS TIME?**

A. Yes, it does.

**BEFORE THE NEW MEXICO PUBLIC REGULATION COMMISSION**

IN THE MATTER OF THE CORONA WIND )  
COMPANIES' JOINT APPLICATION FOR THE )  
LOCATION OF THE CORONA WIND PROJECTS )  
AND THE CORONA GEN-TIE SYSTEM IN )  
LINCOLN, TORRANCE AND GUADALUPE )  
COUNTIES PURSUANT TO THE PUBLIC UTILITY )  
ACT, NMSA 1978, §62-9-3 )  
 )  
ANCHO WIND LLC, COWBOY MESA LLC, DURAN )  
MESA LLC, RED CLOUD WIND LLC, TECOLOTE )  
WIND LLC, VIENTO LOCO LLC, )  
 )  
 )  
JOINT APPLICANTS. )

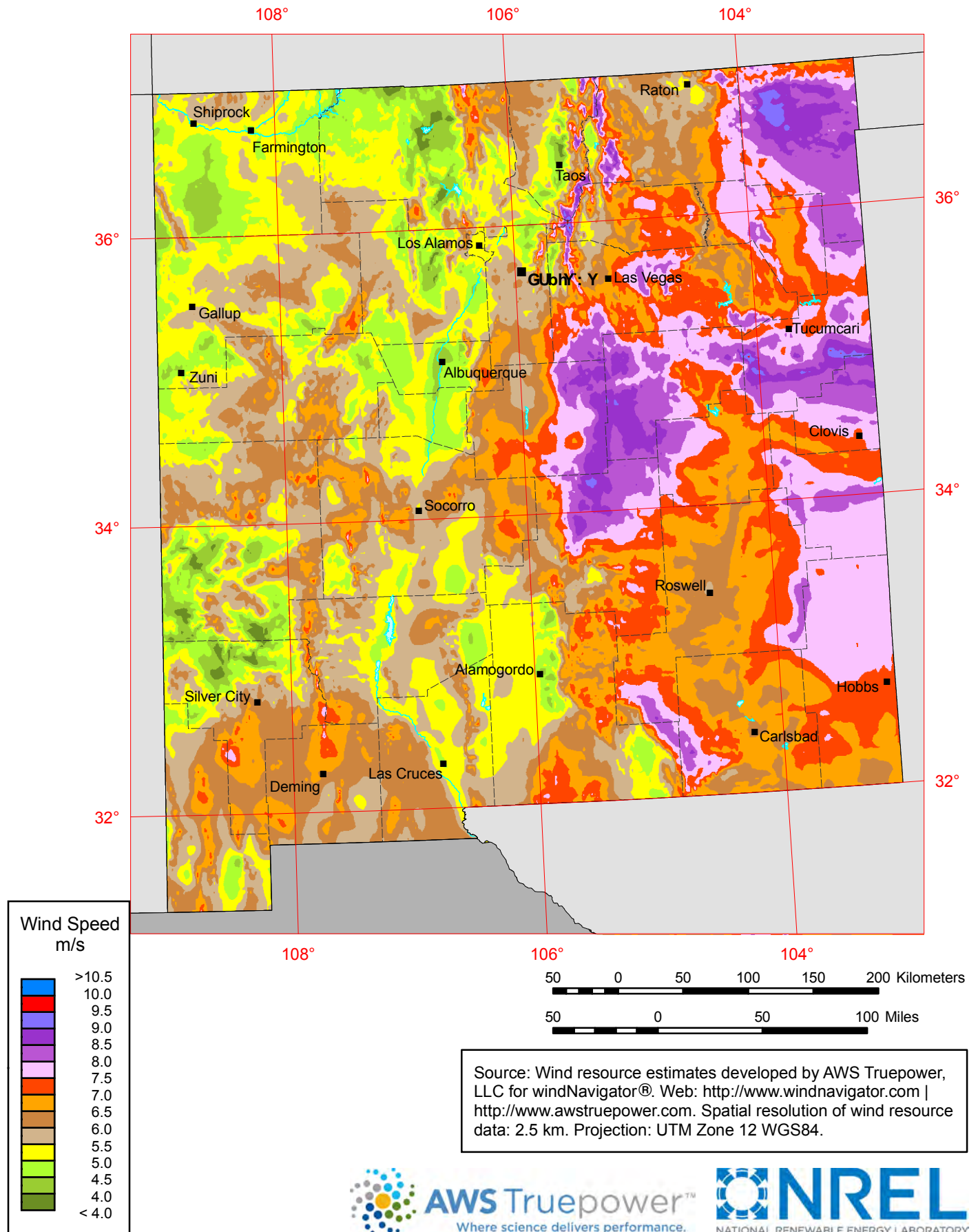
---

Case No. 18-\_\_\_\_\_

**EXHIBIT CC-1**



# New Mexico - Annual Average Wind Speed at 80 m



**BEFORE THE NEW MEXICO PUBLIC REGULATION COMMISSION**

IN THE MATTER OF THE CORONA WIND )  
COMPANIES' JOINT APPLICATION FOR THE )  
LOCATION OF THE CORONA WIND PROJECTS )  
AND THE CORONA GEN-TIE SYSTEM IN )  
LINCOLN, TORRANCE AND GUADALUPE )  
COUNTIES PURSUANT TO THE PUBLIC UTILITY )  
ACT, NMSA 1978, §62-9-3 )

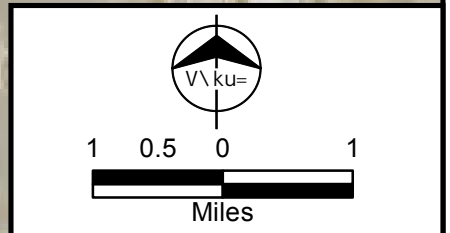
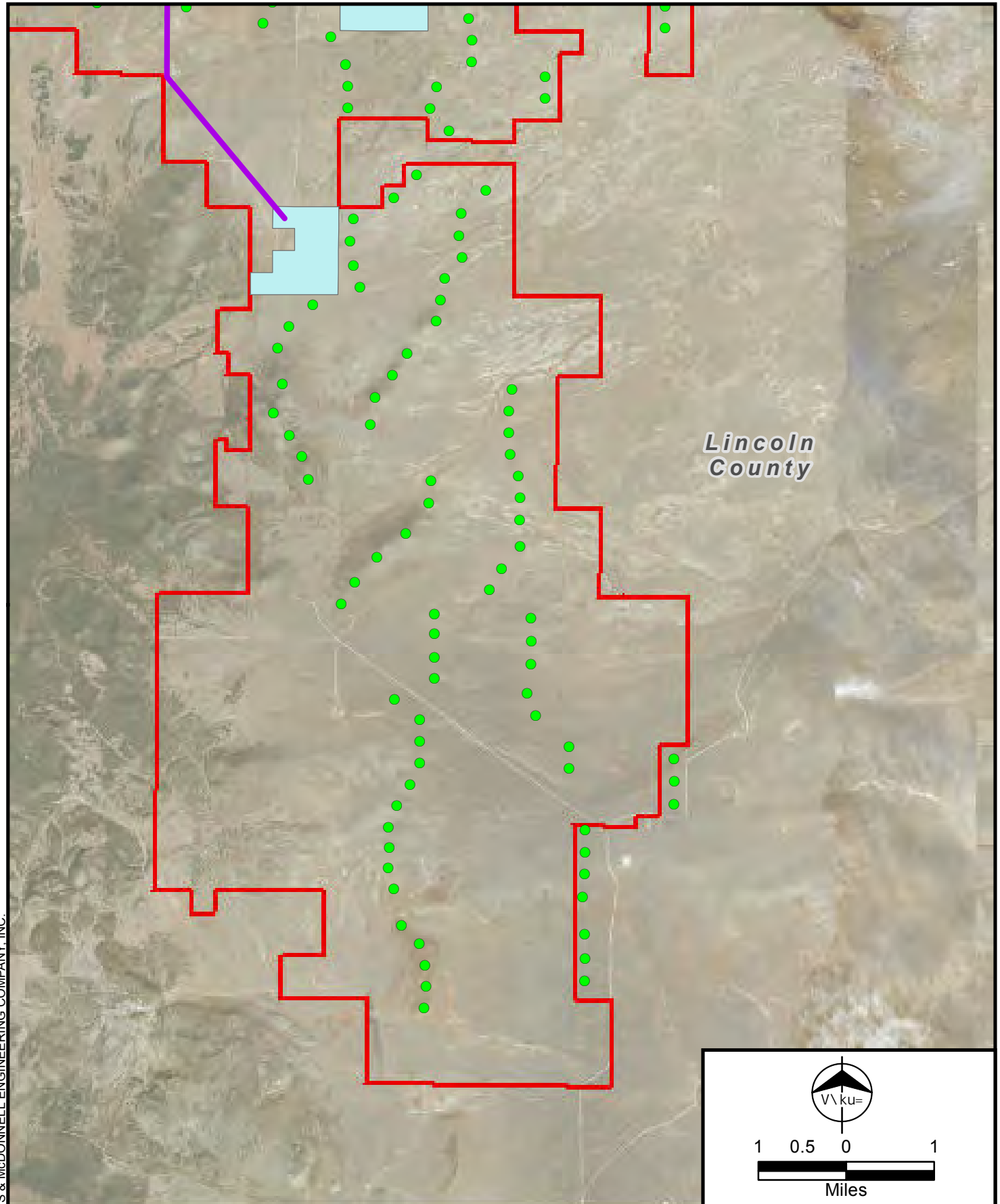
Case No. 18-\_\_\_\_\_

ANCHO WIND LLC, COWBOY MESA LLC, DURAN )  
MESA LLC, RED CLOUD WIND LLC, TECOLOTE )  
WIND LLC, VIENTO LOCO LLC, )

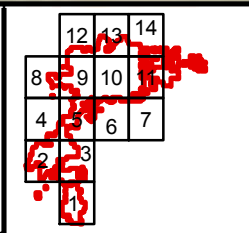
**JOINT APPLICANTS.** )

# EXHIBIT CC-2

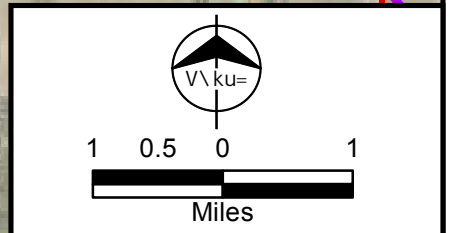
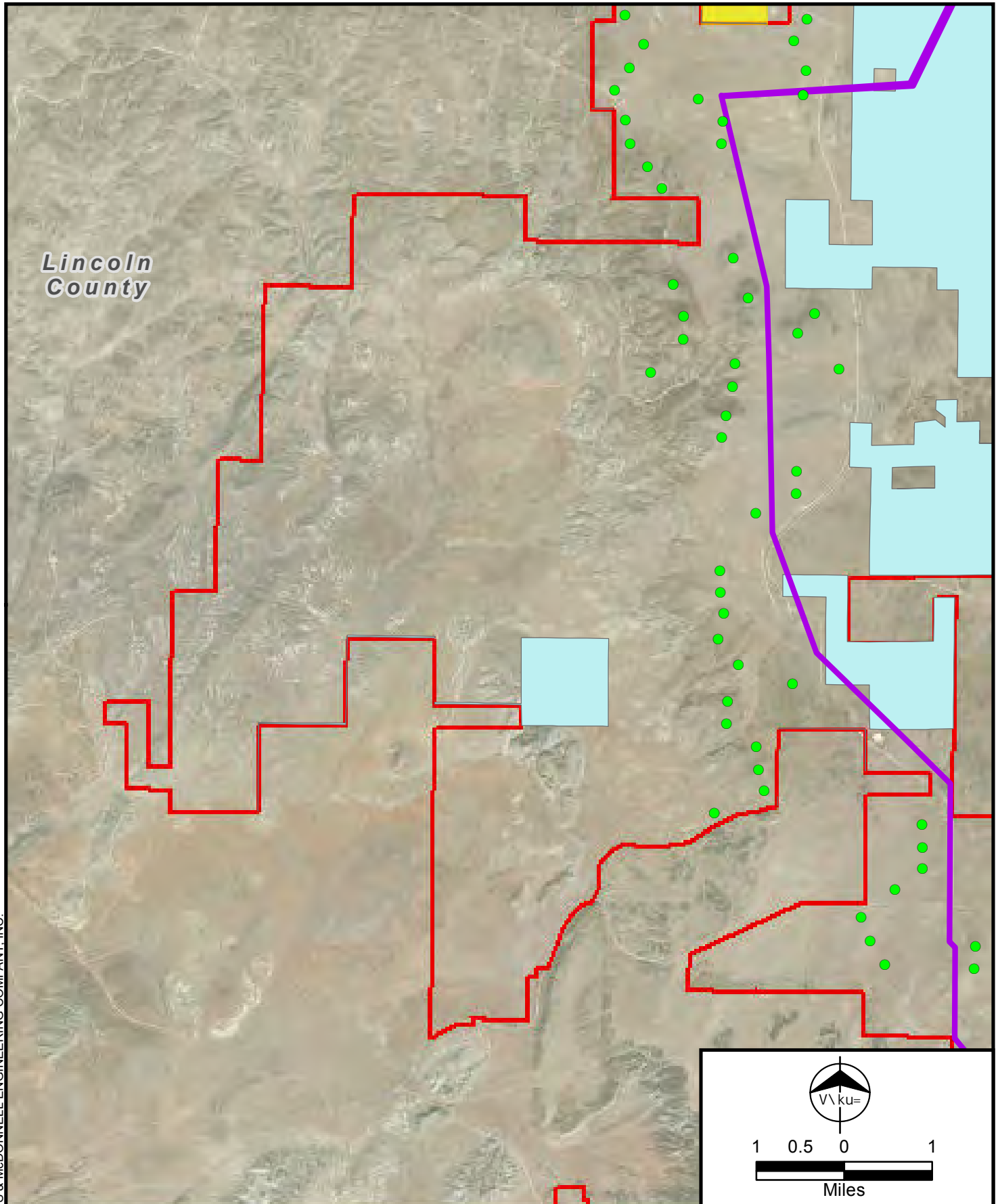




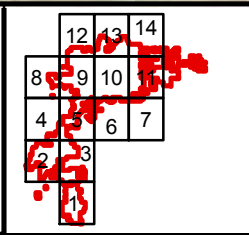
- Points
- Transmission Line
- State Lands Under Patterns Control
- Wind Project Area
- County Boundary



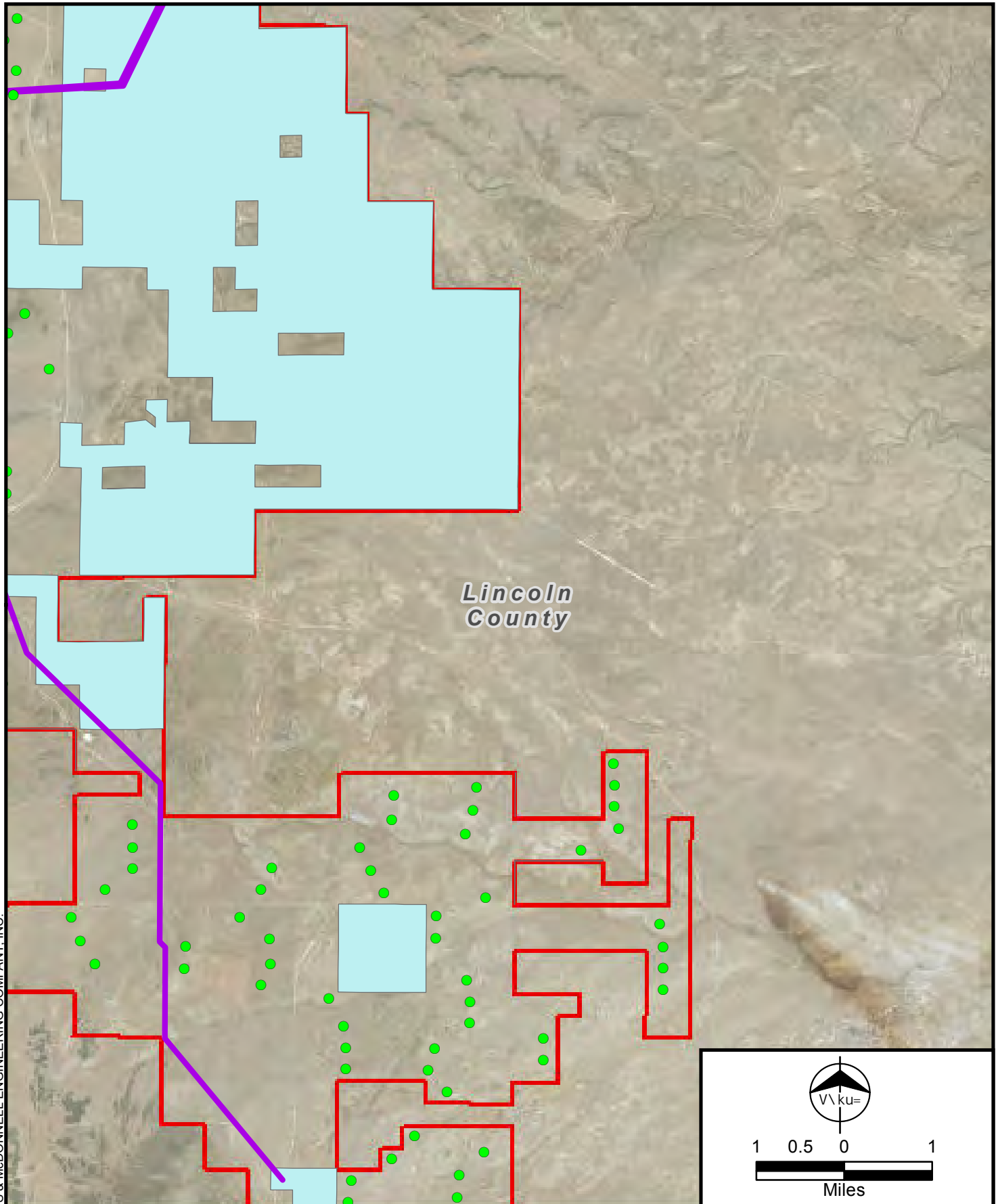
Prelinary Turbine Map for  
Representational Purposes Only  
Pattern Development  
Corona Wind Projects  
Guadalupe, Lincoln,  
& Torrance Counties, NM  
Page 1 of 14



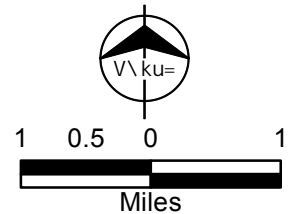
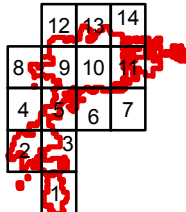
- Points
- Transmission Line
- State Lands Under Patterns Control
- Wind Project
- Project State Lands
- County Boundary



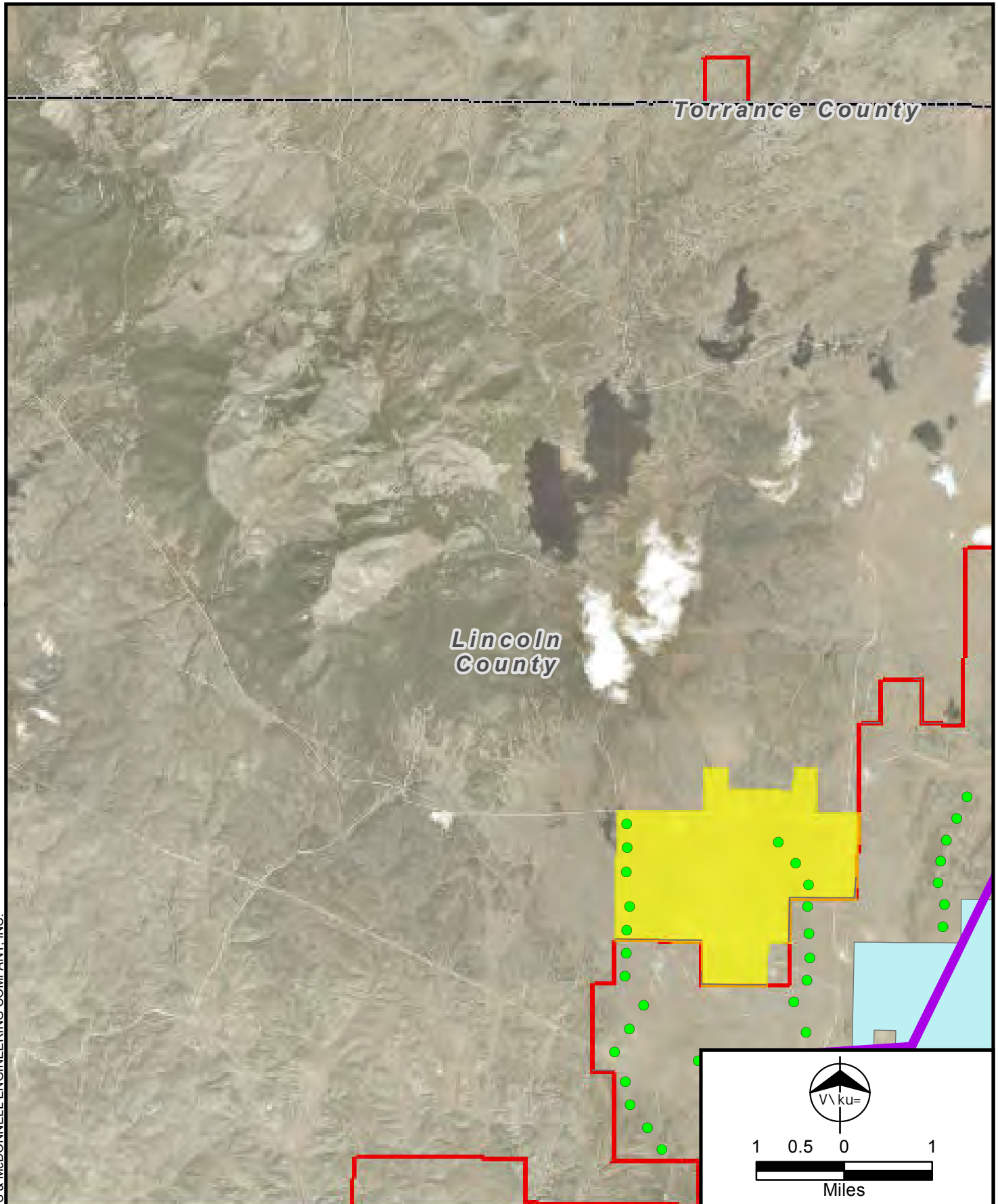
Preliminary Turbine Map for  
Representational Purposes Only  
Pattern Development  
Corona Wind Projects  
Guadalupe, Lincoln,  
& Torrance Counties, NM  
Page 2 of 14



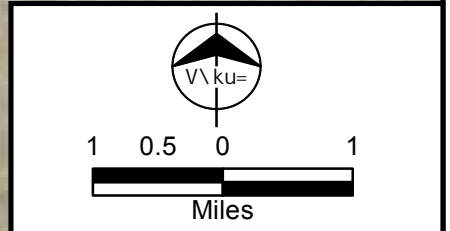
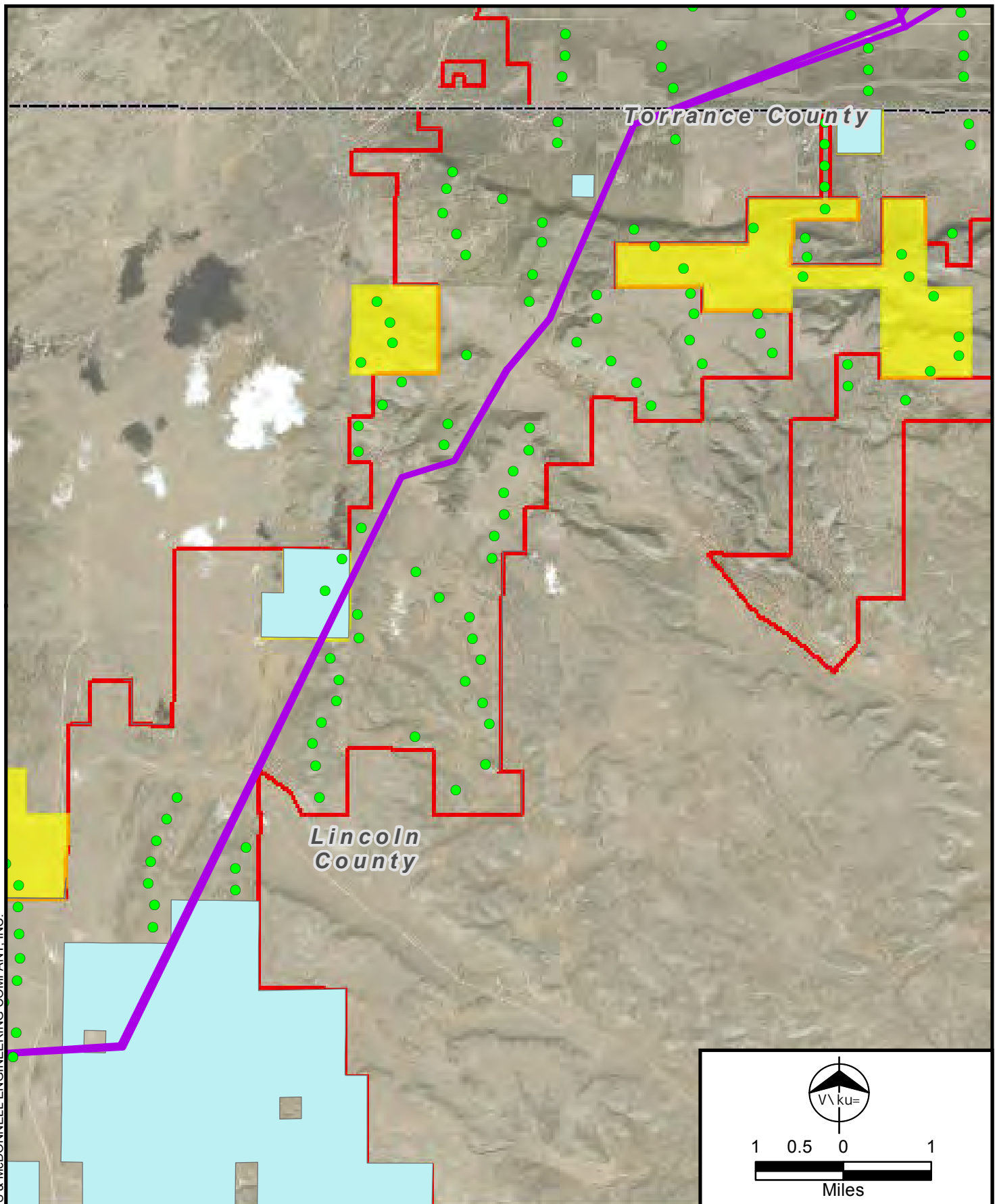
- Points
- Transmission Line
- State Lands Under Patterns Control
- Wind Project Area
- County Boundary



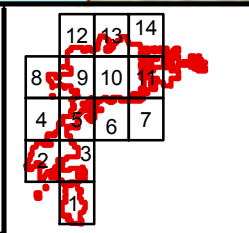
Prelinary Turbine Map for  
Representational Purposes Only  
Pattern Development  
Corona Wind Projects  
Guadalupe, Lincoln,  
& Torrance Counties, NM  
Page 3 of 14



<ul style="list-style-type: none"> <li>Points</li> <li>Transmission Line</li> <li>State Lands Under Patterns Control</li> <li>Wind Project</li> <li>Project State Lands</li> <li>County Boundary</li> </ul>			<p>Prelinary Turbine Map for Representational Purposes Only Pattern Development Corona Wind Projects Guadalupe, Lincoln, &amp; Torrance Counties, NM Page 4 of 14</p>
---	--	--	---

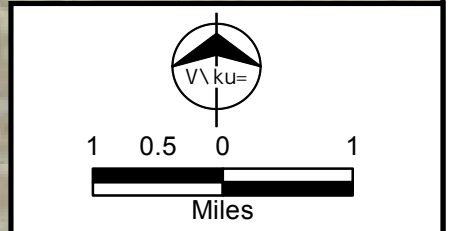
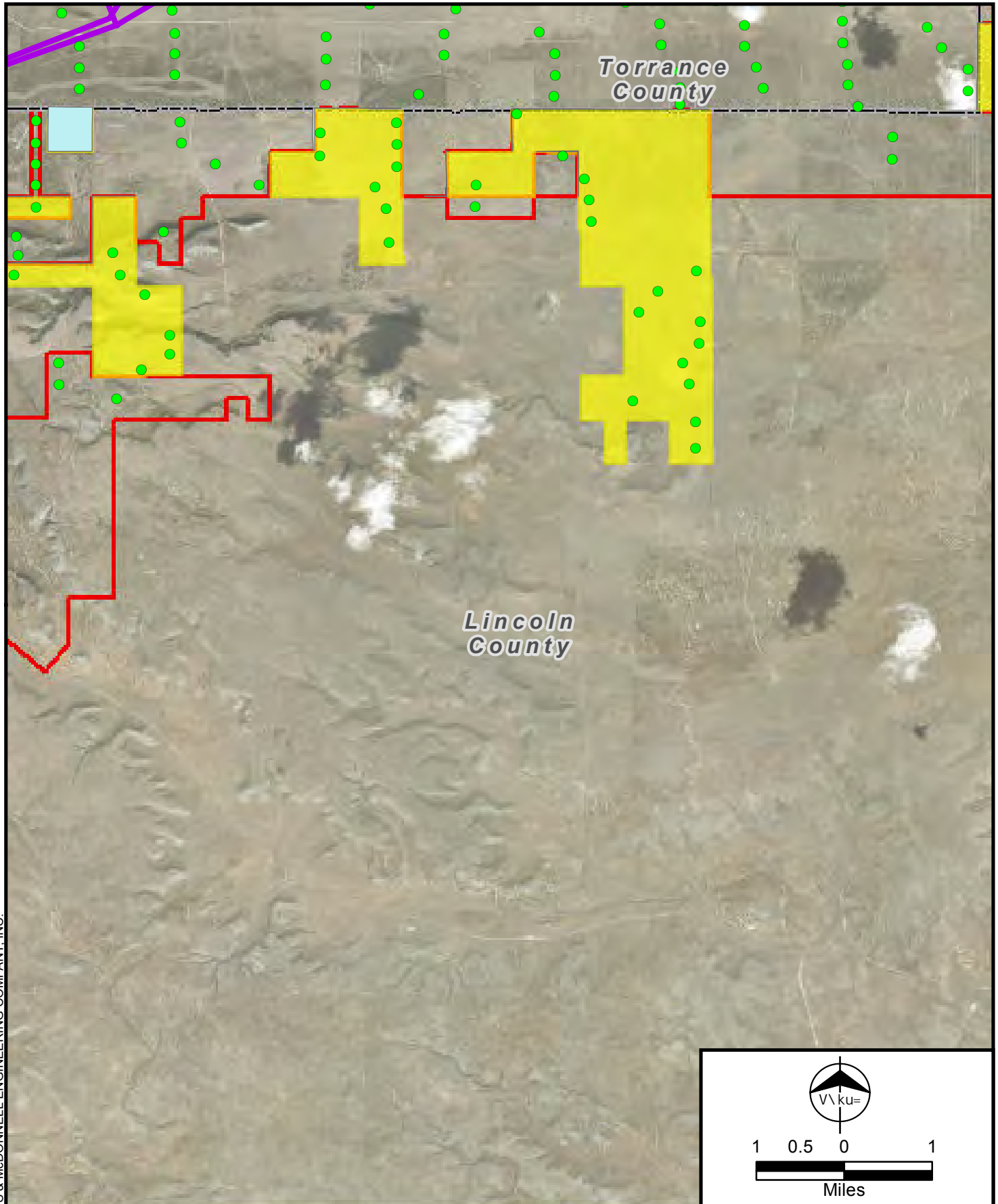


- Points
- Transmission Line
- State Lands Under Patterns Control
- Wind Project Area
- Project State Lands
- County Boundary

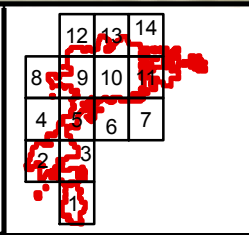


Preliminary Turbine Map for  
Representational Purposes Only  
Pattern Development  
Corona Wind Projects  
Guadalupe, Lincoln,  
& Torrance Counties, NM  
Page 5 of 14

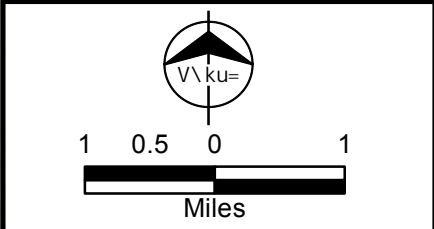
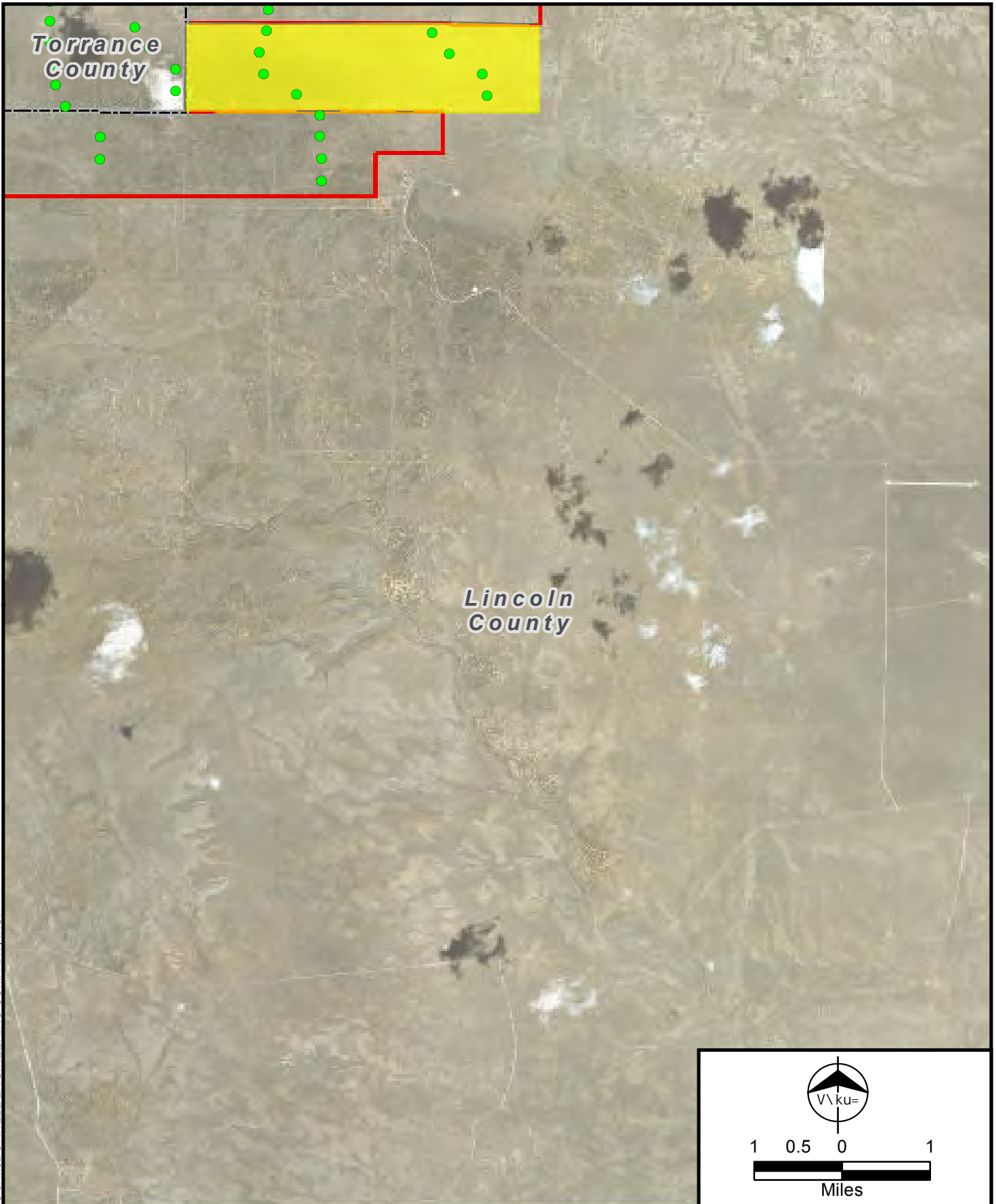




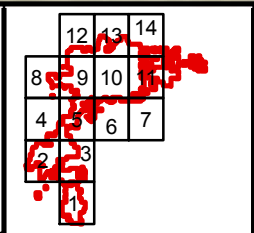
- Points
- Transmission Line
- State Lands Under Patterns Control
- Wind Project Area
- Project State Lands
- County Boundary



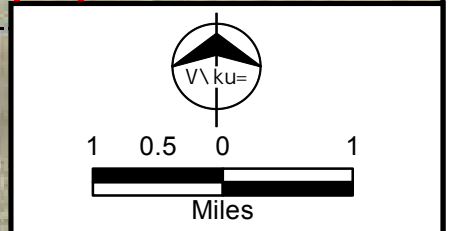
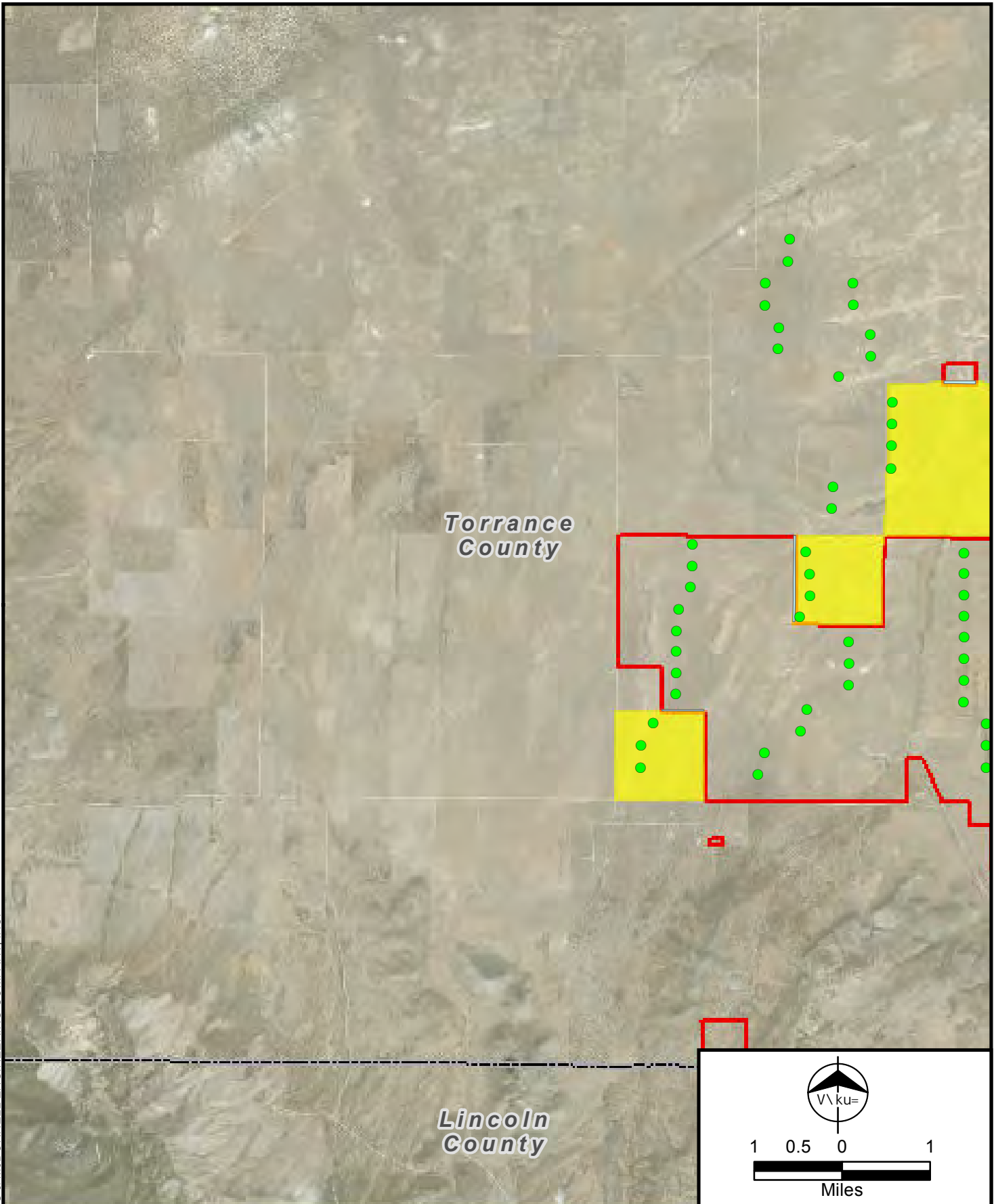
Prelinary Turbine Map for  
Representational Purposes Only  
Pattern Development  
Corona Wind Projects  
Guadalupe, Lincoln,  
& Torrance Counties, NM  
Page 6 of 14



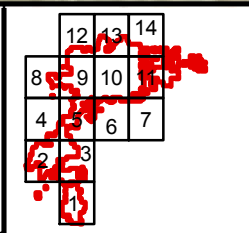
- Points
- State Lands Under Patterns Control
- Wind Project Area
- Project State Lands
- County Boundary



Prelinary Turbine Map for  
Representational Purposes Only  
Pattern Development  
Corona Wind Projects  
Guadalupe, Lincoln,  
& Torrance Counties, NM  
Page 7 of 14

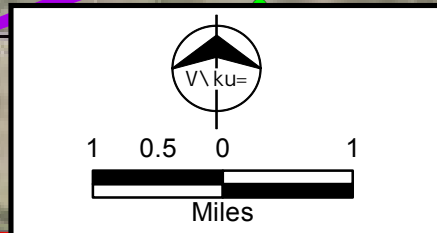
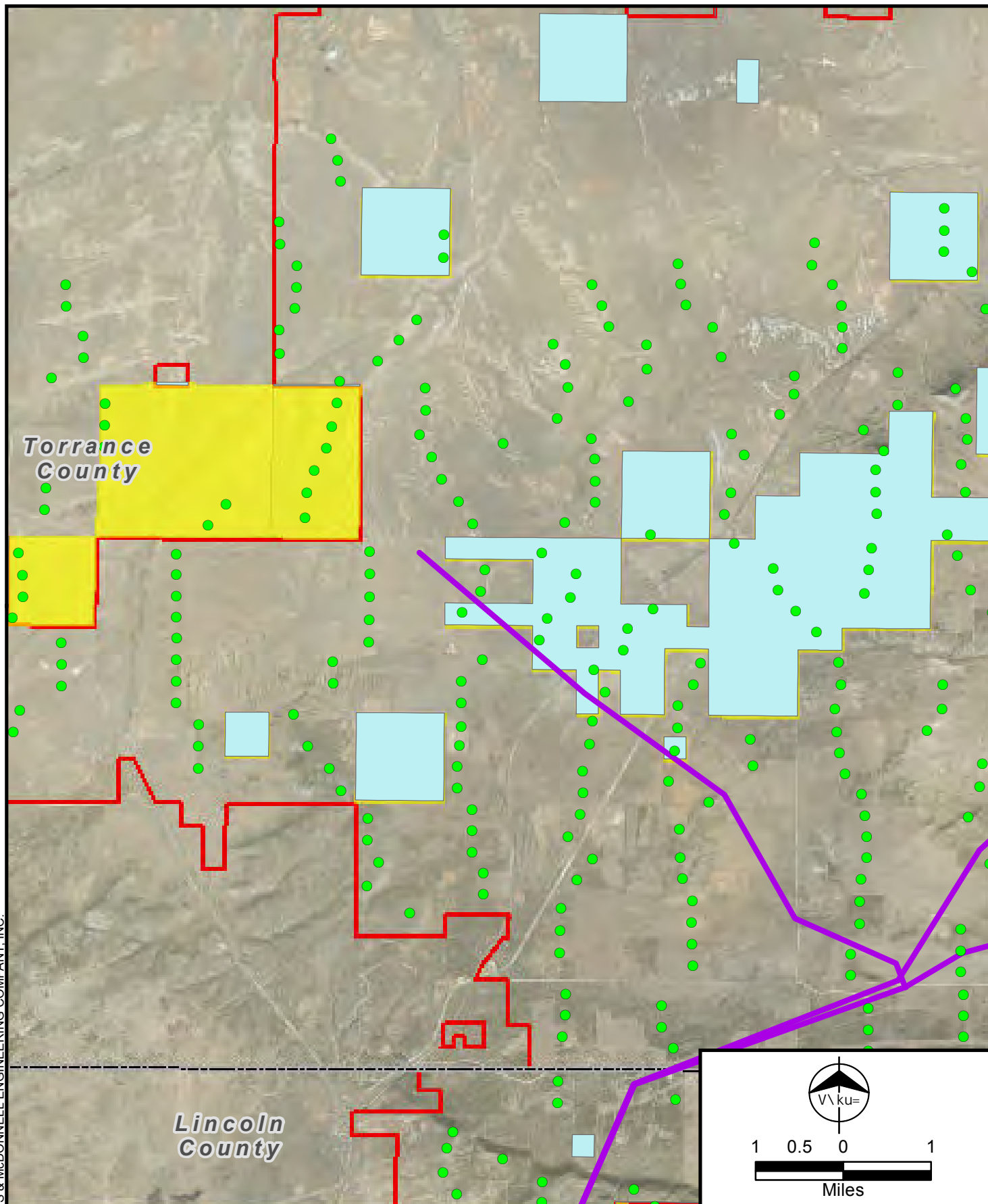


- Points
- State Lands Under Patterns Control
- Wind Project
- Project State Lands
- County Boundary

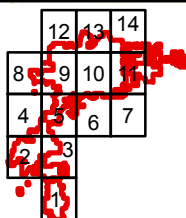


Preliminary Turbine Map for  
Representational Purposes Only  
Pattern Development  
Corona Wind Projects  
Guadalupe, Lincoln,  
& Torrance Counties, NM  
Page 8 of 14

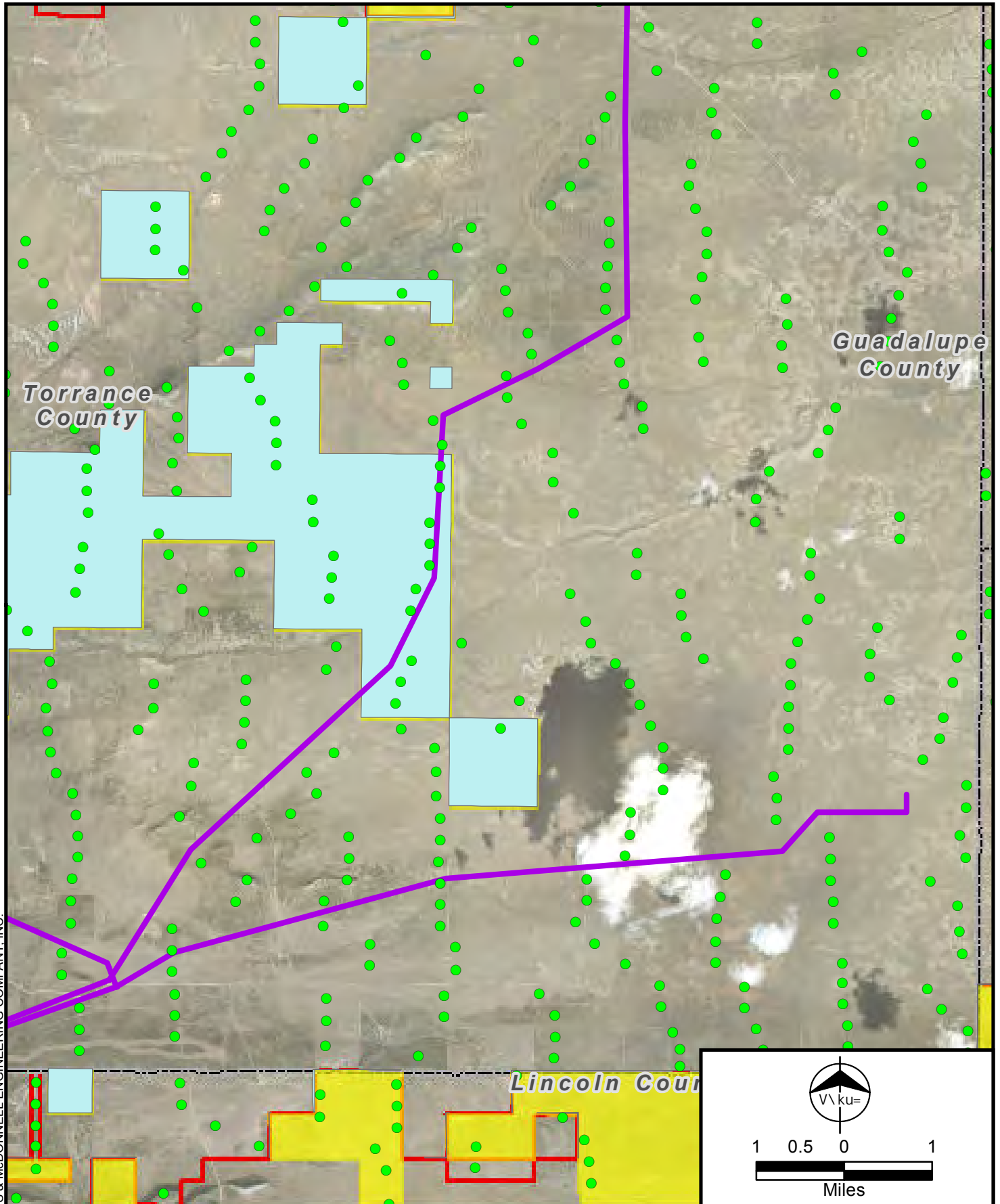




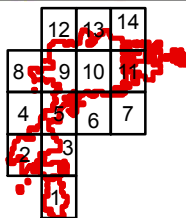
- Points
- Transmission Line
- State Lands Under Patterns Control
- Wind Project
- Project State Lands
- County Boundary



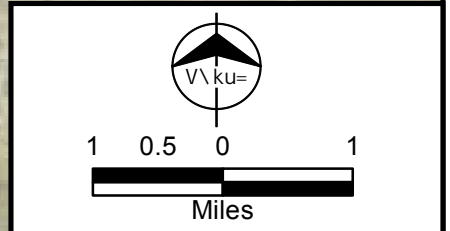
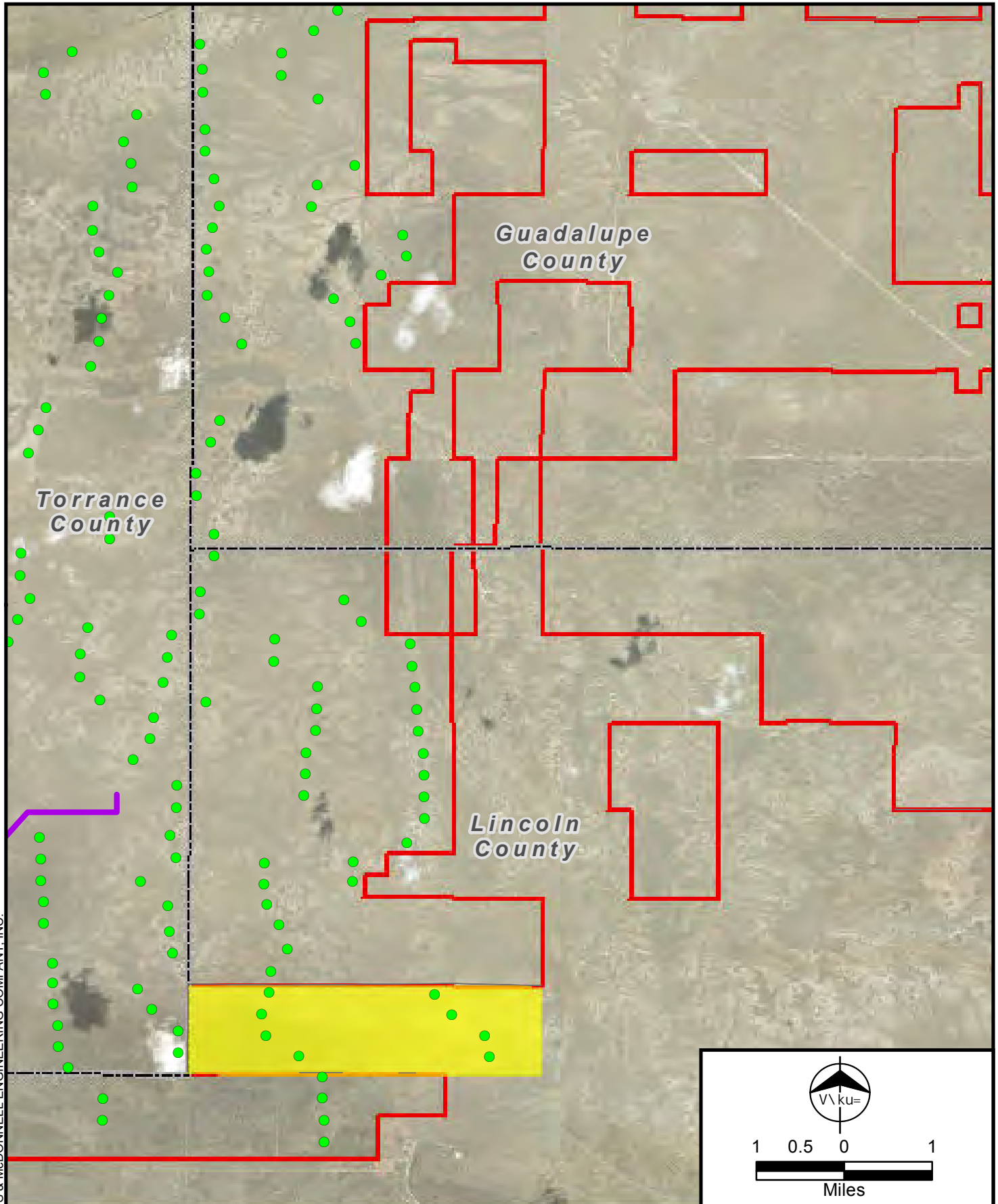
Prelinary Turbine Map for  
Representational Purposes Only  
Pattern Development  
Corona Wind Projects  
Guadalupe, Lincoln,  
& Torrance Counties, NM  
Page 9 of 14



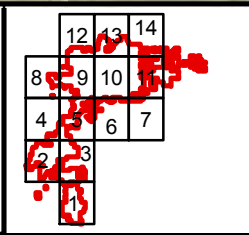
- Points
- Transmission Line
- State Lands Under Patterns Control
- Wind Project Area
- Project State Lands
- County Boundary



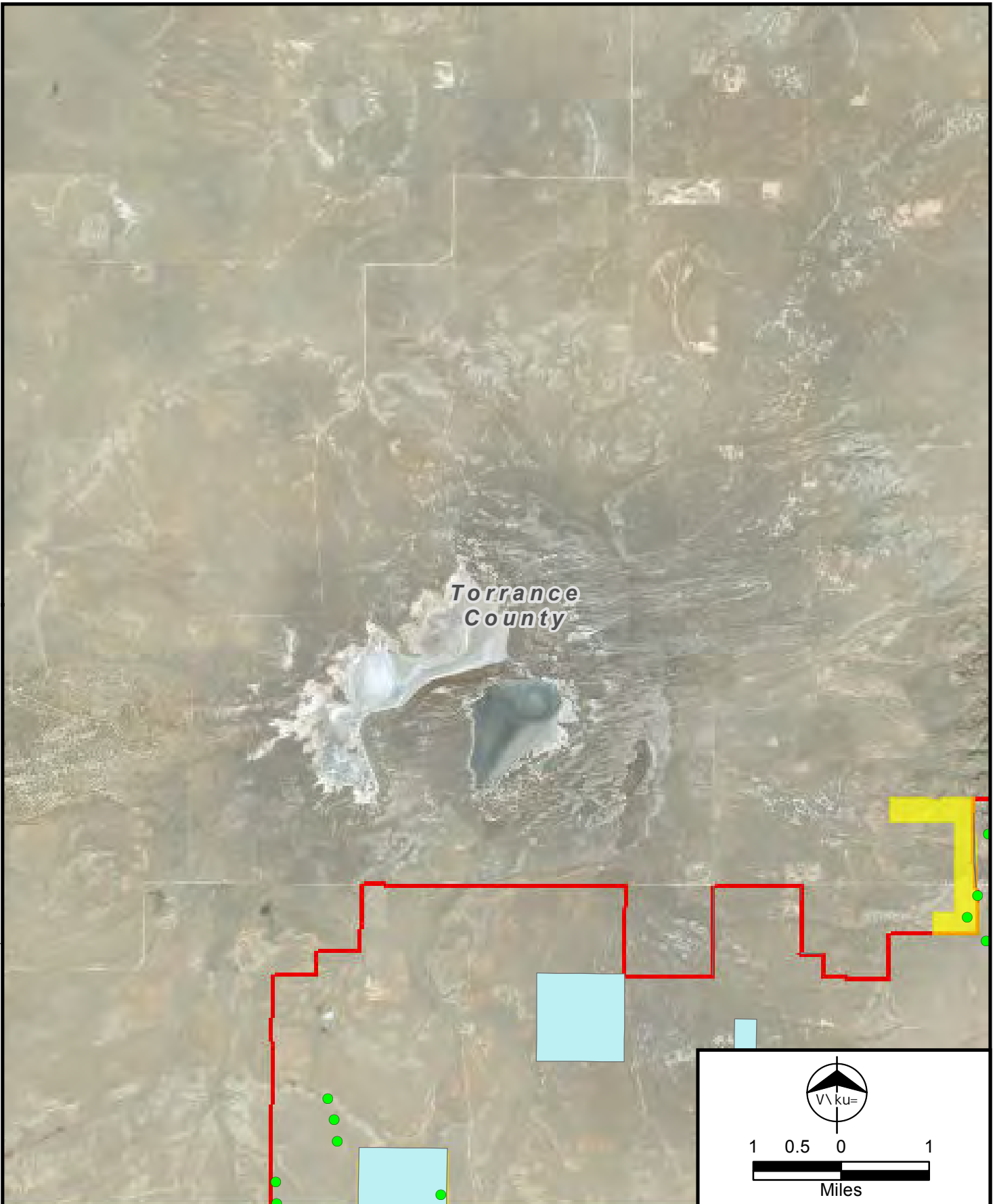
Prelinary Turbine Map for  
Representational Purposes Only  
Pattern Development  
Corona Wind Projects  
Guadalupe, Lincoln,  
& Torrance Counties, NM  
Page 10 of 14



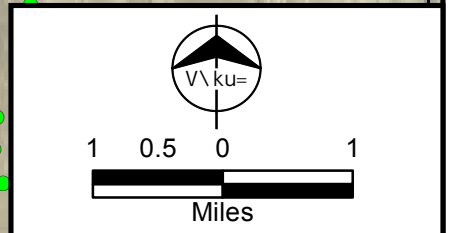
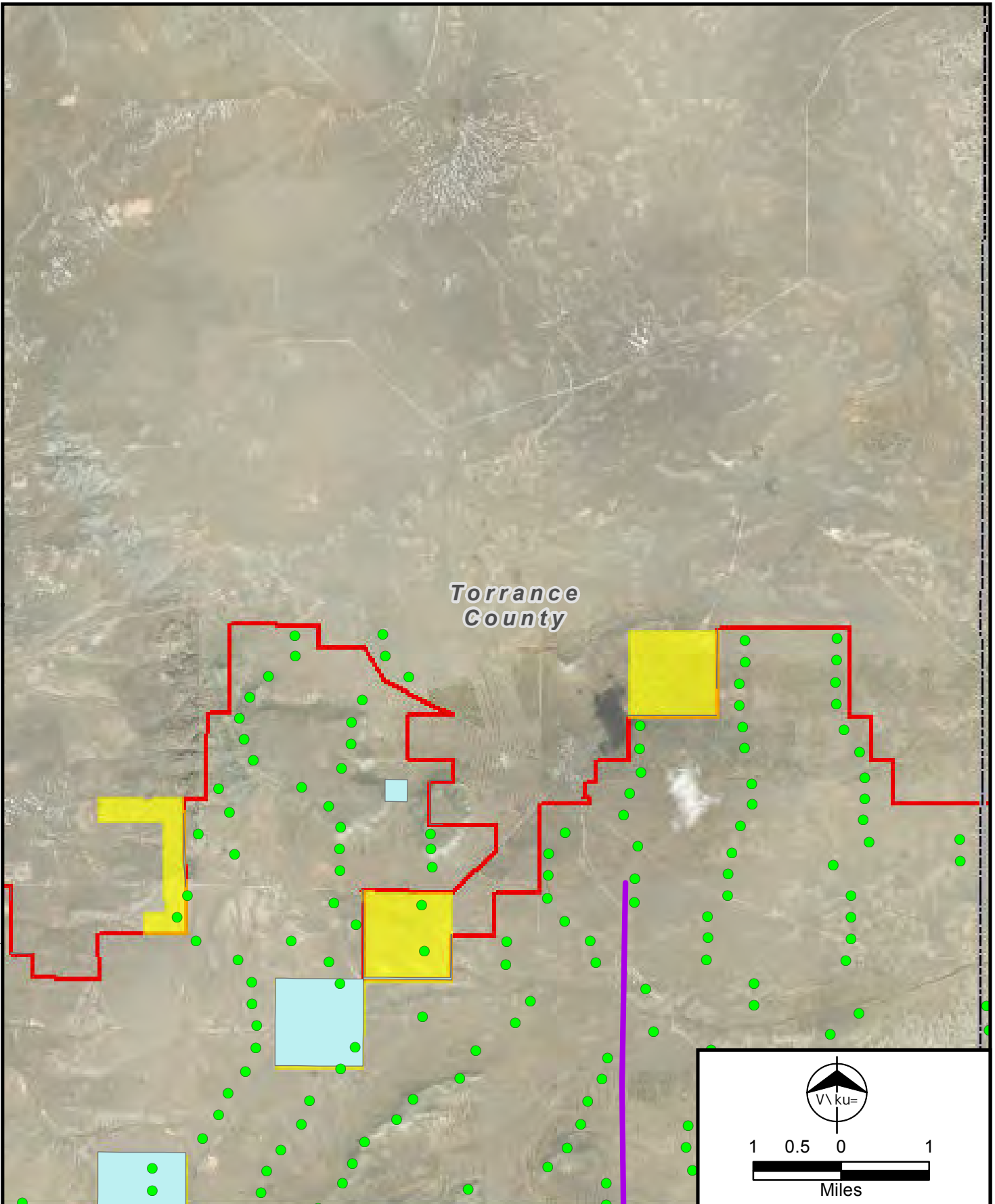
- Points
- Transmission Line
- State Lands Under Patterns Control
- Wind Project Area
- Project State Lands
- County Boundary



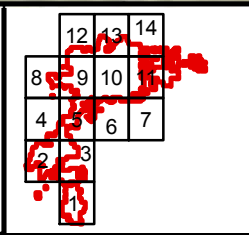
Prelinary Turbine Map for  
Representational Purposes Only  
Pattern Development  
Corona Wind Projects  
Guadalupe, Lincoln,  
& Torrance Counties, NM  
Page 11 of 14



<ul style="list-style-type: none"> <li>Points</li> <li>State Lands Under Patterns Control</li> <li>Wind Project Area</li> <li>Project State Lands</li> <li>County Boundary</li> </ul>			<p>Prelinary Turbine Map for Representational Purposes Only Pattern Development Corona Wind Projects Guadalupe, Lincoln, &amp; Torrance Counties, NM Page 12 of 14</p>
---	--	--	--

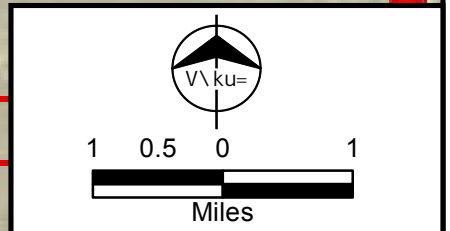
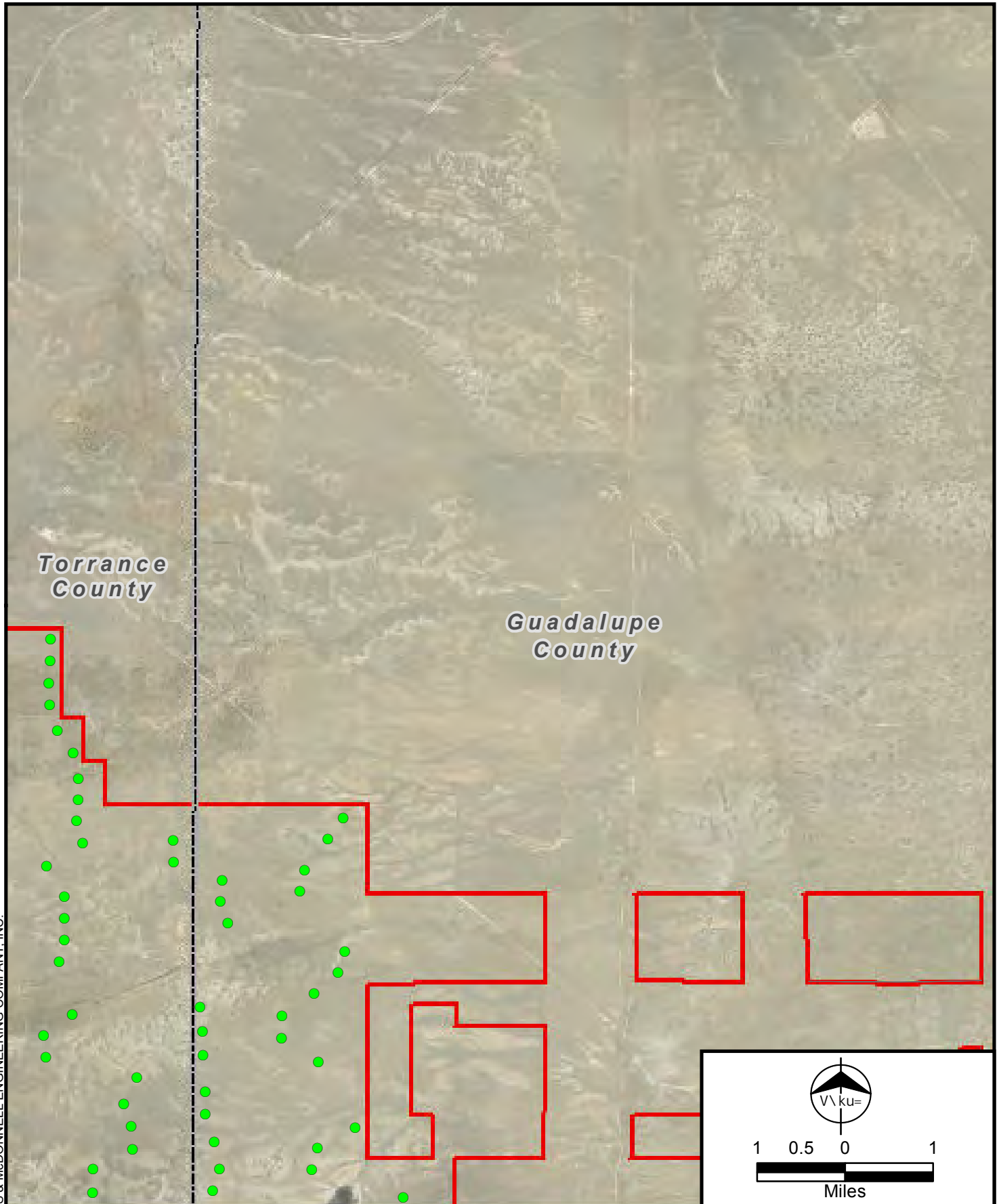


- Points
- Transmission Line
- State Lands Under Patterns Control
- Wind Project
- Project State Lands
- County Boundary

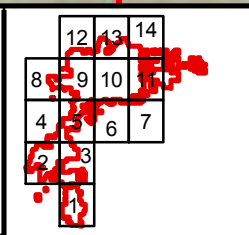


Preliminary Turbine Map for  
Representational Purposes Only  
Pattern Development  
Corona Wind Projects  
Guadalupe, Lincoln,  
& Torrance Counties, NM  
Page 13 of 14





- Points
- State Lands Under Patterns Control
- Wind Project Area
- County Boundary



Preliminary Turbine Map for  
Representational Purposes Only  
Pattern Development  
Corona Wind Projects  
Guadalupe, Lincoln,  
& Torrance Counties, NM  
Page 14 of 14

**BEFORE THE NEW MEXICO PUBLIC REGULATION COMMISSION**

IN THE MATTER OF THE CORONA WIND )  
COMPANIES' JOINT APPLICATION FOR THE )  
LOCATION OF THE CORONA WIND PROJECTS )  
AND THE CORONA GEN-TIE SYSTEM IN )  
LINCOLN, TORRANCE AND GUADALUPE )  
COUNTIES PURSUANT TO THE PUBLIC UTILITY )  
ACT, NMSA 1978, §62-9-3 )

Case No. 18-\_\_\_\_\_

ANCHO WIND LLC, COWBOY MESA LLC, DURAN )  
MESA LLC, RED CLOUD WIND LLC, TECOLOTE )  
WIND LLC, VIENTO LOCO LLC, )  
)  
)  
)

JOINT APPLICANTS. )

---

**EXHIBIT CC-3**

Allysanne M Huey

PO Box 85

Corona, NM 88318

To Whom It May Concern:

It is with great enthusiasm that I give my full support to the Corona Wind Energy Project.

I believe the project will bear many benefits to not only my business and family, but also to the community, the school and many other businesses and ranches in the Corona area.

Growing up in a rural community has definitely been a blessing, but is not without its difficulties. Having the ability to partake in this wind lease will provide my ranching family, as well as other surrounding ranchers the opportunity to continue living a life we cherish deeply, as well as assisting in the contribution of a healthier, renewable and more reliable energy to a more sizable population.

The project will create a great number of stable jobs to not only members of the community but also the remaining citizens of Lincoln County. The school will benefit enormously from the project which will provide better funding, resulting in more opportunities for the children in the community. The advantages of the project has the capability to generate a vast number of possibilities for the entire state of New Mexico as well as all across the globe.

With complete sincerity and commitment I promote and encourage the Public Regulation Commission to consider the benefits this project will provide to many families, including my own, the community of Corona, the County of Lincoln and the State of New Mexico.

I propose standing in support of my family, the people of Corona and the great state of New Mexico to ensure the Corona Wind Energy Project is a tremendous triumph!

Sincerely,



2-11-2018

Allysanne Huey



Brandon Huey  
PO Box 85  
Corona, NM 88318

To Whom It May Concern:

I am very excited to give my full support to the Corona Wind Energy Project.

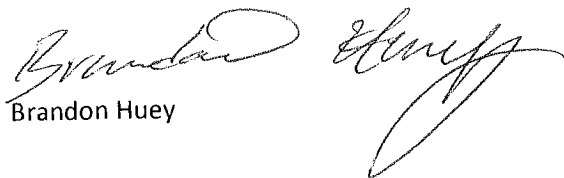
This project offers great benefits to not only my business and family, but also to the community, the school and many other businesses and ranches in the Corona area.

Growing up in a rural community has been rewarding but is not without its financial difficulties. This wind lease will provide my ranching family, as well as other surrounding ranchers the opportunity to continue living a life we cherish.

The project will create stable jobs to not only members of the community but also the citizens of Lincoln County. The school will benefit enormously from the project which will provide better funding, resulting in more opportunities for the children in the community. The advantages of the project has the capability to generate a vast number of possibilities for the entire state of New Mexico as well as all across the globe.

I support the Corona Wind Project and Pattern Energy in their endeavor to make this a success for our town and community.

Sincerely,

  
Brandon Huey

2/12/2018

# RAD ENTERPRISES, LLC

---

1403 CR 430

Stephenville, TX 76401

254-592-4528

February 7, 2018

New Mexico Public Regulation Commission  
Santa Fe, New Mexico

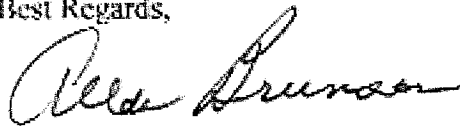
Re: Viento Loco Wind Farm Project

To Whom It may concern:

My name is Allan Brunson and I represent RAD Enterprises, LLC. We own a ranch in southern Torrance County which is a part of the Corona North Land Owners group and a part of the area included in the proposed Viento Loco Wind Farm Project. My Dad bought our ranch in 1959 and lived on it for 50 years. He struggled to make a living on his ranch but was able to raise his family there through hard work and a frugal lifestyle. The wind farm is an opportunity to let his hard work pay off for our family, as we believe we will profit from the development along with our entire community.

We are very excited about the Project and are very much in favor of the development. The Project will produce a much needed economic boost to our community and county, and will bring growth to our area in many ways. The tax revenues from this project will certainly help our county and other taxing entities, bring families into the community which will help local retailers, the schools, and stimulate growth for Torrance County. Our wind is some of the best in the nation, and is becoming one of the most popular renewable energy resources to produce electricity. The technology is here and improving every day so there is no doubt this Project will be successful. We give it a hearty "thumbs up" and welcome Pattern Energy and other developers to see this Project to fruition! Thank you for your consideration and support of Viento Loco Wind Farm Project.

Best Regards,



Allan Brunson—RAD Enterprises, LLC

February 14, 2018

New Mexico Public Regulation Commission

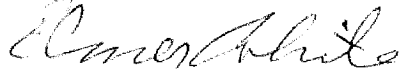
Commissioners,

My name is Elmer E. White Jr. I was born in Curry County in 1936. I live on the same quarter section of land my father, Elmer E. White Sr. homesteaded in 1907.

The reason for this letter is to express support for Pattern Energy. Although I do not have land in the Broadview Wind Project, I do have land in the Grady Wind Project. My experience with Pattern has been very positive. The lease payments have been made in full and in a timely manner. The interaction between Pattern, its employees, and subcontractors with the community has been exemplary. The Village of Grady as well as the Grady Municipal School have benefitted significantly. New Mexico has a great, unexploited resource, abundant wind. Companies like Pattern Energy are a means to develop this resource. Such development will help our state and our nation.

I hope you, as Commissioners will use your positions on the PRC to welcome and facilitate involvement of companies like Pattern Energy. Thank you for your attention to my plea.

Respectfully submitted,

A handwritten signature in cursive script, appearing to read "Elmer White".

Elmer White

Emma Budagher Hindi  
7805 Academy Trail NE  
Albuquerque, NM 87109

February 11, 2018

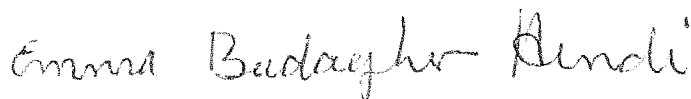
To Whom It May Concern:

I would be very happy to see a wind farm in Duran and Corona. It would mean a great deal to the people in the area to finally have some resources to make improvements in our small towns.

As a mother and grandmother, I always worry about the future for my family. A wind farm would provide a stable and bright future not only for my family, but for so many. I grew up in a time when gas and electricity were cheap. You could raise a family on one income, send your kids to college and still have something for old age. But things have changed so much. We have to find new ways of doing things. A wind farm that is good for the environment and provides clean, alternative energy in the United States would be a wonderful thing.

Please approve the Corona Wind farm project.

Sincerely,

A handwritten signature in cursive script that reads "Emma Budagher Hindi". The ink is dark and the handwriting is fluid.

Emma Budagher Hindi  
Rancher age 86

Sue Hughes  
P.O. Box 311  
Corona, NM 88318  
505-849-2222

February 14, 2018

Public Regulation Commission  
P.O. Box 1269  
Santa Fe, NM 87504

Commissioners:

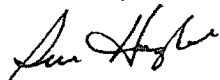
As a shareholder in Sharp Ranch Inc., I want to show my support for the Corona Wind Project being developed by Pattern Development.

My family homesteaded the Sharp Ranch, Inc. in the late 1920's. Ranching is a hard business and being the 2<sup>nd</sup> generation I would like to pass this on to the 3<sup>rd</sup> generation. Having the Corona Wind Project will help the 3<sup>rd</sup> generation be successful.

I feel that the Corona Wind Project will help the town of Corona, NM. The little town is dying and the Wind Project will help Corona prosper. It will help economically and help the school system there.

I want to ask for you to support this project, because it will be beneficial to my family and the community.

Sincerely,



Sue Hughes



Lisa Encinias  
63 Sedillo Rd.  
Los Lunas, NM 87031  
505-610-7599

February 14, 2018  
Public Regulation Commission  
P.O. Box 1269tho  
Santa Fe, NM 87504

Commissioners:

My grandfather homesteaded the Sharp Ranch. I am writing this to express my support for the Corona Wind Project being developed by Pattern Development.

I am the 3<sup>rd</sup> generation and there are 13 grandchildren in this generation. I support this project because only a few of my generation have anything to do with the actual work and running of this ranch.

I know that my cousins will want to sell their part of the ranch, and the few that want to keep it will not be able to afford to buy them out. If the wind project is developed then those cousins will not want to sell their part. This is so important to me. I have grown up on this ranch. It means the world to me to keep it in our family.

My mom and dad live in Corona, and the past few years the economy has been horrible. The only grocery store had to be shut down. There is only one café, gas station and a K-12 school. The Corona Wind Project will have a huge impact on the community and the school.

Please consider supporting this wind project which will help all the ranches in the community and the town.

Thank You.

A handwritten signature in black ink that reads "Lisa Encinias". The signature is written in a cursive style with a large, looped initial "L".

Lisa Encinias

Gallina Creek Ranch  
Randal and Joyce Biebell  
P.O. Box 403

Corona, New Mexico 88318

February 10, 2018

Public Regulation Commission

RE: Pattern - Corona Wind Project

To Whom It May Concern:

We have been asked to write this letter as a  
lessor to Pattern Wind Development concerning the  
Corona wind project. We have worked with Lonnie Hunt  
and Leon Porter for the past year on this project.

This project will allow our family who are fourth  
generation ranchers to continue the way of life  
we have loved for many years.

It will also benefit our small rural community by  
bringing in much needed money for our schools,  
community and county in central New Mexico.

We would greatly appreciate your support on the  
Pattern - Corona Wind Project. We thank you very much  
for your time and consideration regarding this wind project.

Sincerely,  
Randal E. Biebell

February 26, 2018  
4011 CR C  
Broadview, NM 88112

New Mexico Public Regulation Commission  
P.O. Box 1269  
Santa Fe, New Mexico 87504-1269

Dear Commission Members,

This letter is in regard to Pattern Energy's development of the Broadview Wind Farm in Curry County and the future building of the Grady Wind and Corona Wind projects.

We are land owners in the Broadview Energy Wind Farm in Curry County. The Broadview project has already generated thousands of dollars to our schools and communities, in addition to payments to land owners from Pattern Energy. We all benefit from this much needed revenue to our schools, villages, and county.

This development of a clean and renewable natural resource will result in increased revenue for this community and this county, more jobs, and is a very positive addition to rural communities and New Mexico.

We thank the public regulation commission for the work you do. We strongly endorse, and request your continued support for the Grady and Corona wind generation facilities.

Sincerely,

A handwritten signature in black ink that reads "Storm & Darlene Gerhart". The script is cursive and fluid.

Storm and Darlene Gerhart

**Hall-Gnatkowski, Inc.  
724 Jacks Peak Rd  
Carrizozo, NM 88301  
February 18, 2018**

**Public Regulation Commission  
PO Box 1269  
Santa Fe, NM 87504**

**To Whom It May Concern:**

**This letter is in support of the efforts of Pattern Energy to develop a wind energy generation project in Torrance and Lincoln counties in south-central New Mexico. When complete, the project will provide a source of clean, renewable electricity to supplement the nation's increasing energy needs. Additionally, the availability of jobs that will come during the construction phase and after the project is established will provide a tremendous economic boost to this area. More and better opportunities for employment translate into a more vibrant economy for the small towns in the area that have historically been getting smaller as people moved away to be able to make a living. A project like this will encourage them to stay and encourage the development of businesses to meet the needs of the people associated with the project.**

**Establishment of the project will mean additional revenue and more students in our local school systems. Enrollment in our schools has followed the trend of decreasing population in the area. It is certain that approval and construction of the project will revitalize our area school systems.**

**Lastly, revenue generated to landowners associated with the project will provide much needed financial stability. This is traditionally a livestock raising area. As such, we are subject to influences beyond our control, the main one being the annual timely precipitation required to grow adequate forage for the livestock. Many of the young people have left the ranches in pursuit of jobs that provide a more stable means of making a living. If some of the ranches are able to benefit economically it will encourage these young folks to stay here and enjoy the way of life that we love. Installation of the project will not affect the way in which the land is currently used.**

**Again, I respectfully request your support of the Pattern Energy wind energy generation project.**

**Sincerely**



**Pete Gnatkowski**

**From:** Michelle Huey  
**Sent:** Thursday, February 8, 2018 9:16 AM  
**To:** hueysmetal@outlook.com  
**Subject:** Corona Wind Project letter

February 8, 2018

Nicky D. Huey  
Penix Livestock  
PO Box 83  
Corona, NM 88318

To Whom it May Concern:

This letter is to show my vigorous support for the Corona Wind Project.

It is my sincere belief the project will be highly beneficial not just for my business and family, but the community as well.

Living in a rural community has been a blessing to our family, but has come with its share of challenges. The opportunity to participate in this wind lease will afford our third generation ranching family the ability to maintain a beloved way of life while helping provide a means of cleaner, renewable energy to a larger population.

The project also will create numerous longterm jobs to not just community members but the rest of Lincoln County. The benefits of the project has great potential to create a ripple effect that has vast benefits for the entire state of New Mexico.

I whole-heartedly endorse and recommend the Public Regulation Commission take into account what this project will mean to not only our family, but the community of Corona, the county of Lincoln and the state of New Mexico as well.

I recommend standing in support of our family, the people of Corona and this state to make the Corona Wind Project

a resounding success.

Sincerely yours,

Penix Livestock

Nicky Huey  
Michelle Huey



February 7, 2018

Loralee Hunt  
1101 North Morris  
Clovis, NM 88101

I have been asked my opinion regarding the Cowboy Mesa project located near Corona, NM. As a participating land owner in the project, I am in full agreement with the project.

My family homesteaded the ranch in 1904. It has been quite a struggle to keep the ranch operational ever since. It is my wish that the land remain in my family for the next 100 years. The income my family receives from the project will be of great help in this matter.

In addition to my personal gain, the village of Corona will greatly benefit. Almost all retail business had closed before the project was announced. The village was becoming a virtual ghost town. Frankly the only thing holding the village together was the public system. After the project became known, some of the businesses came back, and I believe others will follow. The restoration of the retail business in the village will generate the much needed revenue to operate the village and maintain and improve the schools.

I highly recommend approval of the Cowboy Mesa project.



James Noble Howell

P. O. Box 178  
Columbus, TX 78934

February 8, 2018

Dear New Mexico Public Service Department,

My Dad (Rached Hindi), Mom (Juanett) and I (the daughter Jana) are very supportive and so excited at the prospect of **Pattern Energy's Corona Wind Project**. We own the nine section "Emma Darlene Ranch" (my Grandmother's name) adjacent to and right east of Duran, NM.

We've know about all the good that this wind energy project will do for a lot ranchers, the people of Duran, NM, the educational system, the roads, the water, the country and the environment.

The many members of the Hindi family would thank you for supporting this project.

Sincerely,

*Jana Q E Hindi*

Jana Quay Emma Hindi

Jordan T Huey

HHH Cattle Co.

PO Box 85

Corona, NM 88318

To Whom It May Concern:

I give my full endorsement to the Corona Wind Project.

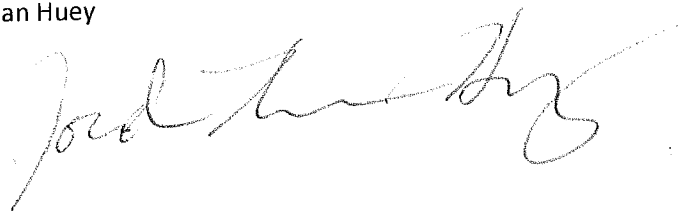
I believe the project will provide numerous opportunities to me as a business man and rancher. I also anticipate that the project will be very beneficial the Corona schools and community.

As a lifetime resident and rancher of Corona, I have experienced firsthand, the hardships that come with living in a rural community. The Wind Energy Project will provide an opportunity for me to continue living the ranch life that I have come to know and love. The project will also provide the opportunity for me to expand my business and secure a future for my family.

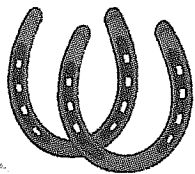
Allowing the Wind Energy Project to develop in Corona will fund the school ensuring that someday my kids, as well as other kids in the community will have possibilities that they may not have otherwise. The project will also provide numerous jobs to members of the community as well as other citizens throughout Lincoln County. The Wind project will allow local ranchers who struggle to maintain their ranch that has been in their family for generations will have the opportunity to provide for their families for generations to come.

Respectfully,

Jordan Huey

A handwritten signature in cursive script, appearing to read "Jordan Huey".

2/17/18



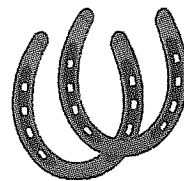
## Holleyman Family Trust

100 North Industrial Drive

Portales, NM 88130

[ekkibbe@yahoo.com](mailto:ekkibbe@yahoo.com)

♦ 505.699.4768 ♦ 505.699.9623



*Like us on Face book: John D. Holleyman Invitational Roping*

---

February 11, 2018

To Whom It May Concern:

The Holleyman Family Ranch would like to express our sincere interest in continuing the development of the Wind Development Project – Viento Loco in Torrance County. My dad, John D. Holleyman, passed away in May of 2013. He spent the final 14 years of his life working diligently with various wind development companies to bring a project to fruition on the Holleyman Ranch.

John D. and Eva Mae Holleyman bought the first part of the ranch in September of 1956. He spent 57 years of his life raising mohair goats, sheep and cross-bred cattle on the ranch. One of his saddest days was in 2000 after a three-year drought when he was forced to sell all his cows. Despite excellent management, he could no longer afford to feed his cattle. His land was paid for, and he owed not a dollar on the ranch, but the drought forced him to sell all the cattle he spent a lifetime breeding into the herd.

His grandson, J. D. Kibbe, a third generation rancher in the family, now manages the ranch. He is working to rebuild the cattle herd his granddad worked so hard to build. The wind development program on our family ranch would allow us to survive climate changes and droughts that are beyond our control.

We have seen first-hand what benefits the wind development projects have brought to small schools. In the Grady, Melrose, Dora, and Elida School Districts, students are benefitting from the revenue generated from wind. These are viable small schools that serve the agricultural communities in an exemplary way. What a difference this would make for small schools in Lincoln and Torrance counties!

All revenue generated from the wind development project would benefit the area economically—local businesses, community services, and providing jobs for young and old alike in this area. Please look at the many positive aspects of this wind development project for future generations.

Sincerely,

Holleyman Family Trust  
Karen Kibbe, Trustee

March 8, 2018

Public Regulation Commission  
1120 Paseo de Peralta  
PERA Building  
P.O. Box 1269  
Santa Fe, NM 87504

To Whom It May Concern:

We are fourth and fifth generation ranchers at Ancho, New Mexico located in Lincoln County. One year ago, our family signed on with Pattern Energy with the hope that the Corona Wind project will come to fruition.

We strongly support this project for many reasons. We believe in renewable clean energy and the wind turbines are a non-polluting source creating that energy. Jobs will be created and there will always be a need for those who want to work on turbines. Our local college is offering a course on Wind Turbine Technology and Mechanics. The training will enable these people to work anywhere where turbines are built. We know that our small rural schools will benefit from the revenue that the turbines will produce and in the short-run from an increase in students. Hopefully, some of these families will like our area and decide to make it home!

For us as ranchers, having the added income from wind turbines will help to sustain and to maintain what we already treasure, the land our forefathers worked so hard to pass down from one generation to another. Due to the rising costs of operations, the unpredictability of the weather, and the lack of the cattle market to progress, it becomes more of a challenge to stay in business every year.

We are excited about the possibilities that can come from this project which will benefit all in our community.

Sincerely,

*Susan Hightower, Bill Hightower, Bryan Hightower*

Susan, Bill, and Bryan Hightower



February 2018

To Whom it may concern:

Our family is excited about the Corona Wind Project. As ranchers, we have used windmills to pump underground water to the surface for wildlife, livestock and human use. Using turbines to convert wind energy into electricity will benefit many people and businesses. Transmission lines to deliver electricity great distances will make lots of good things happen.

Our rural population welcomes employment opportunities related to the wind project. The roads are noticeably improved where Pattern construction is involved. Pattern bird specialists and other personnel inform landowners about their purpose and respect gates. The Corona area, Lincoln County, New Mexico and beyond will benefit from the revenue the Corona Wind Project provides.

Corona is located in central New Mexico and I am hopeful we will be able to eventually have a branch college which offers training in wind related careers.

Wind turbines are compatible with wildlife and livestock, so ranchers and other landowners have multiple land use options provided by wind turbines.

Sincerely,

A handwritten signature in cursive script that reads "Betty Ann Bell".

Betty Ann Bell  
Bell Cattle Company  
PO Box 417  
Corona, NM 88318

MARJON LAW

238 Griffin St.  
Santa Fe, NM 87501  
505-980-2559

February 13, 2018

New Mexico Public Regulations Commission:

I am writing to express full support of the Corona Wind project. As the son of a sixth generation rancher, I cannot state how beneficial this project will be to the ranchers, as well as the surrounding communities in the area. For years there has been a drastic need for revenue in an area that was once thriving, but has since seen its better days. It is a community that represents the heart of New Mexico, based on ranching, agriculture, self reliance and hard work. The Corona Wind project will bring life back into the land, the hearts of the people and the bank accounts of the support communities.

As the son of a rancher, I have struggled with how my generation and the generations to follow would be able to, not only retain our ranch, but also make it a viable, sustainable operation. The Corona Wind project has the potential to make long term sustainability and viability of the area ranches and communities possible. The capital improvements in the communities that will result from the new and increased revenues will be invaluable.

In this day and age of global warming, we have to seek alternative, clean energy. New Mexico is in a perfect position to start leading the way with wind.

I highly recommend that the New Mexico Public Regulations Commission approve the Corona Wind project.

Sincerely

A handwritten signature in dark ink, appearing to read "Joachim Marjon", followed by a long horizontal flourish.

Joachim Marjon  
Attorney At Law

February 16, 2018

To Whom It May Concern:

I am writing in regard to the Wind Energy Turbines that have been proposed for the Corona, NM area.

In short, I'm for it.

As long as I have been alive, I have never known a time when the wind didn't blow. It makes sense to use the most reliable resources we have and the wind is a constant in our country.

Being from a ranching family, we have always made our living from the land with the cattle. Like us, cattle must have water and we pumped that water from the ground using windmills. Therefore, we have always needed wind power for our livelihood.

Not much would change for those of us still asking the wind to help us make a living except the size and number of mills. We'd still be harnessing the wind for provision.

Also, having lived with electricity my whole life - and many times experiencing none because of power outages - I am definitely in favor of continuing to produce it.

Certainly the landscape will be changed. I lived in the San Francisco Bar Area for nearly ten years, with wind chargers always in view. They weren't detractors, but rather accepted as part and parcel to modern man.

Simply put, I'm happy that we and our near neighbors may get some help in making a living and that our not-so-near neighbors can maintain our 21st century standard of living; namely, electricity.

Sincerely,

Marvin Pounds  
Pinos Wells, Torrance County, New Mexico  
925-305-6403

Ana Lauren McCullough M.D.  
238 Griffin St  
Santa Fe, NM 87501

February 13, 2018

New Mexico Public Regulations Commission:

I fell in love with Duran, New Mexico, shortly after I fell in love with my husband Joachim Marjon. He grew up living and ranching on the Shafie Hindi ranch in Duran. Although careers and distance make getting to the ranch more difficult these days, it is our first choice as the place to be when time allows.

Recently, there was a wind project in the nearby Encino area that seemed to go up over night. If I ever had any concerns about how a wind farm might change the ranch or the surrounding areas, the Encino area farm quelled any hesitations. I truly think the towers are amazing. We were able to drive up to some of the Encino towers. I was shocked by how little sound they made, and by the small foot print of the pads. The grasses had recovered from any disturbance and were growing back to the edge. The best part was watching the cows grazing and on occasion, enjoying a siesta on the pads themselves. It was as if the towers had always been there.

I urge the New Mexico Public Regulations Commission to move forward with the Corona Wind project. It is a progressive and environmentally sound project that would bring so much to a very deserving community.

Sincerely,

A handwritten signature in cursive script that reads "Ana Lauren McCullough". The signature is written in dark ink and includes a long, sweeping horizontal line at the end.

Ana Lauren McCullough M.D.

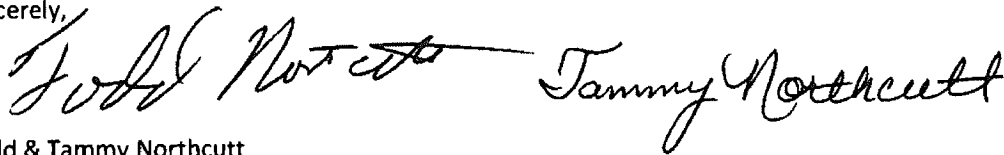
February 13, 2018

Attn: Public Regulation Commissioners

This letter is in support of Pattern Energy the company that is proposing the construction of the Corona Wind Farms. As landowners, with property within Pattern Energy's Broadview Wind farm, we have had direct contact with the company and its' employees. Throughout the process of construction and now the operation of the Broadview Wind Farm we have firsthand experience with the company. Ward Marshall, from the Houston office, has made himself available and continues to do so to address any questions and/or concerns that the landowners might have. Pattern Energy held frequent landowner meetings to keep all landowners abreast of the progress of the project and any problems they might be experiencing. During the process of construction, if there were any concerns with the subcontractors, Pattern Energy was quick to address and correct those concerns. Martina Rusk, located in the local office, is readily available to assist the landowners. If we have a question she cannot answer, she will direct us to the correct individual or individuals. We have had a lot of conversations with Literay Harte. Literay is located in the Houston office. She has been extremely helpful and forthcoming with information regarding landowner rent and royalty payments. Pattern Energy continues to meet their financial obligation to the landowners as outlined in the contract. Once the construction of the project was complete, Pattern Energy made every effort to restore the land, as much as possible, to the original state. The restoration of the land is very important to us as it is to most landowners, but it is especially important to us due to the fact one parcel of property that Pattern Energy developed was homesteaded by the Northcutts in the early 1900's. We are the fourth generation of Northcutts to farm this land. We plan to leave it to our children and want it to be as viable as possible.

Again, we strongly support Pattern Energy and request you approve their request as submitted.

Sincerely,

The image shows two handwritten signatures in black ink. The first signature is 'Todd Northcutt' and the second is 'Tammy Northcutt'. Both are written in a cursive, flowing style.

Todd & Tammy Northcutt



February 20, 2018

New Mexico Public Regulation Commission  
1120 Paseo De Peralta  
Santa Fe, New Mexico 87501

To Whom It May Concern:

I am a reading interventionist at Corona Elementary Public School. Our rural school is very small and extremely high performing. I'm also a parent of a child who will attend this unique school next year. As both a teacher and parent living and working in Corona, I'm in strong support of the Pattern Energy Wind Farm in Lincoln County. We know that it's revenues will have a positive impact on our students and community.

Because of our location, economic development is difficult. This has caused Corona to become a very tight knit community who heavily relies on each other. Our school plays a critical role in this. Unfortunately, due to our small size we have to rely on Emergency Supplemental Funding each year to keep our doors open. The commission's approval of the Pattern Wind Energy application would greatly assist to relieve some of this financial strain on our school.

My husband and I moved to Corona purposely, so that our daughter could go to this school and so that I could work in this amazing community. It was a life changing decision and hope that others will have this opportunity. The Pattern Wind Farm will make this happen and create a brighter future for all those who are currently living here.

Sincerely,

A handwritten signature in cursive script, appearing to read "Kayce Patterson".

Kayce Patterson, Reading Interventionist  
Corona Public Schools

February 22, 2018

New Mexico Public Regulation Commission  
1120 Paseo De Peralta  
Santa Fe, New Mexico 87501

To Whom It May Concern:

I am writing to express my strong support for the Pattern Energy Wind Farm in Lincoln County and to encourage the approval of the project's application with the New Mexico Regulation Commission. As residents of the Corona area for nearly 60 years we greatly understand and appreciate what the wind farm will bring to our community and our school district. I encourage the commission to approve the project's application and decidedly help a small rural community in impacting the economic benefit to the area and the state.

Our involvement with the area has been in a number of different capacities. Retiring from El Paso Natural Gas and as a driver for the Corona School District we have firsthand knowledge of what a project of this type will bring in economic improvement. El Paso Natural Gas maintained a gas plant with family housing until the early 1990's. When the plant became computerized families lost jobs and the school lost students from families having to relocate. The economic impact of losing all those residents has partly eroded the family businesses in Corona.

In addition, we have spent just as many years trying to acquire land for ourselves and children to have a greater tie to the community. We now have grandchildren that also appreciate and enjoy the properties we have acquired, but assuring that land will remain in the family has always been a grave concern. The Pattern Energy Project would provide the opportunity for many more generations to enjoy what we worked so diligently to provide for our children and now their children.

We deeply request that the Public Regulation Commission approve the Pattern Wind Energy application. The wind project investment into the state and more specifically this local area will exceed \$1 billion and provide tax revenues for Lincoln and Torrance Counties, the Corona School District and many of the ranching families. In addition the project will provide much needed temporary and permanent jobs in the area for local and county residents, which may restore part of the town.

Sincerely,

Rogene and Sandra Alford

*Rogene Alford*  
*Sandra Alford*

March 16, 2018

Mr. Sandy Jones  
Chairman  
New Mexico Public Regulation Commission

Dear Mr. Jones

I am writing this letter in support of Pattern Development and its efforts to develop, build and operated wind generated energy within the state of New Mexico.

As a landowner in the Broadview area that will be a participant in the Grady Wind Energy Center expansion phase, I can tell you that they have been great to work with and have addressed any and all concerns that I may have. There have been allegations going around that Pattern Development has not been meeting the obligations that they have contractually promised. I will personally attest that any and all contractual and financial obligations made to me have been met as promised and agreed to.

Pattern Development has made a significant financial investment in the Broadview area, along with payments to the Village of Grady, Grady Schools and Texico Schools. Pattern has also provided funding toward the construction of a new fire station in Broadview. They, in conjunction with SunZia transmission with also be making significant investments in the Corona area in the future.

There are many cases and instances in which Pattern Development will have to come before the PRC. I ask that they be treated with an open mind and that the PRC can be a positive force in helping them and all renewable developers to be successful for the benefit of New Mexico.

Respectfully Submitted

Paul Stout  
Broadview NM

Dan Bell  
PO Box 381  
Corona, NM 88381  
March 6, 2018

To Whom It May Concern:

As Lincoln County landowners and Corona community members, my family and I support the Corona Wind Project. The Corona Wind Project will provide many economic benefits both to my family and to the community. My wife and I have two college age children, who will soon be graduating and beginning careers. The Corona Wind Project will make it possible for them to return to the ranch and raise their families in the rural community that our family has called home for five generations. The Corona Wind Project will also ensure that our family ranch will continue to remain in the family, and will have a chance to grow and prosper.

Corona is a small rural village located in central New Mexico, and we welcome the economic boost that construction of the Corona Wind Project will bring to the area. This project will bring much needed jobs to our area and will generate tax revenue for both local community services in Corona and our school system. My wife is a teacher at Corona Public Schools, and additional funding for the school will benefit all the students in our district.

We strongly support the development of the Corona Wind Project and encourage approval of the PRC application.

Sincerely

A handwritten signature in dark ink, appearing to read "Dan Bell". The signature is stylized with a large, circular initial "D" and a cursive "Bell".

Dan Bell

Monty and Kelley Pounds  
PO Box 8  
Corona, NM 88318

February 8, 2018

To Whom It May Concern:

As landowners near Corona, New Mexico, we are encouraged by the prospects of having the Corona Wind Project come to our area.

This is an extremely rural area without much business other than agriculture in the form of cattle and sheep ranching. While this is a lifestyle we enjoy, with its privacy and wide open spaces, it does mean that about the only other salable resources we have for our businesses are the sun and plenty of wind. Our wide open spaces with all this wind allows us to contribute even more to the national economy by providing electricity to power homes and businesses.


The construction of the wind tower sites and the roads leading to them has already benefited the local economy as the wind company contractors and their workers stay in the small town motels and purchase goods at the surrounding markets and gas stations. From what we have seen of construction so far, the wind companies are also using local suppliers for concrete and gravel products, which generates much needed income for these small companies in New Mexico's difficult economy. The wind companies are also leaving the construction sites clean, so that grasslands for grazing cattle and sheep remain intact.

Revenues generated from leases with the Corona Wind Project will also enable family farms and ranches to be more profitable during a time when small producers struggle to provide for their families while having to compete with more industrialized agribusiness concerns.

We are happy to support the Corona Wind Project in our area.

Sincerely,

  
Monty Pounds

  
Kelley Pounds

February 8, 2018

To: Public Service Company of New Mexico  
From: Rached Hindi  
Subject: Pattern Energy's Corona Wind Project

Dear Public Service Company of New Mexico,

I am a ranch owner in Duran, NM. I emphatically support Pattern Energy's Corona Wind Project. You and I know that the project will greatly help the local economy, help the ranchers in the area, bring jobs, and improve our schools. It'll do all the good for many many people.

We ranchers are patriotic and respectful of the environment. So, on a grander level, this wind project will supplement our county's energy supply, reduce our dependence on foreign energy and genuinely make the United States more secure. And, it'll do all that cleanly.

Pattern's Corona Wind Project is a must do project for all the right reasons.

Respectfully,

*Rached Hindi*

Rached Hindi  
432-770-3848  
rhindi@hindienergy.com  
Duran, NM

Ricky Huey

PO Box 85

Corona, NM 88318

To Whom It May Concern:

The chance to grow up in Corona, New Mexico on the family ranch is one that I and my family appreciate more every day. The long days of tending to the stock can be a challenge but a manageable one. Most family ranchers accept this and understand how difficult it is to make ends meet. The expenses of operating a cattle ranch grow every year, but the return on one's financial investment seem to lessen. Still we all do what is necessary to preserve the opportunity to enjoy the life that has passed down through generations of hard work and sacrifice. You work hard to pass down the same vision to your own family and kids and hope they too can continue this way of life. Sadly, it is not just a question of will they, but can they. Can they continue to find a way financially to preserve a life that sometimes can take more financially than it gives. The reality is that drought and unstable market conditions have plagued our area and much of the state. The renewable energy pathway is a welcome one that affords the preservation of this wonderful way of life..

This Corona Wind Project can be beneficial to not only my business and family, but also to the community, the school and many other businesses and ranches in the Corona area.

Our local schools struggle to fund and offer beneficial programs to our children. Families often must reluctantly move to find jobs to supplement ranching income. Sometimes families are pulled apart. Wind energy can provide a new income and help ranching families regain a foothold on a way of life that shouldn't be forgotten. Wind energy can be a beginning and perhaps a new foundation to build from for future ranching generations.

I support the Corona Wind Project and Pattern Energy in their efforts to make this a success for our families, our town, and our community.

Truthfully yours,

*Ricky Lane Huey* 2/12/2018

Ricky Huey



Shafie Hindi Sr.  
7805 Academy Trail NE  
Albuquerque, NM 87109

February 11, 2018

To Whom It May Concern:

It is my deep hope that the Corona Wind project comes to pass and is extremely successful. My Hispanic grandfather, Ventura Duran and his two brothers, Blas and Espiridion, homesteaded the area in the early 1900's. They were hard working, risk taking, industrious individuals, with the foresight to engage in numerous endeavors that allowed them to prosper and flourish. In addition to raising sheep on a large ranch they had put together, they dug a massive well in Duran for the sole purpose of selling water to the railroad that allowed the El Paso and the North Eastern Railways to be connected. Later my father, Alex Hindi, a merchant and immigrant from Lebanon, married Clarita Duran and was able to purchase the original Duran Ranch and a few adjoining ranches. Like the Duran brothers, my father Alex did whatever it took to make ends meet and to provide a decent and honest lifestyle for not only his family but for numerous men and women.

In short, I was raised to be open to change and to understand that in order to keep and take care of large areas of land that one has to move with the future and not let opportunity pass you by. The Corona Wind project is one of those opportunities. It is a God send. Not only can my children, grandchildren and great grandchildren benefit from the revenue and continue to ranch and take care of the land, but the community at large will see much needed change and opportunity. I know that my father and grandfather would say YES, YES, YES to letting the wind be our partner instead of cursing it.

Lastly, while others may think that the towers distract from the beauty of the land, I think that they force you to slow down, take a look, pay attention and appreciate the land and the wind as one, nature at its best. With that, please move forward to approve the Corona Wind Project.

Sincerely,

A handwritten signature in cursive script that reads "Shafie Hindi".

Shafie Hindi Sr.  
Rancher age 93

February 14, 2018

Public Regulation Commission  
P. O. Box 1269  
Santa Fe, NM 87504

Commissioners:

I want to express my support for the Corona Wind Project being developed by Pattern Development.

I was raised in the Corona area and have shares in Sharp Ranch Inc., which is a family ranch started by my dad when he homesteaded there in the late 1920s. Having the ranch passed on to the next generation is very important to me. Being a part of the wind farm I feel would assure this to occur.

I now live in Claredon, Texas and have seen the economic impact a wind farm can have on a community. Local businesses, schools, city, and county government have expanded with the help of monies made available through the wind farms in the area. I am sure the wind farm in Corona would have the same effect.

I would ask for your support in this project which I believe will be a plus for the local community as well as the state of New Mexico.

Sincerely,



Patsy Sharp Tubbs



*Sharp Ranch Inc.*

HC 68 Box 11  
Corona, NM 88318  
Phone (575) 848-4966

*February 13, 2018*

Public Regulation Commission  
P.O. Box 1269  
Santa Fe, NM 87504

*Commissioners:*

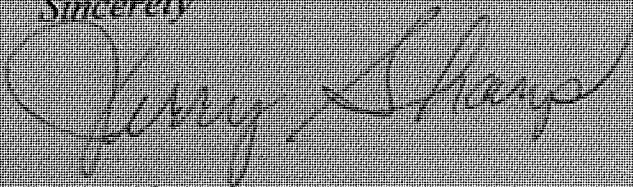
*As a shareholder in Sharp Ranch Inc., I want to express my support for the Corona Wind Project being developed by Pattern Development.*

*My dad came to the Corona area in the late 1920s and homesteaded on some of the land which has become Sharp Ranch Inc. I am the second generation to live on the ranch and before long will pass it on to the third generation. Being part of the Corona Wind Project will make that happen.*

*The economic impact will not only help Sharp Ranch but all the ranches in this area as well as the village of Corona, which is in dire need of help. As a retired teacher from Corona Schools, I can see many ways it will improve the school system.*

*In closing I would ask for your support of this project which I believe will only help the whole state of New Mexico, especially the Corona area.*

*Sincerely*



*Jerry Sharp*

Soledad Marjon Hindi  
308 La Plata Rd NW  
Albuquerque, New Mexico 87107  
PO Box 91  
Duran, NM 88319

February 12, 2018

To Whom It May Concern:

The Corona Wind project will be of great benefit to Torrance County, the community of Duran and the surrounding area. The creation of new jobs, revenue and capital improvements through the implementation of renewable wind energy will be invaluable.

Generations of ranchers have struggled for years to maintain a life style based on providing large scale food production. The changing times have made it increasingly difficult to maintain a ranch lifestyle in a sustainable manner. Having the Corona Wind project in the area, will provide future generations the ability to continue to ranch in a more productive and less burdensome way due to the increased revenue provided through wind royalties. It will be conceivable for the first time, to ranch with the integrity and productivity not seen for at least 25 years, due to rising labor, material, feed and livestock costs, which have become insurmountable.

The clean, renewable energy footprint of the Corona Wind project will be an asset that cannot be duplicated by any other means. To be at the forefront of such a necessary and progressive project would not only benefit the environment well beyond the small area located in Torrance County, but would have far reaching benefits that cannot be discounted. I encourage the New Mexico Public Regulations Commission to approve the Corona Wind project.

Thank you,

Sincerely,

A handwritten signature in cursive script, appearing to read "Soledad Hindi".

Soledad Hindi  
Rancher Duran, New Mexico



**BEFORE THE NEW MEXICO PUBLIC REGULATION COMMISSION**

IN THE MATTER OF THE CORONA WIND )  
COMPANIES' JOINT APPLICATION FOR THE )  
LOCATION OF THE CORONA WIND PROJECTS )  
AND THE CORONA GEN-TIE SYSTEM IN )  
LINCOLN, TORRANCE AND GUADALUPE )  
COUNTIES PURSUANT TO THE PUBLIC UTILITY )  
ACT, NMSA 1978, §62-9-3 )

**Case No. 18-**\_\_\_\_\_

ANCHO WIND LLC, COWBOY MESA LLC, DURAN )  
MESA LLC, RED CLOUD WIND LLC, TECOLOTE )  
WIND LLC, VIENTO LOCO LLC, )

**JOINT APPLICANTS.** )

# EXHIBIT CC-4



**2993 Quay Road 61  
Tucumcari, New Mexico 88401**

**February 19, 2018**

**Commissioner Sandy Jones  
Chairman  
Public Regulation Commission**

**Dear Chairman Jones**

**The Board of Directors would like to reaffirm its support of Pattern Development and its efforts to construct and operate renewable energy projects in New Mexico.**

**Pattern Development and Pattern Energy have made significant investments in the Broadview area and are planning significant investments in the Corona area in conjunction with SunZia transmission.**

**Several of our members are participating landowners in Pattern Development projects and are very satisfied in working with them and that all obligations promised by and owed to the landowners have been met.**

**We ask the PRC to help support our goal of renewable energy development for rural communities and economic opportunity for landowners. Companies such as Pattern represent the most critical steps in making this reality happen.**

**Respectfully Submitted**

**The Board of Directors  
Paul Stout, Chairman**

**Curry County New  
Mexico**  
**Board of County Commissioners**  
417 Gidding Street, Suite 100  
Clovis, NM 88101  
Phone (575) 763-6016 • FAX (575) 763-3656



**COMMISSIONERS**  
**Angelina Baca · District 1**  
**Ben L. McDaniel · District 2**  
**Chet Spear · District 3**  
**Seth Martin · District 4**  
**Robert Thornton · District 5**  
  
**County Manager · Lance A. Pyle**

February 16, 2018

RE: Pattern Energy and the proposed Corona Wind projects

Public Regulatory Commissioners:

Pattern Energy has been and continues to be a great partner in the Curry County community in working with the County to bring Renewable Energy to market. They have worked extremely well and been responsive to the County Road Department on repairing and maintaining roads and services related to county infrastructure. In addition, Pattern has contributed to the local community by supporting our local schools and assisting with the funding of the Broadview Fire Station.

In closing, Curry County is very appreciative of Pattern Energy and looks forward to continuing working with them on additional projects. If approached by other Counties in the jurisdiction of the proposed Corona Wind projects for feedback we would be happy to share our positive perspective in working with Pattern.

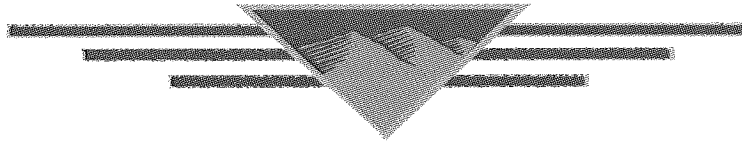
If you have any questions, please feel free to contact me.

Sincerely,

Lance A. Pyle, ICMA-CM  
Curry County Manager

CC: File





575-849-5511

**Village of Corona**  
**461 Corona Main / PO Box 37**  
**Corona, New Mexico 88318**  
[villageofcorona@plateautel.net](mailto:villageofcorona@plateautel.net)

**Fax 575-849-5512**

February 21, 2018

New Mexico Public Regulation Commission  
1120 Paseo De Peralta  
Santa Fe, New Mexico 87501

To Whom It May Concern:

I am writing on behalf of Pattern Energy to continue to develop the Pattern Wind Farm in Lincoln County. The Village of Corona believes the Pattern Wind Farm project will provide both environmental and economic benefits to the Village of Corona and Lincoln County. Not only will the Pattern Wind project ensure clean power availability, but also a significant financial investment that will provide much needed economic development opportunities for our community and Lincoln County.

On behalf of the Village of Corona, I respectfully request favorable consideration of the Pattern Wind Project in Lincoln County.

Sincerely,

William E. Hignight, Mayor  
Village of Corona



March 2, 2018

Public Regulation Commission  
1120 Paseo De Peralta  
PERA Building  
P.O. Box 1269  
Santa Fe, NM 87504

Commissioners:

This letter is being sent to voice support for Pattern Energy, the company proposing the Corona Wind Farm near Torrance County.

As CEO of Plateau Telecommunications, Incorporated, a communications company located in Clovis, allow me to speak firsthand about Plateau's experience with Pattern Energy.

In 2016, Pattern engaged Plateau to provide broadband fiber services to their wind farm, Broadview Wind Facilities, in northern Curry County. As a community partner looking for ways to ensure sound, economic development in its serving area by providing "high quality, reasonably priced, progressive communications services" to its members, Plateau was eager to assist; that, coupled with Pattern's similar commitment to providing new growth in advanced energy technologies made it a sure fit. Early on, Pattern took a pro-active approach in keeping all involved apprised of its progress, addressing questions or concerns from landowners or a subcontractor such as Plateau in a very timely and efficient manner. Pattern Energy has met and continues to meet all commitments to Plateau as agreed.

It is also apparent that Pattern is a good steward of the land – a valuable resource in New Mexico, making a concerted effort to restoring the area.

Knowing firsthand their commitment to local communities, I encourage you to approve Pattern's request to construct the Corona Wind Farm.

Sincerely,

A handwritten signature in cursive script, reading "David J. Robinson".

David J. Robinson  
Chief Executive Officer



# New Mexico State Senate

State Capitol  
Santa Fe

COMMITTEES:

MEMBER:  
• Conservation  
• Education

## SENATOR PAT WOODS

R-Curry, Quay & Union-7

4000 CR M.  
Broadview, NM 88112

Home: (575) 357-8594  
E-mail: pat.woods@nmlegis.gov

February 11, 2018

Attn: Public Regulation Commissioners

I am writing this letter in support of Pattern Energy which is the company that is proposing the construction of the Corona Wind Farms near Torrance County. As a participating landowner within Pattern Energy's Broadview and Grady Wind Farms in Curry County I have firsthand experience in dealing with the company and can speak to their behavior as a business partner.

Pattern Energy has held frequent landowner meetings through the planning and construction of these projects keeping us up to date on the progress and explaining the problems they may be experiencing. Pattern Energy continues to meet their financial obligations to the landowners as outlined in the contract and always notifies the owners before entering their property. The company has a large operation and maintenance facility on site and their staff has provided landowners with their phone numbers and encourages us to call them whenever we have any questions. The company has also been very diligent in meeting the requests of the landowners in regards to restoration of the land after construction which is greatly appreciated since much of the land is farm land.

Again I am in strong support of Pattern Energy and request you approve their request as submitted.

Sincerely,

Pat Woods  
Senate District 7



---

*"Promoting Economic Development in Clovis and Curry County"*

---

February 22, 2018

Dear New Mexico Public Regulation Commissioners:

This letter is in support of Pattern Energy and the Corona Wind Farm near Torrance County. Clovis Economic Development (CIDC) worked with the Village of Grady to complete the economic development incentive package for the Broadview and Grady Wind Farm in Curry County. Pattern is a great community partner who has invested in Curry County and the region through their project investment and their community contributions to the school districts, charity, chamber of commerce, economic development and others.

The Pattern staff are excellent to work with and are quick to respond to questions or needs related to the project. Additionally, Pattern has a professional corporate and local office staff including Ward Marshall, Adam Renz, Lorelee Hunt, Ben Givens and Martina Risk that are always available to the community.

CIDC worked with Pattern in securing the economic development packages to close the project with several government agencies including two local governments, two school districts and Curry County. The economic development and Industrial Revenue Bond process went extremely smooth due to Patterns commitment to the economic development process. Pattern was quick to provide their applications and was always available to meet with all parties involved to complete the IRB process and approvals.

Pattern has also shown their commitment to the landowners and partners throughout the planning and construction of the wind farm. Additionally, Pattern has met their local obligations related to the Payments In Lieu of Taxes to local governments and school districts for 2017.

Clovis Economic Development (CIDC) is in strong support of Pattern Energy and we ask that you approve their request related to the construction of the Corona Wind Farms.

Respectfully,

A handwritten signature in black ink that reads "Chase D. Gentry".

Chase D. Gentry  
Executive Director



February 15, 2018

New Mexico Public Regulation Commission  
1120 Paseo de Peralta PERA Building  
P.O. Box 1269  
Santa Fe, New Mexico 88504

To Whom It May Concern:

On behalf of the Southcentral Mountain Economic Development Association [SCMEDA], I am writing in enthusiastic support of the Pattern Energy wind farm projects in northern Lincoln County, New Mexico. Further, we request NMPRC prompt approval of appropriate permits which will enable these important economic development projects to get started.

SCMEDA completed in 2017, through USDA Rural Development – New Mexico, a regional economic development plan under the USDA SET [Strengthening Economies Together] program. Energy production and export on ranch lands is one of several major economic target areas identified in the SET plan for the Lincoln and Otero County region including Mescalero. We have already been at work coordinating upcoming participation by local small heavy equipment contractors and professional service providers in the region in the initial development phase of Pattern wind and associated transmission projects. We are also hopeful that projects like the ones proposed by Pattern Energy will bring better paying, permanent jobs, and, additional tax revenue for municipal and county government and public school operation in the region. These developments would certainly help to arrest the continuing population decline, business closures and job loss that has occurred across this region since 2013.

Lincoln County has very substantial wind, solar and biomass energy resources, some of the best in the Western United States. The proposed Pattern projects represent the most substantial private capital investment, approaching several billion dollars, made in Lincoln County since the building of the Union Pacific railroad more than a century ago. SCMEDA believes that the application of new technologies, the creation of new public/private partnerships and the development of new markets in the urban West will result in other job creation opportunities for rural New Mexico. We are hopeful that additional private investment will come to this region to develop these and other resources and in doing so, to provide additional permanent jobs for our young people and their families.

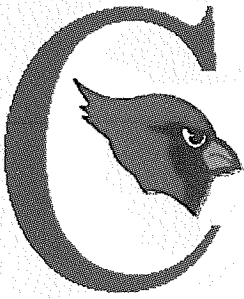
Your serious consideration of the Pattern Energy wind projects' permitting will be sincerely appreciated. Please let me know if the South Central Mountain Economic Development Association can provide additional information and assistance if needed.

With personal regards, I am

A handwritten signature in cursive script that reads "James Miller".

James Miller, Ph.D., Director  
Southcentral Mountain Economic Development Association

[jamespmiller@windstream.net](mailto:jamespmiller@windstream.net); 575.937.2873



## Corona Public Schools

*"Where Excellence Is Never An Accident!"*

[www.corona.k12.nm.us](http://www.corona.k12.nm.us)

February 24, 2018

New Mexico Public Regulation Commission  
1120 Paseo De Peralta  
Santa Fe, NM 87501

To Whom It May Concern:

I am writing to express my strong support for Pattern Energy to continue the work on the Pattern Wind Farm in Lincoln County. As a 20-year veteran teacher of Corona Public Schools, I am excited about the great opportunities it will bring to our community and our school district. I encourage the commission to approve the project's application and unquestionably help a small, rural community flourish through economic development locally which further helps the state as a whole.

The Erramouspe family has been invested in this community for more than 75 years with more than three generations earning high school diplomas from Corona High School. In 1995, my husband and I made this community our home where we have raised our family. After moving to New Mexico, I earned a master's degree in education from New Mexico State University and became the language arts teacher for grades 7-12. Throughout the 20 years of teaching students in Corona, it was been a pleasure and a challenge to meet the needs of every student who walks through my door. Students here have a wonderful opportunity to earn a high quality education from teachers who truly care about the success of each child. After graduation, many of our students have earned their college degrees by earning academic scholarships and are now exponentially impacting the lives of other students and people in New Mexico and across the United States. It's so exciting to see their success and to know that it all started here.

I didn't become a teacher to become rich. It truly is fulfilling to know that I've been able to help students reach their goals through the years. However, I still have an obligation to take care of my own family. Even with the salary of a Level Three teacher, it's hard to make ends meet, especially after the death of my husband three years ago. I have a daughter who is currently a sophomore in college with the goal of attending law school and a daughter in the sixth grade. Since the recession in 2008, teachers have only received a \$1 per year salary increase at Corona Public Schools while the cost of health care has increased anywhere from 2 percent to 8 percent EACH year. In essence, I've taken home less and less each year while the cost of living continues to rise. The superintendent and school board are dedicated to providing teachers with salary increases with the economic boost from the Pattern Energy Wind Farm. Additionally, the district will be able to meet the budgetary gaps between what the state mandates yet fails to fund.

I urge the commission to approve the Pattern Wind Energy application. Corona is a hardworking, heart-filled community that deserves this opportunity. With that approval, you will be investing in the current community members of Corona and the legacy of its future.

Sincerely,

Roxanne Erramouspe





## Corona Public Schools

*"Where Excellence Is Never An Accident!"*

www.cpscardinals.org  
575-849-1911

Public Regulations Commission  
P.O. Box 1269  
Santa Fe, New Mexico 87504

RE: Pattern Development Corona Wind Projects

March 1, 2018

Commission:

I am writing this letter to support the wind projects that Pattern is considering for the Corona area. As 15 year member of the Corona School Board, I have seen dramatic changes to our community and the Corona Public School. With the automation and reduction in force in the natural gas industry in the 1980-1990's, Corona Public Schools took a dramatic hit in enrollment and has never fully recovered. The energy industry can once again give our school and community a boost in economic development through increased population and school enrollment.

The investment in our school district would be a relief to the years long struggle to educate the Corona area children who suffer in the offerings that the larger schools can provide, but who continue to be successful adults who continue to leave our community due to lack of jobs and economic development. The ranches and area business that these kids come from will also benefit through increased utilization and income and along with them, new allied businesses will be able to bring our children back from college to help build and strengthen the Corona area.

The Village of Corona has suffered over the last ten years or so, starting with a drought that drove people away in search of jobs, and currently the economy has not truly recovered here. This is demonstrated by the reduced enrollment in our school, loss of a café and grocery store and other businesses up for sale at this time. Wind development would be a boon for our proud little village that would increase activity, residents and allied services to the development.

Please consider the impacts to our facility, as well as, the local residents and the economy when approving the Corona Wind Projects being developed by Pattern.

Sincerely,



# Corona Public Schools

*"Where Excellence Is Never An Accident!"*

[www.cpscardinals.org](http://www.cpscardinals.org)

575-849-1911

Shad H. Cox

Vice President, Corona Public School Board of Education



## Corona Public Schools

*"Where Excellence Is Never An Accident!"*

[www.cpscardinals.org](http://www.cpscardinals.org)

575-849-1911

February 21, 2018

New Mexico Public Regulation Commission  
1120 Paseo De Peralta  
Santa Fe, New Mexico 87501

To Whom It May Concern:

I am writing to express my strong support for Pattern Energy to continue the work on the Pattern Wind Farm in Lincoln County. As the superintendent of Corona Public Schools I fully understand the great possibilities it will bring to our community and our school district. I encourage the commission to approve the project's application and decidedly help a small rural community in impacting the economic benefit to the area and the state.

Corona Municipal Schools is one of the tenth smallest schools in New Mexico by enrollment. The district has had to depend on emergency supplemental funding beginning in the early 1990's. In addition, legislation has continued to increase the gap of the district being able to meet the budgetary requirements of continued unfunded mandates. The district must find additional means to try to close the gap and find new sources of recurring revenue to reduce our impact on the state general fund.

As a resident from this community from the age of fourteen, I have witnessed the determination and understanding of a community at large to find solutions to our local economy. I requested that my parents move to Corona as a teenager as it was a great community of people, in my opinion. The local land owners banded together to find an answer to assist their opportunity to keep ranch land within their family, but to also boost the local school and community. They realize that if the school does not exist then our older generations will suffer from lack of essential services.

I urge the commission to act prudently and approve the Pattern Wind Energy application. The wind project investment into the state and more specifically this local area will exceed \$1 billion and provide tax revenues for Lincoln and Torrance Counties and three school districts in Lincoln County. In addition the project will provide much needed temporary and permanent jobs in the area for local and county residents.

Sincerely,

Travis Lightfoot, superintendent  
Corona Municipal Schools

**City Manager**  
JUSTIN A. HOWALT, P.E.

**Assistant City Manager**  
CLAIRE H. BURROUGHS

**City Attorney**  
DAVID F. RICHARDS

Post Office Box 760  
Clovis, New Mexico 88101-0760  
Phone (575) 769-7828



**CLOVIS CITY COMMISSION**

**Mayor**  
DAVID LANSFORD

**Mayor Pro-Tem**  
JUAN F. GARZA

**Commissioners**  
CHRIS BRYANT  
HELEN CASAUS  
LADONA K. CLAYTON  
GARY L. ELLIOTT  
FIDEL MADRID  
THOMAS W. MARTIN III  
SANDRA TAYLOR-SAWYER

March 8<sup>th</sup>, 2018

Attn: Public Regulation Commissioners

**Re: Pattern Energy**

Please accept this letter of support for Pattern Energy and their efforts to construct wind farm projects in New Mexico.

Pattern Energy is constructing a wind farm in eastern New Mexico, in the area around Broadview and Grady. Throughout this process, the City of Clovis has heard many complimentary comments regarding the project and the positive impact it will have on area farmers, and of the relationship between Pattern Energy and the area as whole. Pattern has worked diligently with the Clovis Industrial Development Corporation (CIDC) regarding the PILOT which has helped the area schools.

The City of Clovis is grateful to Pattern Energy for their investment in our neighboring communities, and farmers in Curry County, and the great partnerships they have developed in the area as a result.

Sincerely,

David Lansford  
Mayor

**BEFORE THE NEW MEXICO PUBLIC REGULATION COMMISSION**

IN THE MATTER OF THE CORONA WIND )  
COMPANIES' JOINT APPLICATION FOR THE )  
LOCATION OF THE CORONA WIND PROJECTS )  
AND THE CORONA GEN-TIE SYSTEM IN )  
LINCOLN, TORRANCE AND GUADALUPE )  
COUNTIES PURSUANT TO THE PUBLIC UTILITY )  
ACT, NMSA 1978, §62-9-3 )

Case No. 18-\_\_\_\_\_

ANCHO WIND LLC, COWBOY MESA LLC, DURAN )  
MESA LLC, RED CLOUD WIND LLC, TECOLOTE )  
WIND LLC, VIENTO LOCO LLC, )  
)  
)  
)

JOINT APPLICANTS. )  
\_\_\_\_\_

**AFFIDAVIT OF CRYSTAL COFFMAN**

**BEFORE THE NEW MEXICO PUBLIC REGULATION COMMISSION**

IN THE MATTER OF CORONA WIND )  
COMPANIES' JOINT APPLICATION FOR )  
THE LOCATION OF THE CORONA WIND )  
PROJECTS AND CORONA GEN-TIE )  
SYSTEM PURSUANT TO THE PUBLIC )  
UTILITY ACT, NMSA 1978, § 62-9-3 )

Case No. 18-\_\_\_\_-UT

ANCHO WIND LLC, COWBOY MESA LLC, )  
DURAN MESA LLC, RED CLOUD WIND )  
LLC, TECOLOTE WIND LLC, VIENTO )  
LOCO LLC, )

JOINT APPLICANTS )  
\_\_\_\_\_ )

**AFFIDAVIT OF CRYSTAL COFFMAN**

STATE OF TEXAS )  
COUNTY OF Harris ) ss.

I have read the foregoing Direct Testimony, and it is true and accurate based on my own knowledge and belief.

*Crystal Coffman*

SUBSCRIBED and sworn to before me this 5<sup>th</sup> day of March 2018.

*Litarey Harte*  
NOTARY PUBLIC

8-28-2018  
My Commission Expires

