



December 11, 2018

BowArk Energy Ltd.
Suite 3405 Devon Tower
400 – 3 Avenue SW
Calgary, Alberta T2P 4H2

Pattern Development Lanfine Wind ULC
355 Adelaide Street West, Suite 100
Toronto, ON M5V 1S2

RE: Lanfine North Wind Power Project and Lanfine South Wind Power Project

Dear Neighbour:

Thank you for your ongoing interest in the Lanfine North Wind Power Project and in the Lanfine South Wind Power Project (the Project). In September 2018, we provided Project updates, including further information on the wind farm layout and turbine type.

We have received additional feedback from Alberta Environment and Parks – Fish and Wildlife (AEP-FW) and further stakeholder feedback on the Project layout. As a result, we have revised the proposed Project layout.

Accompanying this letter are three documents that provide more detailed information about the proposed Project modifications and BowArk and Pattern Development's public involvement program. Included are:

- Project maps showing the Project boundaries for Lanfine North and Lanfine South, updated turbine locations, infrastructure, noise contour, and shadow flicker results;
- two visual simulations reflecting the modified Project layout; and
- the Alberta Utilities Commission Brochure (AUC), *Public involvement in a proposed utility development*.

Project Updates

Based on your feedback, as well as wildlife and environmental considerations, we have:

- removed two turbines (48 and 66) from the Project;
- re-sited six turbines (1, 47, 63, 65, 70, 71);
- re-routed three access roads for turbines 51, 64, and 67;
- repositioned one laydown yard; and
- removed a proposed location for the operation and maintenance building.

More details of these changes are identified in Table 1 below.

Table 1: Project Updates

Infrastructure	Description of Change	Rationale
Turbine 1, access road and collector line.	Turbine 1 has moved 69 metres (m) northwest. The access road and collector line has been modified as a result.	Environmental considerations.
Turbine 47, access road and collector line.	Turbine 47 has moved 623 m west. The access road and collector line has been modified as a result.	Compliance with municipal property line setbacks.
Turbine 48.	Removed.	Compliance with municipal property line setbacks.
Turbine 51, access road.	The access road for turbine 51 is now approaching the turbine from the east.	Environmental considerations.
Turbine 63, access road and collector line.	Turbine 63 has moved 439 m southwest. The access road and collector line has been modified as a result.	Stakeholder feedback.
Turbine 64, access road and collector line.	The access road now approaches the turbine from the east and the collector line has moved further east.	Environmental considerations.
Turbine 65, access road and collector line.	Turbine 65 has moved 325 m southeast. The access road now approaches the turbine from the east and the collector line has moved further northeast.	Environmental considerations.
Turbine 66.	Removed.	Environmental considerations.
Turbine 67, access road.	The access road for turbine 67 has moved east.	Environmental considerations.
Turbine 70, access road and collector line.	Turbine 70 has moved 1103 m southwest. The access road now approaches the turbine from range road 40.	Environmental considerations.
Turbine 71, access road and collector line.	Turbine 71 has moved 163 m east. The access road and collector line has been modified as a result.	Environmental considerations.
Lanfine South Wind Power Project Laydown Yard.	The proposed location of the laydown yard has moved 3806 m east.	Environmental considerations.
Lanfine North Wind Power Project Operations and Maintenance Building	A proposed location for the Operations building has been removed from the Project.	Environmental considerations.

We've also updated the noise impact assessment, visual simulations and shadow flicker report based on the revised layout. Both Lanfine North and Lanfine South comply with the AUC *Rule 012* requirements for noise. We have identified corresponding shadow flicker and noise assessment updates on the maps. Additional visual simulations from locations near the Project are underway and will be available on our website at www.bowark.com shortly.

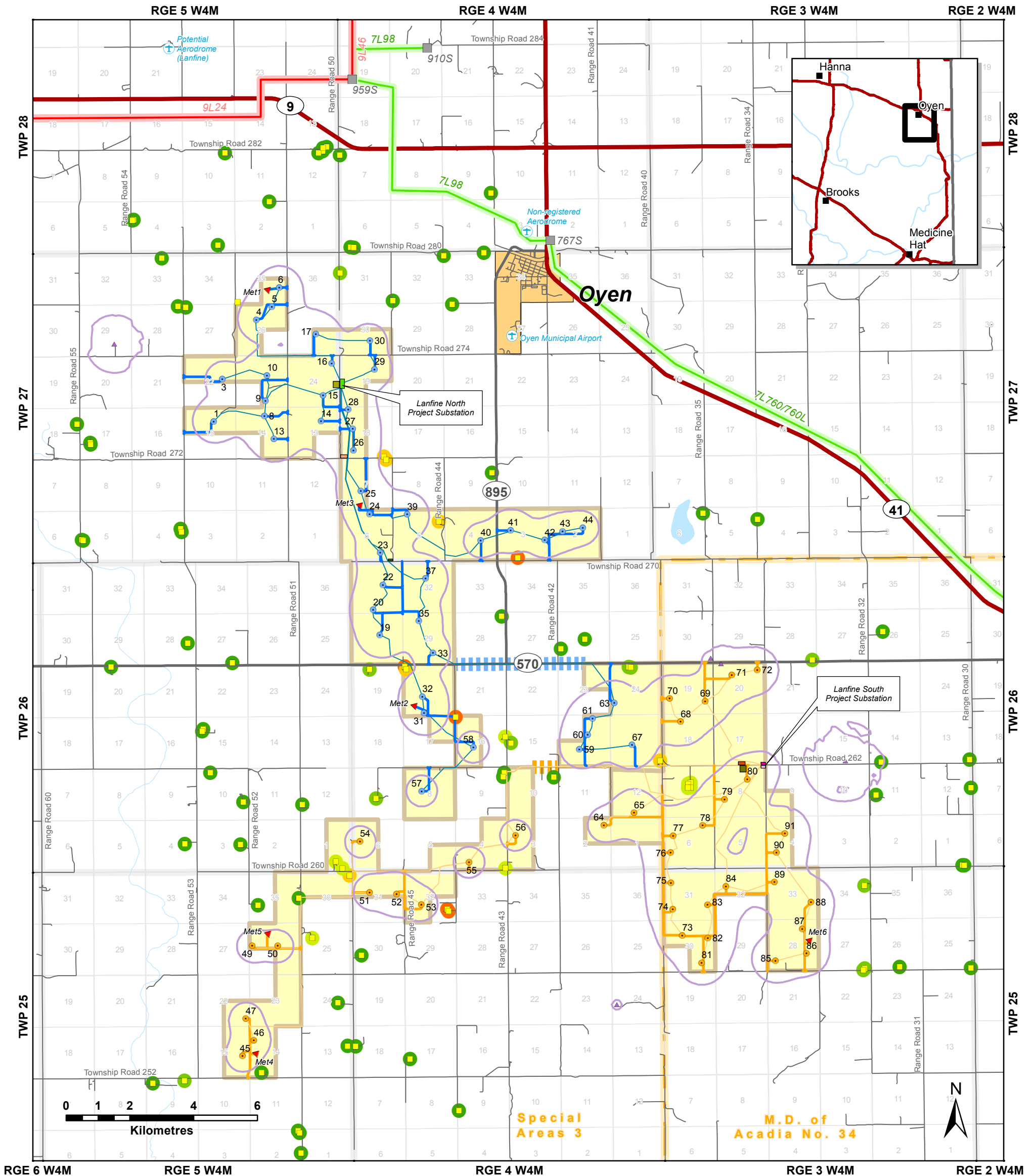
We will continue to engage with the community, landowners, and local government. We will be consulting directly with stakeholders within 800 m of the proposed changes identified in Table 1 above.

BowArk and Pattern will continue working alongside the community to develop this project . Moving forward, Pat Bowes, VP of Development will be your point of contact [(403) 852 4755, pbowes@bowark.com]. You may also contact Mike Stafford at Akoda Land with any questions you may have at 403-808-5199. Alternatively, please contact us toll-free at **1-844-421-2028** or at lanfinewind@bowark.com. Or please visit our website at www.bowark.com.

Kind regards,

A handwritten signature in blue ink, appearing to read "BS", is positioned above the name Brad Sparkes.

Brad Sparkes
President
BowArk Energy Ltd.



**Lanfine North and Lanfine South
Wind Power Projects**

**Proposed Project Map
Vestas**

Date: 11 Dec 2018
Version: 10

Prepared By: WSP Canada Inc.
Author: J. McRae
Reviewed: A. Louro
Approved: R. Istchenko

Notes and Data Sources:
Project Land provided by BowArk. Buildable Area derived by WSP. Turbine layout and proposed infrastructure provided by BowArk. Populated places, roads, Alberta Township System, and municipal boundaries from AltaLIS, licensed under the Open Government Licence – Alberta. Existing transmission lines and substations derived by WSP based on AESO AIES map provided by BowArk. Shadow flicker estimates and sound level contours based on Vestas 3.6 MW turbine with rotor diameter of 136 m and hub height of 105 m using 79 turbine locations. Sound level contours and third-party sound sources provided by RWDI. Airstrips and aerodromes derived by WSP.

Coordinate System: NAD 1983 UTM Zone 12N
Scale: 1:120,000 when printed at 11" x 17"

- Project Land
- Proposed Permanent Meteorological Tower
- Residence
- Existing ATCO Substation
- Existing Transmission Line (240 kV)
- Existing Transmission Line (138 kV)

Lanfine North

- Proposed Turbine Locations
- Proposed Underground Collector Line
- Proposed Road
- Proposed Laydown
- Proposed Batch Plant
- Proposed Collector Right-of-Way (Underground or Above Ground)
- Potential O&M Yard and Building Location
- Proposed Substation

- Major Highway
- Minor Highway
- Road
- City, Town or Village
- Airstrip or Aerodrome
- Municipal District and County Boundary
- Waterbody

Lanfine South

- Proposed Turbine Locations
- Proposed Underground Collector Line
- Proposed Road
- Proposed Laydown
- Proposed Batch Plant
- Proposed Collector Right-of-Way (Underground or Above Ground)
- Proposed Substation
- Potential O&M Yard and Building Location

- Township Line
- Section Line
- Shadow Flicker Hours Per Year (Corrected Case)**
 - 0 hours
 - Between 0 and 4 hours
 - Between 4 and 8 hours
 - Between 8 and 12 hours
 - Between 12 and 16 hours
 - Between 16 and 20 hours
- Third-party Energy Facility Sound Source
- Sound Level (38.3 dBA)

WSP and its affiliates do not make any warranty, either expressed or implied, or assume any legal liability or responsibility for the accuracy, completeness or usefulness of any results or any information contained in this figure and use or reliance thereof. The figure is intended to be used in its entirety and solely for the purpose of this project. No excerpts may be taken to be representative of the findings in the assessment. The use and interpretation of this figure and any other data contained therein to make any investment or acquisition decisions of any nature is solely the responsibility of the client for which WSP will not be liable. The distribution, modification, publication of this figure is not permitted without prior written agreement from WSP, and WSP and its affiliates disclaim all liability for such distribution, modification or publication.







Before



After

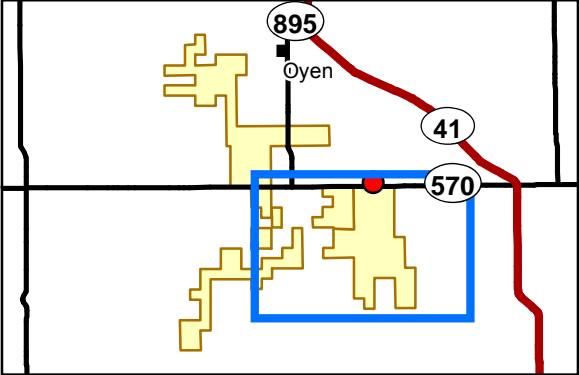
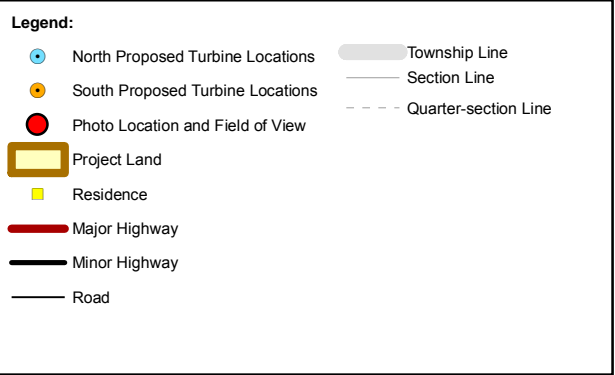
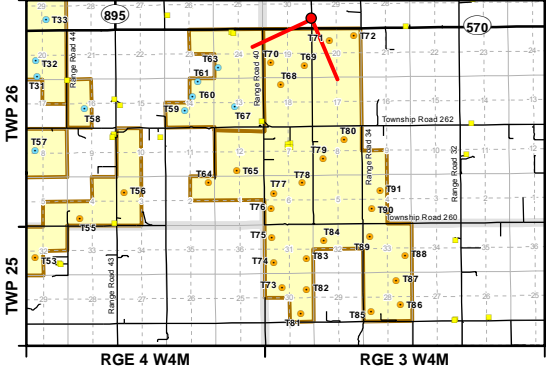
Title: Photomontage: Highway 570	
Project: Lanfine North and Lanfine South Wind Power Projects	
 	Datum: NAD 83 Projection: UTM Zone 12N
	Scale: N.T.S.
	Date: 2018-12-04
	Version: 5

Notes:
Photographs taken with Nikon D60 DSLR camera and 35 mm lens. Panoramic view compiled from five individual photographs. Photomontage simulated using Vestas 3.6 MW turbine with rotor diameter of 136 m and hub height of 105 m using 79 turbine locations (Layout L09 provided by BowArk 29 Nov 2018).

Data Sources:
Project Land provided by BowArk (updated 28 Oct 2017). Populated places, roads, Alberta Township System, and municipal boundaries from AltaLIS, licensed under the Open Government Licence – Alberta.

Prepared By: WSP Canada Inc.
Author: M. Breakey
Reviewed: A. Louro
Approved: R. Istchenko

WSP and its affiliates do not make any warranty, either expressed or implied, or assume any legal liability or responsibility for the accuracy, completeness or usefulness of any results or any information contained in this figure and use or reliance thereof. The figure is intended to be used in its entirety and solely for the purpose of this project. No excerpts may be taken to be representative of the findings in the assessment. The use and interpretation of this figure and any other data contained therein to make any investment or acquisition decisions of any nature is solely the responsibility of the client for which WSP and its affiliates disclaim all liability for such distribution, modification or publication.







Before



After

Title: Photomontage: Oyen	
Project: Lanfine North and Lanfine South Wind Power Projects	
 	Datum: NAD 83 Projection: UTM Zone 12N
	Scale: N.T.S.
	Date: 2018-12-04
	Version: 4

Notes:
Photographs taken with Nikon D60 DSLR camera and 35 mm lens. Panoramic view compiled from four individual photographs. Photomontage simulated using Vestas 3.6 MW turbine with rotor diameter of 136 m and hub height of 105 m using 79 turbine locations (Layout L09 provided by BowArk 29 Nov 2018).

Data Sources:
Project Land provided by BowArk (updated 28 Oct 2017). Populated places, roads, Alberta Township System, and municipal boundaries from AltaLIS, licensed under the Open Government Licence – Alberta.

Prepared By: WSP Canada Inc.
Author: M. Breakey
Reviewed: A. Louro
Approved: R. Istchenko

WSP and its affiliates do not make any warranty, either expressed or implied, or assume any legal liability or responsibility for the accuracy, completeness or usefulness of any results or any information contained in this figure and use or reliance thereof. The figure is intended to be used in its entirety and solely for the purpose of this project. No excerpts may be taken to be representative of the findings in the assessment. The use and interpretation of this figure and any other data contained therein to make any investment or acquisition decisions of any nature is solely the responsibility of the client for which WSP will not be liable. The distribution, modification, publication of this figure is not permitted without prior written agreement from WSP and WSP and its affiliates disclaim all liability for such distribution, modification or publication.

