



Henvey Inlet Wind LP

Henvey Inlet Wind Transmission Line

Appendix B1. Route A Transmission Line EcoLog Eris Report



DATABASE REPORT



Project Property:

*Transmission Line A
Route A
Mowat Township ON*

P.O. Number

Report Type:

Quote - Custom-Build Your Own Report

Order #:

20150428064

Requested by:

AECOM

Date:

May 4, 2015

Ecolog ERIS Ltd.

Environmental Risk Information
Service Ltd. (ERIS)
A division of Glacier Media Inc.
P: 1.866.517.5204
E: info@erisinfo.com

www.erisinfo.com

Table of Contents

Table of Contents.....	1
Executive Summary.....	2
Executive Summary: Report Summary.....	3
Executive Summary: Site Report Summary - Project Property.....	5
Executive Summary: Site Report Summary - Surrounding Properties.....	6
Executive Summary: Summary By Data Source.....	7
Map.....	8
Aerial.....	9
Detail Report.....	10
Unplottable Summary.....	14
Unplottable Report.....	19
Appendix: Database Descriptions.....	40
Definitions.....	50

Notice: IMPORTANT LIMITATIONS and YOUR LIABILITY

Reliance on information in Report: This report DOES NOT replace a full Phase I Environmental Site Assessment but is solely intended to be used as a database review on environmental records.

License for use of information in Report: No page of this report can be used without this cover page, this notice and the project property identifier. The information in Report(s) may not be modified or re-sold.

Your Liability for misuse: Using this Service and/or its reports in a manner contrary to this Notice or your agreement will be in breach of copyright and contract and ERIS may obtain damages for such mis-use, including damages caused to third parties, and gives ERIS the right to terminate your account, rescind your license to any previous reports and to bar you from future use of the Service.

No warranty of Accuracy or Liability for ERIS: The information contained in this report has been produced by EcoLog Environmental Risk Information Services Ltd ("ERIS") using various sources of information, including information provided by Federal and Provincial government departments. The report applies only to the address and up to the date specified on the cover of this report, and any alterations or deviation from this description will require a new report. This report and the data contained herein does not purport to be and does not constitute a guarantee of the accuracy of the information contained herein and does not constitute a legal opinion nor medical advice. Although ERIS has endeavored to present you with information that is accurate, EcoLog ERIS disclaims, any and all liability for any errors, omissions, or inaccuracies in such information and data, whether attributable to inadvertence, negligence or otherwise, and for any consequences arising therefrom. Liability on the part of EcoLog ERIS is limited to the monetary value paid for this report.

Trademark and Copyright: You may not use the ERIS trademarks or attribute any work to ERIS other than as outlined above. This Service and Report(s) are protected by copyright owned by EcoLog ERIS Ltd. Copyright in data used in the Service or Report(s) (the "Data") is owned by EcoLog ERIS or its licensors. The Service, Report(s) and Data may not be copied or reproduced in whole or in any substantial part without prior written consent of EcoLog ERIS.

Executive Summary

Property Information:

Project Property: *Transmission Line A
Route A Mowat Township ON*

P.O. Number:

Order Information:

Order No.: *20150428064*
Date Requested: *05/05/2015*
Requested by: *AECOM*
Report Type: *Quote - Custom-Build Your Own Report*

Additional Products:

Executive Summary: Report Summary

Database	Name	Searched	Project Property	Boundary to 0.25km	Total
AAGR	Abandoned Aggregate Inventory	Y	0	0	0
AGR	Aggregate Inventory	Y	0	0	0
AMIS	Abandoned Mine Information System	Y	0	0	0
ANDR	Anderson's Waste Disposal Sites	Y	0	0	0
AUWR	Automobile Wrecking & Supplies	Y	0	0	0
BORE	Borehole	Y	0	0	0
CA	Certificates of Approval	Y	0	0	0
CFOT	Commercial Fuel Oil Tanks	Y	0	0	0
CHEM	Chemical Register	Y	0	0	0
COAL	Inventory of Coal Gasification Plants and Coal Tar Sites	Y	0	0	0
CONV	Compliance and Convictions	Y	0	0	0
CPU	Certificates of Property Use	Y	0	0	0
DRL	Drill Hole Database	Y	0	0	0
EASR	Environmental Activity and Sector Registry	Y	0	0	0
EBR	Environmental Registry	Y	0	0	0
ECA	Environmental Compliance Approval	Y	0	0	0
EEM	Environmental Effects Monitoring	Y	0	0	0
EHS	ERIS Historical Searches	Y	0	0	0
EIIS	Environmental Issues Inventory System	Y	0	0	0
EXP	List of TSSA Expired Facilities	Y	0	0	0
FCON	Federal Convictions	Y	0	0	0
FCS	Contaminated Sites on Federal Land	Y	0	0	0
FOFT	Fisheries & Oceans Fuel Tanks	Y	0	0	0
FST	Fuel Storage Tank	Y	0	0	0
FSTH	Fuel Storage Tank - Historic	Y	0	0	0
GEN	Ontario Regulation 347 Waste Generators Summary	Y	0	0	0
HINC	TSSA Historic Incidents	Y	0	0	0
IAFT	Indian & Northern Affairs Fuel Tanks	Y	0	0	0
INC	TSSA Incidents	Y	0	0	0
LIMO	Landfill Inventory Management Ontario	Y	0	0	0
MINE	Canadian Mine Locations	Y	0	0	0
MNR	Mineral Occurrences	Y	0	1	1
NATE	National Analysis of Trends in Emergencies System (NATES)	Y	0	0	0
NCPL	Non-Compliance Reports	Y	0	0	0
NDFT	National Defence & Canadian Forces Fuel Tanks	Y	0	0	0
NDSP	National Defence & Canadian Forces Spills	Y	0	0	0
NDWD	National Defence & Canadian Forces Waste Disposal Sites	Y	0	0	0

<i>Database</i>	<i>Name</i>	<i>Searched</i>	<i>Project Property</i>	<i>Boundary to 0.25km</i>	<i>Total</i>
NEES	National Environmental Emergencies System (NEES)	Y	0	0	0
NPCB	National PCB Inventory	Y	0	0	0
NPRI	National Pollutant Release Inventory	Y	0	0	0
OGW	Oil and Gas Wells	Y	0	0	0
OOGW	Ontario Oil and Gas Wells	Y	0	0	0
OPCB	Inventory of PCB Storage Sites	Y	0	0	0
ORD	Orders	Y	0	0	0
PAP	Canadian Pulp and Paper	Y	0	0	0
PCFT	Parks Canada Fuel Storage Tanks	Y	0	0	0
PES	Pesticide Register	Y	0	0	0
PINC	TSSA Pipeline Incidents	Y	0	0	0
PRT	Private and Retail Fuel Storage Tanks	Y	0	0	0
PTTW	Permit to Take Water	Y	0	0	0
REC	Ontario Regulation 347 Waste Receivers Summary	Y	0	0	0
RSC	Record of Site Condition	Y	0	0	0
RST	Retail Fuel Storage Tanks	Y	0	0	0
SCT	Scott's Manufacturing Directory	Y	0	0	0
SPL	Ontario Spills	Y	0	0	0
SRDS	Wastewater Discharger Registration Database	Y	0	0	0
TANK	Anderson's Storage Tanks	Y	0	0	0
TCFT	Transport Canada Fuel Storage Tanks	Y	0	0	0
VAR	TSSA Variances for Abandonment of Underground Storage Tanks	Y	0	0	0
WDS	Waste Disposal Sites - MOE CA Inventory	Y	0	0	0
WDSH	Waste Disposal Sites - MOE 1991 Historical Approval Inventory	Y	0	0	0
WWIS	Water Well Information System	Y	0	8	8
Total:			0	9	9

Executive Summary: Site Report Summary - Project Property

<i>Map Key</i>	<i>DB</i>	<i>Company/Site Name</i>	<i>Address</i>	<i>Dir/Dist m</i>	<i>Elev diff m</i>	<i>Page Number</i>
--------------------	-----------	--------------------------	----------------	-------------------	------------------------	------------------------

No records found in the selected databases for the project property.

Executive Summary: Site Report Summary - Surrounding Properties

<i>Map Key</i>	<i>DB</i>	<i>Company/Site Name</i>	<i>Address</i>	<i>Dir/Dist m</i>	<i>Elev diff m</i>	<i>Page Number</i>
<u>1</u>	WWIS		ON	WSW/223.1	187.06	<u>10</u>
<u>2</u>	WWIS		ON	WSW/206.0	189.36	<u>10</u>
<u>3</u>	WWIS		ON	WSW/242.5	184.19	<u>10</u>
<u>4</u>	WWIS		ON	WSW/51.2	205.67	<u>11</u>
<u>5</u>	WWIS		ON	WSW/4.6	202.68	<u>11</u>
<u>5</u>	WWIS		ON	WSW/4.6	202.68	<u>11</u>
<u>5</u>	WWIS		ON	WSW/4.6	202.68	<u>12</u>
<u>5</u>	WWIS		ON	WSW/4.6	202.68	<u>12</u>
<u>6</u>	MNR	Unknown	ON	WSW/73.1	199.80	<u>12</u>

Executive Summary: Summary By Data Source

MNR - Mineral Occurrences

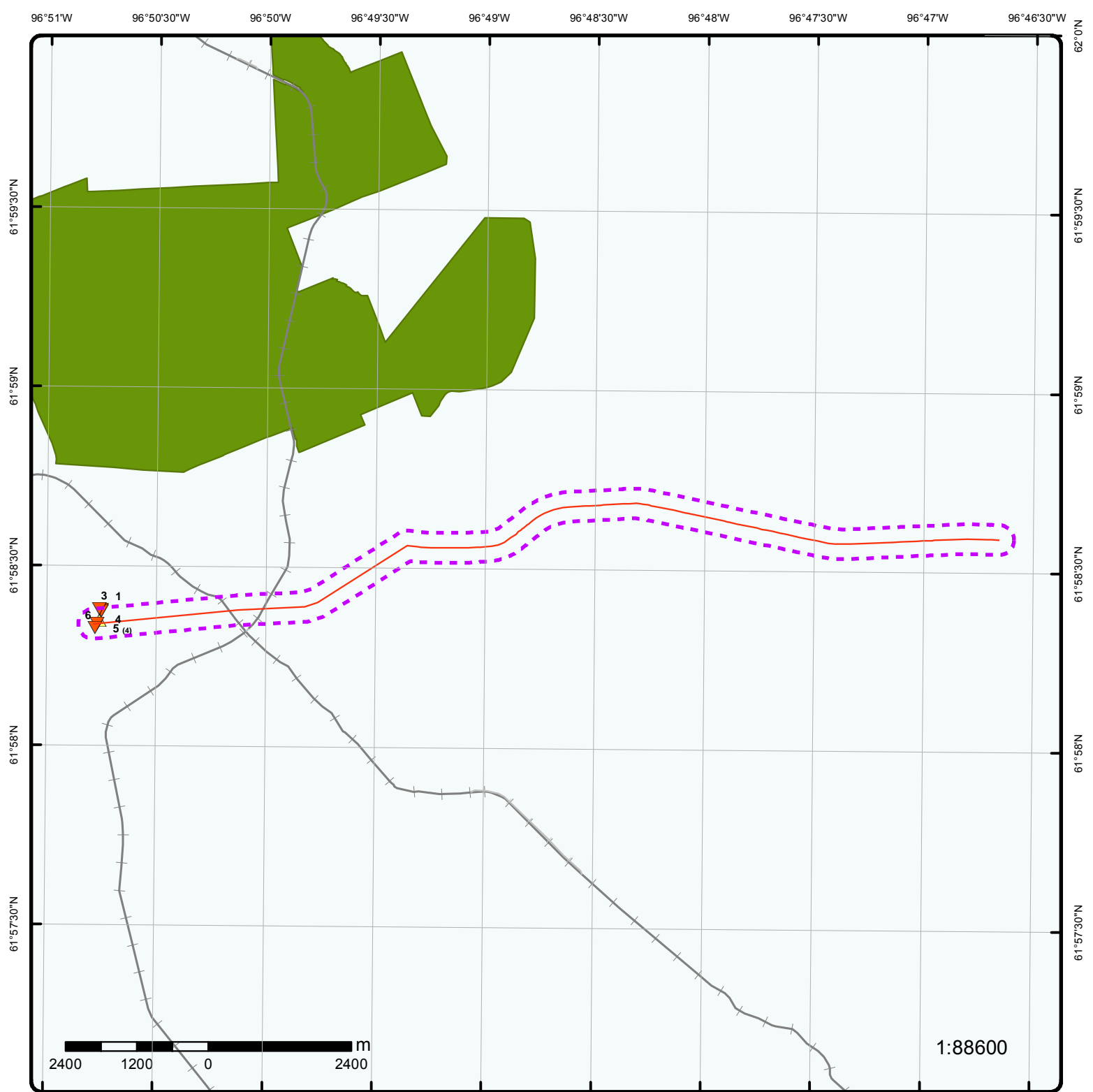
A search of the MNR database, dated 1846-Apr 2013 has found that there are 1 MNR site(s) within approximately 0.25 kilometers of the project property.

<u>Site</u>	<u>Address</u>	<u>Distance m</u>	<u>Map Key</u>
Unknown	ON	73.1	<u>6</u>

WWIS - Water Well Information System

A search of the WWIS database, dated 1955-Mar 2014 has found that there are 8 WWIS site(s) within approximately 0.25 kilometers of the project property.

<u>Site</u>	<u>Address</u>	<u>Distance m</u>	<u>Map Key</u>
	ON	223.1	<u>1</u>
	ON	206.0	<u>2</u>
	ON	242.5	<u>3</u>
	ON	51.2	<u>4</u>
	ON	4.6	<u>5</u>
	ON	4.6	<u>5</u>
	ON	4.6	<u>5</u>
	ON	4.6	<u>5</u>



Map Order No: 20150428064

Address: Route A, Mowat Township, ON

- | | | |
|-------------------------------------|-----------------------------------|--------------------------------|
| — Project Property | Industrial and Resource - Regions | National Park |
| — Buffer Outline | Main Line | Provincial or Territorial Park |
| ▲ Eris Sites with Higher Elevation | Sidetrack | Other Park |
| ■ Eris Sites with Same Elevation | Transit Line | Golf Course or Driving Range |
| ▼ Eris Sites with Lower Elevation | Abandoned Line | Park or Sports Field |
| ○ Eris Sites with Unknown Elevation | | Other Recreation Area |

80°33'W

80°31'30"W

80°30'W

80°28'30"W

80°27'W

80°25'30"W

80°24'W

80°22'30"W

45°58'30"N

45°57'N

45°55'30"N

45°54'N

45°52'30"N

45°51'N

45°49'30"N

45°58'30"N

45°57'N

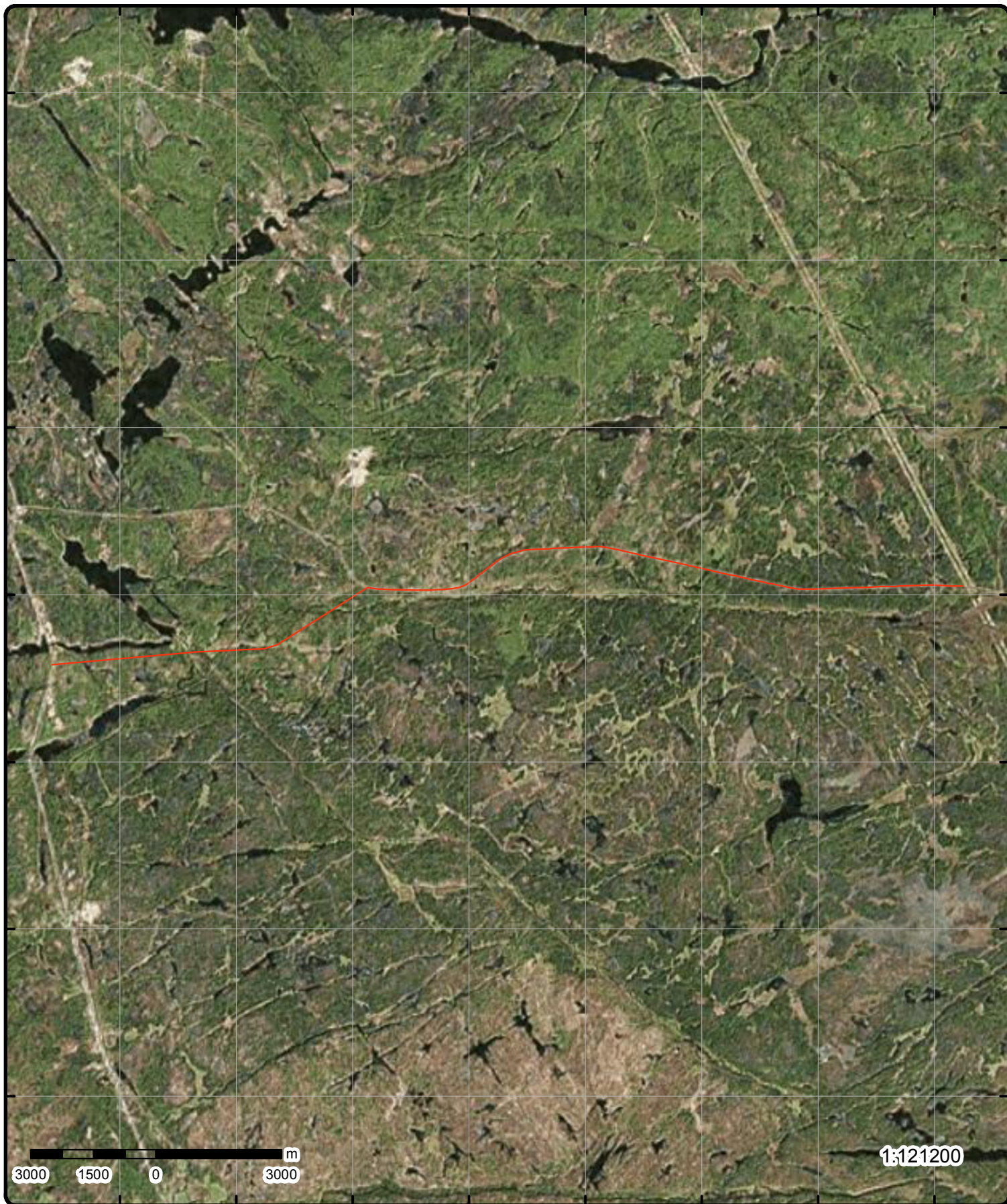
45°55'30"N

45°54'N

45°52'30"N

45°51'N

45°49'30"N



Aerial

Order No: 20150428064

Address: Route A, Mowat Township, ON

Source: ESRI World Imagery, Updated October 2014

© Ecolog ERIS Ltd

Detail Report

Map Key	Number of Records	Direction/ Distance m	Elevation m	Site	DB
1	1 of 1	WSW/223.1	187.1	ON	WWIS
Well ID: 7211947 Concession: County: PARRY SOUND Easting Nad83: 533902 Zone: 17 Primary Water Use: Sec. Water Use: Pump Rate: Flow Rate: Specific Capacity: Construction Method: Elevation (m): Depth to Bedrock: Water Type:		Lot: Concession Name: Municipality: INDIAN RESERVE HENVEY INLET 2 Northing Nad83: 5082108 Utm Reliability: margin of error : 30 m - 100 m Construction Date: 26-SEP-13 Well Depth: Static Water Level: Clear/Cloudy: Final Well Status: Flowing (y/n): Elevation Reliability: Overburden/Bedrock: Casing Material:			
2	1 of 1	WSW/206.0	189.4	ON	WWIS
Well ID: 7211946 Concession: County: PARRY SOUND Easting Nad83: 533904 Zone: 17 Primary Water Use: Sec. Water Use: Pump Rate: Flow Rate: Specific Capacity: Construction Method: Elevation (m): Depth to Bedrock: Water Type:		Lot: Concession Name: Municipality: INDIAN RESERVE HENVEY INLET 2 Northing Nad83: 5082091 Utm Reliability: margin of error : 30 m - 100 m Construction Date: 27-SEP-13 Well Depth: Static Water Level: Clear/Cloudy: Final Well Status: Flowing (y/n): Elevation Reliability: Overburden/Bedrock: Casing Material:			
3	1 of 1	WSW/242.5	184.2	ON	WWIS
Well ID: 4803022 Concession: County: PARRY SOUND Easting Nad83: 533865.6 Zone: 17 Primary Water Use: Domestic Sec. Water Use: Pump Rate: 2 GPM Flow Rate: Specific Capacity:		Lot: Concession Name: Municipality: INDIAN RESERVE HENVEY INLET 2 Northing Nad83: 5082124 Utm Reliability: margin of error : 100 m - 300 m Construction Date: 21-JUL-77 Well Depth: 78 ft Static Water Level: 10 ft Clear/Cloudy: CLEAR Final Well Status: Water Supply			

4	1 of 1	WSW/51.2	205.7	ON	WWIS
<i>Well ID:</i>	7212025			<i>Lot:</i>	
<i>Concession:</i>				<i>Concession Name:</i>	
<i>County:</i>	PARRY SOUND			<i>Municipality:</i>	INDIAN RESERVE HENVEY INLET 2
<i>Easting Nad83:</i>	533867			<i>Northing Nad83:</i>	5081932
<i>Zone:</i>	17			<i>Utm Reliability:</i>	margin of error : 30 m - 100 m
<i>Primary Water Use:</i>				<i>Construction Date:</i>	30-OCT-13
<i>Sec. Water Use:</i>				<i>Well Depth:</i>	
<i>Pump Rate:</i>				<i>Static Water Level:</i>	
<i>Flow Rate:</i>				<i>Clear/Cloudy:</i>	
<i>Specific Capacity:</i>				<i>Final Well Status:</i>	
<i>Construction Method:</i>				<i>Flowing (y/n):</i>	
<i>Elevation (m):</i>				<i>Elevation Reliability:</i>	
<i>Depth to Bedrock:</i>				<i>Overburden/Bedrock:</i>	
<i>Water Type:</i>				<i>Casing Material:</i>	

<u>5</u>	2 of 4	WSW/4.6	202.7	ON	WWIS
Well ID:	7213418	Lot:			
Concession:		Concession Name:			
County:	PARRY SOUND	Municipality:	INDIAN RESERVE HENVEY INLET 2		
Easting Nad83:	533835	Northing Nad83:	5081873		
Zone:	17	Utm Reliability:	margin of error : 30 m - 100 m		

Map Key	Number of Records	Direction/ Distance m	Elevation m	Site	DB
Primary Water Use: Sec. Water Use: Pump Rate: Flow Rate: Specific Capacity: Construction Method: Elevation (m): Depth to Bedrock: Water Type:				Construction Date: 04-OCT-13 Well Depth: Static Water Level: Clear/Cloudy: Final Well Status: Flowing (y/n): Elevation Reliability: Overburden/Bedrock: Casing Material:	
5	3 of 4	WSW/4.6	202.7	ON	WWIS
Well ID: 7213417 Concession: County: PARRY SOUND Easting Nad83: 533835 Zone: 17 Primary Water Use: Sec. Water Use: Pump Rate: Flow Rate: Specific Capacity: Construction Method: Elevation (m): Depth to Bedrock: Water Type:				Lot: Concession Name: Municipality: INDIAN RESERVE HENVEY INLET 2 Northing Nad83: 5081873 Utm Reliability: margin of error : 30 m - 100 m Construction Date: 23-OCT-13 Well Depth: Static Water Level: Clear/Cloudy: Final Well Status: Flowing (y/n): Elevation Reliability: Overburden/Bedrock: Casing Material:	
5	4 of 4	WSW/4.6	202.7	ON	WWIS
Well ID: 7213416 Concession: County: PARRY SOUND Easting Nad83: 533835 Zone: 17 Primary Water Use: Sec. Water Use: Pump Rate: Flow Rate: Specific Capacity: Construction Method: Elevation (m): Depth to Bedrock: Water Type:				Lot: Concession Name: Municipality: INDIAN RESERVE HENVEY INLET 2 Northing Nad83: 5081873 Utm Reliability: margin of error : 30 m - 100 m Construction Date: 24-OCT-13 Well Depth: Static Water Level: Clear/Cloudy: Final Well Status: Flowing (y/n): Elevation Reliability: Overburden/Bedrock: Casing Material:	
6	1 of 1	WSW/73.1	199.8	Unknown ON	MNR
Easting: 533799.25 Northing: 5081803.58 Zone: 17 MDI No: MDI41H15NE00003 Deposit Status: PAST PRODUCING MINE WITHOUT RESERVES Mining Division: Geological District: SUDBURY					

Map Key	Number of Records	Direction/ Distance m	Elevation m	Site	DB
<hr/>					
Claim Map:		N/A			
Access Description:		N/A			
--- Details ---					
Year:		9999			
Name:		Unknown			
Twp/Area:		HENVEY			
Con/Lot/Sec:		LOT: NA CON: NA			
Commodity:		GNEISS			
Deposit Characteristic:					

Unplottable Summary

DB	Company Name/Site Name	Address	City	Postal
EHS		Hwy 69	Henvey Inlet No. 2 ON	
EHS		Hwy 69	Parry Sound Area ON	
EHS		Highway 69	Parry Sound ON	
EHS		Hwy 69	Parry Sound Area ON	
EHS		Hwy 69	Killarny/French River ON	
EHS		Hwy 69	Parry Sound ON	
EHS		Hwy 69	Henvey Inlet No. 2 ON	
EXP	TEXACO CANADA LTD	PRT LOT 139 CON B HWY 69	PARRY SOUND ON	
EXP	NOBEL PETROLEUM O/A GAS STN	LOT 5 CON A HWY 69 N RR 3	PARRY SOUND ON	
EXP	NOBEL PETROLEUM O/A GAS STN	LOT 5 CON A HWY 69 N RR 3	PARRY SOUND ON	
EXP	NOBEL PETROLEUM O/A GAS STN	LOT 5 CON A HWY 69 N RR 3	PARRY SOUND ON	
EXP	NOBEL PETROLEUM O/A GAS STN	LOT 5 CON A HWY 69 N RR 3	PARRY SOUND ON	
EXP	NOBEL PETROLEUM O/A GAS STN	LOT 5 CON A HWY 69 N RR 3	PARRY SOUND ON	
EXP	NOBEL PETROLEUM O/A GAS STN	LOT 5 CON A HWY 69 N RR 3	PARRY SOUND ON	
EXP	NOBEL PETROLEUM O/A GAS STN	LOT 5 CON A HWY 69 N RR 3	PARRY SOUND ON	
EXP	NOBEL PETROLEUM O/A GAS STN	LOT 5 CON A HWY 69 NRR 3	PARRY SOUND ON	
EXP	NOBEL PETROLEUM O/A GAS STN	LOT 5 CON A HWY 69 NRR 3	PARRY SOUND ON	
EXP	NOBEL PETROLEUM O/A	LOT 5 CON A HWY 69 NRR 3	PARRY SOUND ON	

	GAS STN		
EXP	NOBEL PETROLEUM O/A GAS STN	LOT 5 CON A HWY 69 NRR 3	PARRY SOUND ON
FST	NORTH STAR MOTEL & GAS BAR	RR 2 HWY 69	PARRY SOUND ON
FST	NORTH STAR MOTEL & GAS BAR	RR 2 HWY 69	PARRY SOUND ON
FST	NORTH STAR MOTEL & GAS BAR	RR 2 HWY 69	PARRY SOUND ON
FSTH	NOBEL PETROLEUM O/A GAS STN	LOT 5 CON A HWY 69 N	PARRY SOUND ON
FSTH	NOBEL PETROLEUM O/A GAS STN	LOT 5 CON A HWY 69 N	PARRY SOUND ON
GEN	PARRY SOUND READY MIX LTD.	PT. LOT 141, CONC. B	PARRY SOUND ON
GEN	PARRY SOUND READY MIX LIMITED	PART LOT 141, CONCESSION B	PARRY SOUND ON
GEN	BOT CONSTRUCTION (OUT OF BUSINESS)05-791	N. SIDE OF HWY. 124, 500FT W OF HWY 69N	OAKVILLE ON
LIMO	The Corporation of the Municipality of Killarney	West side of Highway 69, North of Key River	Killarney ON
PRT	SHELL GAS BAR	PRT LOT 18 CON A HWY 69	PARRY SOUND ON
PRT	ALVES MOTORS LTD	HWY 69 RR 2 LOT 112 CON B FOLEY TWP	PARRY SOUND ON
PRT	STILL RIVER TRUCK STOP	LOT 5 CON 6 RR 1 HWY 69	HENVEY TWP ON
PRT	HUNTERS GAS BAR TEXACO	PRT LOT 139 CON B HWY 69	PARRY SOUND ON
PRT	LEVERNE SHURR	LOT 6 CON A HWY 69 N	PARRY SOUND ON
PRT	972440 ONTARIO INC NORTHWAY TRUCK STOP	HWY 69 RR 2	PARRY SOUND ON
PRT	SMITH MARINE	LOT 27 CON 23 HWY 69 MOWAT	PARRY SOUND ON
SCT	PARRY SOUND READY-MIX LTD.	HWY 69	PARRY SOUND ON
SCT	JAMOT LUMBER CO LTD	HWY 522	PAKESLEY ON
SPL	Light Speed<UNOFFICIAL>	Hwy 69. South of Still River	Parry Sound ON

SPL	1389149 Ontario Inc.	Hwy 69, 40 miles north of Parry Sound in Still River	Parry Sound ON
SPL	Trappers Transport Ltd.	Hwy 69, 3km N of Magnetewan Reserve, Britt	Parry Sound ON
SPL	Manitoulin Transport Inc.	Hwy 69, 15 km south of Point Au Baril, north of Parry Sound	Parry Sound ON
SPL	Harmac Transportation Inc.	Hwy 69	Parry Sound ON
SPL	Challenger Motor Freight Inc.	HWY 69 Southbound, 1KM south of Woods Rd (15KM N of Parry Sound)	Parry Sound ON
SPL	Wilson Transport<UNOFFICIAL>	H'way 69 S/B between Still River and H'way 526	Henvey ON
SPL	TRANSPROVINCIAL FREIGHT	HWY # 69 NORTHBOUND, APPROX 10 MILES NORTH OF POINTE AU BARIL.	PARRY SOUND DISTRICT ON
SPL	PRIVATE OWNER	WALLBRIDGE TOWNSHIP HWY 69 AT NAISCOOT RIVER BRIDGE.	PARRY SOUND DISTRICT ON
SPL	PRIVATE OWNER	SEGUIN RIVER AT MILL LAKE(AT HWY # 69 BRIDGE).	PARRY SOUND TOWN ON
SPL	ICG PROPANE	POINTE AU BARIL HAMLET ON HWY 69	PARRY SOUND DISTRICT ON
SPL	J & M TRUCKING & EXCAVATING	ON HWY #69 BETWEEN KEY RIVER & STILL RIVER OPP DETACHMENT, HENVEY TWP	PARRY SOUND DISTRICT ON
SPL	TRANSPORT TRUCK	MVA, HIGHWAY 69 AT THE GORDON BAY MARINA	PARRY SOUND TOWN ON
SPL	PRIVATE OWNER	MACDONALDS PARKING LOT AT HWY 69.	PARRY SOUND TOWN ON
SPL	ONTARIO HYDRO	LOT 26, CONC 7, HARRISON TWP. CORNER OF HWY # 69/STURGEON BAY RD.	PARRY SOUND DISTRICT ON
SPL	VOYAGEUR	JUST OFF HWY 69 AT GEORGE HUNT MEMORIAL DRIVE - MACDOUGALL	PARRY SOUND DISTRICT ON
SPL	PIN TO PIN Express Inc.	HWY. 69 S., 2 KM. S. OF ALBAN	Killarney ON
SPL	AUTO HAULAWAY (1981) LTD.	HWY 69,6 KM NORTH OF NOBEL	PARRY SOUND DISTRICT ON
SPL	ALLIED VAN LINES	HWY 69, WALLBRIDGE TWP.	PARRY SOUND DISTRICT ON
SPL	REIMER EXPRESS LINES LTD.	HWY 69, OPPOSITE BOUCHER REAL ESTATE	PARRY SOUND TOWN ON
SPL	TRANSPORT TRUCK	HWY 69 N/B, 1 MILE NORTH OF BOWES STREET.	PARRY SOUND TOWN ON

SPL	UNKNOWN	HWY 69 JUST NORTH OF PARRY SOUND	PARRY SOUND DISTRICT ON
SPL	PRIVATE BUSINESS	HWY 69 BRITT, LONG BRANCH MOTEL	PARRY SOUND DISTRICT ON
SPL	MANITOULIN TRANSPORT	HWY 69 AT LAKE JOSEPH.	PARRY SOUND DISTRICT ON
SPL	Manitoulin Transport Inc. (New Liskeard)	HWY 69 , 1 KM SOUTH OF STILL RIVER<UNOFFICIAL>	Henvey ON
SPL	WEEKS CONSTRUCTION LTD	HWY 69	PARRY SOUND DISTRICT ON
SPL	B & K TRUCKING	HWY 69	PARRY SOUND DISTRICT ON
SPL	SHERWAY TRANSPORT	HWY #69 NEAR HENVEY TWP	PARRY SOUND TOWN ON
SPL	TRANS-PROVINCIAL FREIGHT CARRI	HIGHWAY 69, HENVEY TOWNSHIP STILL RIVER TRUCK STOP	PARRY SOUND DISTRICT ON
SPL	PRIVATE OWNER	HIGHWAY 69	PARRY SOUND TOWN ON
SPL	ESSO PETROLEUM CANADA	HIGHWAY 69	PARRY SOUND TOWN ON
SPL	TRANSPORT TRUCK	HENVEY TWP. BRITT, STILL R. AREA ON HWY 69	PARRY SOUND DISTRICT ON
SPL	PENNY AND CASSON CONTRACTORS	ESSO SERVICE STATION #88001966 ON HWY 69 AT NOBEL	PARRY SOUND ON
SPL	MANITOULIN TRANSPORT	ALONG HWY. 69 FROM BRITT TO POINTE AU BARIL	PARRY SOUND DISTRICT ON
SPL	TANK TRUCKLINES	45 MI. S OF SUDBURY ON HWY 69, N OF PICKEREL BRIDGE., MOWAT TWP	PARRY SOUND DISTRICT ON
SPL	TRANSPORT TRUCK	HWY. 522 JUST NORTH OF PARRY SOUND	PARRY SOUND TOWN ON
SPL	NEAR NORTH DISTRICT SCHOOL BOA	ARGYLE PUBLIC SCHOOL, HIGHWAY 522 BOX 1, PORT LORING	PARRY SOUND ON
SPL	S.21	911 # IS 12077 HWY 522 IN LORING<UNOFFICIAL>	Parry Sound ON
SPL		On Hwy. #69 - Crosses over Seguin River where northbound lanes decrease from 4 t	Parry Sound ON
WDS	The Corporation of the Municipality of Killarney	West Side of Hwy.69, north of Key River	Killarney ON
WWIS			E. OF KEY RIVER ON

Unplottable Report

Site:**Hwy 69 Henvey Inlet No. 2 ON****Database:****EHS**

Order No.: 20041112012
Report Date: 11/22/04
Report Type: Custom Report
Search Radius (km): 0.25
Addit. Info Ordered:

Site:**Hwy 69 Parry Sound Area ON****Database:****EHS**

Order No.: 20061208011
Report Date: 12/19/2006
Report Type: Custom Report
Search Radius (km): 1
Addit. Info Ordered:

Site:**Highway 69 Parry Sound ON****Database:****EHS**

Order No.: 20071026042
Report Date: 11/6/2007
Report Type: CAN - Custom Report
Search Radius (km): 0.5
Addit. Info Ordered:

Site:**Hwy 69 Parry Sound Area ON****Database:****EHS**

Order No.: 20061208010
Report Date: 12/19/2006
Report Type: Custom Report
Search Radius (km): 1
Addit. Info Ordered:

Site:**Hwy 69 Killarny/French River ON****Database:****EHS**

Order No.: 20070111016
Report Date: 1/22/2007
Report Type: CAN - Custom Report
Search Radius (km): 1
Addit. Info Ordered:

Site:**Hwy 69 Parry Sound ON****Database:**
EHS

Order No.: 20130401007
Report Date: 09-APR-13
Report Type: Custom Report
Search Radius (km): .001
Addit. Info Ordered:

Site:**Hwy 69 Henvey Inlet No. 2 ON****Database:**
EHS

Order No.: 20050105029
Report Date: 1/5/2005
Report Type: Custom Report
Search Radius (km): 0.25
Addit. Info Ordered:

Site: **TEXACO CANADA LTD****PRT LOT 139 CON B HWY 69 PARRY SOUND ON****Database:**
EXP

Instance ID:
TSSA Program Area:
Maximum Hazard Rank:
Instance Number: 9721902
Instance Type: FS Facility
Status: EXPIRED
Description:

Site: **NOBEL PETROLEUM O/A GAS STN****LOT 5 CON A HWY 69 N RR 3 PARRY SOUND ON****Database:**
EXP

Instance ID:
TSSA Program Area:
Maximum Hazard Rank:
Instance Number: 10877512
Instance Type: FS Liquid Fuel Tank
Status: EXPIRED
Description:

Site: **NOBEL PETROLEUM O/A GAS STN****LOT 5 CON A HWY 69 N RR 3 PARRY SOUND ON****Database:**
EXP

Instance ID: 80972
TSSA Program Area:
Maximum Hazard Rank:
Instance Number: 11370632
Instance Type: FS Piping
Status: EXPIRED
Description: FS Piping

Site: **NOBEL PETROLEUM O/A GAS STN****LOT 5 CON A HWY 69 N RR 3 PARRY SOUND ON****Database:**
EXP

Instance ID:

TSSA Program Area:
Maximum Hazard Rank:
Instance Number: 11370692
Instance Type: FS Liquid Fuel Tank
Status: EXPIRED
Description:

Site: NOBEL PETROLEUM O/A GAS STN
LOT 5 CON A HWY 69 N RR 3 PARRY SOUND ON

Database:
EXP

Instance ID:
TSSA Program Area:
Maximum Hazard Rank:
Instance Number: 11370675
Instance Type: FS Liquid Fuel Tank
Status: EXPIRED
Description:

Site: NOBEL PETROLEUM O/A GAS STN
LOT 5 CON A HWY 69 N RR 3 PARRY SOUND ON

Database:
EXP

Instance ID:
TSSA Program Area:
Maximum Hazard Rank:
Instance Number: 11370656
Instance Type: FS Liquid Fuel Tank
Status: EXPIRED
Description:

Site: NOBEL PETROLEUM O/A GAS STN
LOT 5 CON A HWY 69 N RR 3 PARRY SOUND ON

Database:
EXP

Instance ID: 80881
TSSA Program Area:
Maximum Hazard Rank:
Instance Number: 11370709
Instance Type: FS Piping
Status: EXPIRED
Description: FS Piping

Site: NOBEL PETROLEUM O/A GAS STN
LOT 5 CON A HWY 69 N RR 3 PARRY SOUND ON

Database:
EXP

Instance ID:
TSSA Program Area:
Maximum Hazard Rank:
Instance Number: 9827959
Instance Type: FS Facility
Status: EXPIRED
Description:

Site: NOBEL PETROLEUM O/A GAS STN
LOT 5 CON A HWY 69 NRR 3 PARRY SOUND ON

Database:
EXP

Instance ID: 80478

TSSA Program Area:
Maximum Hazard Rank:
Instance Number: 11370656
Instance Type: FS Liquid Fuel Tank
Status: EXPIRED
Description: FS Gasoline Station - Self Serve

Site: NOBEL PETROLEUM O/A GAS STN
LOT 5 CON A HWY 69 NRR 3 PARRY SOUND ON

Database:
EXP

Instance ID: 81152
TSSA Program Area:
Maximum Hazard Rank:
Instance Number: 11370675
Instance Type: FS Liquid Fuel Tank
Status: EXPIRED
Description: FS Gasoline Station - Self Serve

Site: NOBEL PETROLEUM O/A GAS STN
LOT 5 CON A HWY 69 NRR 3 PARRY SOUND ON

Database:
EXP

Instance ID: 48673
TSSA Program Area:
Maximum Hazard Rank:
Instance Number: 10877512
Instance Type: FS Liquid Fuel Tank
Status: EXPIRED
Description: FS Gasoline Station - Self Serve

Site: NOBEL PETROLEUM O/A GAS STN
LOT 5 CON A HWY 69 NRR 3 PARRY SOUND ON

Database:
EXP

Instance ID: 81226
TSSA Program Area:
Maximum Hazard Rank:
Instance Number: 11370692
Instance Type: FS Liquid Fuel Tank
Status: EXPIRED
Description: FS Gasoline Station - Self Serve

Site: NORTH STAR MOTEL & GAS BAR
RR 2 HWY 69 PARRY SOUND ON

Database:
FST

Instance Number: 10753947
Cont Name:
Instance Type: FS Liquid Fuel Tank
Fuel Type: Gasoline
Status: Active
Capacity: 13600
Tank Material: Steel
Corrosion Protection: Sacrificial anode
Tank Type: Single Wall UST
Install Year: 1981
Parent Facility Type: FS Gasoline Station - Full Serve
Facility Type: FS Liquid Fuel Tank

Site: NORTH STAR MOTEL & GAS BAR
RR 2 HWY 69 PARRY SOUND ON

Database:
FST

Instance Number: 10753931
Cont Name:
Instance Type: FS Liquid Fuel Tank
Fuel Type: Gasoline
Status: Active
Capacity: 36000
Tank Material: Fiberglass (FRP)
Corrosion Protection: Fiberglass
Tank Type: Single Wall UST
Install Year: 1989
Parent Facility Type: FS Gasoline Station - Full Serve
Facility Type: FS Liquid Fuel Tank

Site: NORTH STAR MOTEL & GAS BAR
RR 2 HWY 69 PARRY SOUND ON

Database:
FST

Instance Number: 10753962
Cont Name:
Instance Type: FS Liquid Fuel Tank
Fuel Type: Gasoline
Status: Active
Capacity: 13600
Tank Material: Steel
Corrosion Protection: Sacrificial anode
Tank Type: Single Wall UST
Install Year: 1981
Parent Facility Type: FS Gasoline Station - Full Serve
Facility Type: FS Liquid Fuel Tank

Site: NOBEL PETROLEUM O/A GAS STN
LOT 5 CON A HWY 69 N PARRY SOUND ON

Database:
FSTH

License Issue Date: 10/10/2006
Tank Status: Licensed
Tank Status As Of: August 2007
Operation Type: Retail Fuel Outlet
Facility Type: Gasoline Station - Self Serve

--- Details ---

Status: Active
Capacity (L): 22700
Year of Installation: 1992
Corrosion Protection:
Tank Fuel Type: Liquid Fuel Single Wall UST - Gasoline
+
Status: Active
Capacity (L): 50000
Year of Installation: 1992
Corrosion Protection:
Tank Fuel Type: Liquid Fuel Single Wall UST - Gasoline
+
Status: Active
Capacity (L): 50000
Year of Installation: 1992
Corrosion Protection:

Tank Fuel Type: Liquid Fuel Single Wall UST - Gasoline
+
Status: Active
Capacity (L): 22700
Year of Installation: 1992
Corrosion Protection:
Tank Fuel Type: Liquid Fuel Single Wall UST - Gasoline

Site: NOBEL PETROLEUM O/A GAS STN
LOT 5 CON A HWY 69 N PARRY SOUND ON

Database:
FSTH

License Issue Date: 10/10/2006 12:00:00 PM
Tank Status: Licensed
Tank Status As Of: December 2008
Operation Type: Retail Fuel Outlet
Facility Type: Gasoline Station - Self Serve

--- Details ---

Status: Active
Capacity (L): 22700
Year of Installation: 1992
Corrosion Protection:
Tank Fuel Type: Liquid Fuel Single Wall UST - Gasoline
+
Status: Active
Capacity (L): 50000
Year of Installation: 1992
Corrosion Protection:
Tank Fuel Type: Liquid Fuel Single Wall UST - Gasoline
+
Status: Active
Capacity (L): 50000
Year of Installation: 1992
Corrosion Protection:
Tank Fuel Type: Liquid Fuel Single Wall UST - Gasoline
+
Status: Active
Capacity (L): 22700
Year of Installation: 1992
Corrosion Protection:
Tank Fuel Type: Liquid Fuel Single Wall UST - Gasoline

Site: PARRY SOUND READY MIX LTD.
PT. LOT 141, CONC. B PARRY SOUND ON

Database:
GEN

Generator #: ON1147800
Approval Yrs: 92,93,97,98
SIC Code: 4121
SIC Description: HIGHWAYS, STR., ETC.

--- Details ---

Waste Code: 252
Waste Description: WASTE OILS & LUBRICANTS

Site: PARRY SOUND READY MIX LIMITED
PART LOT 141, CONCESSION B PARRY SOUND ON

Database:
GEN

Generator #: ON1147800
Approval Yrs: 99,00,01
SIC Code: 4121
SIC Description: HIGHWAYS, STR., ETC.

--- Details ---

Waste Code: 252
Waste Description: WASTE OILS & LUBRICANTS

Site: **BOT CONSTRUCTION (OUT OF BUSINESS)05-791**
N. SIDE OF HWY. 124, 500FT W OF HWY 69N OAKVILLE ON

Database:
GEN

Generator #: ON0652210
Approval Yrs: 92,93,94,95,96,97,98
SIC Code: 4121
SIC Description: HIGHWAYS, STR., ETC.

--- Details ---

Waste Code: 252
Waste Description: WASTE OILS & LUBRICANTS

Site: **The Corporation of the Municipality of Killarney**
West side of Highway 69, North of Key River Killarney ON

Database:
LIMO

C of A Number: A7108301
Operation Status: Open
C of A Issue Date:
Site Name: Key River Landfill
MOE Region:
MOE District:
C of A Issued to:
Landfill Type:
Site County:
Total Site Area:
Footprint:
Total Approved Capac:
Fill Rate:
Contam. Atten. Zone:
Air Emmis. Monitor:
Groundwater Monitor:
Surf. Water Monitor:
Landfill Gas Monitor:
Natural Attenuation:
Liners:
Cover Material:
Leachate Off Site:
Leachate On Site:
Landfill Gas Manag.(P):
Landfill Gas Manag.(F):
Landfill Gas Manag.(E):
Financial Assurance:
Req Coll. Landfill Gas:
Landfill Gas Collected:
Est Remain Capac(ERC):
ERC Date Last Determ.:
ERC Methodology:
Total Waste Rec.(TWR):
TWR Methodology:
Last Reporting Year:

Site: **SHELL GAS BAR**
PRT LOT 18 CON A HWY 69 PARRY SOUND ON

Database:
PRT

Location ID: 11374

Type: retail
Expiry Date: 1991-12-31
Capacity (L): 0
Licence #: 0023882001

Site: ALVES MOTORS LTD
HWY 69 RR 2 LOT 112 CON B FOLEY TWP PARRY SOUND ON

Database:
PRT

Location ID: 11361
Type: retail
Expiry Date: 1996-01-31
Capacity (L): 0
Licence #: 0010231001

Site: STILL RIVER TRUCK STOP
LOT 5 CON 6 RR 1 HWY 69 HENVEY TWP ON

Database:
PRT

Location ID: 20077
Type: retail
Expiry Date: 1995-09-30
Capacity (L): 37700
Licence #: 0076362136

Site: HUNTERS GAS BAR TEXACO
PRT LOT 139 CON B HWY 69 PARRY SOUND ON

Database:
PRT

Location ID: 11384
Type: retail
Expiry Date: 1991-07-31
Capacity (L): 0
Licence #: 0051780001

Site: LEVERNE SHURR
LOT 6 CON A HWY 69 N PARRY SOUND ON

Database:
PRT

Location ID: 11372
Type: retail
Expiry Date: 1995-07-31
Capacity (L): 25957
Licence #: 0022508001

Site: 972440 ONTARIO INC NORTHWAY TRUCK STOP
HWY 69 RR 2 PARRY SOUND ON

Database:
PRT

Location ID: 20229
Type: retail
Expiry Date: 1995-09-30
Capacity (L): 127277
Licence #: 0076366350

Site: SMITH MARINE
LOT 27 CON 23 HWY 69 MOWAT PARRY SOUND ON

Database:
PRT

Location ID: 11368
Type: retail
Expiry Date: 1995-07-31
Capacity (L): 500
Licence #: 0056099001

Site: **PARRY SOUND READY-MIX LTD.**
HWY 69 PARRY SOUND ON

Database:
SCT

Established: 1965
Plant Size (ft²): 0
Employment: 4

--- Details ---

SIC/NAICS Code: 3273
Description: READY-MIXED CONCRETE
+
SIC/NAICS Code: 327320
Description: Ready-Mix Concrete Manufacturing

Site: **JAMOT LUMBER CO LTD**
HWY 522 PAKESLEY ON

Database:
SCT

Established: 1971
Plant Size (ft²):
Employment: 22

--- Details ---

SIC/NAICS Code: 2421
Description: SAWMILLS & PLANING MILLS, GENERAL

Site: **Light Speed<UNOFFICIAL>**
Hwy 69. South of Still River Parry Sound ON

Database:
SPL

Ref No.: 5470-7PNN87
Incident Dt:
MOE Reported Dt: 2/27/2009
Contaminant Name: ENGINE OIL
Contaminant Quantity:
Incident Summary: HWY 69, S of Still River. TT operational fl. to grnd. clng
Incident Cause: Other Transport Accident
Incident Reason: Spill
Nature of Impact: Soil Contamination; Surface Water Pollution
Receiving Medium:
Environmental Impact: Confirmed

Site: **1389149 Ontario Inc.**
Hwy 69, 40 miles north of Parry Sound in Still River Parry Sound ON

Database:
SPL

Ref No.: 0172-79DEHJ
Incident Dt:
MOE Reported Dt: 11/28/2007
Contaminant Name: DIESEL FUEL
Contaminant Quantity: 2250 L
Incident Summary: MVA - Hwy 69, tractor trailer rollover
Incident Cause: Other Transport Accident
Incident Reason: Ice/Frost - Freezing
Nature of Impact: Soil Contamination

Receiving Medium: Land
Environmental Impact: Confirmed

Site: *Trappers Transport Ltd.*
Hwy 69, 3km N of Magnetewan Reserve, Britt Parry Sound ON

Database:
SPL

Ref No.: 2186-7XG5ZX
Incident Dt:
MOE Reported Dt: 11/3/2009
Contaminant Name: DIESEL FUEL
Contaminant Quantity: 700 L
Incident Summary: Trappers Transport: 700L of diesel to ditch/creek
Incident Cause:
Incident Reason:
Nature of Impact: Soil Contamination; Surface Water Pollution
Receiving Medium:
Environmental Impact: Confirmed

Site: *Manitoulin Transport Inc.*
Hwy 69, 15 km south of Point Au Baril, north of Parry Sound Parry Sound ON

Database:
SPL

Ref No.: 2253-94XJ4T
Incident Dt: 15-FEB-13
MOE Reported Dt: 15-FEB-13
Contaminant Name: DIESEL FUEL
Contaminant Quantity: 200 L
Incident Summary: MVA, Manitoulin Transport, <50 L diesel Hwy 69, Parry Sound
Incident Cause: Collision/Accident
Incident Reason: Weather Conditions
Nature of Impact: Soil Contamination
Receiving Medium:
Environmental Impact: Confirmed

Site: *Harmac Transportation Inc.*
Hwy 69 Parry Sound ON

Database:
SPL

Ref No.: 7222-6NKL06
Incident Dt: 11/29/2006
MOE Reported Dt: 11/29/2006
Contaminant Name: DIESEL FUEL AND WATER MIXTURE
Contaminant Quantity: 200 L
Incident Summary: Hwy 69 and Pickerel R.: spill of fuel to Hwy.
Incident Cause: Container Leak (Fuel Tank Barrels)
Incident Reason: Debris on Road
Nature of Impact: Soil Contamination; Surface Water Pollution
Receiving Medium: Land & Water
Environmental Impact: Confirmed

Site: *Challenger Motor Freight Inc.*
HWY 69 Southbound, 1KM south of Woods Rd (15KM N of Parry Sound) Parry Sound ON

Database:
SPL

Ref No.: 5431-8P4U2R
Incident Dt: 11/30/2011
MOE Reported Dt: 11/30/2011
Contaminant Name: DIESEL FUEL
Contaminant Quantity: 250 L

Incident Summary: Challenger Freight MVA- HWY 69 Southbound
Incident Cause: Other Transport Accident
Incident Reason: Spill
Nature of Impact: Soil Contamination; Surface Water Pollution
Receiving Medium: Sewage - Municipal/Private and Commercial
Environmental Impact: Confirmed

Site: **Wilson Transport<UNOFFICIAL>**
H'way 69 S/B between Still River and H'way 526 Henvey ON

Database:
SPL

Ref No.: 4221-77MGYY
Incident Dt:
MOE Reported Dt: 10/3/2007
Contaminant Name: DIESEL FUEL
Contaminant Quantity: 100 L
Incident Summary: Highway 69: TT spilt diesel to road, shoulder
Incident Cause: Other Discharges
Incident Reason:
Nature of Impact: Soil Contamination
Receiving Medium: Land
Environmental Impact: Confirmed

Site: **TRANSPROVINCIAL FREIGHT**
HWY # 69 NORTHBOUND, APPROX 10 MILES NORTH OF POINTE AU BARIL. PARRY SOUND
DISTRICT ON

Database:
SPL

Ref No.: 143849
Incident Dt: 7/18/1997
MOE Reported Dt: 7/19/1997
Contaminant Name:
Contaminant Quantity:
Incident Summary: TRANSPROVINCIAL FREIGHT- TRUCK OVERTURN/ON FIRE,40TONNES ALLOYS TO DITCH.
Incident Cause: TRUCK/TRAILER OVERTURN
Incident Reason: EQUIPMENT FAILURE
Nature of Impact: Soil contamination
Receiving Medium: LAND
Environmental Impact: POSSIBLE

Site: **PRIVATE OWNER**
WALLBRIDGE TOWNSHIP HWY 69 AT NAISCOOT RIVER BRIDGE. PARRY SOUND DISTRICT ON

Database:
SPL

Ref No.: 90088
Incident Dt: 8/20/1993
MOE Reported Dt: 8/20/1993
Contaminant Name:
Contaminant Quantity:
Incident Summary: PRIVATE VEHICLE-45L GAS TO NAISCOOT RIVER.
Incident Cause: OTHER TRANSPORTATION ACCIDENT
Incident Reason: ERROR
Nature of Impact: Water course or lake
Receiving Medium: LAND / WATER
Environmental Impact: POSSIBLE

Site: **PRIVATE OWNER**
SEGUIN RIVER AT MILL LAKE(AT HWY # 69 BRIDGE). PARRY SOUND TOWN ON

Database:
SPL

Ref No.: 165410
Incident Dt: 3/10/1999
MOE Reported Dt: 3/11/1999
Contaminant Name:
Contaminant Quantity:
Incident Summary: MARATHON DRILLING - OILY SHEEN VISIBLE FROM SUBMERGED DRILL RIG.
Incident Cause: WASTEWATER DISCHARGE TO WATERCOURSE
Incident Reason: OTHER
Nature of Impact: Water course or lake
Receiving Medium: WATER
Environmental Impact: POSSIBLE

Site: **ICG PROPANE**
POINTE AU BARIL HAMLET ON HWY 69 PARRY SOUND DISTRICT ON

Database:
SPL

Ref No.: 112334
Incident Dt: 4/25/1995
MOE Reported Dt: 4/25/1995
Contaminant Name:
Contaminant Quantity:
Incident Summary: WING SHELL-<1 L/MINUTE PROPANE TO ATM, LEAKING VALVE,FD,OPP ONSITE.
Incident Cause: PIPE/HOSE LEAK
Incident Reason: EQUIPMENT FAILURE
Nature of Impact:
Receiving Medium: AIR
Environmental Impact: NOT ANTICIPATED

Site: **J & M TRUCKING & EXCAVATING**
ON HWY #69 BETWEEN KEY RIVER & STILL RIVER OPP DETACHMENT, HENVEY TWP PARRY
SOUND DISTRICT ON

Database:
SPL

Ref No.: 76348
Incident Dt: 9/16/1992
MOE Reported Dt: 9/16/1992
Contaminant Name:
Contaminant Quantity:
Incident Summary: J & M TRUCKING & EXCAV.- 450L DIESEL FROM TRACTOR ALONG 4 KM ON HWY #69.
Incident Cause: OTHER CONTAINER LEAK
Incident Reason: UNKNOWN
Nature of Impact: Soil contamination
Receiving Medium: LAND
Environmental Impact: POSSIBLE

Site: **TRANSPORT TRUCK**
MVA, HIGHWAY 69 AT THE GORDON BAY MARINA PARRY SOUND TOWN ON

Database:
SPL

Ref No.: 176802
Incident Dt: 1/19/2000
MOE Reported Dt: 1/19/2000
Contaminant Name:
Contaminant Quantity:
Incident Summary: TRANSPORT TRUCK:MVA,SPILLOF DIESEL.UNK QUANTITIES INTO DITCH.FD
Incident Cause: OTHER TRANSPORTATION ACCIDENT
Incident Reason: UNKNOWN
Nature of Impact: Multi Media Pollution
Receiving Medium: LAND
Environmental Impact: POSSIBLE

Site: PRIVATE OWNER
MACDONALDS PARKING LOT AT HWY 69. PARRY SOUND TOWN ON

Database:
SPL

Ref No.: 152514
Incident Dt: 2/17/1998
MOE Reported Dt: 2/17/1998
Contaminant Name:
Contaminant Quantity:
Incident Summary: GREY HOUND BUS- 25L OF DIESEL FUEL TO PARKING LOT. CLEANING
Incident Cause: PIPE/HOSE LEAK
Incident Reason: EQUIPMENT FAILURE
Nature of Impact:
Receiving Medium: LAND
Environmental Impact: NOT ANTICIPATED

Site: ONTARIO HYDRO
LOT 26, CONC 7, HARRISON TWP. CORNER OF HWY # 69/STURGEON BAY RD. PARRY SOUND DISTRICT ON

Database:
SPL

Ref No.: 144240
Incident Dt: 7/28/1997
MOE Reported Dt: 7/28/1997
Contaminant Name:
Contaminant Quantity:
Incident Summary: ONTARIO HYDRO - 25 L HY- DRAULIC OIL ONTO GROUND FROM TRUCK, CLEANED UP.
Incident Cause: PIPE/HOSE LEAK
Incident Reason: EQUIPMENT FAILURE
Nature of Impact: Soil contamination
Receiving Medium: LAND
Environmental Impact: CONFIRMED

Site: VOYAGEUR
JUST OFF HWY 69 AT GEORGE HUNT MEMORIAL DRIVE - MACDOUGALL PARRY SOUND DISTRICT ON

Database:
SPL

Ref No.: 17814
Incident Dt: 4/29/1989
MOE Reported Dt: 4/29/1989
Contaminant Name:
Contaminant Quantity:
Incident Summary: VOYAGEUR GAS BAR - GASOLINE ODORS AND SHEEN IN CULVERT.
Incident Cause: UNDERGROUND TANK LEAK
Incident Reason: UNKNOWN
Nature of Impact:
Receiving Medium: LAND / WATER
Environmental Impact:

Site: PIN TO PIN Express Inc.
HWY. 69 S., 2 KM. S. OF ALBAN Killarney ON

Database:
SPL

Ref No.: 6252-5YQR4U
Incident Dt: 5/3/2004
MOE Reported Dt: 5/6/2004
Contaminant Name: DIESEL FUEL

Contaminant Quantity: 682.5 L
Incident Summary: Hwy 69 Unknown Qty of Diesel Fuel Oil to Swamp
Incident Cause: Other Transport Accident
Incident Reason: Unknown - Reason not determined
Nature of Impact: Soil Contamination; Surface Water Pollution
Receiving Medium: Land & Water
Environmental Impact: Confirmed

Site: **AUTO HAULWAY (1981) LTD.**
HWY 69,6 KM NORTH OF NOBEL PARRY SOUND DISTRICT ON

Database:
SPL

Ref No.: 89454
Incident Dt: 8/6/1993
MOE Reported Dt: 8/6/1993
Contaminant Name:
Contaminant Quantity:
Incident Summary: AUTO HAULWAY- -70 LITERSDIESEL FUEL TO ROAD,DITCH,FD,MTO,OPP.
Incident Cause: OTHER CONTAINER LEAK
Incident Reason: ERROR
Nature of Impact: Soil contamination
Receiving Medium: LAND
Environmental Impact: POSSIBLE

Site: **ALLIED VAN LINES**
HWY 69, WALLBRIDGE TWP. PARRY SOUND DISTRICT ON

Database:
SPL

Ref No.: 115965
Incident Dt: 7/18/1995
MOE Reported Dt: 7/18/1995
Contaminant Name:
Contaminant Quantity:
Incident Summary: ALLIED VAN LINES: 675 L DIESEL FUEL TO HWY 69 & GROUND FROM SADDLE TANK.
Incident Cause: OTHER CONTAINER LEAK
Incident Reason: MATERIAL FAILURE
Nature of Impact: Soil contamination
Receiving Medium: LAND
Environmental Impact: CONFIRMED

Site: **REIMER EXPRESS LINES LTD.**
HWY 69, OPPOSITE BOUCHER REAL ESTATE PARRY SOUND TOWN ON

Database:
SPL

Ref No.: 22278
Incident Dt: 7/19/1989
MOE Reported Dt: 7/19/1989
Contaminant Name:
Contaminant Quantity:
Incident Summary: REIMER EXPRESS- LOST 65L OF DIESEL FUEL TO DITCH AT SIDE OF HWY.
Incident Cause: OTHER TRANSPORTATION ACCIDENT
Incident Reason: OTHER
Nature of Impact:
Receiving Medium: LAND
Environmental Impact:

Site: **TRANSPORT TRUCK**
HWY 69 N/B, 1 MILE NORTH OF BOWES STREET. PARRY SOUND TOWN ON

Database:
SPL

Ref No.: 115432
Incident Dt: 7/7/1995
MOE Reported Dt: 7/7/1995
Contaminant Name:
Contaminant Quantity:
Incident Summary: MANITOULIN TRANSPORT: 45 L OF DIESEL TO ROAD AND DITCH,CONTAINED & CLEANED
Incident Cause: OTHER CONTAINER LEAK
Incident Reason: ADVERSE ROAD CONDITION
Nature of Impact: Soil contamination
Receiving Medium: LAND
Environmental Impact: POSSIBLE

Site: UNKNOWN
HWY 69 JUST NORTH OF PARRY SOUND PARRY SOUND DISTRICT ON

Database:
SPL

Ref No.: 12536
Incident Dt: 12/6/1988
MOE Reported Dt: 12/6/1988
Contaminant Name:
Contaminant Quantity:
Incident Summary:
Incident Cause: UNKNOWN
Incident Reason: UNKNOWN
Nature of Impact:
Receiving Medium: LAND
Environmental Impact:

Site: PRIVATE BUSINESS
HWY 69 BRITT, LONG BRANCH MOTEL PARRY SOUND DISTRICT ON

Database:
SPL

Ref No.: 29578
Incident Dt: 11/6/1989
MOE Reported Dt: 11/6/1989
Contaminant Name:
Contaminant Quantity:
Incident Summary: BACKENTRY-GASOLINE SEEPED INTO MOTEL BASEMENT.
Incident Cause: ABOVE-GROUND TANK LEAK
Incident Reason: CORROSION
Nature of Impact: Other
Receiving Medium: LAND
Environmental Impact: POSSIBLE

Site: MANITOULIN TRANSPORT
HWY 69 AT LAKE JOSEPH. PARRY SOUND DISTRICT ON

Database:
SPL

Ref No.: 99722
Incident Dt: 5/11/1994
MOE Reported Dt: 5/11/1994
Contaminant Name:
Contaminant Quantity:
Incident Summary: MANITOULIN TRANSPORT-UKN QTY DIESEL FUEL TO HWY 69,TRUCK STRUCK BRIDGE.
Incident Cause: OTHER CONTAINER LEAK
Incident Reason: ERROR
Nature of Impact: Soil contamination
Receiving Medium: LAND
Environmental Impact: POSSIBLE

Site: **Manitoulin Transport Inc. (New Liskeard)**
HWY 69 , 1 KM SOUTH OF STILL RIVER<UNOFFICIAL> Henvey ON

Database:
SPL

Ref No.: 1477-63CAVX
Incident Dt: 7/29/2004
MOE Reported Dt: 7/29/2004
Contaminant Name:
Contaminant Quantity:
Incident Summary: Manitoulin Transport, fire of dangerous goods, ERP
Incident Cause: Other Discharges
Incident Reason: Fire/Explosion - Resulting from fires/explosions (Not occurrences which cause a fire or explosion)
Nature of Impact: Air Pollution; Soil Contamination
Receiving Medium: Air & Land
Environmental Impact: Possible

Site: **WEEKS CONSTRUCTION LTD**
HWY 69 PARRY SOUND DISTRICT ON

Database:
SPL

Ref No.: 141483
Incident Dt: 6/2/1997
MOE Reported Dt: 6/2/1997
Contaminant Name:
Contaminant Quantity:
Incident Summary: WEEKS CONSTRUCTION SPILL OF DRY COMPRESSED CREOSOTE 100 KG
Incident Cause: TRUCK/TRAILER OVERTURN
Incident Reason: OTHER
Nature of Impact:
Receiving Medium: LAND
Environmental Impact: NOT ANTICIPATED

Site: **B & K TRUCKING**
HWY 69 PARRY SOUND DISTRICT ON

Database:
SPL

Ref No.: 36106
Incident Dt: 6/12/1990
MOE Reported Dt: 6/12/1990
Contaminant Name:
Contaminant Quantity:
Incident Summary: B & K TRUCKING - LOST 310 LTR OF DIESEL FUEL TO HWY, MTO WILL SAND ROAD.
Incident Cause: OTHER CONTAINER LEAK
Incident Reason: EQUIPMENT FAILURE
Nature of Impact:
Receiving Medium: LAND
Environmental Impact: NOT ANTICIPATED

Site: **SHERWAY TRANSPORT**
HWY #69 NEAR HENVEY TWP PARRY SOUND TOWN ON

Database:
SPL

Ref No.: 1062
Incident Dt: 3/8/1988
MOE Reported Dt: 3/8/1988
Contaminant Name:
Contaminant Quantity:
Incident Summary: SHERWAY TRANSPORT TRUCK -LEAKING SADDLE TANK, DIESEL TO GROUND ON

Incident Cause: HWY69
Incident Reason: OTHER TRANSPORTATION ACCIDENT
Nature of Impact: EQUIPMENT FAILURE
Receiving Medium: LAND
Environmental Impact: NOT ANTICIPATED

Site: TRANS-PROVINCIAL FREIGHT CARRI
HIGHWAY 69, HENVEY TOWNSHIP STILL RIVER TRUCK STOP PARRY SOUND DISTRICT ON

Database:
SPL

Ref No.: 76118
Incident Dt: 9/11/1992
MOE Reported Dt: 9/8/1992
Contaminant Name:
Contaminant Quantity:
Incident Summary: TRANS PROVINCIAL-UNK QTY DIESEL FUEL FROM HEAVY EQUIP ON TRAILER
FLOAT.
Incident Cause: VALVE/FITTING LEAK OR FAILURE
Incident Reason: WELD/SEAM FAILURE
Nature of Impact:
Receiving Medium: LAND
Environmental Impact: NOT ANTICIPATED

Site: PRIVATE OWNER
HIGHWAY 69 PARRY SOUND TOWN ON

Database:
SPL

Ref No.: 137007
Incident Dt: 2/9/1997
MOE Reported Dt: 2/9/1997
Contaminant Name:
Contaminant Quantity:
Incident Summary: PRIVATE MOTOR VEHICLE: 3 L GASOLINE TO GROUND FROM LEAK IN GAS TANK
Incident Cause: OTHER CONTAINER LEAK
Incident Reason: CORROSION
Nature of Impact:
Receiving Medium: LAND
Environmental Impact: NOT ANTICIPATED

Site: ESSO PETROLEUM CANADA
HIGHWAY 69 PARRY SOUND TOWN ON

Database:
SPL

Ref No.: 73187
Incident Dt: 7/8/1992
MOE Reported Dt: 7/8/1992
Contaminant Name:
Contaminant Quantity:
Incident Summary: ESSO PETROLEUM: 3 L GASOLINE SPILLED TO ASPHALT AT STATION
Incident Cause: PIPE/HOSE LEAK
Incident Reason: ERROR
Nature of Impact:
Receiving Medium: LAND
Environmental Impact: NOT ANTICIPATED

Site: TRANSPORT TRUCK
HENVEY TWP. BRITT, STILL R. AREA ON HWY 69 PARRY SOUND DISTRICT ON

Database:
SPL

Ref No.: 26901
Incident Dt: 10/24/1989
MOE Reported Dt: 10/24/1989
Contaminant Name:
Contaminant Quantity:
Incident Summary: TANDEM/ LAKEHEAD TRUCKING-400 L DIESEL FUEL TO GROUND. CONTAINED.
Incident Cause: OTHER TRANSPORTATION ACCIDENT
Incident Reason: ERROR
Nature of Impact:
Receiving Medium: LAND
Environmental Impact:

Site: **PENNY AND CASSON CONTRACTORS**
ESSO SERVICE STATION #88001966 ON HWY 69 AT NOBEL PARRY SOUND ON

Database:
SPL

Ref No.: 183306
Incident Dt: 7/7/2000
MOE Reported Dt: 7/7/2000
Contaminant Name:
Contaminant Quantity:
Incident Summary: PENNY & CASSON: 50 L GAS-OLINE TO ASPHALT ONLY. TANK OVERFILL.CLEANED.
Incident Cause: CONTAINER OVERFLOW
Incident Reason: ERROR
Nature of Impact:
Receiving Medium: LAND
Environmental Impact: NOT ANTICIPATED

Site: **MANITOULIN TRANSPORT**
ALONG HWY. 69 FROM BRITT TO POINTE AU BARIL PARRY SOUND DISTRICT ON

Database:
SPL

Ref No.: 97220
Incident Dt: 3/10/1994
MOE Reported Dt: 3/10/1994
Contaminant Name:
Contaminant Quantity:
Incident Summary: MANITOULIN TRANSPORT - DIESEL FUEL TO HWY. FROM TRUCK'S SADDLE TANK.
Incident Cause: OTHER CONTAINER LEAK
Incident Reason: UNKNOWN
Nature of Impact: Soil contamination
Receiving Medium: LAND
Environmental Impact: POSSIBLE

Site: **TANK TRUCKLINES**
45 MI. S OF SUDBURY ON HWY 69, N OF PICKEREL BRIDGE., MOWAT TWP PARRY SOUND
DISTRICT ON

Database:
SPL

Ref No.: 28600
Incident Dt: 12/7/1989
MOE Reported Dt: 12/7/1989
Contaminant Name:
Contaminant Quantity:
Incident Summary: TANKER TRUCKLINES-12L 50%SODIUM HYDROXIDE TO ROAD *MEDIA INVOLVEMENT*
Incident Cause: TRUCK/TRAILER OVERTURN
Incident Reason: ADVERSE ROAD CONDITION
Nature of Impact:
Receiving Medium: LAND / WATER
Environmental Impact: NOT ANTICIPATED

Site: **TRANSPORT TRUCK**
HWY. 522 JUST NORTH OF PARRY SOUND PARRY SOUND TOWN ON

Database:
SPL

Ref No.: 180104
Incident Dt: 4/28/2000
MOE Reported Dt: 4/28/2000
Contaminant Name:
Contaminant Quantity:
Incident Summary: TRANSPORT TRUCK: SPILL OF MINOR QUANTITIES FUEL OIL FROM STORAGE TANK. OPP, FD
Incident Cause: OTHER TRANSPORTATION ACCIDENT
Incident Reason: OTHER
Nature of Impact: Soil contamination
Receiving Medium: LAND
Environmental Impact: POSSIBLE

Site: **NEAR NORTH DISTRICT SCHOOL BOA**
ARGYLE PUBLIC SCHOOL, HIGHWAY 522 BOX 1, PORT LORING PARRY SOUND ON

Database:
SPL

Ref No.: 190612
Incident Dt: //
MOE Reported Dt: 11/17/2000
Contaminant Name:
Contaminant Quantity:
Incident Summary: NEAR NORTH S.B.: UNKNOWN AMOUNT FUEL TO GROUND. CAUSE UNKNOWN. CLEANING.
Incident Cause: UNKNOWN
Incident Reason: UNKNOWN
Nature of Impact: Soil contamination
Receiving Medium: LAND
Environmental Impact: POSSIBLE

Site: **S.21**
911 # IS 12077 HWY 522 IN LORING<UNOFFICIAL> Parry Sound ON

Database:
SPL

Ref No.: 7774-5WJJLP
Incident Dt: 2/26/2004
MOE Reported Dt: 2/26/2004
Contaminant Name: FURNACE OIL
Contaminant Quantity: 600 L
Incident Summary: Private Residence-600 L F/O to Ground.
Incident Cause:
Incident Reason:
Nature of Impact:
Receiving Medium: Land
Environmental Impact:

Site: **On Hwy. #69 - Crosses over Seguin River where northbound lanes decrease from 4 to Parry Sound ON**

Database:
SPL

Ref No.: 0800-6VXS5G
Incident Dt: 11/27/2006
MOE Reported Dt: 11/27/2006
Contaminant Name: Siltation
Contaminant Quantity: Not Specified Not Specified
Incident Summary: Seguin R.: Turbidity Curtain fell & discharged silt to River
Incident Cause: Discharge Or Bypass To A Watercourse

Incident Reason: Equipment Failure
Nature of Impact: Surface Water Pollution
Receiving Medium: Water
Environmental Impact: Possible

Site: **The Corporation of the Municipality of Killarney**
West Side of Hwy.69, north of Key River Killarney ON

Database:
WDS

Certificate No.: A7108301
Issue Date: 7/12/2005
Status: Approved
Application Status:
Concession:
Lot:
Region/County:
Proponent:
Address:
City:
Facility Type:
District Office:
Municipalities Served:
Total Area (ha):
Landfill Capacity (m³):
Landfill Monitoring:
Landfill Control Type:
Est. Closure Date:
Transfer Area (ha):
Transfer Capacity (m³):
Transfer Sites Certificate No.:
Incinerator Area (ha):
Incinerator Capacity (t):
Processing Area (m³):
Processing Capacity (m³/d):
Processing Volume (m³):
Processing Feed (m³):
Mobile Units:
Mobile Description:
Mobile Capacity:
Mobile Unit Certificate No.:
Waste Type:
Waste Type Other:
Waste Class:
Other Approvals/Permits:
Approval Description:
Waste Description:
Site Closing Description:

Site: **E. OF KEY RIVER ON**

Database:
WWIS

Well ID:	4810396	Lot:	
Concession:		Concession	
		Name:	
County:	PARRY SOUND	Municipality:	UNSURVEYED
Easting Nad83:		Northing	
		Nad83:	
Zone:		Utm Reliability:	unknown UTM
Primary Water Use:		Construction	11-JUL-06
		Date:	
Sec. Water Use:		Well Depth:	

Pump Rate:

Flow Rate:

Specific Capacity:

Construction Method: Other Method

Elevation (m):

Depth to Bedrock:

Water Type:

Static Water

Level:

Clear/Cloudy:

Final Well

Observation Wells

Status:

Flowing (y/n):

Elevation

Reliability:

Overburden/Be

No formation data

drock:

Casing

Material:

Site:

ON

Database:

WWIS

Well ID: 4808295

Concession:

Lot: 035

Concession

Name:

County: PARRY SOUND

Municipality:

MOWAT TOWNSHIP

Easting Nad83:

Northing

Nad83:

Zone: 17

Utm Reliability:

unknown UTM

Primary Water Use:

Construction

27-APR-99

Date:

Sec. Water Use:

Well Depth:

85 ft

Pump Rate: 25 GPM

Static Water

25 ft

Level:

Flow Rate:

Clear/Cloudy:

CLEAR

Specific Capacity:

Final Well

Water Supply

Status:

Construction Method: Air Percussion

Flowing (y/n):

N

Elevation (m):

Elevation

Reliability:

Depth to Bedrock: 33

Overburden/Be

Bedrock

drock:

Water Type: FRESH

Casing

FRESH, MINERIAL

Material:

--- Details ---

Thickness: BROWN

Original Depth: 12 ft

Material Colour: SAND, GRAVEL

Material: 12 ft

+

Thickness: BROWN

Original Depth: 33 ft

Material Colour: SAND

Material: 21 ft

+

Thickness: GREY

Original Depth: 85 ft

Material Colour: GRANITE

Material: 52 ft

Appendix: Database Descriptions

*Ecolog Environmental Risk Information Services Ltd can search the following databases. The extent of Historical information varies with each database and current information is determined by what is publicly available to Ecolog ERIS at the time of update. **Note:** Databases denoted with " * " indicates that the database will no longer be updated. See the individual database description for more information.*

Abandoned Aggregate Inventory:

Provincial [AAGR](#)

The MAAP Program maintains a database of all abandoned pits and quarries. Please note that the database is only referenced by lot and concession and city/town location. The database provides information regarding the location, type, size, land use, status and general comments.*

*Government Publication Date: Sept 2002**

Aggregate Inventory:

Provincial [AGR](#)

The Ontario Ministry of Natural Resources maintains a database of all active pits and quarries. The database provides information regarding the registered owner/operator, location name, operation type, approval type, and maximum annual tonnage.

Government Publication Date: Up to Aug 2012

Abandoned Mine Information System:

Provincial [AMIS](#)

The Abandoned Mines Information System contains data on known abandoned and inactive mines located on both Crown and privately held lands. The information was provided by the Ministry of Northern Development and Mines (MNDM), with the following disclaimer: "the database provided has been compiled from various sources, and the Ministry of Northern Development and Mines makes no representation and takes no responsibility that such information is accurate, current or complete". Reported information includes official mine name, status, background information, mine start/end date, primary commodity, mine features, hazards and remediation.

Government Publication Date: 1800-Jan 2014

Anderson's Waste Disposal Sites:

Private [ANDR](#)

The information provided in this database was collected by examining various historical documents which aimed to characterize the likely position of former waste disposal sites from 1860 to present. The research initiative behind the creation of this database was to identify those sites that are missing from the Ontario MOE Waste Disposal Site Inventory, as well as to provide revisions and corrections to the positions and descriptions of sites currently listed in the MOE inventory. In addition to historic waste disposal facilities, the database also identifies certain auto wreckers and scrap yards that have been extrapolated from documentary sources. Please note that the data is not warranted to be complete, exhaustive or authoritative. The information was collected for research purposes only.

Government Publication Date: 1860s-Present

Automobile Wrecking & Supplies:

Private [AUWR](#)

This database provides an inventory of all known locations that are involved in the scrap metal, automobile wrecking/recycling, and automobile parts & supplies industry. Information is provided on the company name, location and business type.

Government Publication Date: 2001-Jul 2014

Borehole:Provincial [BORE](#)

A borehole is the generalized term for any narrow shaft drilled in the ground, either vertically or horizontally. The information here includes geotechnical investigations or environmental site assessments, mineral exploration, or as a pilot hole for installing piers or underground utilities. Information is from many sources such as the Ministry of Transportation (MTO) boreholes from engineering reports and projects from the 1950 to 1990's in Southern Ontario. Boreholes from the Ontario Geological Survey (OGS) including The Urban Geology Analysis Information System (UGAIS) and the York Peel Durham Toronto (YPDT) database of the Conservation Authority Moraine Coalition. This database will include fields such as location, stratigraphy, depth, elevation, year drilled, etc. For all water well data or oil and gas well data for Ontario please refer to WWIS and OOGW.

Government Publication Date: 1875-Jul 2014

Certificates of Approval:Provincial [CA](#)

This database contains the following types of approvals: Air & Noise, Industrial Sewage, Municipal & Private Sewage, Waste Management Systems and Renewable Energy Approvals. The MOE in Ontario states that any facility that releases emissions to the atmosphere, discharges contaminants to ground or surface water, provides potable water supplies, or stores, transports or disposes of waste, must have a Certificate of Approval before it can operate lawfully. Fields include approval number, business name, address, approval date, approval type and status. This database will no longer be updated, as CofA's have been replaced by either Environmental Activity and Sector Registry (EASR) or Environmental Compliance Approval (ECA). Please refer to those individual databases for any information after Oct.31, 2011.

*Government Publication Date: 1985-Oct 30, 2011**

Commercial Fuel Oil Tanks:Provincial [CFOT](#)

Since May 2002, Ontario developed a new act where it became mandatory for fuel oil tanks to be registered with Technical Standards & Safety Authority (TSSA). This data would include all commercial underground fuel oil tanks in Ontario with fields such as location, registration number, tank material, age of tank and tank size.

Government Publication Date: 1948-2014

Chemical Register:Private [CHEM](#)

This database includes information from both a one time study conducted in 1992 and private source and is a listing of facilities that manufacture or distribute chemicals. The production of these chemical substances may involve one or more chemical reactions and/or chemical separation processes (i.e. fractionation, solvent extraction, crystallization, etc.).

Government Publication Date: 1992, 1999-Jul 2014

Inventory of Coal Gasification Plants and Coal Tar Sites:Provincial [COAL](#)

This inventory includes both the "Inventory of Coal Gasification Plant Waste Sites in Ontario-April 1987" and the Inventory of Industrial Sites Producing or Using Coal Tar and Related Tars in Ontario-November 1988) collected by the MOE. It identifies industrial sites that produced and continue to produce or use coal tar and other related tars. Detailed information is available and includes: facility type, size, land use, information on adjoining properties, soil condition, site operators/occupants, site description, potential environmental impacts and historic maps available. This was a one-time inventory.*

*Government Publication Date: Apr 1987 and Nov 1988**

Compliance and Convictions:Provincial [CONV](#)

This database summarizes the fines and convictions handed down by the Ontario courts beginning in 1989. Companies and individuals named here have been found guilty of environmental offenses in Ontario courts of law.

Government Publication Date: 1989-Feb 2014

Certificates of Property Use:Provincial [CPU](#)

This is a subset taken from Ontario's Environmental Registry (EBR) database. It will include all CPU's on the registry such as (EPA s. 168.6) - Certificate of Property Use.

Government Publication Date: 1994-Jan 2015

Drill Hole Database:Provincial [DRL](#)

The Ontario Drill Hole Database contains information on more than 113,000 percussion, overburden, sonic and diamond drill holes from assessment files on record with the department of Mines and Minerals. Please note that limited data is available for southern Ontario, as it was the last area to be completed. The database was created when surveys submitted to the Ministry were converted in the Assessment File Research Image Database (AFRI) project. However, the degree of accuracy (coordinates) as to the exact location of drill holes is dependent upon the source document submitted to the MNM. Levels of accuracy used to locate holes are: centering on the mining claim; a sketch of the mining claim; a 1:50,000 map; a detailed company map; or from submitted a "Report of Work".

Government Publication Date: 1886-Jan 2014

Environmental Activity and Sector Registry:Provincial [EASR](#)

On October 31, 2011, a smarter, faster environmental approvals system came into effect in Ontario. The EASR allows businesses to register certain activities with the ministry, rather than apply for an approval. The registry is available for common systems and processes, to which preset rules of operation can be applied. The EASR is currently available for: heating systems, standby power systems and automotive refinishing. Businesses whose activities aren't subject to the EASR may apply for an ECA (Environmental Compliance Approval), Please see our ECA database.

Government Publication Date: Oct 31 2011-Apr 2015

Environmental Registry:Provincial [EBR](#)

The Environmental Registry lists proposals, decisions and exceptions regarding policies, Acts, instruments, or regulations that could significantly affect the environment. Through the Registry, thirteen provincial ministries notify the public of upcoming proposals and invite their comments. For example, if a local business is requesting a permit, license, or certificate of approval to release substances into the air or water; these are notified on the registry. Data includes: Approval for discharge into the natural environment other than water (i.e. Air) - EPA s. 9, Approval for sewage works - OWRA s. 53(1), and EPA s. 27 - Approval for a waste disposal site. For information regarding Permit to Take Water (PTTW), Certificate of Property Use (CPU) and (ORD) Orders please refer to those individual databases.

Government Publication Date: 1994-Jan 2015

Environmental Compliance Approval:Provincial [ECA](#)

On October 31, 2011, a smarter, faster environmental approvals system came into effect in Ontario. In the past, a business had to apply for multiple approvals (known as certificates of approval) for individual processes and pieces of equipment. Today, a business either registers itself, or applies for a single approval, depending on the types of activities it conducts. Businesses whose activities aren't subject to the EASR may apply for an ECA. A single ECA addresses all of a business's emissions, discharges and wastes. Separate approvals for air, noise and waste are no longer required. This database will also include Renewable Energy Approvals. For CofA's prior to Nov 1st, 2011, please refer to the CA database. For all Waste Disposal Sites please refer to the WDS database.

Government Publication Date: Oct 31, 2011-Mar 2015

Environmental Effects Monitoring:Federal [EEM](#)

The Environmental Effects Monitoring program assesses the effects of effluent from industrial or other sources on fish, fish habitat and human usage of fisheries resources. Since 1992, pulp and paper mills have been required to conduct EEM studies under the Pulp and Paper Effluent Regulations. This database provides information on the mill name, geographical location and sub-lethal toxicity data.

*Government Publication Date: 1992-2007**

ERIS Historical Searches:Private [EHS](#)

EcoLog ERIS has compiled a database of all environmental risk reports completed since March 1999. Available fields for this database include: site location, date of report, type of report, and search radius. As per all other databases, the ERIS database can be referenced on both the map and "Statistical Profile" page.

Government Publication Date: 1999-Aug 2014

Environmental Issues Inventory System:Federal [EIIS](#)

The Environmental Issues Inventory System was developed through the implementation of the Environmental Issues and Remediation Plan. This plan was established to determine the location and severity of contaminated sites on inhabited First Nation reserves, and where necessary, to remediate those that posed a risk to health and safety; and to prevent future environmental problems. The EIIS provides information on the reserve under investigation, inventory number, name of site, environmental issue, site action (Remediation, Site Assessment), and date investigation completed.

*Government Publication Date: 1992-2001**

List of TSSA Expired Facilities:Provincial [EXP](#)

This is a list of all expired facilities that fall under the TSSA (TSSA Act & Safety Regulations), including the six regulations that exist under the Fuels Safety Division. It will include facilities such as private fuel outlets, bulk plants, fuel oil tanks, gasoline stations, marinas, propane filling stations, liquid fuel tanks, piping systems, etc. These tanks have been removed and automatically fall under the expired facilities inventory held by TSSA.

Government Publication Date: Current to Nov 2014

Federal Convictions:Federal [FCON](#)

Environment Canada maintains a database referred to as the "Environmental Registry" that details prosecutions under the Canadian Environmental Protection Act (CEPA) and the Fisheries Act (FA). Information is provided on the company name, location, charge date, offence and penalty.

*Government Publication Date: 1988-Jun 2007**

Contaminated Sites on Federal Land:Federal [FCS](#)

The Federal Contaminated Sites Inventory includes information on all known federal contaminated sites under the custodianship of departments, agencies and consolidated Crown corporations as well as those that are being or have been investigated to determine whether they have contamination arising from past use that could pose a risk to human health or the environment. The inventory also includes non-federal contaminated sites for which the Government of Canada has accepted some or all financial responsibility. It does not include sites where contamination has been caused by, and which are under the control of, enterprise Crown corporations, private individuals, firms or other levels of government.

Government Publication Date: June 2000-Jan 2015

Fisheries & Oceans Fuel Tanks:Federal [FOFT](#)

Fisheries & Oceans Canada maintains an inventory of all aboveground & underground fuel storage tanks located on Fisheries & Oceans property or controlled by DFO. Our inventory provides information on the site name, location, tank owner, tank operator, facility type, storage tank location, tank contents & capacity, and date of tank installation.

Government Publication Date: 1964-Sept 2003

Fuel Storage Tank:Provincial [FST](#)

The Technical Standards & Safety Authority (TSSA), under the Technical Standards & Safety Act of 2000 maintains a database of registered private and retail fuel storage tanks in Ontario with fields such as location, tank status, license date, tank type, tank capacity, fuel type, installation year and facility type.

Government Publication Date: 2010-Nov 2014

Fuel Storage Tank - Historic:Provincial [FSTH](#)

The Technical Standards & Safety Authority (TSSA), under the Technical Standards & Safety Act of 2000 maintains a database of registered private and retail fuel storage tanks in Ontario with fields such as location, tank status, license date, tank type, tank capacity, fuel type, installation year and facility type.

*Government Publication Date: Pre-Jan 2010**

Ontario Regulation 347 Waste Generators Summary:

Provincial GEN

Regulation 347 of the Ontario EPA defines a waste generation site as any site, equipment and/or operation involved in the production, collection, handling and/or storage of regulated wastes. A generator of regulated waste is required to register the waste generation site and each waste produced, collected, handled, or stored at the site. This database contains the registration number, company name and address of registered generators including the types of hazardous wastes generated. It includes data on waste generating facilities such as: drycleaners, waste treatment and disposal facilities, machine shops, electric power distribution etc. This information is a summary of all years from 1986 including the most currently available data. Some records may contain, within the company name, the phrase "See & Use..." followed by a series of letters and numbers. This occurs when one company is amalgamated with or taken over by another registered company. The number listed as "See & Use", refers to the new ownership and the other identification number refers to the original ownership. This phrase serves as a link between the 2 companies until operations have been fully transferred.

*Government Publication Date: 1986-Apr 2014***TSSA Historic Incidents:**

Provincial HINC

This database will cover all incidences recorded by TSSA with their older system, before they moved to their new management system. TSSA's Fuels Safety Program administers the Technical Standards & Safety Act 2000, providing fuel-related safety services associated with the safe transportation, storage, handling and use of fuels such as gasoline, diesel, propane, natural gas and hydrogen. Under this Act, TSSA regulates fuel suppliers, storage facilities, transport trucks, pipelines, contractors and equipment or appliances that use fuels. The TSSA works to protect the public, the environment and property from fuel-related hazards such as spills, fires and explosions. This database will include spills and leaks from pipelines, diesel, fuel oil, gasoline, natural gas, propane and hydrogen recorded by the TSSA.

*Government Publication Date: 2006-June 2009****Indian & Northern Affairs Fuel Tanks:**

Federal IAFI

The Department of Indian & Northern Affairs Canada (INAC) maintains an inventory of all aboveground & underground fuel storage tanks located on both federal and crown land. Our inventory provides information on the reserve name, location, facility type, site/facility name, tank type, material & ID number, tank contents & capacity, and date of tank installation.

*Government Publication Date: 1950-Aug 2003****TSSA Incidents:**

Provincial INC

TSSA's Fuels Safety Program administers the Technical Standards & Safety Act 2000, providing fuel-related safety services associated with the safe transportation, storage, handling and use of fuels such as gasoline, diesel, propane, natural gas and hydrogen. Under this Act, TSSA regulates fuel suppliers, storage facilities, transport trucks, pipelines, contractors and equipment or appliances that use fuels. Includes incidents from fuel-related hazards such as spills, fires and explosions. This database will include spills and leaks from diesel, fuel oil, gasoline, natural gas, propane and hydrogen recorded by the TSSA.

*Government Publication Date: June 2009-2014***Landfill Inventory Management Ontario:**

Provincial LIMO

The Landfill Inventory Management Ontario (LIMO) database is updated every year, as the ministry compiles new and updated information. The inventory will include small and large landfills. Additionally, each year the ministry will request operators of the larger landfills complete a landfill data collection form that will be used to update LIMO and will include the following information from the previous operating year. This will include additional information such as estimated amount of total waste received, landfill capacity, estimated total remaining landfill capacity, fill rates, engineering designs, reporting and monitoring details, size of location, service area, approved waste types, leachate of site treatment, contaminant attenuation zone and more. The small landfills will include information such as site owner, site location and certificate of approval # and status.

Government Publication Date: 2012

Canadian Mine Locations:Private [MINE](#)

This information is collected from the Canadian & American Mines Handbook. The Mines database is a national database that provides over 290 listings on mines (listed as public companies) dealing primarily with precious metals and hard rocks. Listed are mines that are currently in operation, closed, suspended, or are still being developed (advanced projects). Their locations are provided as geographic coordinates (x, y and/or longitude, latitude). As of 2002, data pertaining to Canadian smelters and refineries has been appended to this database.

*Government Publication Date: 1998-2009**

Mineral Occurrences:Provincial [MNR](#)

In the early 70's, the Ministry of Northern Development and Mines created an inventory of approximately 19,000 mineral occurrences in Ontario, in regard to metallic and industrial minerals, as well as some information on building stones and aggregate deposits. Please note that the "Horizontal Positional Accuracy" is approximately +/- 200 m. Many reference elements for each record were derived from field sketches using pace or chain/tape measurements against claim posts or topographic features in the area. The primary limiting factor for the level of positional accuracy is the scale of the source material. The testing of horizontal accuracy of the source materials was accomplished by comparing the planimetric (X and Y) coordinates of that point with the coordinates of the same point as defined from a source of higher accuracy.

Government Publication Date: 1846-Apr 2013

National Analysis of Trends in Emergencies System (NATES):Federal [NATE](#)

In 1974 Environment Canada established the National Analysis of Trends in Emergencies System (NATES) database, for the voluntary reporting of significant spill incidents. The data was to be used to assist in directing the work of the emergencies program. NATES ran from 1974 to 1994. Extensive information is available within this database including company names, place where the spill occurred, date of spill, cause, reason and source of spill, damage incurred, and amount, concentration, and volume of materials released.

*Government Publication Date: 1974-1994**

Non-Compliance Reports:Provincial [NCPL](#)

The Ministry of the Environment provides information about non-compliant discharges of contaminants to air and water that exceed legal allowable limits, from regulated industrial and municipal facilities. A reported non-compliance failure may be in regard to a Control Order, Certificate of Approval, Sectoral Regulation or specific regulation/act.

Government Publication Date: 1994-2012

National Defence & Canadian Forces Fuel Tanks:Federal [NDFT](#)

The Department of National Defence and the Canadian Forces maintains an inventory of all aboveground & underground fuel storage tanks located on DND lands. Our inventory provides information on the base name, location, tank type & capacity, tank contents, tank class, date of tank installation, date tank last used, and status of tank as of May 2001. This database will no longer be updated due to the new National Security protocols which have prohibited any release of this database.

*Government Publication Date: Up to May 2001**

National Defence & Canadian Forces Spills:Federal [NDSP](#)

The Department of National Defence and the Canadian Forces maintains an inventory of spills to land and water. All spill sites have been classified under the "Transportation of Dangerous Goods Act - 1992". Our inventory provides information on the facility name, location, spill ID #, spill date, type of spill, as well as the quantity of substance spilled & recovered.

Government Publication Date: Mar 1999-Aug 2010

National Defence & Canadian Forces Waste Disposal Sites:Federal [NDWD](#)

The Department of National Defence and the Canadian Forces maintains an inventory of waste disposal sites located on DND lands. Where available, our inventory provides information on the base name, location, type of waste received, area of site, depth of site, year site opened/closed and status.

*Government Publication Date: 2001-Apr 2007**

National Environmental Emergencies System (NEES):

Federal

NEES

In 2000, the Emergencies program implemented NEES, a reporting system for spills of hazardous substances. For the most part, this system only captured data from the Atlantic Provinces, some from Quebec and Ontario and a portion from British Columbia. Data for Alberta, Saskatchewan, Manitoba and the Territories was not captured. However, NEES is also a repository for all previous Environment Canada spill datasets. NEES is composed of the historic datasets 'or Trends' which dates from approximately 1974 to present. NEES Trends is a compilation of historic databases, which were merged and includes data from NATES (National Analysis of Trends in Emergencies System), ARTS (Atlantic Regional Trends System), and NEES. In 2001, the Emergencies Program determined that variations in reporting regimes and requirements between federal and provincial agencies made national spill reporting and trend analysis difficult to achieve. As a consequence, the department has focused efforts on capturing data on spills of substances which fall under its legislative authority only (CEPA and FA). As such, the NEES database will be decommissioned in December 2004.

*Government Publication Date: 1974-2003**

National PCB Inventory:

Federal

NPCB

Environment Canada's National PCB inventory includes information on in-use PCB containing equipment in Canada including federal, provincial and private facilities. All federal out-of-service PCB containing equipment and all PCB waste owned by the federal government or by federally regulated industries such as airlines, railway companies, broadcasting companies, telephone and telecommunications companies, pipeline companies, etc. are also listed. Although it is not Environment Canada's mandate to collect data on non-federal PCB waste, the National PCB inventory includes some information on provincial and private PCB waste and storage sites. Some addresses provided may be Head Office addresses and are not necessarily the location of where the waste is being used or stored.

*Government Publication Date: 1988-2008**

National Pollutant Release Inventory:

Federal

NPRI

Environment Canada has defined the National Pollutant Release Inventory ("NPRI") as a federal government initiative designed to collect comprehensive national data regarding releases to air, water, or land, and waste transfers for recycling for more than 300 listed substances.

Government Publication Date: 1993-2013

Oil and Gas Wells:

Private

OGW

The Nickle's Energy Group (publisher of the Daily Oil Bulletin) collects information on drilling activity including operator and well statistics. The well information database includes name, location, class, status and depth. The main Nickle's database is updated on a daily basis, however, this database is updated on a monthly basis. More information is available at www.nickles.com.

Government Publication Date: 1988-Mar 2015

Ontario Oil and Gas Wells:

Provincial

OOGW

In 1998, the MNR handed over to the Ontario Oil, Gas and Salt Resources Corporation, the responsibility of maintaining a database of oil and gas wells drilled in Ontario. The OGSR Library has over 20,000+ wells in their database. Information available for all wells in the ERIS database include well owner/operator, location, permit issue date, well cap date, licence no., status, depth and the primary target (rock unit) of the well being drilled. All geology/stratigraphy table information, plus all water table information is also provided for each well record.

Government Publication Date: 1800-2013

Inventory of PCB Storage Sites:

Provincial

OPCB

The Ontario Ministry of Environment, Waste Management Branch, maintains an inventory of PCB storage sites within the province. Ontario Regulation 11/82 (Waste Management - PCB) and Regulation 347 (Generator Waste Management) under the Ontario EPA requires the registration of inactive PCB storage equipment and/or disposal sites of PCB waste with the Ontario Ministry of Environment. This database contains information on: 1) waste quantities; 2) major and minor sites storing liquid or solid waste; and 3) a waste storage inventory.

Government Publication Date: 1987-Oct 2004

Orders:Provincial [ORD](#)

This is a subset taken from Ontario's Environmental Registry (EBR) database. It will include all Orders on the registry such as (EPA s. 17) - Order for remedial work, (EPA s. 18) - Order for preventative measures, (EPA s. 43) - Order for removal of waste and restoration of site, (EPA s. 44) - Order for conformity with Act for waste disposal sites, (EPA s. 136) - Order for performance of environmental measures.

Government Publication Date: 1994-Jan 2015

Canadian Pulp and Paper:Private [PAP](#)

This information is part of the Pulp and Paper Canada Directory. The Directory provides a comprehensive listing of the locations of pulp and paper mills and the products that they produce.

Government Publication Date: 1999, 2002, 2004, 2005, 2009

Parks Canada Fuel Storage Tanks:Federal [PCFT](#)

Canadian Heritage maintains an inventory of all known fuel storage tanks operated by Parks Canada, in both National Parks and at National Historic Sites. The database details information on site name, location, tank install/removal date, capacity, fuel type, facility type, tank design and owner/operator.

*Government Publication Date: 1920-Jan 2005**

Pesticide Register:Provincial [PES](#)

The Ontario Ministry of Environment maintains a database of all manufacturers and vendors of registered pesticides.

Government Publication Date: 1988-Jun 2013

TSSA Pipeline Incidents:Provincial [PINC](#)

TSSA's Fuels Safety Program administers the Technical Standards & Safety Act 2000, providing fuel-related safety services associated with the safe transportation, storage, handling and use of fuels such as gasoline, diesel, propane, natural gas and hydrogen. Under this Act, TSSA regulates fuel suppliers, storage facilities, transport trucks, pipelines, contractors and equipment or appliances that use fuels. This database will include spills, strike and leaks from recorded by the TSSA.

Government Publication Date: June 2009-2014

Private and Retail Fuel Storage Tanks:Provincial [PRT](#)

The Fuels Safety Branch of the Ontario Ministry of Consumer and Commercial Relations maintained a database of all registered private fuel storage tanks and licensed retail fuel outlets. This database includes an inventory of locations that have gasoline, oil, waste oil, natural gas and/or propane storage tanks on their property. The MCCR no longer collects this information. This information is now collected by the Technical Standards and Safety Authority (TSSA).

*Government Publication Date: 1989-1996**

Permit to Take Water:Provincial [PTTW](#)

This is a subset taken from Ontario's Environmental Registry (EBR) database. It will include all PTTW's on the registry such as OWRA s. 34 - Permit to take water.

Government Publication Date: 1994-Jan 2015

Ontario Regulation 347 Waste Receivers Summary:Provincial [REC](#)

Part V of the Ontario Environmental Protection Act ("EPA") regulates the disposal of regulated waste through an operating waste management system or a waste disposal site operated or used pursuant to the terms and conditions of a Certificate of Approval or a Provisional Certificate of Approval. Regulation 347 of the Ontario EPA defines a waste receiving site as any site or facility to which waste is transferred by a waste carrier. A receiver of regulated waste is required to register the waste receiving facility. This database represents registered receivers of regulated wastes, identified by registration number, company name and address, and includes receivers of waste such as: landfills, incinerators, transfer stations, PCB storage sites, sludge farms and water pollution control plants. This information is a summary of all years from 1986 including the most currently available data.

Government Publication Date: 1986-2013

Record of Site Condition:

Provincial

RSC

The Record of Site Condition (RSC) is part of the Ministry of the Environment's Brownfields Environmental Site Registry. Protection from environmental cleanup orders for property owners is contingent upon documentation known as a record of site condition (RSC) being filed in the Environmental Site Registry. In order to file an RSC, the property must have been properly assessed and shown to meet the soil, sediment and groundwater standards appropriate for the use (such as residential) proposed to take place on the property. The Record of Site Condition Regulation (O. Reg. 153/04) details requirements related to site assessment and clean up.

RSCs filed after July 1, 2011 will also be included as part of the new (O.Reg. 511/09).

Government Publication Date: 1997-Sept 2001, Oct 2004-Mar 2015

Retail Fuel Storage Tanks:

Private

RST

This database includes an inventory of retail fuel outlet locations (including marinas) that have on their property gasoline, oil, waste oil, natural gas and / or propane storage tanks.

Government Publication Date: 1999-Jul 2014

Scott's Manufacturing Directory:

Private

SCT

Scott's Directories is a data bank containing information on over 200,000 manufacturers across Canada. Even though Scott's listings are voluntary, it is the most comprehensive database of Canadian manufacturers available. Information concerning a company's address, plant size, and main products are included in this database.

Government Publication Date: 1992-Mar 2011

Ontario Spills:

Provincial

SPL

This database identifies information such as location (approximate), type and quantity of contaminant, date of spill, environmental impact, cause, nature of impact, etc. Information from 1988-2002 was part of the ORIS (Occurrence Reporting Information System). The SAC (Spills Action Centre) handles all spills reported in Ontario. Regulations for spills in Ontario are part of the MOE's Environmental Protection Act, Part X.

Government Publication Date: 1988-Feb 2014

Wastewater Discharger Registration Database:

Provincial

SRDS

Information under this heading is combination of the following 2 programs. The Municipal/Industrial Strategy for Abatement (MISA) division of the Ontario Ministry of Environment maintained a database of all direct dischargers of toxic pollutants within nine sectors including: Electric Power Generation; Mining; Petroleum Refining; Organic Chemicals; Inorganic Chemicals; Pulp & Paper; Metal Casting; Iron & Steel; and Quarries. All sampling information is now collected and stored within the Sample Result Data Store (SRDS).

Government Publication Date: 1990-2011

Anderson's Storage Tanks:

Private

TANK

The information provided in this database was collected by examining various historical documents, which identified the location of former storage tanks, containing substances such as fuel, water, gas, oil, and other various types of miscellaneous products. Information is available in regard to business operating at tank site, tank location, permit year, permit & installation type, no. of tanks installed & configuration and tank capacity. Data contained within this database pertains only to the city of Toronto and is not warranted to be complete, exhaustive or authoritative. The information was collected for research purposes only.

*Government Publication Date: 1915-1953**

Transport Canada Fuel Storage Tanks:

Federal

TCFT

List of fuel storage tanks currently or previously owned or operated by Transport Canada. This inventory also includes tanks on The Pickering Lands, which refers to 7,530 hectares (18,600 acres) of land in Pickering, Markham, and Uxbridge owned by the Government of Canada since 1972; properties on this land has been leased by the government since 1975, and falls under the Site Management Policy of Transport Canada, but is administered by Public Works and Government Services Canada. This inventory provides information on the site name, location, tank age, capacity and fuel type.

Government Publication Date: 1970-Mar 2007

TSSA Variances for Abandonment of Underground Storage Tanks:

Provincial

[VAR](#)

The TSSA, Under the Liquid Fuels Handling Code and the Fuel Oil Code, all underground storage tanks must be removed within two years of disuse. If removal of a tank is not feasible, you may apply to seek a variance from this code requirement. This is a list of all variances granted for abandoned tanks.

Government Publication Date: Current to Nov 2014

Waste Disposal Sites - MOE CA Inventory:

Provincial

[WDS](#)

The Ontario Ministry of Environment, Waste Management Branch, maintains an inventory of known open (active or inactive) and closed disposal sites in the Province of Ontario. Active sites maintain a Certificate of Approval, are approved to receive and are receiving waste. Inactive sites maintain Certificate(s) of Approval but are not receiving waste. Closed sites are not receiving waste. The data contained within this database was compiled from the MOE's Certificate of Approval database. Locations of these sites may be cross-referenced to the Anderson database described under ERIS's Private Source Database section, by the CA number. All new Environmental Compliance Approvals handed out after Oct 31, 2011 for Waste Disposal Sites will still be found in this database.

Government Publication Date: 1970-Mar 2015

Waste Disposal Sites - MOE 1991 Historical Approval Inventory:

Provincial

[WDSH](#)

In June 1991, the Ontario Ministry of Environment, Waste Management Branch, published the "June 1991 Waste Disposal Site Inventory", of all known active and closed waste disposal sites as of October 30st, 1990. For each "active" site as of October 31st 1990, information is provided on site location, site/CA number, waste type, site status and site classification. For each "closed" site as of October 31st 1990, information is provided on site location, site/CA number, closure date and site classification. Locations of these sites may be cross-referenced to the Anderson database described under ERIS's Private Source Database section, by the CA number.

*Government Publication Date: Up to Oct 1990**

Water Well Information System:

Provincial

[WWIS](#)

This database describes locations and characteristics of water wells found within Ontario in accordance with Regulation 903. It includes such information as coordinates, construction date, well depth, primary and secondary use, pump rate, static water level, well status, etc. Also included are detailed stratigraphy information, approximate depth to bedrock and the approximate depth to the water table.

Government Publication Date: 1955-Mar 2014

Definitions

Database Descriptions: This section provides a detailed explanation for each database including: source, information available, time coverage, and acronyms used. They are listed in alphabetic order.

Detail Report: This is the section of the report which provides the most detail for each individual record. Records are summarized by location, starting with the project property followed by records in closest proximity.

Distance: The distance value is the distance between plotted points, not necessarily the distance between the sites' boundaries". All values are an approximation.

Direction: The direction value is the compass direction of the site in respect to the project property and/or center point of the report.

Elevation: The elevation value is taken from the location at which the records for the site address have been plotted. All values are an approximation. Source: Google Elevation API.

Executive Summary: This portion of the report is divided into 3 sections:

'Report Summary'- Displays a chart indicating how many records fall on the project property and, within the report search radii.

'Site Report Summary'-Project Property'- This section lists all the records which fall on the project property. For more details, see the 'Detail Report' section.

'Site Report Summary-Surrounding Properties'- This section summarizes all records on adjacent properties, listing them in order of proximity from the project property. For more details, see the 'Detail Report' section.

Map Key: The map key number is assigned according to closest proximity from the project property. Map Key numbers always start at #1. The project property will always have a map key of '1' if records are available. If there is a number in brackets beside the main number, this will indicate the number of records on that specific property. If there is no number in brackets, there is only one record for that property.

The symbol and colour used indicates 'elevation': the red inverted triangle will dictate 'ERIS Sites with Lower Elevation', the yellow triangle will dictate 'ERIS Sites with Higher Elevation' and the orange square will dictate 'ERIS Sites with Same Elevation.'

Unplottables: These are records that could not be mapped due to various reasons, including limited geographic information. These records may or may not be in your study area, and were included as reference.