

Appendix B

Public Consultation

Appendix B1. Project Notices

- Notice of Public Meeting and Proposal
- Notice of Draft Site Plan
- Notice of Draft REA Reports and
Second Public Meeting

Appendix B2. Public Correspondence: Emails, Letters and Communication Records

Appendix B3. Public Meetings

- Public Meeting #1
September 23, 2014
- Public Meeting #2
May 20, 2015

Appendix B1. Project Notices

- **Notice of Public Meeting and Proposal**
- **Notice of Draft Site Plan**
- **Notice of Draft REA Reports and Second Public Meeting**

Notice of Public Meeting and Proposal

NOTICE OF PUBLIC MEETING AND PROPOSAL

By SP Belle River to Engage in a Renewable Energy Project

Project Names: Belle River Wind Project (the "Project")

Project Location: Town of Lakeshore, Essex County, Ontario

Dated at: Town of Lakeshore, Essex County this the 18th of August, 2014

SP Belle River Wind, LP, by its general partner, SP Belle River Wind GP, Inc. (SP Belle River) is planning to engage in a renewable energy project in respect of which the issuance of a renewable energy approval ("REA") is required. SP Belle River (the "Developer") is a joint venture limited partnership owned by affiliates of Pattern Renewable Holdings Canada, ULC (Pattern Energy) and Samsung Renewable Energy, Inc. (Samsung Renewable Energy). The distribution of this notice of a proposal to engage in this renewable energy project and the Project itself are subject to the provisions of the *Environmental Protection Act* (the "Act") Part V.0.1 and Ontario Regulation 359/09 (the "Regulation"). This notice must be distributed in accordance with section 15 of the Regulation prior to an application being submitted and assessed for completeness by the Ministry of the Environment and Climate Change.

Notification of First Public Meeting:

Date: September 23, 2014

Time: 5:00 p.m. to 8:00 p.m.

Location: Knights of Columbus Club
1303 County Road 22, Belle River, ON N0R 1A0

Project Description:

Pursuant to the Act and Regulation, the facility comprising the Project is considered to be a Wind Facility, Class 4. If approved, this facility would have a total nameplate capacity of up to 150 MW. The project location is shown in the map below. The Project is being proposed in accordance with the requirements of the Act and Regulation.

Documents for Public Review:

The Draft Project Description Report (the "Draft PDR") describes the proposed facility, including site preparation and construction, operations and maintenance, and decommissioning of wind turbines, access roads, collection lines, a transmission line and electrical substation, and other ancillary components. Site plan and layout options for the Project are currently being developed by the Developer and will be finalized during the REA process. In accordance with the Regulation, a hard copy of the Draft PDR will be made available for public inspection starting on Thursday August 21st, 2014 at the Town of Lakeshore Municipal Office (419 Notre Dame Street, Belle River) and the Lakeshore Branch of the Essex County Library System (304 Rourke Line Road, Belle River). The Draft PDR will also be available on the Project website: www.belleriverwind.com.

Project Contacts and Information:

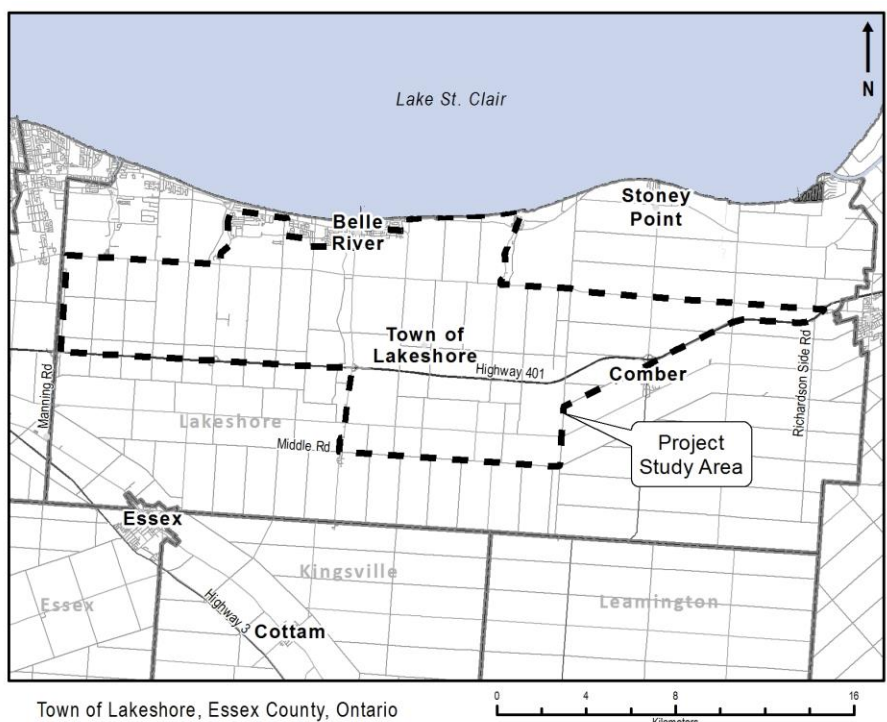
To learn more about the Project or to provide feedback, please contact:

Project Email: info@belleriverwind.com

Jody Law, Project Developer
Pattern Renewable Holdings Canada ULC
100 Simcoe Street
Toronto, ON M5H 3G2
Phone: (416) 263-8029

Brian Edwards, Project Developer
Samsung Renewable Energy Inc.
55 Standish Court
Mississauga, ON L5R 4B2
Phone: (905) 501-5667

Marc Rose, Consultant Project Manager
AECOM
105 Commerce Valley Drive West
Markham, ON L3T 7W3
Phone: (905) 747-7793



AVIS DE PROJET ET RÉUNION PUBLIQUE

Projet d'énergie renouvelable de SP Belle River

Nom du Projet: Projet Belle River Wind (le «Projet»)

Localisation: Ville de Lakeshore, Comté d'Essex, Ontario

Date: 18 août 2014

SP Belle River Wind LP, au travers de son associé SP Belle River Wind GP, Inc. (SP Belle River), cherche à développer un projet d'énergie renouvelable pour lequel une autorisation de projet d'énergie renouvelable («APER») est requise. SP Belle River (le «Promoteur») est une société en commandite détenue par Pattern Renewable Holdings Canada, ULC (Pattern Development) et Samsung Renewable Energy, Inc. (Samsung Renewable Energy). La distribution du présent avis de projet de même que le développement du Projet d'énergie renouvelable sont soumis aux exigences de la section V.0.1 de la *Loi sur la protection de l'environnement* (la «Loi») et du Règlement de l'Ontario 359/09 (le «Règlement»). Cet avis doit être distribué conformément à la section 15 du Règlement avant que la demande soit présentée et évaluée par le Ministère de l'Environnement et de l'Action en matière de changement climatique.

Notification de la première réunion publique:

Date: 23 septembre 2014
Heure: 17:00 à 20:00
Lieu: Knights of Columbus Club
1303 County Road 22, Belle River, ON N0R 1A0

Description du Projet:

Conformément à la Loi et au Règlement, l'installation considérée par le Projet est un parc éolien de classe 4. Si elle est approuvée, cette installation aura une puissance nominale maximale de 150 MW. L'emplacement du Projet est illustré sur la carte ci-dessous. Le Projet proposé est conforme aux exigences de la Loi et du Règlement.

Documents pour l'examen public:

Le Rapport préliminaire de description de Projet (le «RDP préliminaire») présente l'installation proposée, incluant la préparation et la construction du site de même que l'exploitation, l'entretien et le démantèlement des éoliennes, des routes d'accès, des conduites de collecte, de la ligne de transmission, du poste électrique et des autres composantes auxiliaires du Projet. Le plan du site et les différentes options d'aménagement du Projet sont présentement développés par le Promoteur et seront finalisés pendant le processus d'APER. Conformément au Règlement, une copie papier du RDP préliminaire sera mise à la disposition du public pour consultation à partir du Jeudi 21 août 2014 au bureau municipal de la Ville de Lakeshore (419 Notre Dame Street, Belle River) et à la succursale Lakeshore du réseau de bibliothèque du Comté d'Essex (304 Rourke Line Road, Belle River). Le RDP préliminaire sera aussi disponible sur le site internet du Projet : www.belleriverwind.com. Les documents présentés lors des réunions publiques seront disponibles en anglais.

Contact et information sur le Projet:

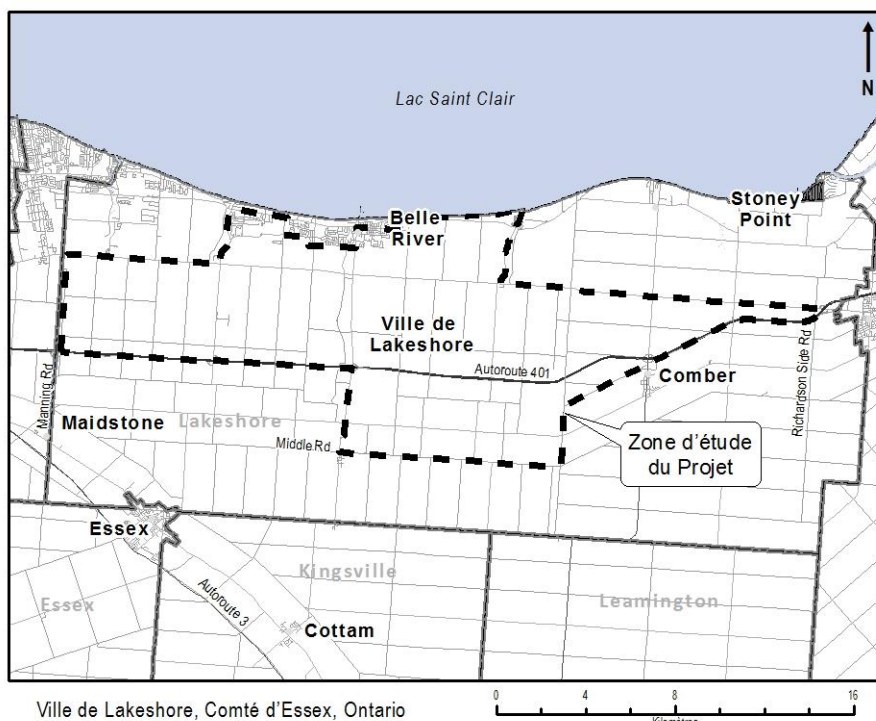
Pour en savoir davantage sur le Projet ou pour partager vos commentaires, veuillez contacter :

Courriel : info@belleriverwind.com

Jody Law, Promoteur du Projet
Pattern Renewable Holdings Canada ULC
100 Simcoe Street
Toronto, ON M5H 3G2
Tél : (416) 263-8029

Brian Edwards, Promoteur du Projet
Samsung Renewable Energy Inc.
55 Standish Court
Mississauga, ON L5R 4B2
Tél : (905) 501-5667

Marc Rose, Consultant / Chef de Projet
AECOM
105 Commerce Valley Drive West
Markham, ON L3T 7W3
Tél : (905) 747-7793



OFA is helping build the Ontario bioeconomy... Continued from Page 5

Due to transportation logistics and feedstock availability, other regions of the province will be engaged. That's where we know OFA has an important role to play to ensure Ontario farmers can be ready to take part in the next wave of the bioeconomy.

The OFA is working with government on several fronts to bring bioeconomy

opportunities closer to Ontario farmers. We're ensuring the rules and regulations established for bio-based companies that are looking to set up shop in Ontario are conducive to new business. We work with government policymakers in Queen's Park and on Parliament Hill on policy that ensures Ontario farmers are recognized for their

role in adding value to the biomass marketplace.

We need to work with our members about what and where the opportunities are for getting in on the bioeconomy. We will be stepping up our communication to OFA members about the new markets that are opening up in this new segment of

Ontario's economy.

Agriculture runs on innovation. The opportunities opening up for our sector in a bioeconomy are further proof of the inherent ability of agriculture to find and fill the needs of our citizens for food, fibre, fuel, jobs and consumer materials.

END OF SUMMER BLOWOUT!

August 27th - 30th

UP TO **75%** OFF on Selected Items!

Support Local - 2 Girls Gifts is proud to carry a great selection of locally made items.

HOURS:
Wed - Fri 10am - 5pm
Sat 10am - 5pm

519.776.9831
16 Talbot Street, North

2 Girls Gifts

ESSEX JUNIOR BASEBALL ASSOCIATION

NOW ACCEPTING TRAVEL COACH APPLICATIONS FOR THE 2015 SEASON:
Deadline: September 4, 2014

- BANTAM (Born 2001-2000)
- MIDGET (Born 1999-1997)

Applications for interested parties are available at www.leaguelineup.com/emba

Or Contact for further information

Wayne Nordin - EMBA Travel Convenor 226-783-1067 wnordin@gmail.com
Joe Grondin - President 519-776-9111 joe.grondin@essexjuniorbaseball.com

ESSEX FREE PRESS

Get the word out.
Advertise here and get results.

16 Centre St., Essex 519.776.4268
www.essexfreepress.com

Talbot Street Animal Hospital

Dr. R. Lobana & Dr. B. Garg
New Patients ALWAYS Welcome

DID YOU HEAR?
We have slashed our prices on all dog and cat spays & neuters.

CAT SPAYS & NEUTERS \$125 + tax
(includes anaesthesia & surgery)

DOG SPAYS & NEUTERS \$199 + tax
(includes anaesthesia & surgery)

Also add vaccinations, another microchipping for a discounted price, if done at the same time as surgery.

For More Information Please Call Us!

519-776-7797
48 Talbot St. S., Essex • 24 HOUR ON CALL EMERGENCY
Office Hours: Monday-Friday 8 AM - 6 PM • Saturday 9 AM - 1 PM

NOTICE OF PUBLIC MEETING AND PROPOSAL By SP Belle River to Engage in a Renewable Energy Project

Project Name: Belle River Wind Project (the "Project")

Project Location: Town of Lakeshore, Essex County, Ontario

Dated at: Town of Lakeshore, Essex County this the 18th of August, 2014

SP Belle River Wind, LP, by its general partner, SP Belle River Wind GP, Inc. (SP Belle River) is planning to engage in a renewable energy project in respect of which the issuance of a renewable energy approval ("REA") is required. SP Belle River (the "Developer") is a joint venture limited partnership owned by affiliates of Pattern Renewable Holdings Canada, ULC (Pattern Energy) and Samsung Renewable Energy, Inc. (Samsung Renewable Energy). The distribution of this notice of a proposal to engage in this renewable energy project and the Project itself are subject to the provisions of the *Environmental Protection Act* (the "Act") Part V.0.1 and Ontario Regulation 359/09 (the "Regulation"). This notice must be distributed in accordance with section 15 of the Regulation prior to an application being submitted and assessed for completeness by the Ministry of the Environment and Climate Change.

Notification of First Public Meeting:

Date: September 23, 2014
Time: 5:00 p.m. to 8:00 p.m.
Location: Knights of Columbus Club
1303 County Road 22, Belle River, ON N0R 1A0

Project Description:

Pursuant to the Act and Regulation, the facility comprising the Project is considered to be a Wind Facility, Class 4. If approved, this facility would have a total nameplate capacity of up to 150 MW. The project location is shown in the map below. The Project is being proposed in accordance with the requirements of the Act and Regulation.

Documents for Public Review:

The Draft Project Description Report (the "Draft PDR") describes the proposed facility, including site preparation and construction, operations and maintenance, and decommissioning of wind turbines, access roads, collection lines, a transmission line and electrical substation, and other ancillary components. Site plan and layout options for the Project are currently being developed by the Developer and will be finalized during the REA process. In accordance with the Regulation, a hard copy of the Draft PDR will be made available for public inspection starting on Thursday, August 21st, 2014 at the Town of Lakeshore Municipal Office (419 Notre Dame Street, Belle River) and the Lakeshore Branch of the Essex County Library System (304 Rourke Line Road, Belle River). The Draft PDR will also be available on the Project website: www.belleriverwind.com.

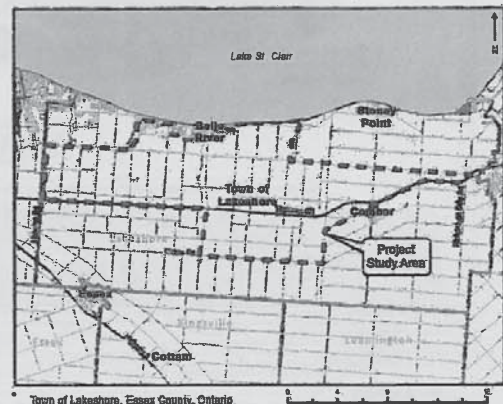
Project Contacts and Information:
To learn more about the Project or to provide feedback, please contact:

Project Email: info@belleriverwind.com

Jody Law, Project Developer
Pattern Renewable Holdings Canada ULC
100 Simcoe Street
Toronto, ON M5H 3G2
Phone: (416) 263-8029

Brian Edwards, Project Developer
Samsung Renewable Energy Inc.
55 Standish Court
Mississauga, ON L5R 4B2
Phone: (905) 501-5667

Marc Rose, Consultant Project Manager
AECOM
105 Commerce Valley Drive West
Markham, ON L3T 7W3
Phone: (905) 747-7793





thehub: sponsorship by:

FOODLAND.

Fresh food. Friendly neighbours

181 Talbot St. S., Essex

519-776-4255

Harrow United Church

submitted by Larry Anderson

On Sunday, August 31st, Harrow United Church will worship in the Harrow Fair - Ecumenical Church Service at 9:30 am. This will be held at the Main Stage - Harrow Fairground.

The Harrow United Church - AOTS Club members have been working diligently in preparation for the annual Harrow Fair Pie Bake. We look forward to seeing everyone for some delicious home baked pie and refreshments this weekend.

We offer our sincere congratulations to Rev. Don and Gladys on the recent celebration of their 65th Wedding Anniversary!

Our thoughts, prayers and best wishes are extended to all students, teachers and parents as a new school year begins. We are sure that the year brings with it many opportunities to meet new friends along with many meaningful learning and growing experiences!

To learn more about the faith community of Harrow United Church, please visit us at www.harrowunited.org

Essex Christian Reformed Church

submitted by Beverley Van Huizen

We would like to extend an invitation to you and your family to attend our Sunday morning worship service beginning at 10:00 am as we welcome Pastor Aaron Thompson, who will be leading us in worship. Nursery supervision is provided. Do plan to stay afterwards for a time of fellowship with coffee or tea.

All are invited to our Free Movie Event on Friday, August 29th where we will be featuring "Epic". Free snacks and drinks are available. Doors open at 6:00 pm and the movie begins at 7:30 pm. Everyone is welcome! All children under 18 must be accompanied by an adult.

Mark your calendars - GEMS and Cadets begin their season on Monday, September 8 at 6:30 - 8:00 pm.

Visit us online for service times and directions or just to listen to a sermon or two. www.essexcr.ca

Salvation Army Essex Community Church News

submitted by Carolyn Barnett

Summer is drawing to an end, and the fall programs and activities will start soon. Watch this column for the start up dates for SA Connections, Messy Church and Bible Study.

Thanks to all who supported our Thrift Store BBQs every Friday in July and August. All proceeds went to the Salvation Army Food Bank. We are always grateful to accept your donations of non perishable items for the Food Bank.

Our Community Care Ministry starts up again in Sept. with our Elder Lodge service on Wed., Sept. 3rd at 10:30 a.m. and Country

Village in Woodlee on Thurs. Sept. 4th at 6:30 p.m. We can always use volunteers at these services and all are welcome to attend.

Join us every Sunday at 11 a.m. for Family Worship. On Sunday Aug. 31st. Our guest speakers will be Fraser and Marilyn Lear from Learning Corps.

"The secret of happiness is reverence for all life!"

Essex United Church

Watch for instructions for the coming survey.

We are looking for young people to help with the Sunday

Continued on Page 20

**NOTICE OF PUBLIC MEETING AND PROPOSAL
By SP Belle River to Engage in a Renewable Energy Project**

Project Names: Belle River Wind Project (the "Project")

Project Location: Town of Lakeshore, Essex County, Ontario

Dated at: Town of Lakeshore, Essex County this the 18th of August, 2014

SP Belle River Wind, LP, by its general partner, SP Belle River Wind GP, Inc. (SP Belle River) is planning to engage in a renewable energy project in respect of which the issuance of a renewable energy approval ("REA") is required. SP Belle River (the "Developer") is a joint venture limited partnership owned by affiliates of Pattern Renewable Holdings Canada, ULC (Pattern Energy) and Samsung Renewable Energy, Inc. (Samsung Renewable Energy). The distribution of this notice of a proposal to engage in this renewable energy project and the Project itself are subject to the provisions of the *Environmental Protection Act* (the "Act") Part V.0.1 and Ontario Regulation 359/09 (the "Regulation"). This notice must be distributed in accordance with section 15 of the Regulation prior to an application being submitted and assessed for completeness by the Ministry of the Environment and Climate Change.

Notification of First Public Meeting:

Date: September 23, 2014
Time: 5:00 p.m. to 8:00 p.m.
Location: Knights of Columbus Club
1303 County Road 22, Belle River, ON N0R 1A0

Project Description:

Pursuant to the Act and Regulation, the facility comprising the Project is considered to be a Wind Facility, Class 4. If approved, this facility would have a total nameplate capacity of up to 150 MW. The project location is shown in the map below. The Project is being proposed in accordance with the requirements of the Act and Regulation.

Documents for Public Review:

The Draft Project Description Report (the "Draft PDR") describes the proposed facility, including site preparation and construction, operations and maintenance, and decommissioning of wind turbines, access roads, collection lines, a transmission line and electrical substation, and other ancillary components. Site plan and layout options for the Project are currently being developed by the Developer and will be finalized during the REA process. In accordance with the Regulation, a hard copy of the Draft PDR will be made available for public inspection starting on Thursday, August 21st, 2014 at the Town of Lakeshore Municipal Office (419 Notre Dame Street, Belle River) and the Lakeshore Branch of the Essex County Library System (304 Rourke Line Road, Belle River). The Draft PDR will also be available on the Project website: www.belleriverwind.com.

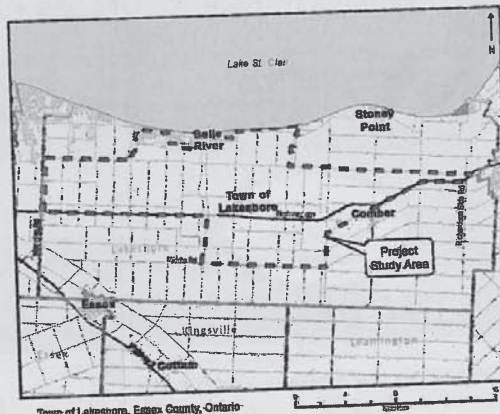
Project Contacts and Information:
To learn more about the Project or to provide feedback, please contact:

Project Email: info@belleriverwind.com

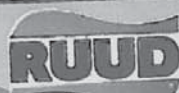
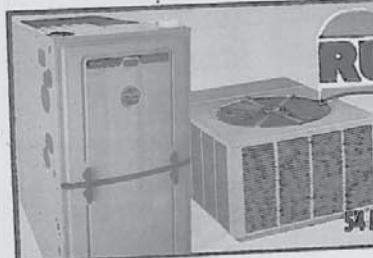
Jody Law, Project Developer
Pattern Renewable Holdings Canada ULC
100 Simcoe Street
Toronto, ON M5H 3G2
Phone: (416) 263-8029

Brian Edwards, Project Developer
Samsung Renewable Energy Inc.
55 Standish Court
Mississauga, ON L5R 4B2
Phone: (905) 501-5887

Marc Rose, Consultant Project Manager
AECOM
105 Commerce Valley Drive West
Markham, ON L3T 7W3
Phone: (905) 747-7793



Wheat Seed
Cleaned & Treated
• Pre-Harvest Savings •
Phone 519-738-3234
SALTER FARMS



STAY COOL & SAVE

Up to \$1000 in rebates
on eligible systems

Call for free estimate. Financing Available O.A.C.

54 Mill St. E., Kingsville • 519-733-5832 • warkentinplumbing.ca

WARKENTIN

PLUMBING • HEATING • AIR CONDITIONING
GEOTHERMAL • REFRIGERATION
COMMERCIAL RESIDENTIAL

serving Lakeshore

Lakeshore News

Serving the community since 1948.

1116 Lesperance Road · Tecumseh · Ontario · N8N 1X2
PUBLISHED EVERY THURSDAY



how to reach us
519-735-2080
by fax **519-735-2082**

administration · circulation

Eunice Paradise · Administration · 519-735-2080 ext. 111
EParadise@postmedia.com
Amer Yahia · Administration · 519-735-2080 ext. 112
AYahia@postmedia.com

advertising

Carol Wiens · 519-735-2080 ext. 127
CWiens@postmedia.com

editorial

Matt Weingarden · 519-735-2080 ext. 128
MWeingarden@postmedia.com

general manager

Bob Thwaites · 519-735-2080 ext. 123
BThwaites@postmedia.com

deadlines

Display ads · Monday 4:30 pm
Classifieds · Friday 4:30 pm

letters to the editor

Lakeshore News welcomes your letters to the editor that are of interest to our residents. However, we reserve the right to edit for grammar, clarity and length or to reject letter over matters of libel, legality, taste or style. Letters must be signed with a daytime phone number of the writer attached.

Please mail your letters to:

Lakeshore News
1116 Lesperance Road, Tecumseh, ON N8N 1X2
or email: MWeingarden@postmedia.com

subscription rates

Province to invest in infrastructure

Ontario is providing small, rural and northern municipalities with stable, annual funding to build and repair critical infrastructure and help to create jobs across the province.

Premier Kathleen Wynne and Jeff Leal, Minister of Agriculture, Food and Rural Affairs, were in St. Thomas to announce that the new Ontario Community Infrastructure Fund will provide \$100 million per year in funding for critical road, bridge, water and wastewater projects.

Half of the funding for the initiative will be allocated annually using a fair and transparent formula, which recognizes that municipalities have different infrastructure and fiscal needs. The remaining \$50 million will flow through an application-based process, allowing municipalities to continue partnering with

the province to invest in critical infrastructure projects that will create jobs and support growth.

The Premier also announced that Ontario municipalities can now propose infrastructure projects to be considered for support through the Small Communities Fund. Through this fund, Ontario and the federal government will each provide \$272 million to support projects in municipalities with populations less than 100,000.

The new Ontario Community Infrastructure Fund is part of the government's comprehensive plan for a strong Ontario that builds people's talents and skills, builds a more dynamic business environment, builds new infrastructure and builds a more secure retirement for Ontarians.

NOTICE OF PUBLIC MEETING AND PROPOSAL By SP Belle River to Engage in a Renewable Energy Project

Project Names: Belle River Wind Project (the "Project")

Project Location: Town of Lakeshore, Essex County, Ontario

Dated at: Town of Lakeshore, Essex County this the 18th of August, 2014

SP Belle River Wind, LP, by its general partner, SP Belle River Wind GP, Inc. (SP Belle River) is planning to engage in a renewable energy project in respect of which the issuance of a renewable energy approval ("REA") is required. SP Belle River (the "Developer") is a joint venture limited partnership owned by affiliates of Pattern Renewable Holdings Canada, ULC (Pattern Energy) and Samsung Renewable Energy, Inc. (Samsung Renewable Energy). The distribution of this notice of a proposal to engage in this renewable energy project and the Project itself are subject to the provisions of the *Environmental Protection Act* (the "Act") Part V.0.1 and Ontario Regulation 359/09 (the "Regulation"). This notice must be distributed in accordance with section 15 of the Regulation prior to an application being submitted and assessed for completeness by the Ministry of the Environment and Climate Change.

Notification of First Public Meeting:

Date: September 23, 2014

Time: 5:00 p.m. to 8:00 p.m.

Location: Knights of Columbus Club
1303 County Road 22, Belle River, ON N0R 1A0

Project Description:

Pursuant to the Act and Regulation, the facility comprising the Project is considered to be a Wind Facility, Class 4. If approved, this facility would have a total nameplate capacity of up to 150 MW. The project location is shown in the map below. The Project is being proposed in accordance with the requirements of the Act and Regulation.

Documents for Public Review:

The Draft Project Description Report (the "Draft PDR") describes the proposed facility, including site preparation and construction, operations and maintenance, and decommissioning of wind turbines, access roads, collection lines, a transmission line and electrical substation, and other ancillary components. Site plan and layout options for the Project are currently being developed by the Developer and will be finalized during the REA process. In accordance with the Regulation, a hard copy of the Draft PDR will be made available for public inspection starting on Thursday August 21st, 2014 at the Town of Lakeshore Municipal Office (419 Notre Dame Street, Belle River) and the Lakeshore Branch of the Essex County Library System (304 Rourke Line Road, Belle River). The Draft PDR will also be available on the Project website: www.belleriverwind.com.

Project Contacts and Information:

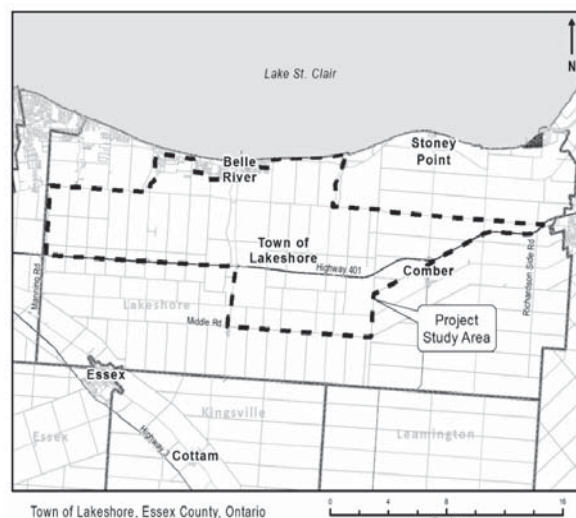
To learn more about the Project or to provide feedback, please contact:

Project Email: info@belleriverwind.com

Jody Law, Project Developer
Pattern Renewable Holdings Canada ULC
100 Simcoe Street
Toronto, ON M5H 3G2
Phone: (416) 263-8029

Brian Edwards, Project Developer
Samsung Renewable Energy Inc.
55 Standish Court
Mississauga, ON L5R 4B2
Phone: (905) 501-5667

Marc Rose, Consultant Project Manager
AECOM
105 Commerce Valley Drive West
Markham, ON L3T 7W3
Phone: (905) 747-7793



Les élections sont municipales et scolaires

Daniel Richard

En date du 19 août, on pouvait recenser quelque 50 candidats pour les élections mu-

nicipales qui se tiendront le 27 octobre prochain. Du côté des élections scolaires, tant du côté du Conseil catholique Providence (11 conseillers) que de celui du Conseil Via-

monde (12 conseillers), tout le monde se retrouve en élections. Généralement, on ne se bouscule pas aux portes pour

devenir conseiller scolaire et une bonne part des membres actuels ont plus d'un mandat d'expérience. Pourtant, il y a plusieurs défis intéressants auxquels les conseillers doivent se frotter à ce moment-ci. Par exemple, le dossier de l'évolution démographique qui entraîne une demande croissante pour des places dans les écoles francophones se traduit, concrètement, par des projets de construction ou d'agrandissement qui témoignent de la vitalité des deux conseils francophones de la région.

Celui de l'inclusion de plus en plus importante des outils de nouvelles technologies et d'information est non seulement lié à des investissements mais, également, à une redéfinition des modes de transfert de connaissances dans les écoles. Tous les dossiers liés à l'intimidation (en personne ou sur le Net) demandent une certaine attention sans oublier les efforts à consentir pour continuer à améliorer les résultats des élèves en littératie et en numérique.

Du côté municipal, le départ annoncé du maire Eddie Francis a suscité sept candidatures, certaines prévisibles et d'autres venues, semble-t-il, du champ gauche. Le maire sortant laisse derrière lui une administration modernisée et surtout, un mode de travail, du côté du conseil,

axé sur le travail d'équipe et l'adhésion aux décisions retenues. En trois mandats, globalement avec une équipe qui a peu changé, le maire Francis est entre autres arrivé à éviter les hausses de taxes (mais pas celles des tarifs), à attirer des événements internationaux à Windsor tout en diminuant la dette et à doter la ville de nouveaux équipements de loisirs. Les attentes envers le prochain titulaire du titre sont donc élevées. Une quarantaine de personnes qui proposent leurs services à titre de conseillers municipaux est en soi une indication de l'intérêt renouvelé pour le palier de gouvernement municipal. La pose d'affiches a débuté et les candidats ont commencé à patrouiller les rues pour rencontrer leurs électeurs.

Les personnes intéressées à déposer leur candidature pour les élections municipales ou scolaires ont jusqu'au 11 septembre prochain pour le faire auprès du greffier de la Ville, bureau 203 à l'Hôtel de Ville de Windsor. Les candidats (ou leurs agents) doivent déposer le formulaire d'intention signé en personne sans oublier d'inclore un chèque de 200 \$ (pour le poste de maire) ou de 100 \$ (pour les postes de conseillers). L'annonce des mises en nominations et élections par acclamation sera faite le 12 septembre.

AVIS DE PROJET ET RÉUNION PUBLIQUE Projet d'énergie renouvelable de SP Belle River

Nom du Projet : Projet Belle River Wind (le « Projet »)
Localisation : Ville de Lakeshore, Comté d'Essex, Ontario
Date : 18 août 2014

SP Belle River Wind LP, au travers de son associé SP Belle River Wind GP, Inc. (SP Belle River), cherche à développer un projet d'énergie renouvelable pour lequel une autorisation de projet d'énergie renouvelable (« APER ») est requise. SP Belle River (le « Promoteur ») est une société en commandite détenue par Pattern Renewable Holdings Canada, ULC (Pattern Development) et Samsung Renewable Energy, Inc. (Samsung Renewable Energy). La distribution du présent avis de projet de même que le développement du Projet d'énergie renouvelable sont soumis aux exigences de la section V.O.1 de la Loi sur la protection de l'environnement (la « Loi ») et du Règlement de l'Ontario 359/09 (le « Règlement »). Cet avis doit être distribué conformément à la section 15 du Règlement avant que la demande soit présentée et évaluée par le Ministère de l'Environnement et de l'Action en matière de changement climatique.

Notification de la première réunion : **Date :** 23 septembre
Heure : 17 h à 20 h
Lieu : Knights of Columbus Club
1303 County Road 22, Belle River, ON N0R 1A0

Description du Projet :

Conformément à la Loi et au Règlement, l'installation considérée par le Projet est un parc éolien de classe 4. Si elle est approuvée, cette installation aura une puissance nominale maximale de 150 MW. L'emplacement du Projet est illustré sur la carte ci-dessous. Le Projet proposé est conforme aux exigences de la Loi et du Règlement.

Documents pour l'examen public :

Le Rapport préliminaire de description de Projet (le « RDP préliminaire ») présente l'installation proposée, incluant la préparation et la construction du site de même que l'exploitation, l'entretien et le démantèlement des éoliennes, des routes d'accès, des conduites de collecte, de la ligne de transmission, du poste électrique et des autres composantes auxiliaires du Projet. Le plan du site et les différentes options d'aménagement du Projet sont présentement développés par le Promoteur et seront finalisés pendant le processus d'APER. Conformément au Règlement, une copie papier du RDP préliminaire sera mise à la disposition du public pour consultation à partir du Jeudi 21 août 2014 au bureau municipal de la Ville de Lakeshore (419 Notre Dame Street, Belle River) et à la succursale Lakeshore du réseau de bibliothèque du Comté d'Essex (304 Rourke Line Road, Belle River). Le RDP préliminaire sera aussi disponible sur le site Internet du Projet : www.belleriverwind.com. Les documents présentés lors des réunions publiques seront disponibles en anglais.

Contact et information sur le Projet :

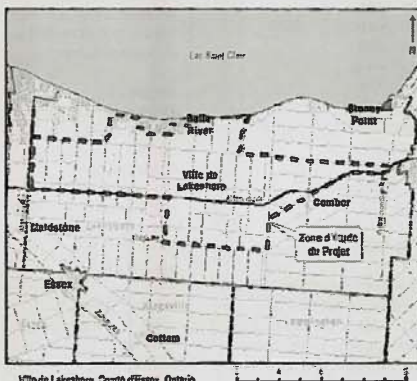
Pour en savoir davantage sur le Projet ou pour partager vos commentaires, veuillez contacter :

Courriel : info@belleriverwind.com

Jody Law, Promoteur du Projet
Pattern Renewable Holdings Canada ULC
100 Simcoe Street
Toronto, ON M5H 3G2
Tél : (416) 263-8029

Brian Edwards, Promoteur du Projet
Samsung Renewable Energy Inc.
55 Standish Court
Mississauga, ON L5R 4B2
Tél : (905) 501-5667

Marc Rose, Consultant / Chef de Projet
AECOM
105 Commerce Valley Drive West
Markham, ON L3T 7W3
Tél : (905) 747-7793



La Chorale du tricentenaire vous invite



(D.R.) C'est le 15 septembre prochain que les membres de la Chorale du Tricentenaire se retrouveront pour la première répétition d'une nouvelle saison pour cet ensemble qui a déjà à son actif deux albums. Comme par les années passées, les répétitions se dérouleront à l'école l'Essex à 19 h. Toute personne intéressée à se joindre la chorale peut le faire en se présentant à la répétition.

Notice of Draft Site Plan



NOTICE OF DRAFT SITE PLAN

for a Renewable Energy Project in accordance with Section 54.1
of Ontario Regulation 359/09

Project Name: Belle River Wind Project (the "Project")

Project Location: The Project is located in the Municipality of the Town of Lakeshore, Essex County, Ontario

Notice Dated at: Town of Lakeshore, Essex County this, the 4th of March, 2015

Applicant: The Project is being proposed by SP Belle River Wind, LP, by its general partner, SP Belle River Wind, GP Inc. ("Belle River Wind"). Belle River Wind is a joint venture limited partnership owned by affiliates of Pattern Renewable Holdings Canada, ULC ("Pattern Development") and Samsung Renewable Energy, Inc. ("Samsung Renewable Energy").

Project Description: As a renewable energy facility, the Project is subject to the provisions of the *Environmental Protection Act* (the "Act") Part V.0.1 and Ontario Regulation 359/09 (the "Regulation") and requires a Renewable Energy Approval (REA) prior to construction. This notice is being distributed in accordance with section 54.1 of the Regulation prior to an application being submitted to the Ministry of the Environment and Climate Change (MOECC).

If approved, the Project would have a total maximum nameplate capacity of up to 100 megawatts (MW). As identified in the Act and Regulation, the Project is considered to be a Class 4 wind facility. This project is being proposed in accordance with the requirements of the Act and Regulation. The location of key Project components is shown in the map below. Additional information about the Project, including a Draft Project Description Report, is available online at www.belleriverwind.com.

Draft Site Plan: A Draft Site Plan has been prepared to identify and describe the location of key Project components, including wind turbines and the collector substation. By this Notice, pursuant to the Regulation, the Project must consider noise receptors as defined by the Act that existed as of March 3, 2015.

Noise Impact Assessment: A Noise Impact Assessment has been prepared to demonstrate that the placement of turbines and the collector substation complies with the MOECC's 2008 publication entitled "Noise Guidelines for Wind Farms".

Documents for Public Review: In accordance with the Regulation, copies of the Draft Site Plan and Noise Impact Assessment will be made available for public review as of March 9, 2015, at the Town of Lakeshore Municipal Office (419 Notre Dame Street, Belle River), County of Essex Municipal Office (360 Fairview Avenue West, Essex) and the Lakeshore Branch of the Essex County Library System (447 Renaud Line Road, Belle River). The reports will also be made available for public review online at: www.belleriverwind.com. The documents will be available for review in English.

Project Contact Information:

To learn more about the Project or to provide feedback, please contact:

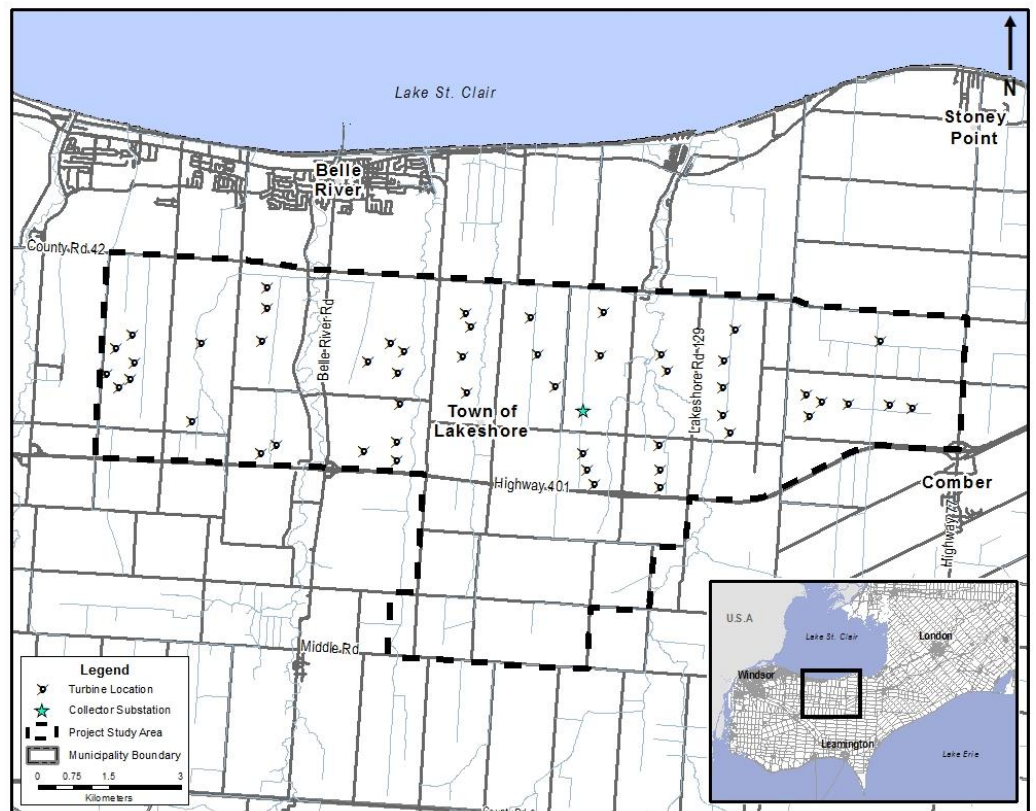
Project Email:

info@belleriverwind.com

Jody Law, Project Developer
Pattern Development
100 Simcoe Street
Toronto, ON M5H 3G2
Phone: (416) 263-8029

Brian Edwards, Project Developer
Samsung Renewable Energy
2050 Derry Road West
Mississauga, ON L5N 0B9
Phone: (905) 501-5667

Marc Rose, Project Manager
AECOM
105 Commerce Valley Drive West
Markham, ON L3T 7W3
Phone: (905) 747-7793





AVIS –PLAN PRÉLIMINAIRE DU SITE

*Projet d'énergie renouvelable en conformité avec la
Section 54.1 du Règlement de l'Ontario 359/09*

Nom du projet : Projet Belle River Wind (le « Projet »)

Localisation : Ville de Lakeshore, Comté d'Essex, Ontario

Émissions de l'avis de projet : Ville de Lakeshore, Comté d'Essex, le 4 mars 2015

Promoteur : Le projet est proposé par SP Belle River Wind LP, au nom de son associée SP Belle River Wind GP Inc. («Belle River Wind»). Belle River Wind est une société en commandite détenue par Pattern Renewable Holdings Canada, ULC («Pattern Development») et Samsung Renewable Energy, Inc. («Samsung Renewable Energy»).

Description du projet : Étant une installation d'énergie renouvelable, le Projet est soumis aux dispositions de la Partie V.0.1 de la *Loi sur la protection de l'environnement* (la «Loi») et du Règlement de l'Ontario 359/09 (le «Règlement»). Le projet nécessite une autorisation de projet d'énergie renouvelable (APER) avant la construction. Conformément à la Section 54.1 du Règlement, cet avis est distribué avant la soumission de la demande d'autorisation au Ministère de l'Environnement et de l'Action en matière de changement climatique de l'Ontario (MOECC). Conformément à la Loi et au Règlement, l'installation considérée par le projet est un parc éolien de classe 4. S'il est approuvé, le projet aura une puissance nominale maximale de 100 MW. Les principales composantes du projet sont illustrées au plan ci-dessous. Des informations supplémentaires sur le projet, incluant le rapport préliminaire de la description de Projet, sont disponibles en ligne au www.belleriverwind.com.

Plan préliminaire du site : Un plan préliminaire du site a été préparé afin d'identifier et de décrire l'emplacement des principales composantes du Projet, incluant les éoliennes et le poste de raccordement. En vertu du Règlement et par le présent avis, le projet doit tenir compte des zones sensibles au bruit qui existaient en date du 3 mars 2015, tel que défini par la Loi.

Évaluation d'impact sonore : L'évaluation d'impact sonore a été réalisée afin de démontrer que l'emplacement des turbines et des postes de raccordement est conforme à la publication intitulée « Lignes directrices visant le bruit émis par les centrales éoliennes » du Ministère de l'Environnement et de l'Action en matière de changement climatique, parue en 2008.

Documents pour l'examen public : Conformément au Règlement, des copies du plan préliminaire du site et de l'évaluation d'impact sonore seront disponibles au public pour consultation à partir du 9 mars 2015, au bureau municipal de la Ville de Lakeshore (419, rue Notre-Dame, Belle River), au bureau municipal du Comté d'Essex (360 Fairview Avenue West, Essex) et à la succursale Lakeshore du réseau de bibliothèques du Comté d'Essex (447 Renaud Line, Belle River). Les documents, disponibles en anglais, peuvent également être consultés en ligne au www.belleriverwind.com.

Contact et information sur le projet :

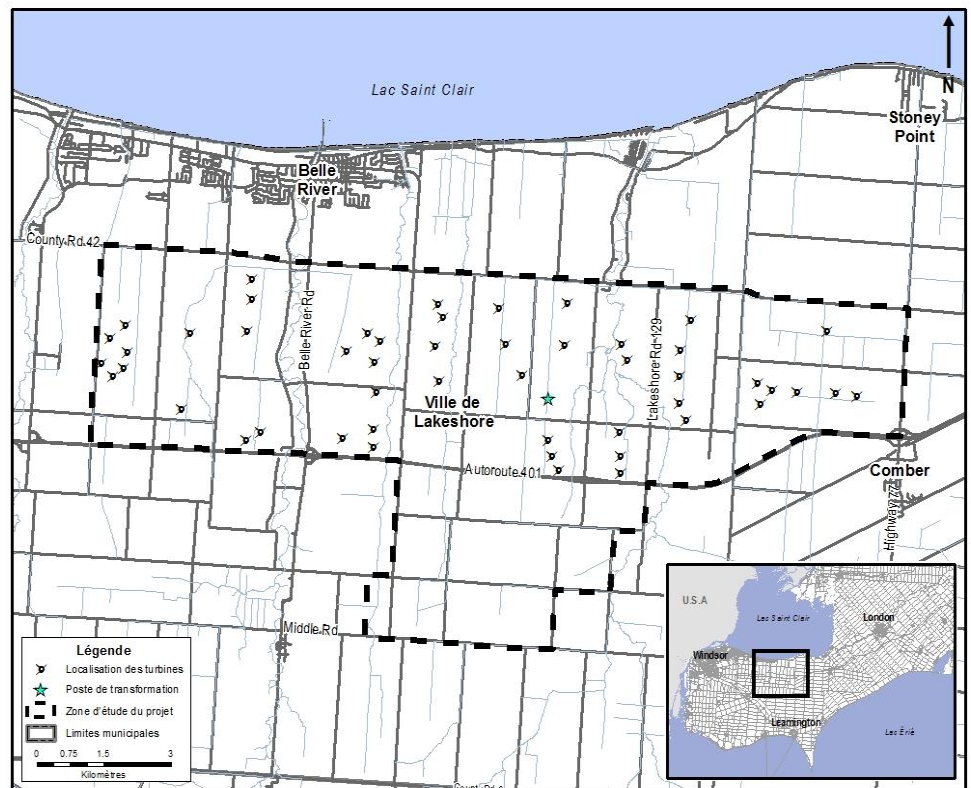
Pour en savoir davantage sur le Projet ou pour vos commentaires, veuillez contacter :

Projet Email : info@belleriverwind.com

Jody Law, Promoteur du Projet
Pattern Development
100, Simcoe Street
Toronto, ON M5H 3G2
Tél : (416) 263-8029

Brian Edwards, Promoteur du Projet
Samsung Renewable Energy
2050, Derry Road West
Mississauga, ON L5N 0B9
Tél : (905) 501-5667

Marc Rose, Consultant / Chef de Projet
AECOM
105, Commerce Valley Drive West
Markham, ON L3T 7W3
Tél : (905) 747-7793



Inspirational illusionist comes to Essex

Jennifer Cranston
Claude Haggerty did not have an easy childhood. Raised in foster care and suffering from a severe stutter, he was no stranger to bullying.

He found solace in magic and began learning simple tricks from a book in grade seven. His school principal would patiently allow Haggerty to perform his tricks for him.

One day in grade nine, the principal had an extra ticket to a magic show and told Haggerty he had won it in a draw.

Haggerty's dream was to become an illusionist. He made his dream come true and now he inspires others to follow their own dreams.

For 34 years Haggerty has been a professional illusionist who shares his inspirational message through his craft.

His shows include making people disappear and levitate. He reads audience members' minds and inspires children to set goals and follow their dreams.

He performed at the opening of the West Edmonton Mall and made an elephant disappear over 300 times at Niagara Falls. He's done over 11,000 shows at venues big and

small in towns across Canada.

One of his favourite things is performing at schools for free. He does this in every town he visits with the help of local sponsors.

Thanks to Essex Party Discount, Schinkel's Meat Market and Valvoline Express Care, Haggerty was able to do performances at Holy Name Catholic Elementary School, Harrow District High School, Harrow Public School and St. Anthony Catholic Elementary schools on Thursday.

"I give free tickets to every principal, about 162,000 so far," he said.

When he visits schools he always gives the principal tickets for his bigger local show to raffle off.

"I do about 400 elementary schools a year," he said. "I've done 8,000 so far."

In his shows for schools he always performs tricks that can be found in children's books and encourages students to go to the library to look them up. While they are there he suggests they look up books on their own interests, dreams and goals.

He gets emails from many students who share their stories with him.

"I've been blessed by all of this," he said.

J.C. Jantzi enjoyed a performance of Haggerty's when he was in grade eight. He has a story similar to Haggerty's including a less than perfect childhood. He is now an "anti-bullying magician," and a close friend of Haggerty's.

Randy Rogers is another professional magician who was inspired by Haggerty when Haggerty visited his grade school.

"My goal is to inspire children every day," said Haggerty.

Haggerty performed



at the Essex Legion on Monday night and hopes to be in Kingsville in the coming weeks.

Claude Haggerty does a card trick at Holy Name with the help of a student. The Inspirational Illusionist is proud of the work he is able to do at elementary schools across the country.



NOTICE OF DRAFT SITE PLAN

for a Renewable Energy Project in accordance with Section 54.1 of Ontario Regulation 359/09

Project Name: Belle River Wind Project (the "Project")

Project Location: The Project is located in the Municipality of the Town of Lakeshore, Essex County, Ontario

Notice Dated at: Town of Lakeshore, Essex County this, the 4th of March, 2015

Applicant: The Project is being proposed by SP Belle River Wind, LP, by its general partner, SP Belle River Wind, GP Inc. ("Belle River Wind"). Belle River Wind is a joint venture limited partnership owned by affiliates of Pattern Renewable Holdings Canada, ULC ("Pattern Development") and Samsung Renewable Energy, Inc. ("Samsung Renewable Energy").

Project Description: As a renewable energy facility, the Project is subject to the provisions of the *Environmental Protection Act* (the "Act") Part V.0.1 and Ontario Regulation 359/09 (the "Regulation") and requires a Renewable Energy Approval (REA) prior to construction. This notice is being distributed in accordance with section 54.1 of the Regulation prior to an application being submitted to the Ministry of the Environment and Climate Change (MOECC).

If approved, the Project would have a total maximum nameplate capacity of up to 100 megawatts (MW). As identified in the Act and Regulation, the Project is considered to be a Class 4 wind facility. This project is being proposed in accordance with the requirements of the Act and Regulation. The location of key Project components is shown in the map below. Additional information about the Project, including a Draft Project Description Report, is available online at www.belleriverwind.com.

Draft Site Plan: A Draft Site Plan has been prepared to identify and describe the location of key Project components, including wind turbines and the collector substation. By this Notice, pursuant to the Regulation, the Project must consider noise receptors as defined by the Act that existed as of March 3, 2015.

Noise Impact Assessment: A Noise Impact Assessment has been prepared to demonstrate that the placement of turbines and the collector substation complies with the MOECC's 2008 publication entitled "Noise Guidelines for Wind Farms".

Documents for Public Review: In accordance with the Regulation, copies of the Draft Site Plan and Noise Impact Assessment will be made available for public review as of March 8, 2015, at the Town of Lakeshore Municipal Office (419 Notre Dame Street, Belle River), County of Essex Municipal Office (380 Fairview Avenue West, Essex) and the Lakeshore Branch of the Essex County Library System (447 Renaud Line Road, Belle River). The reports will also be made available for public review online at: www.belleriverwind.com. The documents will be available for review in English.

Project Contact Information:
To learn more about the Project or to provide feedback, please contact:

Project Email:
info@belleriverwind.com

Jody Law, Project Developer
Pattern Development
100 Simcoe Street
Toronto, ON M5H 3G2
Phone: (416) 263-8029

Brian Edwards, Project Developer
Samsung Renewable Energy
2050 Derry Road West
Mississauga, ON L5N 0B9
Phone: (905) 501-6667

Marc Rose, Project Manager
AECOM
105 Commerce Valley Drive West
Markham, ON L3T 7W3
Phone: (905) 747-7793



ANNOUNCEMENT



Ms. Diane Malenfant

Linda Scott, General Manager of the Essex Community Futures Development Corporation (CFDC), is pleased to announce that Diane Malenfant has joined the team as the new Business Development and Lending Officer.

Diane has supported entrepreneurs in the region in all stages of business development for many years now. In her new role Diane will assist entrepreneurs in navigating the funding options available to them and will provide direct assistance with the CFDC loan application process.

The Essex CFDC is a federally funded non-profit organization whose goal is to encourage economic development and create job opportunities through business support services and loans up to \$250,000. We are proud to have served businesses in Amherstburg, Essex, Kingsville, Lakeshore, LaSalle, Leamington, Pelee Island and Tecumseh for twenty years.

www.essexcfdc.on.ca
519-776-4611



ESSEX
CFDC/SADC

Canada

Team Kinetic Konnection to Host Adventure Racing Clinic

Veteran adventure racers Andrew Pula and Rob Pula of Team Kinetic Konnection, who have completed more than 50 Adventure Races across Ontario, will again host an adventure racing clinic for those preparing to participate in the SCAR – South Coast Adventure Race which will take place June 20, 2015. The brothers will design the SCAR's race course, which debuted to rave reviews in its inaugural year.

"The orienteering discipline of Adventure Racing always seems to raise the most questions, so we'll spend time focusing on that element," said Rob Pula, Team Captain and President of Kinetic Konnection in Windsor. "We'll also talk about the logistics of race day, team dynamics and training, and open it up for questions and answers."

This seminar will take place on Tuesday, March 24 from 6pm – 8pm in the Ontario Room at the WFCU Centre in

Windsor. There is no fee to participate, but pre-registration is required as spaces are limited. To register, visit scarseminar.eventbrite.ca.

To learn more about The SCAR, visit erca.org/scar-south-coast-adventure-race.



Rotary is the world's largest service organization with 1.2 million members. The Rotary Club of Windsor St. Clair is comprised of about 40 members from around the Essex Region dedicated to improving our local and worldwide communities by undertaking projects to address hunger, health, literacy, promote physical activity, and provide support to the financially disadvantaged in our community.

Since 1973, the Essex Region Conservation Authority has served as a community-based organization dedicated to protecting, restoring and managing the natural resources of the Essex Region.

The Harrow K of C is hosting their annual fundraiser
The 3rd Annual

FISHING & BOATING EXPO

Sat. March 14 8am to 7pm

Come & check out this great event!

Harrow Fair Building
134 McAfee, Harrow

CONCESSION STAND
Sausages, Hot Dogs, Drinks, etc.

PERCH FISH FRY
10 am to 6 pm
While quantities last

COLCHESTER MARINA
having a draw for a
2015 SEASONAL HARBOR PASS

CHINESE AUCTION

Admission \$5.00 • Children under 12 are FREE
Proceeds will go to the S.V.D.P. Foodbank and the Colchester Guardian Rescue Boat



NOTICE OF DRAFT SITE PLAN

for a Renewable Energy Project in accordance with Section 54.1 of Ontario Regulation 359/09

Project Name: Belle River Wind Project (the "Project")

Project Location: The Project is located in the Municipality of the Town of Lakeshore, Essex County, Ontario

Notice Dated at: Town of Lakeshore, Essex County this, the 4th of March, 2015

Applicant: The Project is being proposed by SP Belle River Wind, LP, by its general partner, SP Belle River Wind, GP Inc. ("Belle River Wind"). Belle River Wind is a joint venture limited partnership owned by affiliates of Pattern Renewable Holdings Canada, ULC ("Pattern Development") and Samsung Renewable Energy, Inc. ("Samsung Renewable Energy").

Project Description: As a renewable energy facility, the Project is subject to the provisions of the *Environmental Protection Act* (the "Act") Part V.0.1 and Ontario Regulation 359/09 (the "Regulation") and requires a Renewable Energy Approval (REA) prior to construction. This notice is being distributed in accordance with section 54.1 of the Regulation prior to an application being submitted to the Ministry of the Environment and Climate Change (MOECC).

If approved, the Project would have a total maximum nameplate capacity of up to 100 megawatts (MW). As identified in the Act and Regulation, the Project is considered to be a Class 4 wind facility. This project is being proposed in accordance with the requirements of the Act and Regulation. The location of key Project components is shown in the map below. Additional information about the Project, including a Draft Project Description Report, is available online at www.belleriverwind.com.

Draft Site Plan: A Draft Site Plan has been prepared to identify and describe the location of key Project components, including wind turbines and the collector substation. By this Notice, pursuant to the Regulation, the Project must consider noise receptors as defined by the Act that existed as of March 3, 2015.

Noise Impact Assessment: A Noise Impact Assessment has been prepared to demonstrate that the placement of turbines and the collector substation complies with the MOECC's 2008 publication entitled "Noise Guidelines for Wind Farms".

Documents for Public Review: In accordance with the Regulation, copies of the Draft Site Plan and Noise Impact Assessment will be made available for public review as of March 9, 2015, at the Town of Lakeshore Municipal Office (419 Notre Dame Street, Belle River), County of Essex Municipal Office (360 Fairview Avenue West, Essex) and the Lakeshore Branch of the Essex County Library System (447 Renaud Line Road, Belle River). The reports will also be made available for public review online at: www.belleriverwind.com. The documents will be available for review in English.

Project Contact Information:
To learn more about the Project or to provide feedback, please contact:

Project Email:
info@belleriverwind.com

Jody Law, Project Developer
Pattern Development
100 Simcoe Street
Toronto, ON M5H 3G2
Phone: (416) 263-8029

Brian Edwards, Project Developer
Samsung Renewable Energy
2050 Derry Road West
Mississauga, ON L5N 0B9
Phone: (905) 501-5667

Marc Rose, Project Manager
AECOM
105 Commerce Valley Drive West
Markham, ON L3T 7W3
Phone: (905) 747-7793



County of Essex Load Restrictions

Operators are hereby warned to observe 5 Tonne Per Axle Load Restriction Signs on County Roads during the Load Restriction period including but not restricted to the period of March 1, 2015 to April 30, 2015 as authorized by the Highway Traffic Act, R.S.O. 1990, Chapter H.8, Section 122, Subsections 1, 2, 3 and 4 and Schedule K of County of Essex By-law #26-2002, as amended. A copy of Schedule K is available on the County of Essex website www.countyofessex.on.ca



Manager, Maintenance
Operations
Phone – Leamington
519-326-8691

County Engineer
Phone – Essex
519-776-6441 ext. 1316
Fax: 519-776-4455



Microbes dans le métro : on se calme

Des traces de microbes inconnus dans le métro de New York, et d'autres microbes plutôt inquiétants, comme le peste ou le brucelle du chevreau. Quelques semaines plus tard, l'un des auteurs de cette étude qui a fait beaucoup de bruit en relisant quelques lignes sur la communication. Ce n'est en effet pas tous les jours qu'un microbiologiste a l'occasion de produire un complément de sa recherche que j'ai écrit en soutien sur la distribution géographique de micro-organismes. Par contre, regrette à présent Christopher Brown, il aurait fallu expliquer un peu plus clairement qu'il y a une différence entre identifier « de l'ADN de la peste » et démontrer que le pathogène est bel et bien présent à New York (et vivant). Malheureusement, identifier sur le site Microbe.net, cette simple mention dans notre article a suffi à créer « l'impression dans le public que les pathogènes étaient présents et bien répartis dans le métro ». C'est ce qu'il appelle, dans son titre, « la longue route de l'ADN au pathogène » — ce chemin peut être très long et nous ne sommes pas biologistes.

TOILETTES POUR FOURMIS

Les fourmis ont un autre point commun avec les animaux et nous : elles ont un lieu précis pour satisfaire leurs besoins naturels. « Ce sont des créatures très propres », souligne l'Allemand Tomer Czaczkes, auteur principal de la recherche parue dans *PLOS One*. Ce serait la première fois qu'une étude fait une telle démonstration et considérant la petite taille des fourmis et de leurs déjections, les chercheurs ont dû employer les grands moyens : certaines fourmis étaient systématiquement nourries avec une solution rouge, d'autres avec une solution bleue. Ce qui rendait les crottes plus faciles à repérer dans la fourmière. Résultat : elles se retrouvent dans des coins, et toujours les mêmes. La toi-

lette des fourmis, en quelque sorte.

LE MYSTÉRIEUX NUAGE DE MARS

Dans *La Guerre des mondes*, le célèbre roman d'H.G. Wells, l'invasion des Martiens commençait par la détection d'une mystérieuse éruption sur Mars. C'est une semblable observation qui a fait

jaser la semaine dernière. Mais pour l'instant, on peut dormir tranquille... En fait, ces « mystérieux nuages », atteignant 280 km d'altitude, remontent à 2012. Ils avaient alors été observés par des astronomes amateurs. Une équipe internationale vient de publier dans *Nature* un texte qui décortique les théories les plus plausibles. Auroras boréales? Mars a bel

et bien des petites anomalies magnétiques qui permettraient l'existence de ces lumières célestes. Toutefois, pour que des astronomes terriens aient pu voir une aurore boréale martienne, il aurait fallu qu'elle soit 1000 fois plus brillante que nos propres aurores boréales. Impact d'une météorite, qui aurait soulevé un énorme nuage de poussière? Peut-être, mais

celui-ci aurait été encore visible lors des observations suivantes. Un nuage de glace, qui aurait reflété la lumière du Soleil? Peut-être, mais à cette altitude, il aurait fallu une chute brutale de température de 100 degrés. Même pour Mars, c'est beaucoup demander. Au final, les scientifiques restent donc perplexes. Mais l'hypothèse d'une fusée martienne est écartée.

Actualités scientifiques

Source : Agence Science-Press



AVIS –PLAN PRÉLIMINAIRE DU SITE

Projet d'énergie renouvelable en conformité avec la Section 54.1 du Règlement de l'Ontario 359/09

Nom du projet : Projet Belle River Wind (le « Projet »)

Localisation : Ville de Lakeshore, Comté d'Essex, Ontario

Émissions de l'avis de projet : Ville de Lakeshore, Comté d'Essex, le 4 mars 2015

Promoteur : Le projet est proposé par SP Belle River Wind LP, au nom de son associée SP Belle River Wind GP Inc. («Belle River Wind»). Belle River Wind est une société en commandite détenue par Pattern Renewable Holdings Canada, ULC («Pattern Development») et Samsung Renewable Energy, Inc. («Samsung Renewable Energy»).

Description du projet : Étant une installation d'énergie renouvelable, le Projet est soumis aux dispositions de la Partie V.0.1 de la Loi sur la protection de l'environnement (la «Loi») et du Règlement de l'Ontario 359/09 (le «Règlement»). Le projet nécessite une autorisation de projet d'énergie renouvelable (APER) avant la construction. Conformément à la Section 54.1 du Règlement, cet avis est distribué avant la soumission de la demande d'autorisation au Ministère de l'Environnement et de l'Action en matière de changement climatique de l'Ontario (MOECC). Conformément à la Loi et au Règlement, l'installation considérée par le projet est un parc éolien de classe 4. S'il est approuvé, le projet aura une puissance nominale maximale de 100 MW. Les principales composantes du projet sont illustrées au plan ci-dessous. Des informations supplémentaires sur le projet, incluant le rapport préliminaire de la description de l'installation, sont disponibles en ligne au www.belleriverwind.com.

Plan préliminaire du site : Un plan préliminaire du site a été préparé afin d'identifier et de décrire l'emplacement des principales composantes du Projet, incluant les éoliennes et le poste de raccordement. En vertu du Règlement et par le présent avis, le projet doit tenir compte des zones sensibles au bruit qui existaient en date du 3 mars 2015, tel que défini par la Loi.

Évaluation d'impact sonore : L'évaluation d'impact sonore a été réalisée afin de démontrer que l'emplacement des turbines et des postes de raccordement est conforme à la publication intitulée « Lignes directrices visant le bruit émis par les centrales éoliennes » du Ministère de l'Environnement et de l'Action en matière de changement climatique, parue en 2008.

Documents pour l'examen public : Conformément au Règlement, des copies du plan préliminaire du site et de l'évaluation d'impact sonore seront disponibles au public pour consultation à partir du 9 mars 2015, au bureau municipal de la Ville de Lakeshore (419, rue Notre-Dame, Belle River), au bureau municipal du Comté d'Essex (360 Fairview Avenue West, Essex) et à la succursale Lakeshore du réseau de bibliothèques du Comté d'Essex (447 Renaud Line, Belle River). Les documents, disponibles en anglais, peuvent également être consultés en ligne au www.belleriverwind.com.

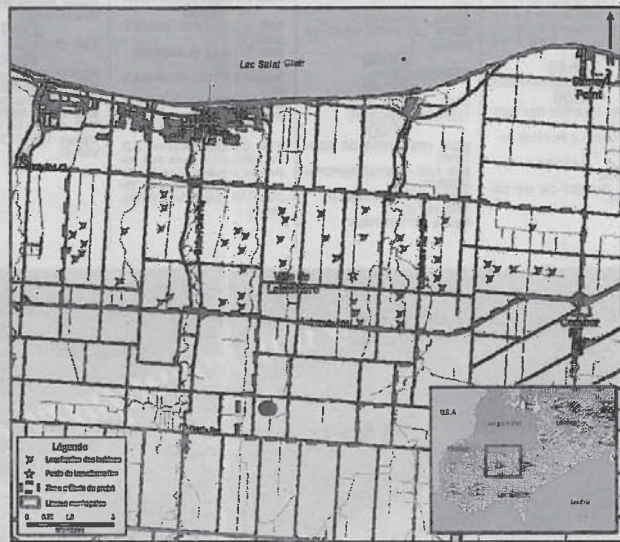
Contact et information sur le projet : Pour en savoir davantage sur le Projet ou pour vos commentaires, veuillez contacter :

Projet Email : info@belleriverwind.com

Jody Law, Promoteur du Projet
Pattern Development
100, Simcoe Street
Toronto, ON M5H 3G2
Tél : (416) 263-8029

Brian Edwards, Promoteur du Projet
Samsung Renewable Energy
2050, Derry Road West
Mississauga, ON L5N 0B9
Tél : (905) 501-5667

Marc Rose, Consultant / Chef de Projet
AECOM
105, Commerce Valley Drive West
Markham, ON L3T 7W3
Tél : (905) 747-7793



Your Targeting Report

Mailing Campaign Details

02-27-2015



Mailing ID DA00D33277505834943

Thank you for taking advantage of our targeting service - a one stop solution designed to help you get the most out of your direct mail campaigns.

- Anonymous Precision Targeter users will have their reports saved and accessible for 30 days from the day the report has been generated.
- Signed-In Precision Targeter users will have their reports saved and accessible for 13 months from the day the report has been generated.

Inside, find comprehensive insight into your selected trade area, including:

Variables	
Address Attributes	Houses, Apartments, Farms and Businesses
Number of Mail Pieces	9696
Urban / Rural	All
Estimated Delivery Cost	\$1731.13
Delivery Mode (Route Type)	Letter Carrier (LC), Rural Route (RR), Suburban Service (SS), General Delivery (GD), Lock Box (LB), Call For (CF), Motorized Route (MR), Direct (DR)
Valid for Mailings From	15-02-13 To 15-03-12
Householder Types	Consumer's Choice

Not only does the attached report provide an in-depth look at your chosen trade area, it also harnesses the power of data analytics to help maximize your return on investment (ROI) by providing you with:

- A Route Ranking report that prioritizes your postal route selections based on your demographic criteria, enabling you to deliver your message to the people most likely to respond;
- A Postal Station Summary report that indicates the facilities responsible for your mailing;
- Maps, Impact Assessment, and many other campaign-enhancing resources.

Do you want to further improve your direct mailings? Take advantage of our suite of data and targeting solutions:

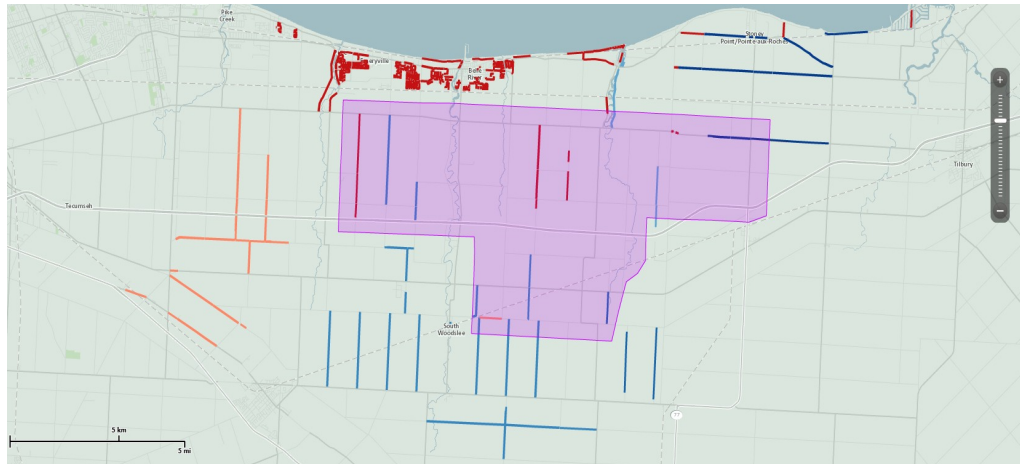
Canada Complete Lists	Data Management Services	Analytics
Canada Complete lists provide one of the largest reach in Canada, drawing from Canada Post's mail delivery database of over 13 million residential addresses and close to a million business addresses. With our additional targeting filters, supplement your list by pinpointing specific audiences that best match what your best prospects look like.	With the help of Canada Post's Data Management Services, you can improve your address accuracy, identify movers, and suppress duplicate records. This will ensure clean, current, and accurate mail files - in doing so, you will have less undeliverable mail and an improved ROI.	Our analytics experts will work with you to ensure your consumer data delivers optimal results. For example, we can help identify highest-potential customers and prospects through penetration analysis, location intelligence, segmentation, modeling and profiling.

Questions? Contact your Canada Post Sales Representative or our Commercial Service Network at 1-866-757-5480.

Your Targeting Report

Route Ranking Report

Reaching the right people with the right message is a key driver of campaign success. The map below shows your selected trade area and the routes that make up your coverage. The routes are colour coded according to the penetration of your selected demographic variable(s) to show how closely it matches your ideal prospect.



Your Targeting Report

Route Ranking Report



Below you will find your Route Ranking Report, which provides you with a tabular view of the routes within your trade area ranked according to the value of the selected demographic variable(s). By looking at the "Cumulative Penetration" and the "Cumulative Points of Call" columns, you can easily determine which routes you need to target in order to meet your desired quota.

FSA	Delivery Mode (Route)	Depot	All Points Of Call	Cumulative Points of Call
N0R	SS0001	BELLE RIVER PO	996	996
N0R	LB0001	BELLE RIVER PO	955	1951
N0R	SS0003	BELLE RIVER PO	774	2725
N0R	SS0006	BELLE RIVER PO	627	3352
N0R	SS0002	BELLE RIVER PO	620	3972
N0R	RR0001	BELLE RIVER PO	522	4494
N0R	RR0003	BELLE RIVER PO	514	5008
N0R	SS0004	BELLE RIVER PO	502	5510
N0R	SS0005	BELLE RIVER PO	461	5971
N0R	RR0002	MAIDSTONE PO	447	6418
N0R	RR0001	SOUTH WOODSLEE PO	441	6859
N0R	RR0003	MAIDSTONE PO	434	7293
N0R	RR0001	POINTE AUX ROCHES PO	403	7696
N0R	RR0002	BELLE RIVER PO	316	8012
N0R	RR0004	SOUTH WOODSLEE PO	312	8324
N0R	LB0001	POINTE AUX ROCHES PO	267	8591
N0R	RR0001	ST JOACHIM PO	261	8852
N0R	RR0002	SOUTH WOODSLEE PO	238	9090
N0R	RR0001	RUSCOM STATION PO	162	9252
N0R	RR0001	MAIDSTONE PO	137	9389
N0R	LB0001	SOUTH WOODSLEE PO	116	9505
N0R	LB0001	ST JOACHIM PO	99	9604
N0R	LB0001	MAIDSTONE PO	92	9696

Your Targeting Report

Postal Station Summary



To avoid transportation charges, you may want to deposit your Unaddressed Admail™ directly at each postal station responsible for your mailing. The table below provides you with a list of post offices where you need to induct your mailing, and how many pieces must be deposited at each location.

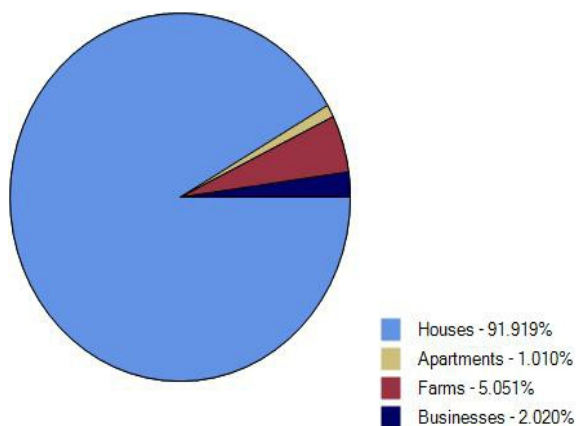
	HOUSES	APARTMENTS	FARMS	BUSINESSES	TOTAL POINTS OF CALL
BELLE RIVER PO500 NOTRE DAME ST BELLE RIVER ON N0R 1A0					
TOTAL	6091	68	0	128	6287
MAIDSTONE PO11860 TALBOT RD MAIDSTONE ON N0R 1K0					
TOTAL	909	0	130	71	1110
POINTE AUX ROCHES PO6695 TECUMSEH RD POINTE AUX ROCHES ON N0R 1N0					
TOTAL	602	15	38	15	670
RUSCOM STATION PORR0001 RUSCOM STATION ON N0R 1R0					
TOTAL	141	0	21	0	162
ST JOACHIM PO2735 COUNTY RD 42 ST JOACHIM ON N0R 1S0					
TOTAL	333	0	20	7	360
SOUTH WOODSLEE PO73 KING ST SOUTH WOODSLEE ON N0R 1V0					
TOTAL	783	24	284	16	1107
GRAND TOTAL	8859	107	493	237	9696

Your Targeting Report

Trade Area Marketing Insights

Below, you will find some insights to your trade area. The provided charts give a simple visual representation of some key characteristics of your target area in order to help you better understand the dynamics of your market.

Address Attributes



This chart provides you with a breakdown of various delivery points within your trade area, based on your selected address attributes.

The majority of your area is characterized by:
Houses

Did you know...

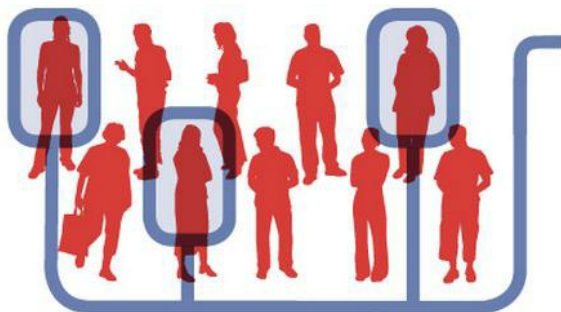
We can help you discover and harvest untapped market potential? We do so by generating a list of additional high value routes, typically located just outside your selected trade area, that meet or exceed your targeting criteria. To take advantage of this offering, simply accept our high value walk suggestions within the online application or request this feature when having an analysis run by our team of geospatial analysts.

Your Targeting Report

Powerful Data & Targeting



Looking for more ways to harvest the campaign-boosting powers of data and analytics? We have options...



It's time to be more direct. Reach more prospects with Canada Complete lists from Canada Post

Canada's best list just got even better. Our lists provide one of the largest reach in Canada, drawing from our mail delivery database of over 13 million residential addresses and close to a million business addresses. By customizing your mail with a name and/or an address you can provide an instant boost to open rates and responses. With our additional targeting filters, supplement your list by pinpointing specific audiences based on geographic, demographic, and lifestyle criteria that best match what your best prospects look like.

Why choose Canada Complete?

- We have more addresses than anyone else and with the best market penetration in the country
- Gain access to the most complete list that can provide nationwide access to apartments and suite numbers
- Validated addresses that you know are deliverable - save money by reducing returned mail
- Exclude existing customers by suppressing addresses you already have - only pay for the records you need
- Canada's best list for accessing Canadian New Movers - a segment that spends \$11B annually
- Enhance your list with a range of unique and exclusive targeting filters to reach your best audience

Ensure your mailing list is valid

Is bad address data hindering your campaign performance? Thanks to our **Smart Data Cleaner**, it doesn't have to. This easy-to-use online tool lets you clean and update your customer and prospect mailing lists. Not sure if your list needs a scrub? Get a free diagnostic first.

Reach people by name and boost response

Unaddressed Admail™ is a powerful and effective marketing solution. To take your targeting to a whole new level use Addressed Admail™, and reach Canadians by name and address at their place of residence or work. Studies have shown that 87% of Canadians are likely to read mail that is addressed to them personally, and that addressed direct mail garners three times as much attention as unaddressed direct mail.

Turn your customer data into actionable insight with our Advanced Analytics Services

Data is the fuel that drives campaign performance, but it can sometimes be a challenge to analyze and take action on it. That's where our dedicated team of analytics experts comes in. Through **penetration analysis, location intelligence, segmentation, modeling and profiling** they can help enhance your response potential by identifying your highest potential prospects.

Want to learn more about our powerful Data & Targeting Solutions?

Visit our website: **www.canadapost.ca/datatargetingsolutions**

email us at: **data.targetingsolutions@canadapost.ca**

If you wish to speak with one of our Data and Targeting specialists, call us at **1-877-281-4137**

1. **Address Attributes:** Describes the types of buildings present in your trade area, whether they are houses, apartments, farms, and/or businesses.
2. **All Points of Call:** The total number of physical locations (points of call) receiving your mailing on a given letter carrier's route, which can be houses, apartments, farms and/or businesses based on your selection criteria.
3. **Average Value:** The average value (%) of the chosen Statistics Canada demographic variables that can be associated with the letter carrier's route, which provides you with insight into your recipients.
4. **Cumulative Penetration:** The cumulative percentage of penetration associated with the letter carrier's routes based on the selected demographic variables.
5. **Cumulative Points of Call:** The cumulative point of call count associated with the letter carrier's routes, which has been calculated by adding the previous Delivery Mode rows in the report.
6. **Delivery Mode:** The area served by a letter carrier.
7. **Depot:** A postal facility established for the processing and delivery of mail. Example: Etobicoke, Ontario.
8. **Forward Sortation Area (FSA):** The first three characters (alpha-numeric-alpha) of a Postal Code ^{OM}, which represent a geographic area. Example: M9W
9. **Postal Station Summary:** This report indicates which postal stations are responsible for your targeted routes. The count of each point of call type (houses, apartments, farms, and/or businesses) is displayed for each depot. The total point of call count, listed at the end of the report, denotes the number of houses, apartments, farms, and/or businesses associated with each postal station.
10. **Route ID:** This represents the identifier assigned to each letter carrier's route. Its primary use is for the coordination of the mail delivery.
11. **Target Variables:** A report can have a minimum of one to a maximum of three Statistics Canada demographic variables selected. These variables are displayed in the value columns as a percentage (%) that can be associated with that entire Delivery Mode.
12. **Total Points of Call:** The total number of houses, apartments, farms, and/or businesses (based on your selection) associated with the depot in your Postal Station Summary. This number indicates how many pieces are required for each depot.
13. **Total:** This row represents the sum of each dwelling type (houses, apartments, farms, and/or businesses) within a depot.
14. **Valid for Mailings From:** Due to monthly route restructures, the results found within this report are valid between these dates. Mailing outside of these dates could cause delivery problems or pose a risk of non-delivery.

Wong Ken, Michelle

Subject: Notice of Draft Site Plan for Belle River Wind Project

From: Rose, Marc
Cc: Van der Woerd, Mark
Sent: Friday, March 13, 2015 3:10 PM
Subject: Notice of Draft Site Plan for Belle River Wind Project

Good afternoon,

You are receiving this email because you requested that we provide you with public notifications for the Belle River Wind Project ("the Project") via email at the first public open house.

Last week, a public notice was distributed regarding the **Draft Site Plan and Noise Impact Assessment** for the Belle River Wind Project. To review a copy of the notice, please use the following link:

http://belleriverwind.com/files/8614/2586/6419/Public_Notice_-_Draft_Site_Plan_for_Belle_River_Wind_Project_3_4_2014.pdf.

The Draft Site Plan has been prepared to identify and describe the location of key Project components, including wind turbines and the collector substation. The Noise Impact Assessment has been prepared to demonstrate that the placement of turbines and the collector substation complies with the MOECC's 2008 publication entitled "Noise Guidelines for Wind Farms".

Copies of the Draft Site Plan and Noise Impact Assessment were made available for public review starting on March 9, 2015, at the Town of Lakeshore Municipal Office (419 Notre Dame Street, Belle River), County of Essex Municipal Office (360 Fairview Avenue West, Essex) and the Lakeshore Branch of the Essex County Library System (447 Renaud Line Road, Belle River). The report is also available for public review online at: www.belleriverwind.com.

If you wish to be removed from the project contact list, [please click the following link](#).

Sincerely,

Marc Rose, Consultant Project Manager
On behalf of the Belle River Wind Project Team

This e-mail and any attachments contain AECOM confidential information that may be proprietary or privileged. If you receive this message in error or are not the intended recipient, you should not retain, distribute, disclose or use any of this information and you should destroy the e-mail and any attachments or copies.

Notice of Draft REA Reports and Second Public Meeting



NOTICE OF DRAFT REA REPORTS AND SECOND PUBLIC MEETING for the Belle River Wind Project

Project Name: Belle River Wind Project (the "Project")

Project Location: The Project is located in the Town of Lakeshore, Essex County, Ontario

Notice Dated at: Town of Lakeshore and Essex County this, the 18th of March, 2015

Applicant: The Project is being proposed by SP Belle River Wind, LP, by its general partner, SP Belle River Wind, GP Inc. ("Belle River Wind"). Belle River Wind is a joint venture limited partnership owned by affiliates of Pattern Renewable Holdings Canada, ULC ("Pattern Development") and Samsung Renewable Energy, Inc. ("Samsung Renewable Energy").

Project Description: As a renewable energy facility, the Project is subject to the provisions of the *Environmental Protection Act* (the "Act") Part V.0.1 and Ontario Regulation 359/09, as amended (the "Regulation"), and requires a Renewable Energy Approval (REA) prior to construction. This notice is being distributed in accordance with Sections 15 and 16 of the Regulation prior to an application being submitted to the Ministry of the Environment and Climate Change (MOECC).

If approved, the Project would have a total maximum nameplate capacity of up to 100 megawatts (MW). As identified in the Act and Regulation, the Project is considered to be a Class 4 wind facility. This project is being proposed in accordance with the requirements of the Act and Regulation. The location of key Project components is shown in the map below. Additional information about the Project is available online at www.belleriverwind.com.

Notice of Draft REA Reports: The Draft Project Description Report was first made available August 20, 2014. Pursuant to Section 16 of the Regulation, the purpose of this Notice is to communicate that the draft copies of the reports and technical studies that will be submitted as part of the REA application (excluding the Consultation Report) are available for public review. Copies of the Noise Impact Assessment and Draft Site Plan Report for the Project were previously made available for review on March 9, 2015.

Documents for Public Review: In accordance with the Regulation, copies of the Draft REA Reports will be made available for public review starting on March 19, 2015 at the Town of Lakeshore Municipal Office (419 Notre Dame Street, Belle River), County of Essex Municipal Office (360 Fairview Avenue West, Essex) and Lakeshore Branch of the Essex County Library (447 Renaud Line Road, Belle River). The reports will also be made available for public review online at: www.belleriverwind.com. The documents will be available for review in English.

Notice of Second Public Meeting: In accordance with the Regulation, a second Public Meeting has been planned to provide an opportunity for the public to review and provide comments on the studies and investigations that have been conducted for the Project. The purpose of this notice is to provide the public with notification 60 days in advance of the meeting. The meeting is scheduled for the following:

Date: May 20, 2015

Time: 5:00 p.m. to 8:00 p.m.

Location: Atlas Tube Centre, Renaud Room

447 Renaud Line Road, Belle River, ON N0R 1A0

Project Contact Information:

To learn more about the Project or to provide feedback, please contact:

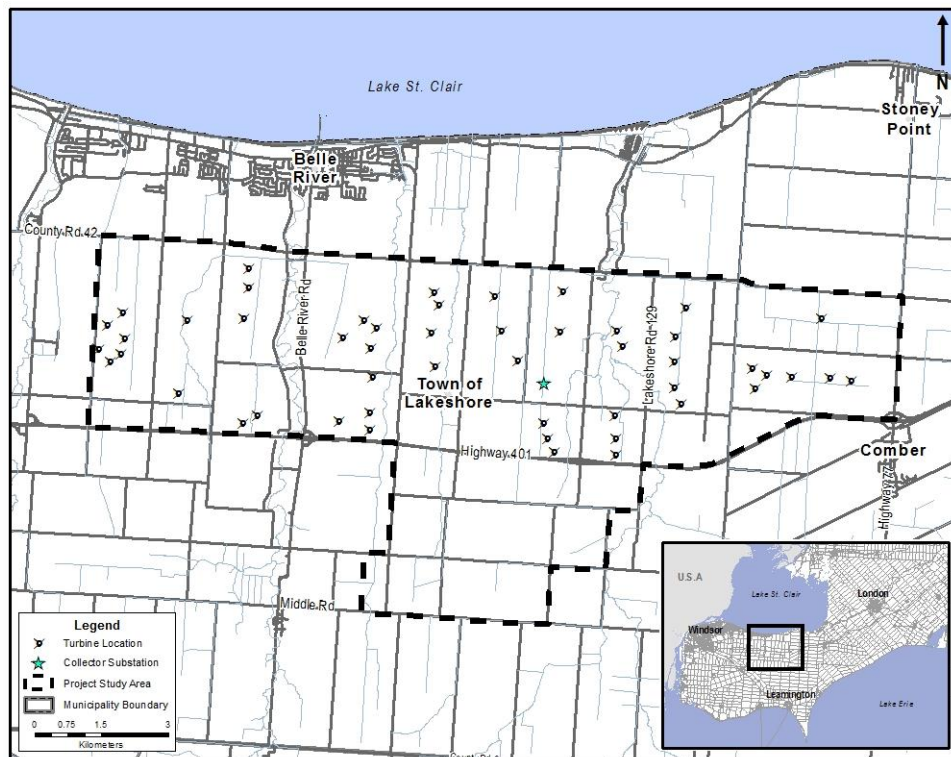
Project Email:

info@belleriverwind.com

Jody Law, Project Developer
Pattern Development
100 Simcoe Street
Toronto, ON M5H 3G2
Phone: (416) 263-8029

Brian Edwards, Project Developer
Samsung Renewable Energy
2050 Derry Road West
Mississauga, ON L5N 0B9
Phone: (905) 501-5667

Marc Rose, Project Manager
AECOM
105 Commerce Valley Drive West
Markham, ON L3T 7W3
Phone: (905) 747-7793





AVIS DES RAPPORTS PRÉLIMINAIRES APER ET DE LA DEUXIÈME ASSEMBLÉE PUBLIQUE du projet Belle River Wind

Nom du projet : Projet Belle River Wind (le « Projet »)

Localisation : Ville de Lakeshore, Comté d'Essex, Ontario

Émissions de l'avis de projet : Ville de Lakeshore, Comté d'Essex, le 18 mars 2015

Promoteur : Le projet est proposé par SP Belle River Wind LP, au nom de son associée SP Belle River Wind GP Inc. («Belle River Wind»). Belle River Wind est une co-entreprise détenue par Pattern Renewable Holdings Canada, ULC («Pattern Development») et Samsung Renewable Energy, Inc. («Samsung Renewable Energy»).

Description du projet : Étant une installation d'énergie renouvelable, le Projet est soumis aux dispositions de la Partie V.0.1 de la *Loi sur la protection de l'environnement* (la «Loi») et du Règlement de l'Ontario 359/09 (le «Règlement»). Le projet nécessite une autorisation de projet d'énergie renouvelable (APER) avant la construction. Conformément Sections 15 et 16 du Règlement, cet avis est distribué avant la soumission de la demande d'autorisation au Ministère de l'Environnement et de l'Action en matière de changement climatique de l'Ontario (MOECC).

Conformément à la Loi et au Règlement, le Projet est considéré comme un parc éolien de classe 4. S'il est approuvé, le projet aura une puissance nominale maximale de 100 MW. Les principales composantes du projet sont illustrées au plan ci-dessous. Des informations supplémentaires sur le projet, incluant le rapport préliminaire de la description de Projet, sont disponibles en ligne au www.belleriverwind.com.

Avis de dépôt de rapports préliminaires APER : La version préliminaire du Rapport de Description de Projet a d'abord été rendue disponible le 20 août 2014. Conformément à la Section 16 du Règlement, le but de cet Avis est d'informer que des versions préliminaires des rapports et des études techniques qui seront soumises à l'appui de la demande APER (à l'exclusion du rapport de Consultation) sont disponibles pour examen public. Des copies du rapport d'impact sonore et du rapport préliminaire de plan de site du projet avaient préalablement été rendues publiques le 9 mars 2015.

Documents disponibles pour l'examen public : Conformément à la réglementation, des exemplaires des Rapports Préliminaires APER seront disponibles pour l'examen public à partir du 19 mars 2015 au bureau municipal de la Ville de Lakeshore (419 rue Notre-Dame, Belle River) et à la succursale Lakeshore du réseau de bibliothèques du Comté d'Essex (447 Renaud Line, Belle River). Les documents, disponibles en anglais, peuvent également être consultés en ligne au www.belleriverwind.com.

Avis de deuxième assemblée publique : conformément à la réglementation, une deuxième assemblée publique a été prévue afin de donner l'opportunité au public de revoir et commenter les études et les recherches qui ont été menées aux fins du Projet. Le but de cet avis est d'aviser le public 60 jours à l'avance de la tenue de cette assemblée. Cette assemblée est prévue est prévue comme suit :

Date : 20 mai 2015

Heure : 5 :00 p.m. à 8 : 00 p.m.

Lieu : Centre Atlas Tube, Salle Renaud,
447 Renaud Line Road, Belle River ON N0R 1A0

Contact et information sur le projet :

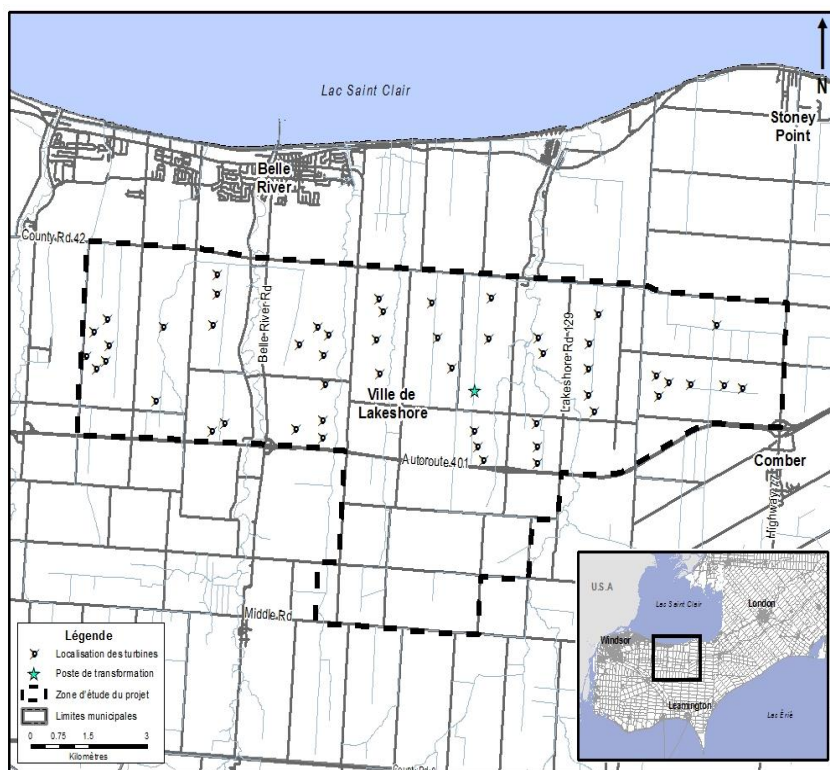
Pour en savoir davantage sur le Projet ou pour vos commentaires, veuillez contacter :

Courriel : info@belleriverwind.com

Jody Law, Promoteur du Projet
Pattern Development
100, Simcoe Street, Toronto, ON M5H 3G2
Tél : (416) 263-8029

Brian Edwards, Promoteur du Projet
Samsung Renewable Energy
2050, Derry Road West, Mississauga, ON L5N 0B9
Tél : (905) 501-5667

Marc Rose, Consultant / Chef de Projet
AECOM
105, Commerce Valley Drive West
Markham, ON L3T 7W3
Tél : (905) 747-7793





LE TOUCHER AUSSI IMPORTANT QUE POUR LES SINGES

Et si le toucher était le plus sous-estimé de nos sens? Si le fait de toucher les autres — amis, collègues, compagnons de jeux, etc. — n'était rien de moins qu'une « nécessité biologique »? Longtemps, la recherche s'est arrêtée aux cellules nerveuses, particulièrement celles qui sont au bout de nos doigts : on a du coup traité le toucher comme un sens « complémentaire » aux autres, celui qui ne servirait qu'à confirmer ce que nos yeux ont déjà décodé. Mais comme toute notre peau est aussi un organe du toucher, il y a peut-être quelque chose de plus profond qui nous a échappé, résume un dossier du *New Scientist*. On sait par exemple que dans l'utérus, le bébé apprend très tôt par le toucher. Et on a récemment découvert qu'une étreinte amicale active, dans notre cerveau, les mêmes régions et la même production d'endorphines... que chez des singes rhésus qui s'épouillent!



GÉOLOGIE : UN SITE DU BIG BANG DE L'ÉVOLUTION

Depuis deux ans, un site en Colombie-Britannique révèle des traces d'un « big bang » de l'évolution : celui qui s'est produit il y a un demi-milliard d'années. Le canyon Marble, dans les Rocheuses, a été identifié il y a deux ans et déjà, il a révélé quelque 3000 fossiles. Il s'inscrit dans une série de sites paléontologiques dont l'ouest de l'Amérique du Nord est riche, mais il contient surtout une strate plus ancienne que d'ordinaire : l'époque dite de l'explosion du cambrien, lorsque les espèces en un



temps record — quelques dizaines de millions d'années — se sont diversifiées pour donner naissance à toutes les branches du vivant que nous connaissons aujourd'hui.

L'ODEUR DE L'AUTRE APRÈS UNE POIGNÉE DE MAIN

Après une poignée de main, vous reniflez votre

main. Comme un chien le ferait s'il avait une main. Ça semble difficile à croire, mais c'est ce que des chercheurs israéliens en psychologie prétendent avoir démontré en filmant à leur insu 153 volontaires qui avaient accepté d'être branchés à différents appareils mesurant leurs réactions physiologiques — alors qu'ils ignoraient quel

Actualités scientifiques

Source : Agence Science-Press

était le véritable but de l'expérience. Écrivant dans l'édition du 3 mars de la revue *eLife*, Noam Sobel et ses collègues racontent qu'après une poignée de main, les volontaires approchaient leur main de leur nez deux fois plus souvent qu'avant (près de 50 % contre 22 %). Et ce n'était pas pour se gratter le nez, révèlent les caméras. « Je

suis convaincu que ce n'est que la pointe de l'iceberg », déclare Sobel au *New Scientist*. C'est que si ça devait se confirmer, ce serait une incursion inédite dans nos comportements animaux, puisque les mammifères échangent beaucoup d'informations en se reniflant les uns les autres. Quoique plus ouvertement que nous...



AVIS DES RAPPORTS PRÉLIMINAIRES APER ET DE LA DEUXIÈME ASSEMBLÉE PUBLIQUE du projet Belle River Wind

Nom du projet : Projet Belle River Wind (le « Projet »)

Localisation : Ville de Lakeshore, Comté d'Essex, Ontario

Émissions de l'avis de projet : Ville de Lakeshore, Comté d'Essex, le 18 mars 2015

Promoteur : Le projet est proposé par SP Belle River Wind LP, au nom de son associée SP Belle River Wind GP Inc. (« Belle River Wind »). Belle River Wind est une co-entreprise détenue par Pattern Renewable Holdings Canada, ULC (« Pattern Development ») et Samsung Renewable Energy, Inc. (« Samsung Renewable Energy »).

Description du projet : Étant une installation d'énergie renouvelable, le Projet est soumis aux dispositions de la Partie V.0.1 de la Loi sur la protection de l'environnement (la « Loi ») et du Règlement de l'Ontario 359/09 (le « Règlement »). Le projet nécessite une autorisation de projet d'énergie renouvelable (APER) avant la construction. Conformément Sections 15 et 18 du Règlement, cet avis est distribué avant la soumission de la demande d'autorisation au Ministère de l'Environnement et de l'Action en matière de changement climatique de l'Ontario (MOECC).

Conformément à la Loi et au Règlement, le Projet est considéré comme un parc éolien de classe 4. S'il est approuvé, le projet aura une puissance nominale maximale de 100 MW. Les principales composantes du projet sont illustrées au plan ci-dessous. Des informations supplémentaires sur le projet, incluant le rapport préliminaire de la description de Projet, sont disponibles en ligne au www.belleriverwind.com.

Avis de dépôt de rapports préliminaires APER : La version préliminaire du Rapport de Description de Projet a d'abord été rendue disponible le 20 août 2014. Conformément à la Section 18 du Règlement, le but de cet Avis est d'informer que des versions préliminaires des rapports et des études techniques qui seront soumises à l'appui de la demande APER (à l'exclusion du rapport de Consultation) sont disponibles pour examen public. Des copies du rapport d'impact sonore et du rapport préliminaire de plan de site du projet avaient préalablement été rendues publiques le 9 mars 2015.

Documents disponibles pour l'examen public : Conformément à la réglementation, des exemplaires des Rapports Préliminaires APER seront disponibles pour l'examen public à partir du 19 mars 2015 au bureau municipal de la Ville de Lakeshore (419 rue Notre-Dame, Belle River) et à la succursale Lakeshore du réseau de bibliothèques du Comté d'Essex (447 Renaud Line, Belle River). Les documents, disponibles en anglais, peuvent également être consultés en ligne au www.belleriverwind.com.

Avis de deuxième assemblée publique : conformément à la réglementation, une deuxième assemblée publique a été prévue afin de donner l'opportunité au public de revoir et commenter les études et les recherches qui ont été menées aux fins du Projet. Le but de cet avis est d'aviser le public 60 jours à l'avance de la tenue de cette assemblée. Cette assemblée est prévue est prévue comme suit :

Date : 20 mai 2015

Heure : 5:00 p.m. à 8:00 p.m.

Lieu : Centre Atlas Tube, Salle Renaud,
447 Renaud Line Road, Belle River ON N0R 1A0

Contact et information sur le projet :
Pour en savoir davantage sur le Projet ou pour vos
commentaires, veuillez contacter :

Courriel : info@belleriverwind.com

Jody Law, Promoteur du Projet
Pattern Development
100, Simcoe Street, Toronto, ON M5H 3G2
Tél : (416) 283-8029

Brian Edwards, Promoteur du Projet
Samsung Renewable Energy
2050, Derry Road West, Mississauga, ON L5N 0B9
Tél : (905) 501-5667

Marc Ross, Consultant / Chef de Projet
AECOM
105, Commerce Valley Drive West
Markham, ON L3T 7W3
Tél : (905) 747-7793



Ravens lead Stars in OMHA finals

Fred Groves

The Essex Minor Atoms are three periods away from winning the Ontario Minor Hockey Association championship.

With a pair of wins at home on the weekend, Ravens need one more victory to beat the Grimsby Stars in the six-game series.

At the Essex Centre Sports Complex on Sunday, the hosts won 4-1. Less than 24 hours later they made it six straight games without a loss as they hung on for a dramatic 4-3 win.

Game Three goes underway in Uxbridge at 4 p.m. and if a fourth game necessary it will be played the following day in Uxbridge.

"I told them we better win because it's my birthday and we want to celebrate the birthday cake," said Essex Ravens coach Andy Paquette.

In Sunday's game, the two teams exchanged goals until Essex's Alex Scher netted the winner

with just 1:05 left to play. Defenceman Charlie Paquette who had a strong game at both ends of the rink assisted. He also scored for the Ravens.

"We practice real hard and we implement systems," said Andy Paquette as to why the Minor Atoms team has done so well this season.

Essex eliminated Erie North Shore in the first round of the playoffs then in the quarterfinals beat Grimsby before knocking off Burlington to get to the finale.

"They are having the best year of their lives. They won a handful of games last year and this year have lost only a handful."

Also scoring for Essex, who led 3-2 after the second period, were Cameron Derksen and Adrian Harrison.

Essex Minor Hockey Association has got not one but two Atom teams in the OMHA 'A' championship and both are playing the Uxbridge Stars.

On Saturday, the Major Atoms from Essex tied 3-3 but the next day totally dominated and won 5-2.

In this one, the Ravens opened up the scoring less than three minutes into the game when Jake Zetlaff burst down the right side and let go with a wrist shot. It was 3-0 for the hosts after the first period as Tanner Garon connected with a nifty

backhand and Kyle Blean got his first of two.

Captain Jack Fuerth gave Essex a four-goal cushion in the third as he scored from close range.

The Major Atoms, who eliminated Riverside, Port Erie and then Oakville, have gone nine games without a loss. Essex is in Uxbridge on Saturday at 6:30 p.m.



Essex Major Atoms captain Jack Fuerth shoots and scores against the Stars.

Express CARE
Valvoline
QUICK LUBE

NO APPOINTMENT NECESSARY
Monday - Wed. 8am-6pm
Thursday 8am-7pm
Friday 8am-6pm
Saturday 8am-4pm
Independently Owned & Operated
New Car Warranty Approved
PMA, ARI, GE, ELMENT
FLEET APPROVED
Licensed Mechanic On Site

269 Talbot St. N., Essex (next to Billy's) 519-776-4949

Winners Announced!
CONGRATULATIONS!
To our Anniversary TV Draw Winner Terri Lawson
Thank you to everyone who participated in our celebration.

As our way to say thank you...
Show us this ad and
Receive 15% off
Your next service
(Expires April 4, 2015)

NOTICE: EMHA ANNUAL GENERAL MEETING:
WEDNESDAY, MARCH 25, 2015 • 7:00 PM
AT THE ESSEX RECREATION COMPLEX
— SWANEEEN ROOM

ATTN: GENERAL MEMBERS:

See EMHA Constitution for more details
Non Members please submit \$1.00 for registration voting purposes
In a sealed envelope, with your name and bring to meeting.

If you do not submit your Looonie prior to the start of the AGM, you will not be allowed to vote

EXECUTIVE NOMINATIONS:

- President
- 1st Vice President (House League Rep.)
- Secretary
- Risk Management Director
- Director of Coaching Development (1 year left in current term)
- Member Relations (1 year left in current term)

Submit Advances Nominations to the Secretary BEFORE March 23, 2015

Drop Off: At the EMHA Equipment Room Mail Slot BEFORE March 23, 2015.

Mail: EMHA Secretary
PO Box 111, Essex, ON, N8M 2Y2
Email: secretary@essexhockey.ca

Coaching Applications now being accepted for 2015-2016 season. Deadline is March 25, 2015.
Apply online only at www.essexhockey.ca



NOTICE OF DRAFT REA REPORTS AND SECOND PUBLIC MEETING for the Belle River Wind Project

Project Name: Belle River Wind Project (the "Project")

Project Location: The Project is located in the Town of Lakeshore, Essex County, Ontario

Notice Dated at: Town of Lakeshore and Essex County this, the 18th of March, 2015

Applicant: The Project is being proposed by SP Belle River Wind, LP, by its general partner, SP Belle River Wind, GP Inc. ("Belle River Wind"). Belle River Wind is a joint venture limited partnership owned by affiliates of Pattern Renewable Holdings Canada, ULC ("Pattern Development") and Samsung Renewable Energy, Inc. ("Samsung Renewable Energy").

Project Description: As a renewable energy facility, the Project is subject to the provisions of the Environmental Protection Act (the "Act") Part V.0.1 and Ontario Regulation 359/09, as amended (the "Regulation"), and requires a Renewable Energy Approval (REA) prior to construction. This notice is being distributed in accordance with Sections 15 and 16 of the Regulation prior to an application being submitted to the Ministry of the Environment and Climate Change (MOECC).

If approved, the Project would have a total maximum nameplate capacity of up to 100 megawatts (MW). As identified in the Act and Regulation, the Project is considered to be a Class 4 wind facility. This project is being proposed in accordance with the requirements of the Act and Regulation. The location of key Project components is shown in the map below. Additional information about the Project is available online at www.belleriverwind.com.

Notice of Draft REA Reports: The Draft Project Description Report was first made available August 20, 2014. Pursuant to Section 16 of the Regulation, the purpose of this Notice is to communicate that the draft copies of the reports and technical studies that will be submitted as part of the REA application (excluding the Consultation Report) are available for public review. Copies of the Noise Impact Assessment and Draft Site Plan Report for the Project were previously made available for review on March 9, 2015.

Documents for Public Review: In accordance with the Regulation, copies of the Draft REA Reports will be made available for public review starting on March 19, 2015 at the Town of Lakeshore Municipal Office (419 Notre Dame Street, Belle River), County of Essex Municipal Office (380 Fairview Avenue West, Essex) and Lakeshore Branch of the Essex County Library (447 Renaud Line Road, Belle River). The reports will also be made available for public review online at: www.belleriverwind.com. The documents will be available for review in English.

Notice of Second Public Meeting: In accordance with the Regulation, a second Public Meeting has been planned to provide an opportunity for the public to review and provide comments on the studies and investigations that have been conducted for the Project. The purpose of this notice is to provide the public with notification 60 days in advance of the meeting. The meeting is scheduled for the following:

Date: May 20, 2015
Time: 5:00 p.m. to 8:00 p.m.

Location: Atlas Tube Centre, Renaud Room
447 Renaud Line Road, Belle River, ON N0R 1A0

Project Contact Information:

To learn more about the Project or to provide feedback, please contact:

Project Email:
info@belleriverwind.com

Jody Law, Project Developer
Pattern Development
100 Simcoe Street
Toronto, ON M5H 3G2
Phone: (416) 263-8029

Brian Edwards, Project Developer
Samsung Renewable Energy
2050 Derry Road West
Mississauga, ON L5N 0B9
Phone: (905) 501-5667

Marc Rose, Project Manager
AECOM
105 Commerce Valley Drive West
Markham, ON L3T 7W3
Phone: (905) 747-7763



serving Lakeshore

Lakeshore News

Serving the community since 1948.

1116 Lesperance Road · Tecumseh · Ontario · N8N 1X2
PUBLISHED EVERY THURSDAY



how to reach us
519-735-2080
by fax **519-735-2082**

administration · circulation

Eunice Paradise · Administration · 519-735-2080 ext. 111
EParadise@postmedia.com
Amer Yahia · Administration · 519-735-2080 ext. 112
AYahia@postmedia.com

advertising

Gary Bensette · 519-735-2080 ext. 127
GBensette@postmedia.com

editorial

Matt Weingarden · 519-735-2080 ext. 128
MWeingarden@postmedia.com

general manager

Bob Thwaites · 519-735-2080 ext. 123
BThwaites@postmedia.com

deadlines

Display ads · Monday 4:30 pm
Classifieds · Friday 4:30 pm

letters to the editor

Lakeshore News welcomes your letters to the editor that are of interest to our residents. However, we reserve the right to edit for grammar, clarity and length or to reject letter over matters of libel, legality, taste or style. Letters must be signed with a daytime phone number of the writer attached.

Please mail your letters to:
Lakeshore News

1116 Lesperance Road, Tecumseh, ON N8N 1X2
or email: MWeingarden@postmedia.com

subscription rates

Postal delivery rates per year:
Locally \$40.00 • Within Canada \$47.00 • Within USA \$150.00

a member of

POSTMEDIA COMMUNITY PUBLISHING

United Way pays tribute to its most generous supporters

United Way/Centraide Windsor-Essex County welcomed almost 300 guests to celebrate and honour some of its most generous and dedicated supporters and the recipients of the 2014 I Believe in My Community Awards last week.



These prestigious awards are presented annually to workplaces, unions and individuals for outstanding contributions to the community through United Way.

"The I Believe in My Community Awards celebration is our way of saying thank you to our very generous supporters," said United Way/Centraide Windsor-Essex County CEO Lorraine Goddard.

"It's our opportunity recognize the dedicated individuals, volunteers, unions, and workplaces from Windsor and Essex County. Their support of United Way is heart-warming and a continued testament to the caring nature of our community."

Nine awards were presented to local organizations in recognition of their commitment to the community

through United Way.

During the event, Gary Parent, FCA Canada Inc., and Unifor Local 200 were also recognized with special awards for leadership and support of United Way.

Additionally, CS Wind Canada and the Leamington and Area Family Health Team were recognized as new supporters of United Way.

"It was an honour to lead such a dedicated group of volunteers this year in support of United Way," said Jack Robinson, chair of the United Way's 2014 campaign cabinet and area director of Unifor Windsor.

"Thousands of people in our community are getting the help they need when they need it most. We wouldn't be able to do this without the generous and incredible support of our donors and volunteers."

The celebration was generously supported by Caesars Windsor and Unifor Locals 200, 444 & 2458, as well as the following sponsors: AM800 CKLW, The Windsor Star, Deloitte, WFCU Windsor Family Credit Union, Netmon Inc., Accucaps Industries, and the University of Windsor.

Nominations were collected earlier this year and reviewed by a volunteer selection committee.



NOTICE OF DRAFT REA REPORTS AND SECOND PUBLIC MEETING for the Belle River Wind Project

Project Name: Belle River Wind Project (the "Project")

Project Location: The Project is located in the Town of Lakeshore, Essex County, Ontario

Notice Dated at: Town of Lakeshore and Essex County this, the 18th of March, 2015

Applicant: The Project is being proposed by SP Belle River Wind, LP, by its general partner, SP Belle River Wind, GP Inc. ("Belle River Wind"). Belle River Wind is a joint venture limited partnership owned by affiliates of Pattern Renewable Holdings Canada, ULC ("Pattern Development") and Samsung Renewable Energy, Inc. ("Samsung Renewable Energy").

Project Description: As a renewable energy facility, the Project is subject to the provisions of the *Environmental Protection Act* (the "Act") Part V.0.1 and Ontario Regulation 359/09, as amended (the "Regulation"), and requires a Renewable Energy Approval (REA) prior to construction. This notice is being distributed in accordance with Sections 15 and 16 of the Regulation prior to an application being submitted to the Ministry of the Environment and Climate Change (MOECC).

If approved, the Project would have a total maximum nameplate capacity of up to 100 megawatts (MW). As identified in the Act and Regulation, the Project is considered to be a Class 4 wind facility. This project is being proposed in accordance with the requirements of the Act and Regulation. The location of key Project components is shown in the map below. Additional information about the Project is available online at www.belleriverwind.com.

Notice of Draft REA Reports: The Draft Project Description Report was first made available August 20, 2014. Pursuant to Section 16 of the Regulation, the purpose of this Notice is to communicate that the draft copies of the reports and technical studies that will be submitted as part of the REA application (excluding the Consultation Report) are available for public review. Copies of the Noise Impact Assessment and Draft Site Plan Report for the Project were previously made available for review on March 9, 2015.

Documents for Public Review: In accordance with the Regulation, copies of the Draft REA Reports will be made available for public review starting on March 19, 2015 at the Town of Lakeshore Municipal Office (419 Notre Dame Street, Belle River), County of Essex Municipal Office (360 Fairview Avenue West, Essex) and Lakeshore Branch of the Essex County Library (447 Renaud Line Road, Belle River). The reports will also be made available for public review online at: www.belleriverwind.com. The documents will be available for review in English.

Notice of Second Public Meeting: In accordance with the Regulation, a second Public Meeting has been planned to provide an opportunity for the public to review and provide comments on the studies and investigations that have been conducted for the Project. The purpose of this notice is to provide the public with notification 60 days in advance of the meeting. The meeting is schedule for the following:

Date: May 20, 2015
Time: 5:00 p.m. to 8:00 p.m.

Location: Atlas Tube Centre, Renaud Room
447 Renaud Line Road, Belle River, ON N0R 1A0

Project Contact Information:

To learn more about the Project or to provide feedback, please contact:

Project Email:
info@belleriverwind.com

Jody Law, Project Developer
Pattern Development
100 Simcoe Street
Toronto, ON M5H 3G2
Phone: (416) 263-8029

Brian Edwards, Project Developer
Samsung Renewable Energy
2050 Derry Road West
Mississauga, ON L5N 0B9
Phone: (905) 501-5667

Marc Rose, Project Manager
AECOM
105 Commerce Valley Drive West
Markham, ON L3T 7W3
Phone: (905) 747-7793



Your Targeting Report

Mailing Campaign Details

02-27-2015



Mailing ID DA00D33277505834943

Thank you for taking advantage of our targeting service - a one stop solution designed to help you get the most out of your direct mail campaigns.

- Anonymous Precision Targeter users will have their reports saved and accessible for 30 days from the day the report has been generated.
- Signed-In Precision Targeter users will have their reports saved and accessible for 13 months from the day the report has been generated.

Inside, find comprehensive insight into your selected trade area, including:

Variables	
Address Attributes	Houses, Apartments, Farms and Businesses
Number of Mail Pieces	9696
Urban / Rural	All
Estimated Delivery Cost	\$1731.13
Delivery Mode (Route Type)	Letter Carrier (LC), Rural Route (RR), Suburban Service (SS), General Delivery (GD), Lock Box (LB), Call For (CF), Motorized Route (MR), Direct (DR)
Valid for Mailings From	15-02-13 To 15-03-12
Householder Types	Consumer's Choice

Not only does the attached report provide an in-depth look at your chosen trade area, it also harnesses the power of data analytics to help maximize your return on investment (ROI) by providing you with:

- A Route Ranking report that prioritizes your postal route selections based on your demographic criteria, enabling you to deliver your message to the people most likely to respond;
- A Postal Station Summary report that indicates the facilities responsible for your mailing;
- Maps, Impact Assessment, and many other campaign-enhancing resources.

Do you want to further improve your direct mailings? Take advantage of our suite of data and targeting solutions:

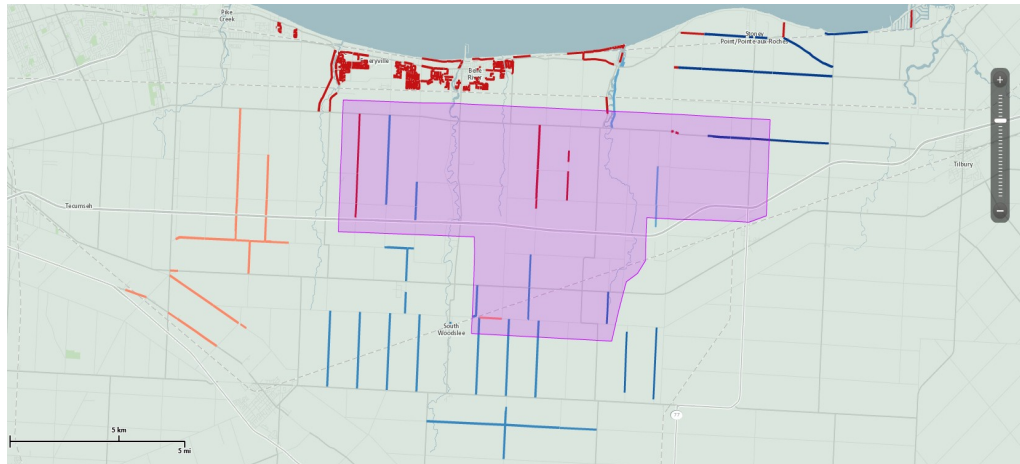
Canada Complete Lists	Data Management Services	Analytics
Canada Complete lists provide one of the largest reach in Canada, drawing from Canada Post's mail delivery database of over 13 million residential addresses and close to a million business addresses. With our additional targeting filters, supplement your list by pinpointing specific audiences that best match what your best prospects look like.	With the help of Canada Post's Data Management Services, you can improve your address accuracy, identify movers, and suppress duplicate records. This will ensure clean, current, and accurate mail files - in doing so, you will have less undeliverable mail and an improved ROI.	Our analytics experts will work with you to ensure your consumer data delivers optimal results. For example, we can help identify highest-potential customers and prospects through penetration analysis, location intelligence, segmentation, modeling and profiling.

Questions? Contact your Canada Post Sales Representative or our Commercial Service Network at 1-866-757-5480.

Your Targeting Report

Route Ranking Report

Reaching the right people with the right message is a key driver of campaign success. The map below shows your selected trade area and the routes that make up your coverage. The routes are colour coded according to the penetration of your selected demographic variable(s) to show how closely it matches your ideal prospect.



Your Targeting Report

Route Ranking Report



Below you will find your Route Ranking Report, which provides you with a tabular view of the routes within your trade area ranked according to the value of the selected demographic variable(s). By looking at the "Cumulative Penetration" and the "Cumulative Points of Call" columns, you can easily determine which routes you need to target in order to meet your desired quota.

FSA	Delivery Mode (Route)	Depot	All Points Of Call	Cumulative Points of Call
N0R	SS0001	BELLE RIVER PO	996	996
N0R	LB0001	BELLE RIVER PO	955	1951
N0R	SS0003	BELLE RIVER PO	774	2725
N0R	SS0006	BELLE RIVER PO	627	3352
N0R	SS0002	BELLE RIVER PO	620	3972
N0R	RR0001	BELLE RIVER PO	522	4494
N0R	RR0003	BELLE RIVER PO	514	5008
N0R	SS0004	BELLE RIVER PO	502	5510
N0R	SS0005	BELLE RIVER PO	461	5971
N0R	RR0002	MAIDSTONE PO	447	6418
N0R	RR0001	SOUTH WOODSLEE PO	441	6859
N0R	RR0003	MAIDSTONE PO	434	7293
N0R	RR0001	POINTE AUX ROCHES PO	403	7696
N0R	RR0002	BELLE RIVER PO	316	8012
N0R	RR0004	SOUTH WOODSLEE PO	312	8324
N0R	LB0001	POINTE AUX ROCHES PO	267	8591
N0R	RR0001	ST JOACHIM PO	261	8852
N0R	RR0002	SOUTH WOODSLEE PO	238	9090
N0R	RR0001	RUSCOM STATION PO	162	9252
N0R	RR0001	MAIDSTONE PO	137	9389
N0R	LB0001	SOUTH WOODSLEE PO	116	9505
N0R	LB0001	ST JOACHIM PO	99	9604
N0R	LB0001	MAIDSTONE PO	92	9696

Your Targeting Report

Postal Station Summary



To avoid transportation charges, you may want to deposit your Unaddressed Admail™ directly at each postal station responsible for your mailing. The table below provides you with a list of post offices where you need to induct your mailing, and how many pieces must be deposited at each location.

HOUSES	APARTMENTS	FARMS	BUSINESSES	TOTAL POINTS OF CALL
--------	------------	-------	------------	----------------------

BELLE RIVER PO500 NOTRE DAME ST BELLE RIVER ON N0R 1A0

TOTAL	6091	68	0	128	6287
--------------	------	----	---	-----	------

MAIDSTONE PO11860 TALBOT RD MAIDSTONE ON N0R 1K0

TOTAL	909	0	130	71	1110
--------------	-----	---	-----	----	------

POINTE AUX ROCHES PO6695 TECUMSEH RD POINTE AUX ROCHES ON N0R 1N0

TOTAL	602	15	38	15	670
--------------	-----	----	----	----	-----

RUSCOM STATION PORR0001 RUSCOM STATION ON N0R 1R0

TOTAL	141	0	21	0	162
--------------	-----	---	----	---	-----

ST JOACHIM PO2735 COUNTY RD 42 ST JOACHIM ON N0R 1S0

TOTAL	333	0	20	7	360
--------------	-----	---	----	---	-----

SOUTH WOODSLEE PO73 KING ST SOUTH WOODSLEE ON N0R 1V0

TOTAL	783	24	284	16	1107
--------------	-----	----	-----	----	------

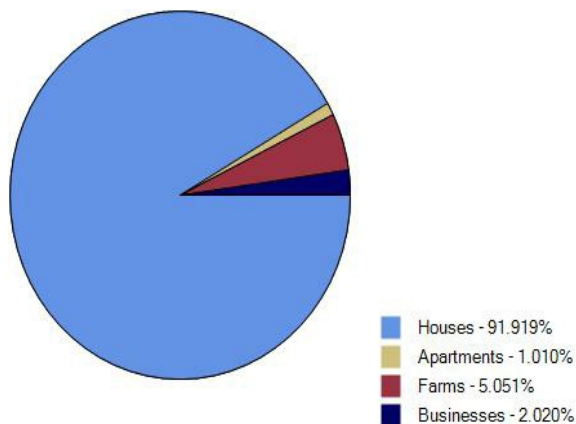
GRAND TOTAL	8859	107	493	237	9696
--------------------	------	-----	-----	-----	------

Your Targeting Report

Trade Area Marketing Insights

Below, you will find some insights to your trade area. The provided charts give a simple visual representation of some key characteristics of your target area in order to help you better understand the dynamics of your market.

Address Attributes



This chart provides you with a breakdown of various delivery points within your trade area, based on your selected address attributes.

The majority of your area is characterized by:
Houses

Did you know...

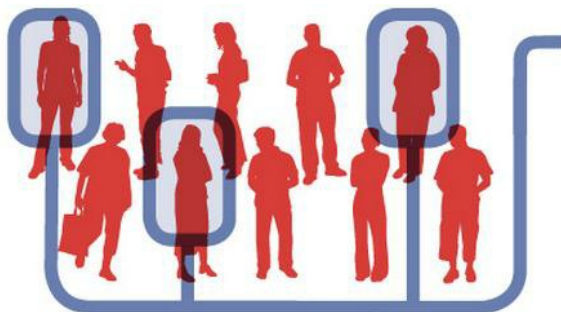
We can help you discover and harvest untapped market potential? We do so by generating a list of additional high value routes, typically located just outside your selected trade area, that meet or exceed your targeting criteria. To take advantage of this offering, simply accept our high value walk suggestions within the online application or request this feature when having an analysis run by our team of geospatial analysts.

Your Targeting Report

Powerful Data & Targeting



Looking for more ways to harvest the campaign-boosting powers of data and analytics? We have options...



It's time to be more direct. Reach more prospects with Canada Complete lists from Canada Post

Canada's best list just got even better. Our lists provide one of the largest reach in Canada, drawing from our mail delivery database of over 13 million residential addresses and close to a million business addresses. By customizing your mail with a name and/or an address you can provide an instant boost to open rates and responses. With our additional targeting filters, supplement your list by pinpointing specific audiences based on geographic, demographic, and lifestyle criteria that best match what your best prospects look like.

Why choose Canada Complete?

- We have more addresses than anyone else and with the best market penetration in the country
- Gain access to the most complete list that can provide nationwide access to apartments and suite numbers
- Validated addresses that you know are deliverable - save money by reducing returned mail
- Exclude existing customers by suppressing addresses you already have - only pay for the records you need
- Canada's best list for accessing Canadian New Movers - a segment that spends \$11B annually
- Enhance your list with a range of unique and exclusive targeting filters to reach your best audience

Ensure your mailing list is valid

Is bad address data hindering your campaign performance? Thanks to our **Smart Data Cleaner**, it doesn't have to. This easy-to-use online tool lets you clean and update your customer and prospect mailing lists. Not sure if your list needs a scrub? Get a free diagnostic first.

Reach people by name and boost response

Unaddressed Admail™ is a powerful and effective marketing solution. To take your targeting to a whole new level use Addressed Admail™, and reach Canadians by name and address at their place of residence or work. Studies have shown that 87% of Canadians are likely to read mail that is addressed to them personally, and that addressed direct mail garners three times as much attention as unaddressed direct mail.

Turn your customer data into actionable insight with our Advanced Analytics Services

Data is the fuel that drives campaign performance, but it can sometimes be a challenge to analyze and take action on it. That's where our dedicated team of analytics experts comes in. Through **penetration analysis, location intelligence, segmentation, modeling and profiling** they can help enhance your response potential by identifying your highest potential prospects.

Want to learn more about our powerful Data & Targeting Solutions?

Visit our website: **www.canadapost.ca/datatargetingsolutions**

email us at: **data.targetingsolutions@canadapost.ca**

If you wish to speak with one of our Data and Targeting specialists, call us at **1-877-281-4137**

1. **Address Attributes:** Describes the types of buildings present in your trade area, whether they are houses, apartments, farms, and/or businesses.
2. **All Points of Call:** The total number of physical locations (points of call) receiving your mailing on a given letter carrier's route, which can be houses, apartments, farms and/or businesses based on your selection criteria.
3. **Average Value:** The average value (%) of the chosen Statistics Canada demographic variables that can be associated with the letter carrier's route, which provides you with insight into your recipients.
4. **Cumulative Penetration:** The cumulative percentage of penetration associated with the letter carrier's routes based on the selected demographic variables.
5. **Cumulative Points of Call:** The cumulative point of call count associated with the letter carrier's routes, which has been calculated by adding the previous Delivery Mode rows in the report.
6. **Delivery Mode:** The area served by a letter carrier.
7. **Depot:** A postal facility established for the processing and delivery of mail. Example: Etobicoke, Ontario.
8. **Forward Sortation Area (FSA):** The first three characters (alpha-numeric-alpha) of a Postal Code ^{OM}, which represent a geographic area. Example: M9W
9. **Postal Station Summary:** This report indicates which postal stations are responsible for your targeted routes. The count of each point of call type (houses, apartments, farms, and/or businesses) is displayed for each depot. The total point of call count, listed at the end of the report, denotes the number of houses, apartments, farms, and/or businesses associated with each postal station.
10. **Route ID:** This represents the identifier assigned to each letter carrier's route. Its primary use is for the coordination of the mail delivery.
11. **Target Variables:** A report can have a minimum of one to a maximum of three Statistics Canada demographic variables selected. These variables are displayed in the value columns as a percentage (%) that can be associated with that entire Delivery Mode.
12. **Total Points of Call:** The total number of houses, apartments, farms, and/or businesses (based on your selection) associated with the depot in your Postal Station Summary. This number indicates how many pieces are required for each depot.
13. **Total:** This row represents the sum of each dwelling type (houses, apartments, farms, and/or businesses) within a depot.
14. **Valid for Mailings From:** Due to monthly route restructures, the results found within this report are valid between these dates. Mailing outside of these dates could cause delivery problems or pose a risk of non-delivery.

Wong Ken, Michelle

From: Rose, Marc
Sent: Tuesday, March 31, 2015 2:40 PM
Subject: draft Renewable Energy Approval reports for Belle River Wind Project available for review
Attachments: Notice_2015-03-12_BR_English_Draft REA Reports and Public Meeting 2-6032....pdf

Good afternoon,

You are receiving this email because you have previously contacted the Belle River Wind Project ("the Project") team or you requested that we provide you with public notifications for the Project via email at the first public meeting.

A public notice was distributed by mail regarding the **Draft Renewable Energy Approval (REA) Reports and Second Public Meeting** for the Belle River Wind Project. A copy of the notice is attached for your reference.

The REA Reports will be submitted as part of the REA application, according to Ontario Regulation 359/09. In addition, a second public meeting will be held on **May 20, 2015** to provide an opportunity for the public to provide comments on the studies and investigations that have been conducted for the Project.

Copies of the Draft REA Reports are available for public review at the Town of Lakeshore Municipal Office (419 Notre Dame Street, Belle River), County of Essex Municipal Office (360 Fairview Avenue West, Essex) and the Lakeshore Branch of the Essex County Library System (447 Renaud Line Road, Belle River). The reports are also available for public review online at: www.belleriverwind.com.

If you wish to be removed from the project contact list, [please click the following link](#).

Sincerely,

Marc Rose, Consultant Project Manager
On behalf of the Belle River Wind Project Team

Marc Rose, MES, MCIP, RPP
Senior Environmental Planner
Environment
D: 905-747-7793 C: 416-579-8628
marc.rose@aecom.com

AECOM
105 Commerce Valley Drive West, 7th Floor
Markham, Ontario L3T 7W3
T: 905-886-7022 F: 905-886-9494
www.aecom.com

This e-mail and any attachments contain AECOM confidential information that may be proprietary or privileged. If you receive this message in error or are not the intended recipient, you should not retain, distribute, disclose or use any of this information and you should destroy the e-mail and any attachments or copies.