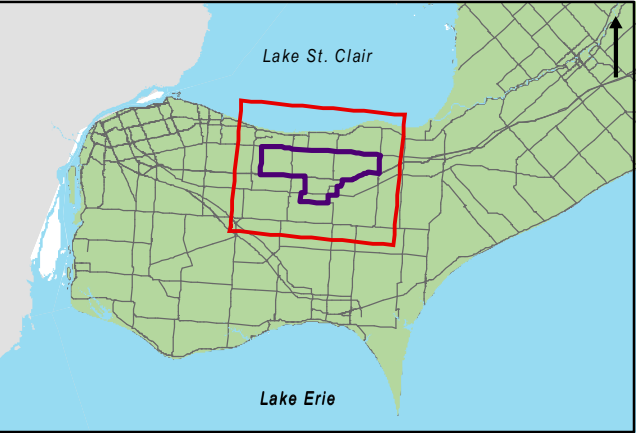
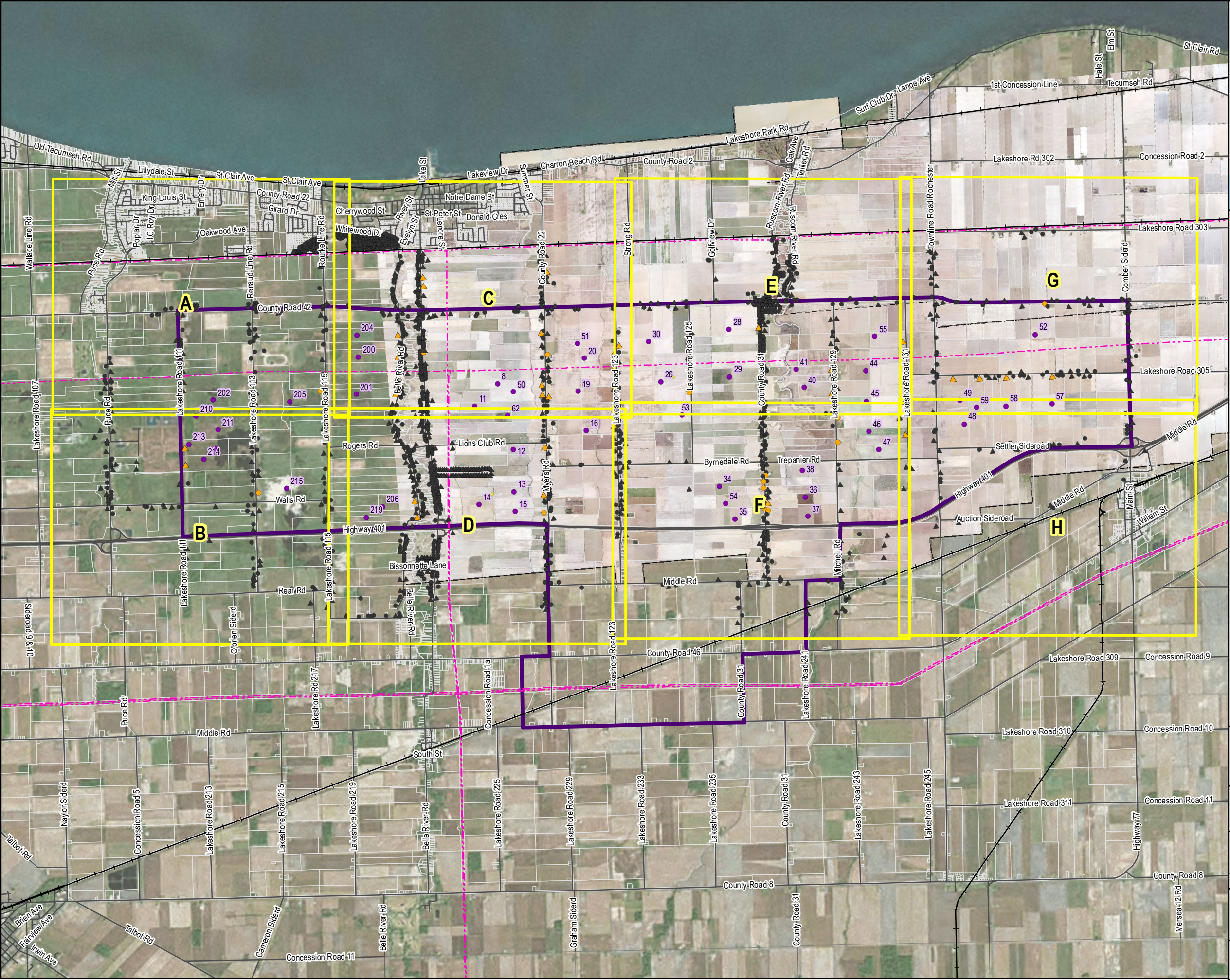


Appendix A

Project Location and Noise Receptors



Noise Receptors within 2km of Turbines

Existing Receptors

- Non-Participating
- Participating

Vacant Lot Receptors

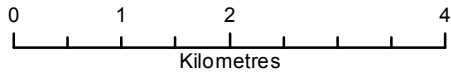
- ▲ Non-Participating
- ▲ Participating

Project Layout

- Turbine
- Meteorological Tower

Base Layers

- Roads
- Rail Roads
- - - Existing Transmission Line
- Property Boundaries
- ▭ Project Study Area
- ▭ Detailed Map Area



Belle River Wind Project

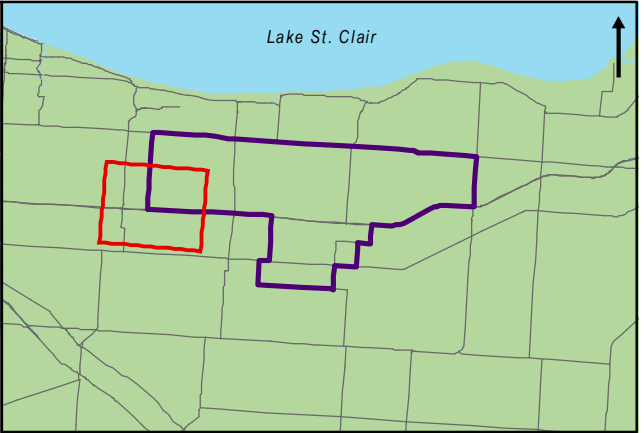
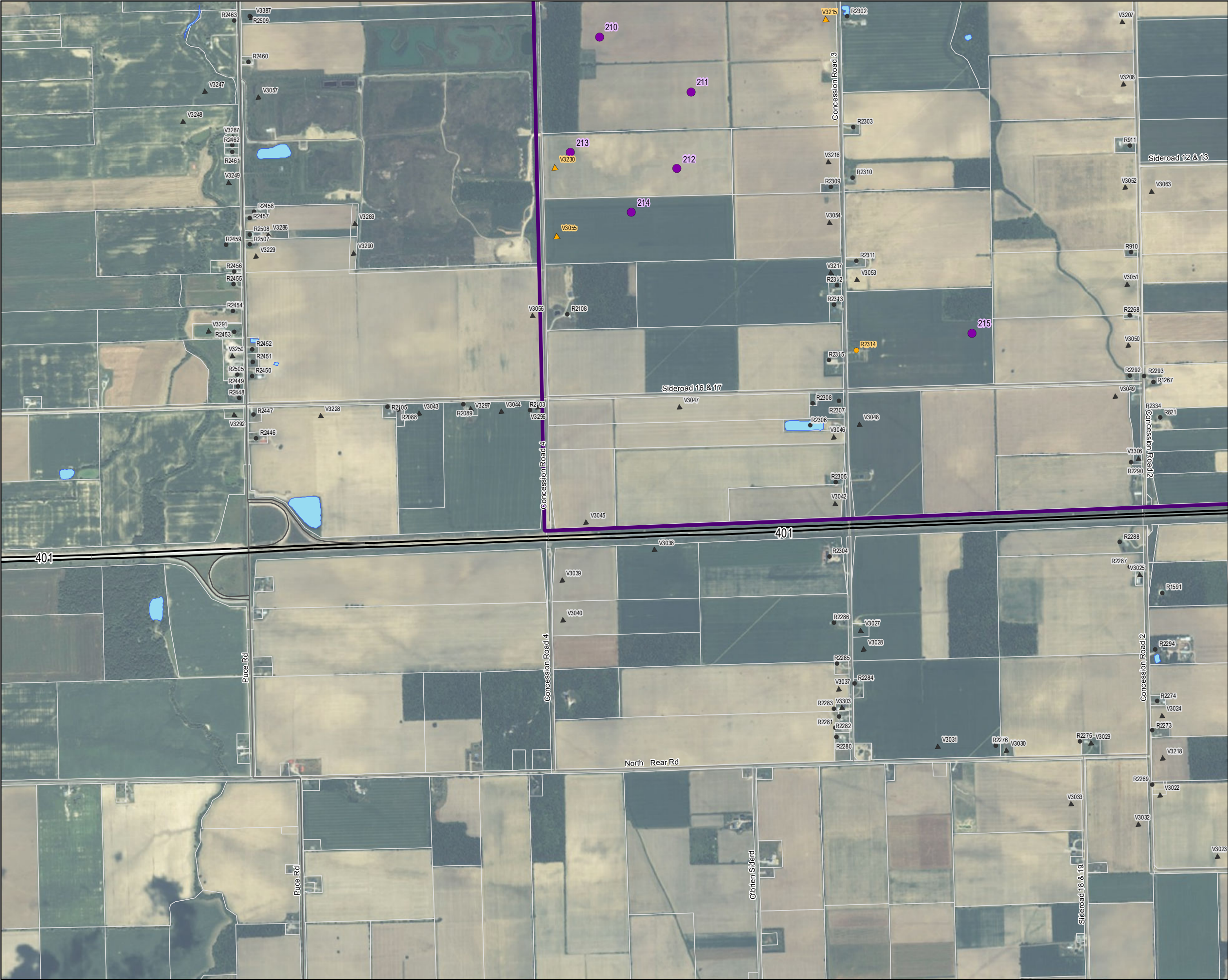
Project Location and Noise Receptors

May 2015	1:70,000	Datum: NAD 83, Zone 17 Source: OBM
P#: 60321891	V#: 001	



Figure 2-4

This drawing has been prepared for the use of AECOM's client and may not be used, reproduced or relied upon by third parties, except as agreed by AECOM and its client, as required by law or for use by governmental reviewing agencies. AECOM accepts no responsibility, and denies any liability whatsoever, to any party that modifies this drawing without AECOM's express written consent.



Noise Receptors within 2km of Turbines

Existing Receptors

- Non-Participating
- Participating

Vacant Lot Receptors

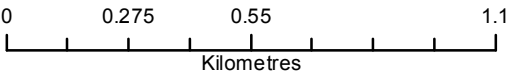
- ▲ Non-Participating
- ▲ Participating

Project Layout

- Turbine
- Meteorological Tower

Base Layers

- Roads
- Rail Roads
- Existing Transmission Line
- Property Boundaries
- Project Study Area



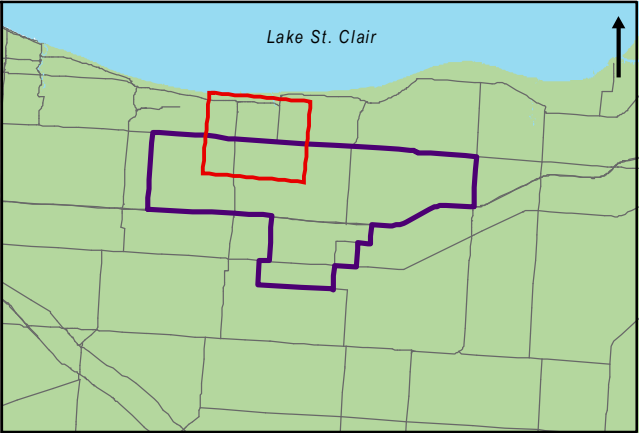
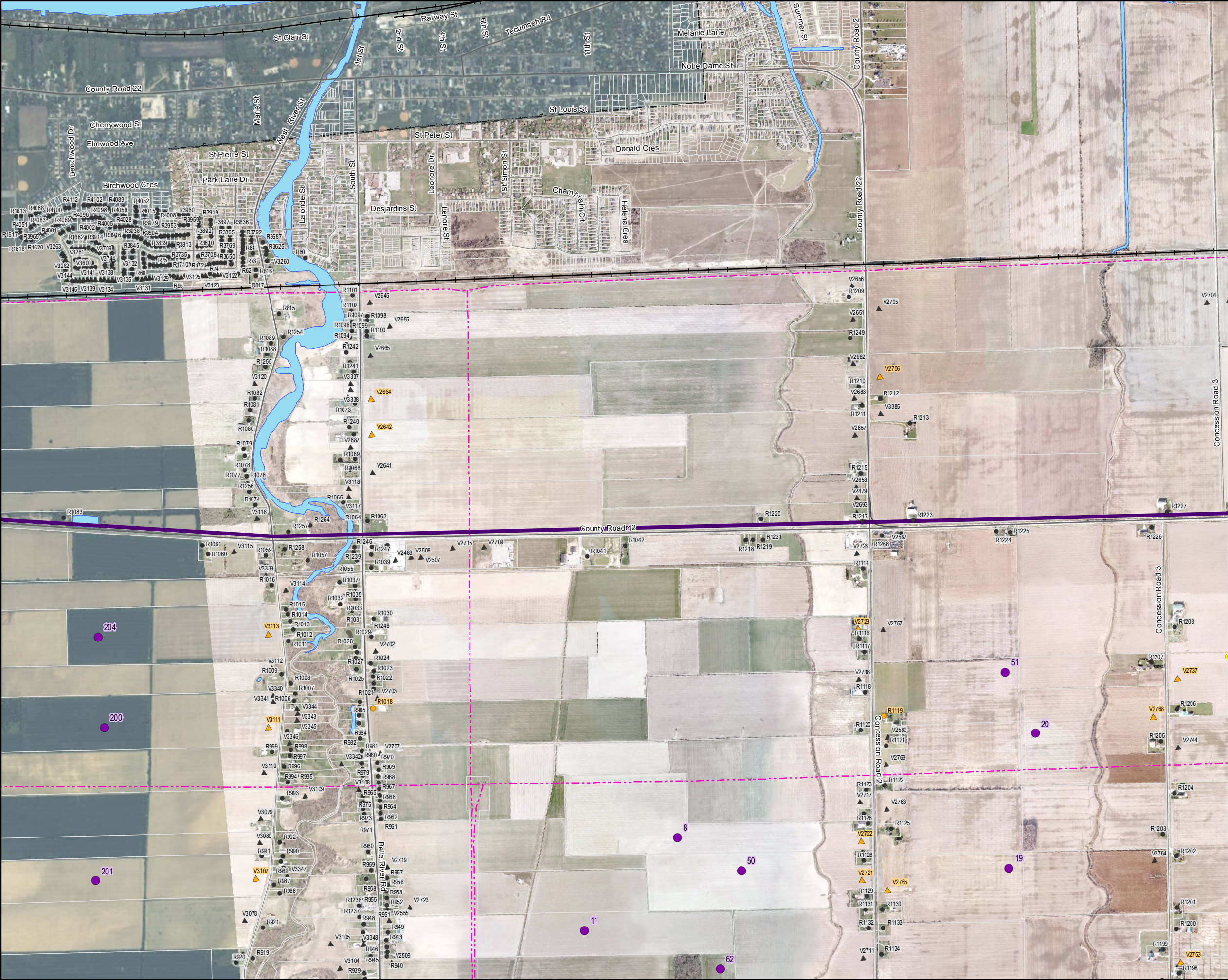
Belle River Wind Project

Project Location and Noise Receptors - B

May 2015	1:17,000	Datum: NAD 83, Zone 17 Source: OBM
P#: 60321891	V#: 002	



This drawing has been prepared for the use of AECOM's client and may not be used, reproduced or relied upon by third parties, except as agreed by AECOM and its client, as required by law or for use by governmental reviewing agencies. AECOM accepts no responsibility, and denies any liability whatsoever, to any party that modifies this drawing without AECOM's express written consent.



Noise Receptors within 2km of Turbines

Existing Receptors

- Non-Participating
- Participating

Vacant Lot Receptors

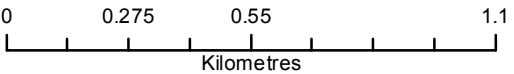
- ▲ Non-Participating
- ▲ Participating

Project Layout

- Turbine
- Meteorological Tower

Base Layers

- Roads
- Rail Roads
- Existing Transmission Line
- Property Boundaries
- Project Study Area



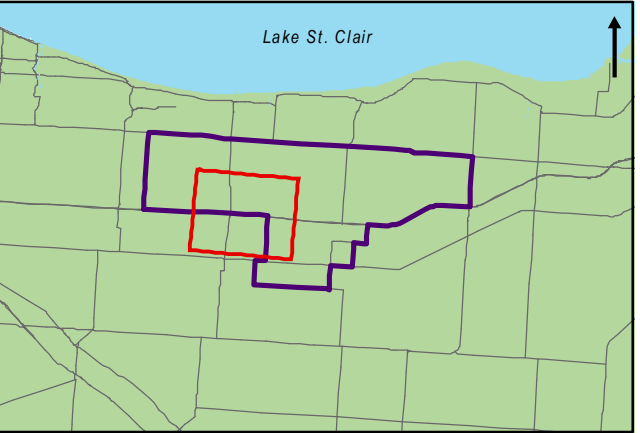
Belle River Wind Project

Project Location and Noise Receptors - C

May 2015	1:17,000	Datum: NAD 83, Zone 17 Source: OBM
P#: 60321891	V#: 002	



This drawing has been prepared for the use of AECOM's client and may not be used, reproduced or relied upon by third parties, except as agreed by AECOM and its client, as required by law or for use by governmental reviewing agencies. AECOM accepts no responsibility, and denies any liability whatsoever, to any party that modifies this drawing without AECOM's express written consent.



Noise Receptors within 2km of Turbines

Existing Receptors

- Non-Participating
- Participating

Vacant Lot Receptors

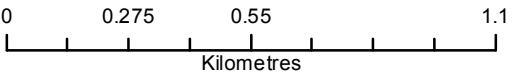
- ▲ Non-Participating
- ▲ Participating

Project Layout

- Turbine
- Meteorological Tower

Base Layers

- Roads
- Rail Roads
- Existing Transmission Line
- Property Boundaries
- Project Study Area



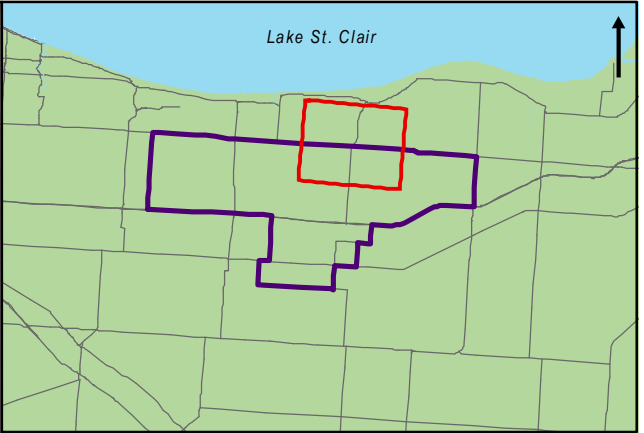
Belle River Wind Project

Project Location and Noise Receptors - D

May 2015	1:17,000	Datum: NAD 83, Zone 17 Source: OBM
P#: 60321891	V#: 002	



This drawing has been prepared for the use of AECOM's client and may not be used, reproduced or relied upon by third parties, except as agreed by AECOM and its client, as required by law or for use by governmental reviewing agencies. AECOM accepts no responsibility, and denies any liability whatsoever, to any party that modifies this drawing without AECOM's express written consent.



Noise Receptors within 2km of Turbines

Existing Receptors

- Non-Participating
- Participating

Vacant Lot Receptors

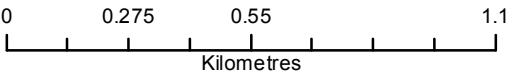
- ▲ Non-Participating
- ▲ Participating

Project Layout

- Turbine
- Meteorological Tower

Base Layers

- Roads
- Rail Roads
- Existing Transmission Line
- Property Boundaries
- Project Study Area



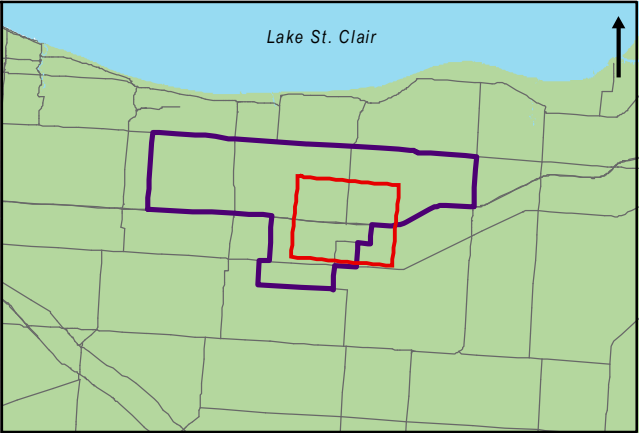
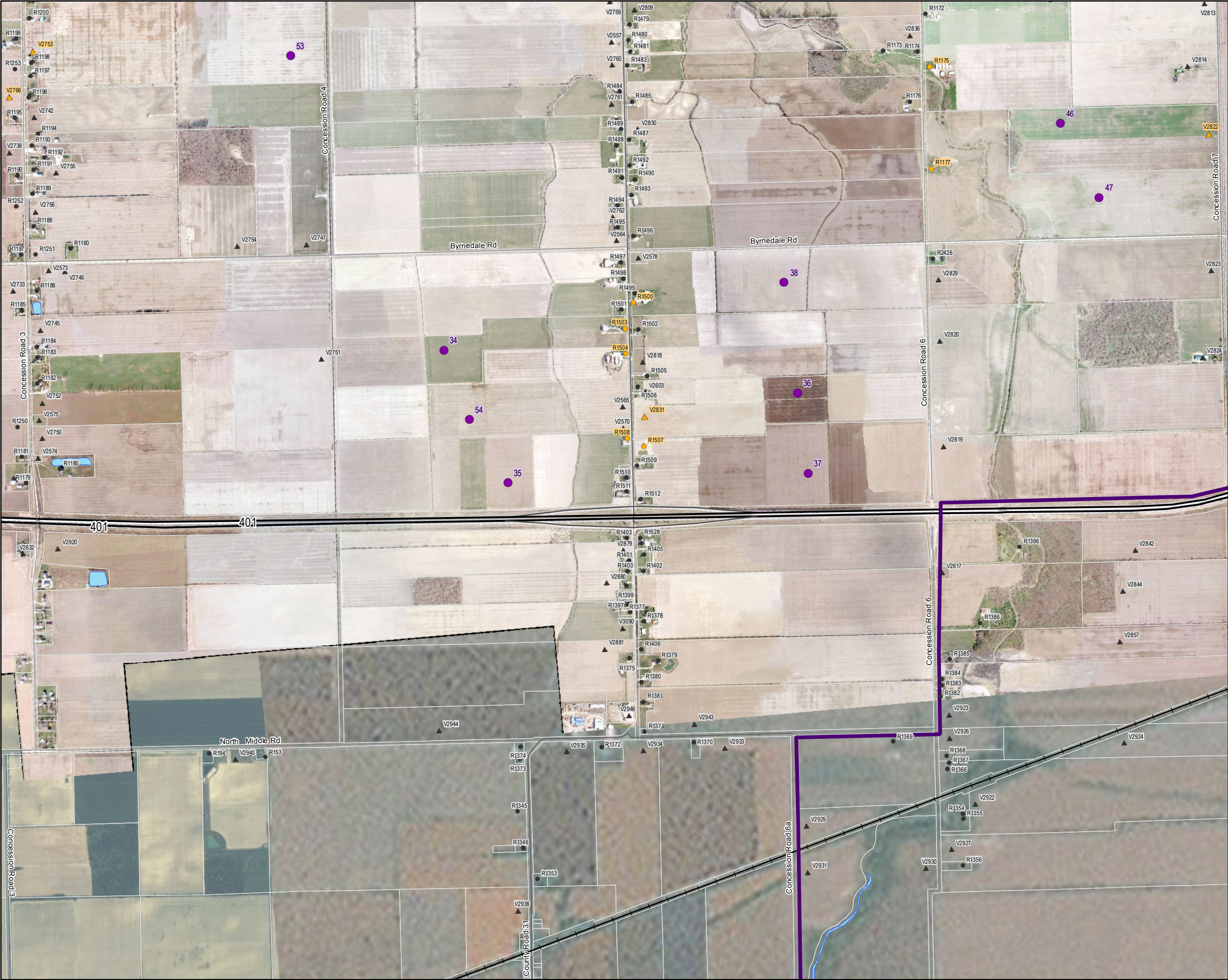
Belle River Wind Project

Project Location and Noise Receptors - E

May 2015	1:17,000	Datum: NAD 83, Zone 17 Source: OBM
P#: 60321891	V#: 002	



This drawing has been prepared for the use of AECOM's client and may not be used, reproduced or relied upon by third parties, except as agreed by AECOM and its client, as required by law or for use by governmental reviewing agencies. AECOM accepts no responsibility, and denies any liability whatsoever, to any party that modifies this drawing without AECOM's express written consent.

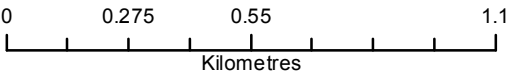


Noise Receptors within 2km of Turbines

- Existing Receptors
- Non-Participating
 - Participating
- Vacant Lot Receptors
- ▲ Non-Participating
 - ▲ Participating

- Project Layout
- Turbine
 - Meteorological Tower

- Base Layers
- Roads
 - Rail Roads
 - Existing Transmission Line
 - Property Boundaries
 - Project Study Area



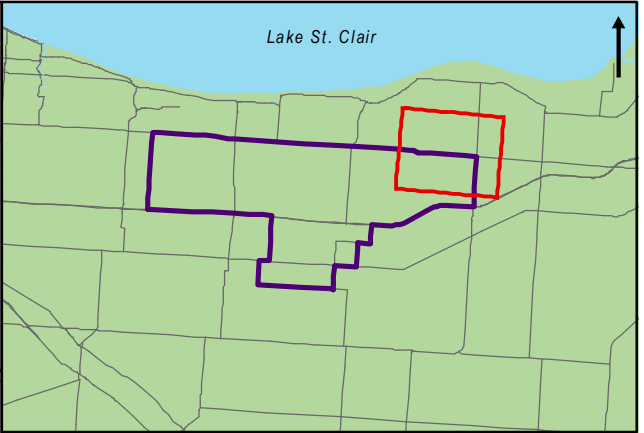
Belle River Wind Project

Project Location and Noise Receptors - F

May 2015	1:17,000	Datum: NAD 83, Zone 17 Source: OBM
P#: 60321891	V#: 002	



This drawing has been prepared for the use of AECOM's client and may not be used, reproduced or relied upon by third parties, except as agreed by AECOM and its client, as required by law or for use by governmental reviewing agencies. AECOM accepts no responsibility, and denies any liability whatsoever, to any party that modifies this drawing without AECOM's express written consent.



Noise Receptors within 2km of Turbines

Existing Receptors

- Non-Participating
- Participating

Vacant Lot Receptors

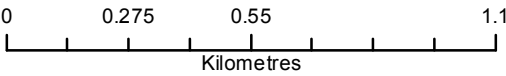
- ▲ Non-Participating
- ▲ Participating

Project Layout

- Turbine
- Meteorological Tower

Base Layers

- Roads
- Rail Roads
- Existing Transmission Line
- Property Boundaries
- Project Study Area



Belle River Wind Project

Project Location and Noise Receptors - G

May 2015	1:17,000	Datum: NAD 83, Zone 17 Source: OBM
P#: 60321891	V#: 002	



This drawing has been prepared for the use of AECOM's client and may not be used, reproduced or relied upon by third parties, except as agreed by AECOM and its client, as required by law or for use by governmental reviewing agencies. AECOM accepts no responsibility, and denies any liability whatsoever, to any party that modifies this drawing without AECOM's express written consent.

