



Samsung Renewable Energy Inc. and
Pattern Energy

7C Additional Stage 2 Property Assessment
Supplementary Documentation

For
South Kent Wind Project

Additional Stage 2 Property Assessment

**South Kent Wind Project
Romney, East Tilbury, Raleigh, Harwich and Howard Townships
Former Kent County
Municipality of Chatham-Kent, Ontario**

Supplementary Documentation

Prepared for:

Hatch Ltd.

4343 Queen Street, Suite 500

Niagara Falls, Ontario L2E 7J7

Tel: (905) 374-0701

Fax: (905) 375-1157

Email: KArnold@hatch.ca

Website: www.hatch.ca

Archaeological Licence P347 (Andrew Riddle)

MTC PIF 347-102-2011

ASI File 11EA-258

April 25, 2012

REVISED REPORT



Archaeological Services Inc.

528 Bathurst St.
Toronto, Ontario
Canada, M5S 2P9

T 416-966-1069

F 416-966-9723

info@iASI.to/www.iASI.to

TABLE OF CONTENTS

1.0	MAPS	1
2.0	GPS COORDINATES FOR SITE LOCATIONS	36
3.0	ABORIGINAL ENGAGEMENT IN ARCHAEOLOGY	37
4.0	WORKS CITED.....	39

LIST OF MAPS

Figure 1:	South Kent Wind Project — Archaeological Sites within Turbine P002	2
Figure 2:	South Kent Wind Project — Archaeological Sites within Turbine P006	3
Figure 3:	South Kent Wind Project — Archaeological Sites within Turbine P010.....	4
Figure 4:	South Kent Wind Project — Archaeological Sites within Turbines P017 and 173	5
Figure 5:	South Kent Wind Project — Archaeological Sites within Turbines P019 and 021	6
Figure 6:	South Kent Wind Project — Archaeological Sites within Turbines P028 and 029	7
Figure 7:	South Kent Wind Project — Archaeological Sites within Turbine P031.....	8
Figure 8:	South Kent Wind Project — Archaeological Sites within Turbine P036	9
Figure 9:	South Kent Wind Project — Archaeological Sites within Turbine P060	10
Figure 10:	South Kent Wind Project — Archaeological Sites within Turbine P063	11
Figure 11:	South Kent Wind Project — Archaeological Sites within Turbine P065	12
Figure 12:	South Kent Wind Project — Archaeological Sites within Turbine P071.....	13
Figure 13:	South Kent Wind Project — Archaeological Sites within Turbine P073.....	14
Figure 14:	South Kent Wind Project — Archaeological Sites within Turbine P075.....	15
Figure 15:	South Kent Wind Project — Archaeological Sites within Turbine P079	16
Figure 16:	South Kent Wind Project — Archaeological Sites within Turbine P081.....	17
Figure 17:	South Kent Wind Project — Archaeological Sites within Turbine P093	18
Figure 18:	South Kent Wind Project — Archaeological Sites within Turbine P097	19
Figure 19:	South Kent Wind Project — Archaeological Sites within Turbine P103.....	20
Figure 20:	South Kent Wind Project — Archaeological Sites within Turbine P104.....	21
Figure 21:	South Kent Wind Project — Archaeological Sites within Turbines P105 and P118	22
Figure 22:	South Kent Wind Project — Archaeological Sites within Turbines P106, P107 and P171	23
Figure 23:	South Kent Wind Project — Archaeological Sites within Turbine P124.....	24
Figure 24:	South Kent Wind Project — Archaeological Sites within Turbine P133.....	25
Figure 25:	South Kent Wind Project — Archaeological Sites within Turbine P139.....	26
Figure 26:	South Kent Wind Project — Archaeological Sites within Turbine P140.....	27
Figure 27:	South Kent Wind Project — Archaeological Sites within Turbine P146.....	28
Figure 28:	South Kent Wind Project — Archaeological Sites within Turbine P150.....	29
Figure 29:	South Kent Wind Project — Archaeological Sites within Turbine P154.....	30
Figure 30:	South Kent Wind Project — Archaeological Sites within Turbine P166.....	31
Figure 31:	South Kent Wind Project — Archaeological Sites within Electrical Connection Layout (CLSA-5).....	32
Figure 32:	South Kent Wind Project — Archaeological Sites within Electrical Connection Layout (CLSA-4).....	33
Figure 33:	South Kent Wind Project — Archaeological Sites within Electrical Connection Layout (CLSA-4).....	34
Figure 34:	South Kent Wind Project — Archaeological Sites within Former Connection Layout (CLSA-2)	35



1.0 MAPS

The following set of maps illustrates the location of all archaeological sites discovered during the various Stage 2 property assessments for the South Kent Wind Project (the “Project”); all site locations are in relation to the most recent Layout L19. Site descriptions and other pertinent information relating to the additional Stage 2 assessment work are contained in the licence report for the Project submitted to the Ministry of Tourism, Culture and Sport (ASI 2012). The specific archaeological sites associated with that work can be found in Figures 1, 8, 19, 21, 31 and 33.





Site Boundary	Turbine (L19R1) Feb 23 2012	Access Road (L19R1) Feb 23 2012
20 metre Protective Buffer (Stage 3 Sites)	Laydown Area (L19R1) Feb 23 2012	Reference Landmark
50 metre Construction Monitoring Zone (Stage 3 Sites)	Collector Line (L19R1) Feb 23 2012	

Archaeological Services Inc. 528 Bathurst St. Toronto, Ontario Canada, M5S 2P9 T 416-966-1069 F 416-966-9723 info@IASI.to/www.IAS±.to	BASE: Pattern Wind Energy LIO 2010	

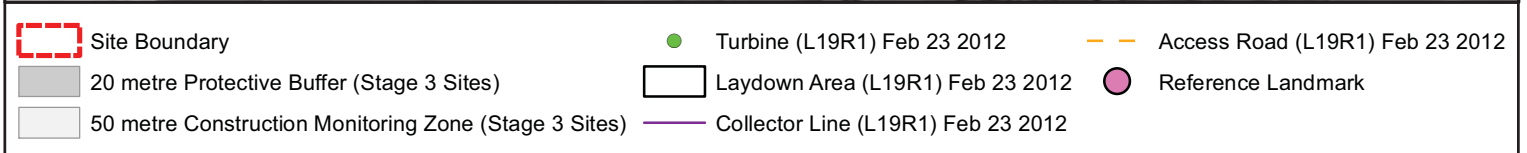
Figure 1: South Kent Wind Project- Archaeological Sites Within Turbine P002



Site Boundary	Turbine (L19R1) Feb 23 2012	Access Road (L19R1) Feb 23 2012
20 metre Protective Buffer (Stage 3 Sites)	Laydown Area (L19R1) Feb 23 2012	Reference Landmark
50 metre Construction Monitoring Zone (Stage 3 Sites)	Collector Line (L19R1) Feb 23 2012	

Archaeological Services Inc. 528 Bathurst St. Toronto, Ontario Canada, M5S 2P9 T 416-966-1069 F 416-966-9723 info@IASI.to/www.IAS±.to	BASE: Pattern Wind Energy LIO 2010	<table border="1"> <tr> <td data-bbox="1166 1885 1507 1961"> </td> </tr> <tr> <td data-bbox="1036 1969 1474 2011"> ASI PROJECT NO.: 11EA-258 DATE: Apr 4, 2012 </td> <td data-bbox="1328 1969 1474 2011"> DRAWN BY: B.W. FILE: 11EA-258_Fig2 </td> </tr> </table>		ASI PROJECT NO.: 11EA-258 DATE: Apr 4, 2012	DRAWN BY: B.W. FILE: 11EA-258_Fig2
ASI PROJECT NO.: 11EA-258 DATE: Apr 4, 2012	DRAWN BY: B.W. FILE: 11EA-258_Fig2				

Figure 2: South Kent Wind Project- Archaeological Sites Within Turbine P006





 Archaeological Services Inc. 528 Bathurst St. Toronto, Ontario Canada, M5S 2P9 T 416-966-1069 F 416-966-9723 info@IASI.to/www.IAS±.to	BASE: Pattern Wind Energy LIO 2010	0 200  Meters
		ASI PROJECT NO.: 11EA-258 DATE: Apr 4, 2012

Figure 3: South Kent Wind Project- Archaeological Sites Within Turbine P010

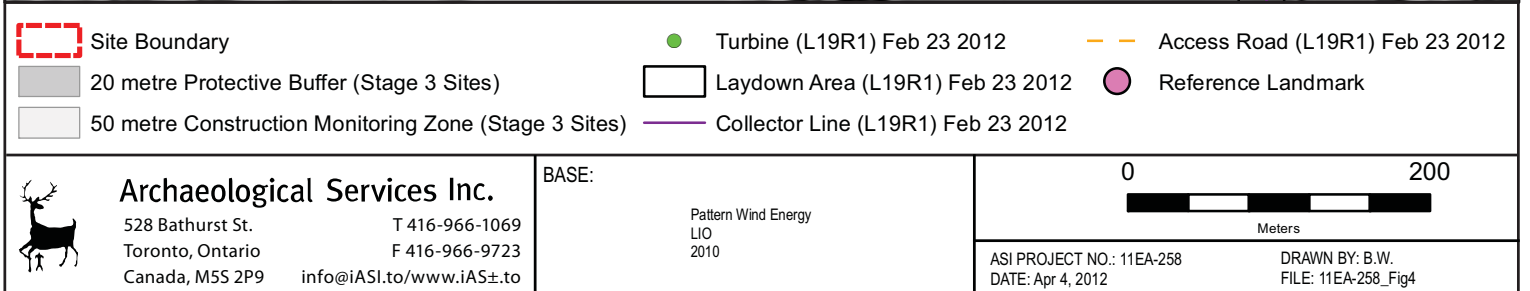


Figure 4: South Kent Wind Project- Archaeological Sites Within Turbines P017 and P173



- Site Boundary
- 20 metre Protective Buffer (Stage 3 Sites)
- 50 metre Construction Monitoring Zone (Stage 3 Sites)
- Turbine (L19R1) Feb 23 2012
- Laydown Area (L19R1) Feb 23 2012
- Collector Line (L19R1) Feb 23 2012
- - - Access Road (L19R1) Feb 23 2012
- Reference Landmark

Archaeological Services Inc.
 528 Bathurst St. Toronto, Ontario Canada, M5S 2P9
 T 416-966-1069 F 416-966-9723
 info@IASI.to/www.IAS±.to

BASE:
 Pattern Wind Energy LIO 2010

0 200
 Meters

ASI PROJECT NO.: 11EA-258
 DATE: Apr 4, 2012

DRAWN BY: B.W.
 FILE: 11EA-258_Fig5

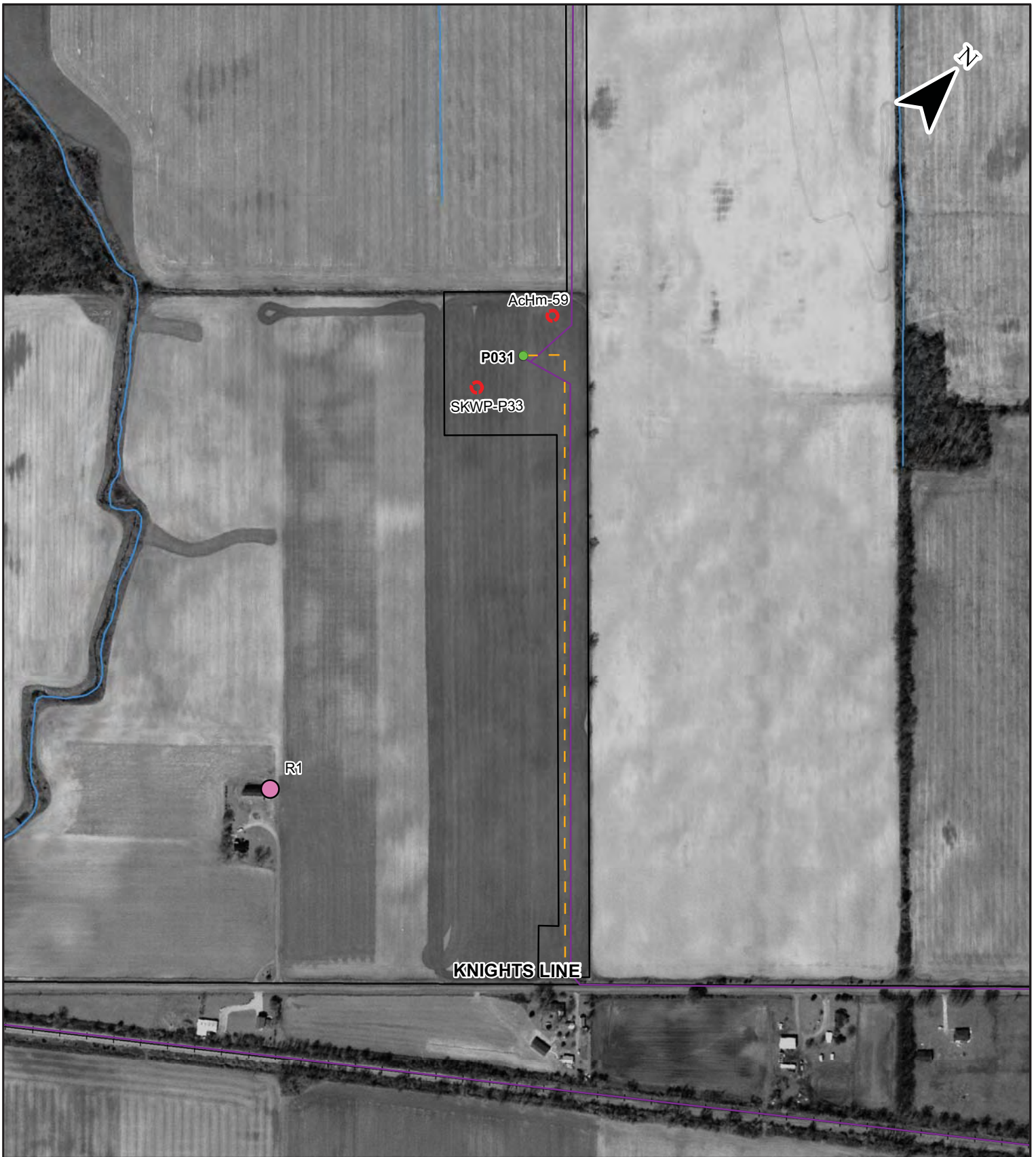
Figure 5: South Kent Wind Project- Archaeological Sites Within Turbines P019 and P021



Site Boundary	Turbine (L19R1) Feb 23 2012	Access Road (L19R1) Feb 23 2012
20 metre Protective Buffer (Stage 3 Sites)	Laydown Area (L19R1) Feb 23 2012	Reference Landmark
50 metre Construction Monitoring Zone (Stage 3 Sites)	Collector Line (L19R1) Feb 23 2012	

<p>Archaeological Services Inc. 528 Bathurst St. Toronto, Ontario Canada, M5S 2P9 T 416-966-1069 F 416-966-9723 info@IASI.to/www.IAS±.to</p>	<p>BASE: Pattern Wind Energy LIO 2010</p>	<p>0 200 Meters</p> <p>ASI PROJECT NO.: 11EA-258 DATE: Apr 4, 2012</p> <p>DRAWN BY: B.W. FILE: 11EA-258_Fig6</p>
--	--	---

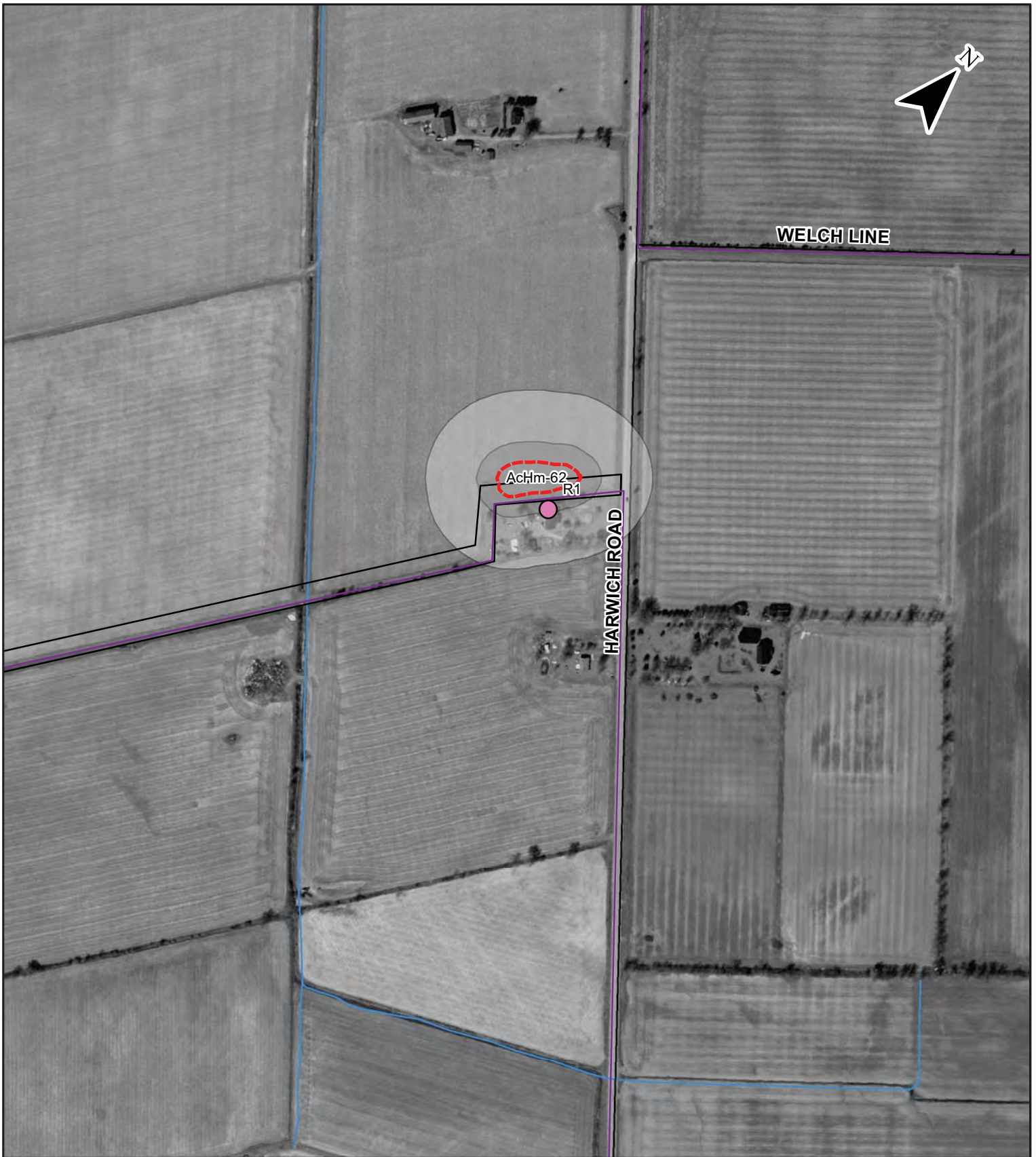
Figure 6: South Kent Wind Project- Archaeological Sites Within Turbines P028 and P029



Site Boundary	Turbine (L19R1) Feb 23 2012	Access Road (L19R1) Feb 23 2012
20 metre Protective Buffer (Stage 3 Sites)	Laydown Area (L19R1) Feb 23 2012	Reference Landmark
50 metre Construction Monitoring Zone (Stage 3 Sites)	Collector Line (L19R1) Feb 23 2012	

<p>Archaeological Services Inc. 528 Bathurst St. Toronto, Ontario Canada, M5S 2P9 T 416-966-1069 F 416-966-9723 info@IASI.to/www.IAS±.to</p>	<p>BASE: Pattern Wind Energy LIO 2010</p>	<p>0 200 Meters</p> <p>ASI PROJECT NO.: 11EA-258 DATE: Apr 4, 2012</p> <p>DRAWN BY: B.W. FILE: 11EA-258_Fig7</p>
--	--	---

Figure 7: South Kent Wind Project- Archaeological Sites Within Turbine P031



- Site Boundary
- 20 metre Protective Buffer (Stage 3 Sites)
- 50 metre Construction Monitoring Zone (Stage 3 Sites)
- Turbine (L19R1) Feb 23 2012
- Laydown Area (L19R1) Feb 23 2012
- Collector Line (L19R1) Feb 23 2012
- Access Road (L19R1) Feb 23 2012
- Reference Landmark

Archaeological Services Inc.
 528 Bathurst St. Toronto, Ontario Canada, M5S 2P9
 T 416-966-1069 F 416-966-9723
 info@IASI.to/www.IAS±.to

BASE:
 Pattern Wind Energy
 LIO
 2010

0 200

 Meters

ASI PROJECT NO.: 11EA-258
 DATE: Apr 4, 2012

DRAWN BY: B.W.
 FILE: 11EA-258_Fig8

Figure 8: South Kent Wind Project- Archaeological Sites Within Turbine P036



Site Boundary	Turbine (L19R1) Feb 23 2012	Access Road (L19R1) Feb 23 2012
20 metre Protective Buffer (Stage 3 Sites)	Laydown Area (L19R1) Feb 23 2012	Reference Landmark
50 metre Construction Monitoring Zone (Stage 3 Sites)	Collector Line (L19R1) Feb 23 2012	

<p>Archaeological Services Inc. 528 Bathurst St. Toronto, Ontario Canada, M5S 2P9 T 416-966-1069 F 416-966-9723 info@IASI.to/www.IAS±.to</p>	<p>BASE: Pattern Wind Energy LIO 2010</p>	<p>0 200 Meters</p> <p>ASI PROJECT NO.: 11EA-258 DATE: Apr 4, 2012</p> <p>DRAWN BY: B.W. FILE: 11EA-258_Fig9</p>
--	--	---

Figure 9: South Kent Wind Project- Archaeological Sites Within Turbine P060



- Site Boundary
- 20 metre Protective Buffer (Stage 3 Sites)
- 50 metre Construction Monitoring Zone (Stage 3 Sites)
- Turbine (L19R1) Feb 23 2012
- Laydown Area (L19R1) Feb 23 2012
- Collector Line (L19R1) Feb 23 2012
- — Access Road (L19R1) Feb 23 2012
- Reference Landmark

Archaeological Services Inc.
 528 Bathurst St. Toronto, Ontario Canada, M5S 2P9
 T 416-966-1069 F 416-966-9723
 info@IASI.to/www.IAS±.to

BASE:
 Pattern Wind Energy
 LIO
 2010

0 200
 Meters

ASI PROJECT NO.: 11EA-258
 DATE: Apr 4, 2012

DRAWN BY: B.W.
 FILE: 11EA-258_Fig10

Figure 10: South Kent Wind Project- Archaeological Sites Within Turbine P063



- Site Boundary
- 20 metre Protective Buffer (Stage 3 Sites)
- 50 metre Construction Monitoring Zone (Stage 3 Sites)
- Turbine (L19R1) Feb 23 2012
- Laydown Area (L19R1) Feb 23 2012
- Collector Line (L19R1) Feb 23 2012
- - - Access Road (L19R1) Feb 23 2012
- Reference Landmark

Archaeological Services Inc.
 528 Bathurst St. Toronto, Ontario Canada, M5S 2P9
 T 416-966-1069 F 416-966-9723
 info@IASI.to/www.IAS±.to

BASE:
 Pattern Wind Energy
 LIO
 2010

0 200

 Meters

ASI PROJECT NO.: 11EA-258
 DATE: Apr 5, 2012

DRAWN BY: B.W.
 FILE: 11EA-258_Fig11

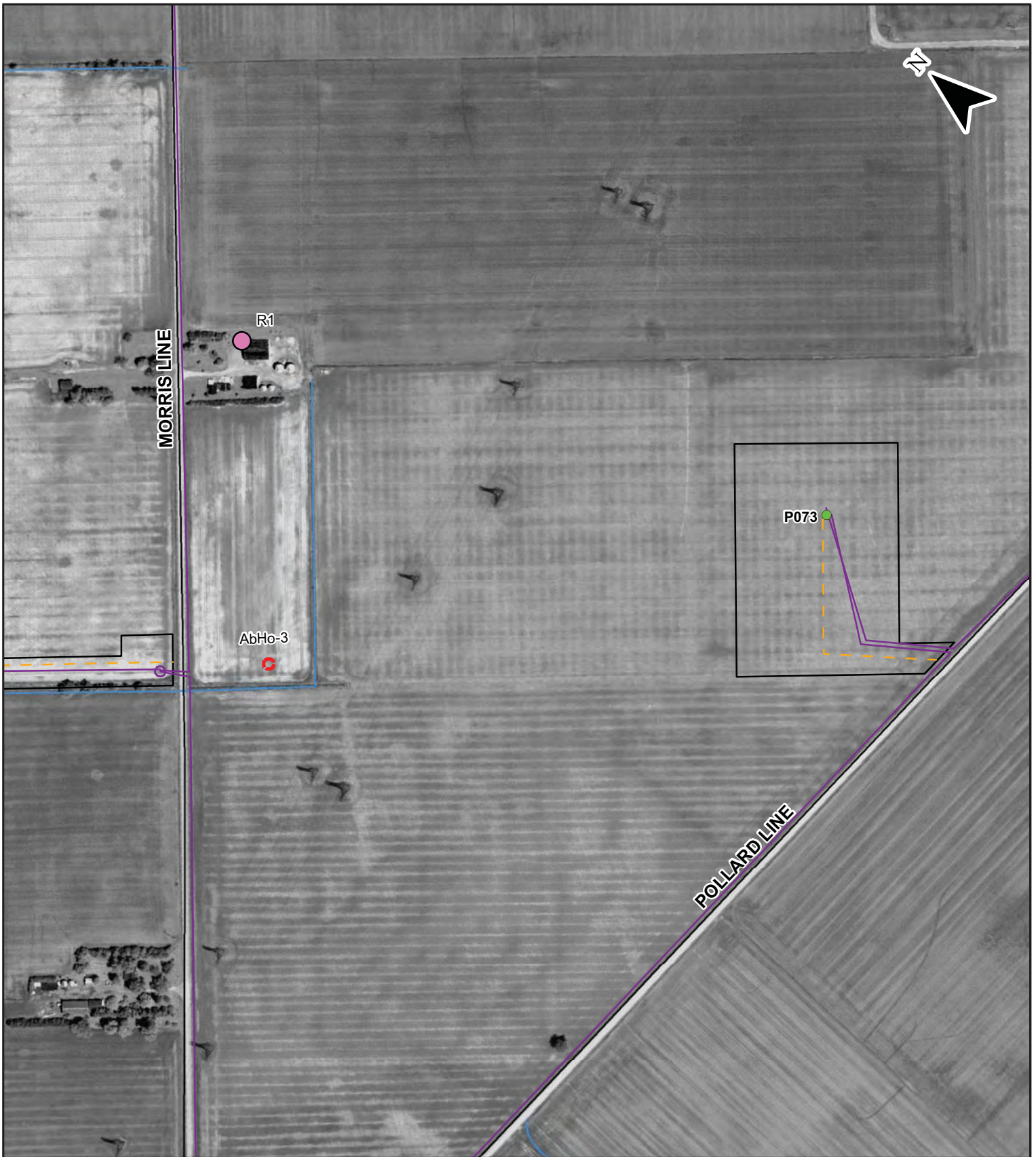
Figure 11: South Kent Wind Project- Archaeological Sites Within Turbine P065



- Site Boundary
- 20 metre Protective Buffer (Stage 3 Sites)
- 50 metre Construction Monitoring Zone (Stage 3 Sites)
- Turbine (L19R1) Feb 23 2012
- Laydown Area (L19R1) Feb 23 2012
- Collector Line (L19R1) Feb 23 2012
- Access Road (L19R1) Feb 23 2012
- Reference Landmark

Archaeological Services Inc. 528 Bathurst St. Toronto, Ontario Canada, M5S 2P9 T 416-966-1069 F 416-966-9723 info@IASI.to/www.IAS±.to	BASE: Pattern Wind Energy LIO 2010	0 200 Meters	ASI PROJECT NO.: 11EA-258 DATE: Apr 5, 2012 DRAWN BY: B.W. FILE: 11EA-258_Fig12

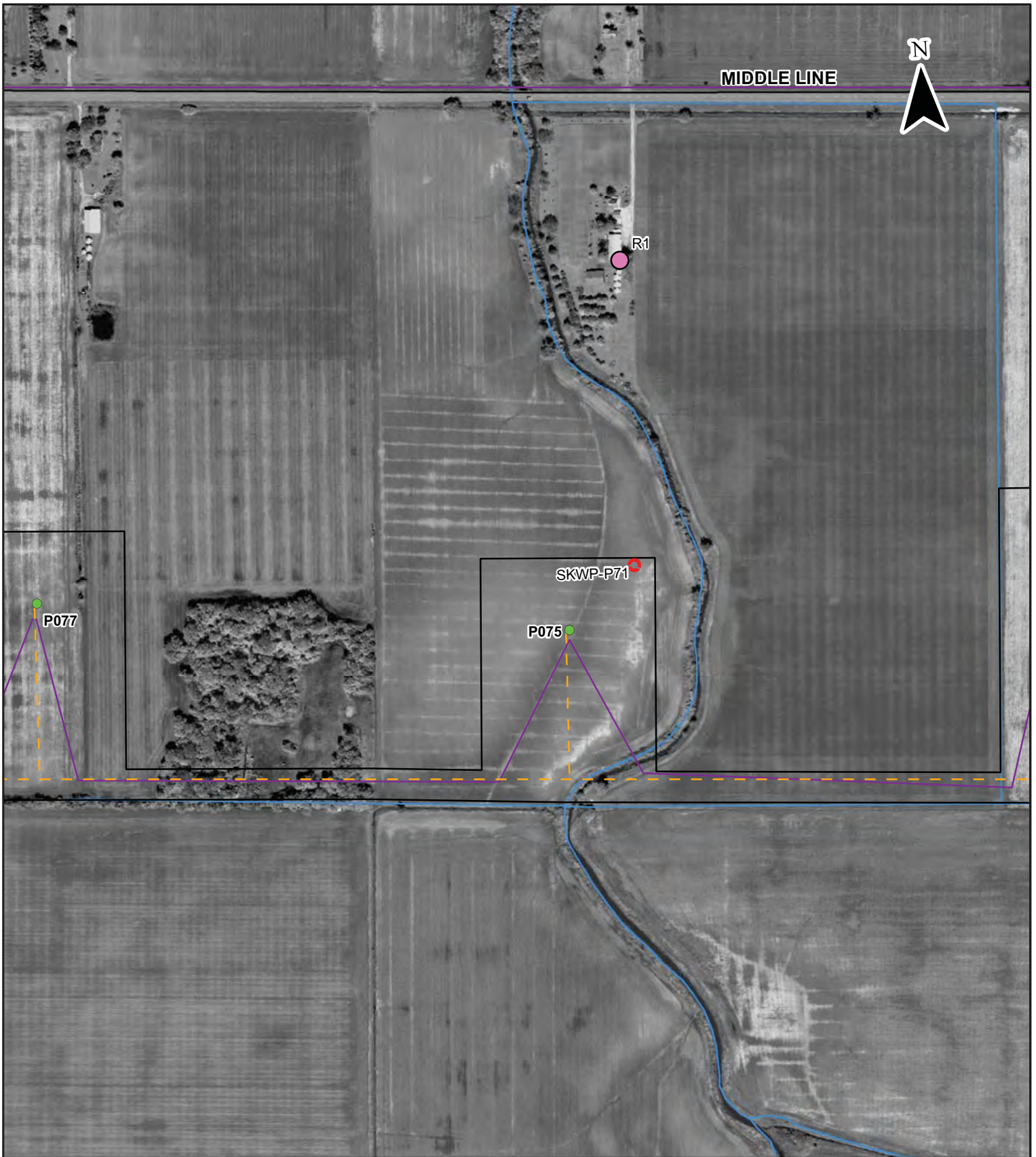
Figure 12: South Kent Wind Project- Archaeological Sites Within Turbine P071



Site Boundary	Turbine (L19R1) Feb 23 2012	Access Road (L19R1) Feb 23 2012
20 metre Protective Buffer (Stage 3 Sites)	Laydown Area (L19R1) Feb 23 2012	Reference Landmark
50 metre Construction Monitoring Zone (Stage 3 Sites)	Collector Line (L19R1) Feb 23 2012	

<p>Archaeological Services Inc. 528 Bathurst St. Toronto, Ontario Canada, M5S 2P9 T 416-966-1069 F 416-966-9723 info@IASI.to/www.iAS±.to</p>	<p>BASE: Pattern Wind Energy LIO 2010</p>	<p>0 200 Meters</p> <p>ASI PROJECT NO.: 11EA-258 DATE: Apr 5, 2012</p> <p>DRAWN BY: B.W. FILE: 11EA-258_Fig13</p>
--	--	--

Figure 13: South Kent Wind Project- Archaeological Sites Within Turbine P073



Site Boundary	Turbine (L19R1) Feb 23 2012	Access Road (L19R1) Feb 23 2012
20 metre Protective Buffer (Stage 3 Sites)	Laydown Area (L19R1) Feb 23 2012	Reference Landmark
50 metre Construction Monitoring Zone (Stage 3 Sites)	Collector Line (L19R1) Feb 23 2012	

Archaeological Services Inc. 528 Bathurst St. Toronto, Ontario Canada, M5S 2P9 T 416-966-1069 F 416-966-9723 info@IASI.to/www.IAS±.to	BASE: Pattern Wind Energy LIO 2010	0 200 Meters
		ASI PROJECT NO.: 11EA-258 DATE: Apr 5, 2012

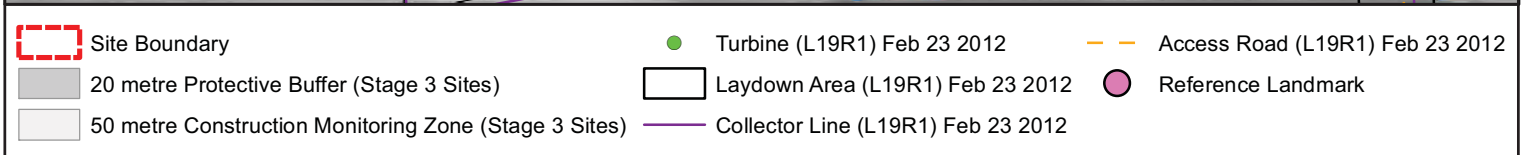
Figure 14: South Kent Wind Project- Archaeological Sites Within Turbine P075



Site Boundary	Turbine (L19R1) Feb 23 2012	Access Road (L19R1) Feb 23 2012
20 metre Protective Buffer (Stage 3 Sites)	Laydown Area (L19R1) Feb 23 2012	Reference Landmark
50 metre Construction Monitoring Zone (Stage 3 Sites)	Collector Line (L19R1) Feb 23 2012	

	Archaeological Services Inc. 528 Bathurst St. Toronto, Ontario Canada, M5S 2P9 T 416-966-1069 F 416-966-9723 info@IASI.to/www.IAS±.to	BASE: Pattern Wind Energy LIO 2010	0 200 Meters	ASI PROJECT NO.: 11EA-258 DATE: Apr 5, 2012 DRAWN BY: B.W. FILE: 11EA-258_Fig15
--	---	---	---------------------	--

Figure 15: South Kent Wind Project- Archaeological Sites Within Turbine P079





 Archaeological Services Inc. 528 Bathurst St. Toronto, Ontario Canada, M5S 2P9 T 416-966-1069 F 416-966-9723 info@IASI.to/www.IAS±.to	BASE: Pattern Wind Energy LIO 2010	0 200  Meters
	ASI PROJECT NO.: 11EA-258 DATE: Apr 5, 2012	

Figure 16: South Kent Wind Project- Archaeological Sites Within Turbine P081



Site Boundary	Turbine (L19R1) Feb 23 2012	Access Road (L19R1) Feb 23 2012
20 metre Protective Buffer (Stage 3 Sites)	Laydown Area (L19R1) Feb 23 2012	Reference Landmark
50 metre Construction Monitoring Zone (Stage 3 Sites)	Collector Line (L19R1) Feb 23 2012	

Archaeological Services Inc. 528 Bathurst St. Toronto, Ontario Canada, M5S 2P9 T 416-966-1069 F 416-966-9723 info@IASI.to/www.IAS±.to	BASE: Pattern Wind Energy LIO 2010	0 200 Meters
	ASI PROJECT NO.: 11EA-258 DATE: Apr 5, 2012	DRAWN BY: B.W. FILE: 11EA-258_Fig17

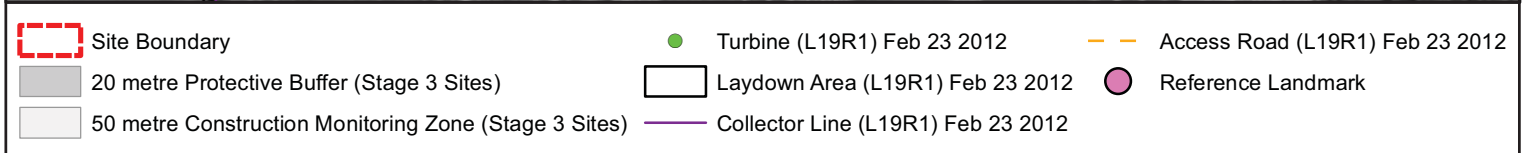
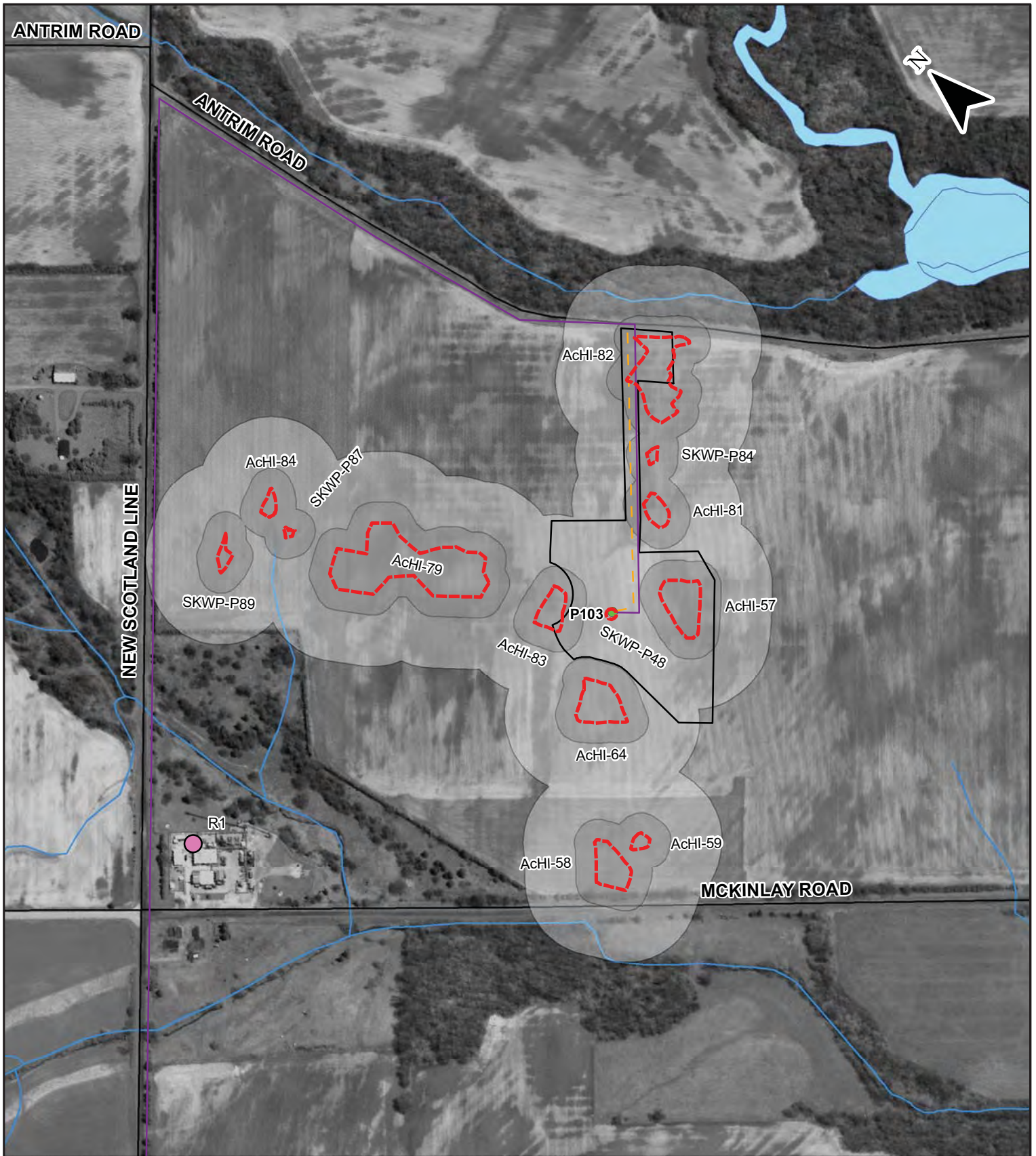
Figure 17: South Kent Wind Project- Archaeological Sites Within Turbine P093



Site Boundary	Turbine (L19R1) Feb 23 2012	Access Road (L19R1) Feb 23 2012
20 metre Protective Buffer (Stage 3 Sites)	Laydown Area (L19R1) Feb 23 2012	Reference Landmark
50 metre Construction Monitoring Zone (Stage 3 Sites)	Collector Line (L19R1) Feb 23 2012	

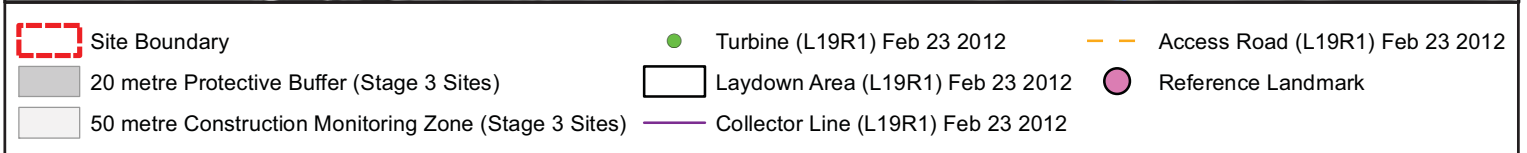
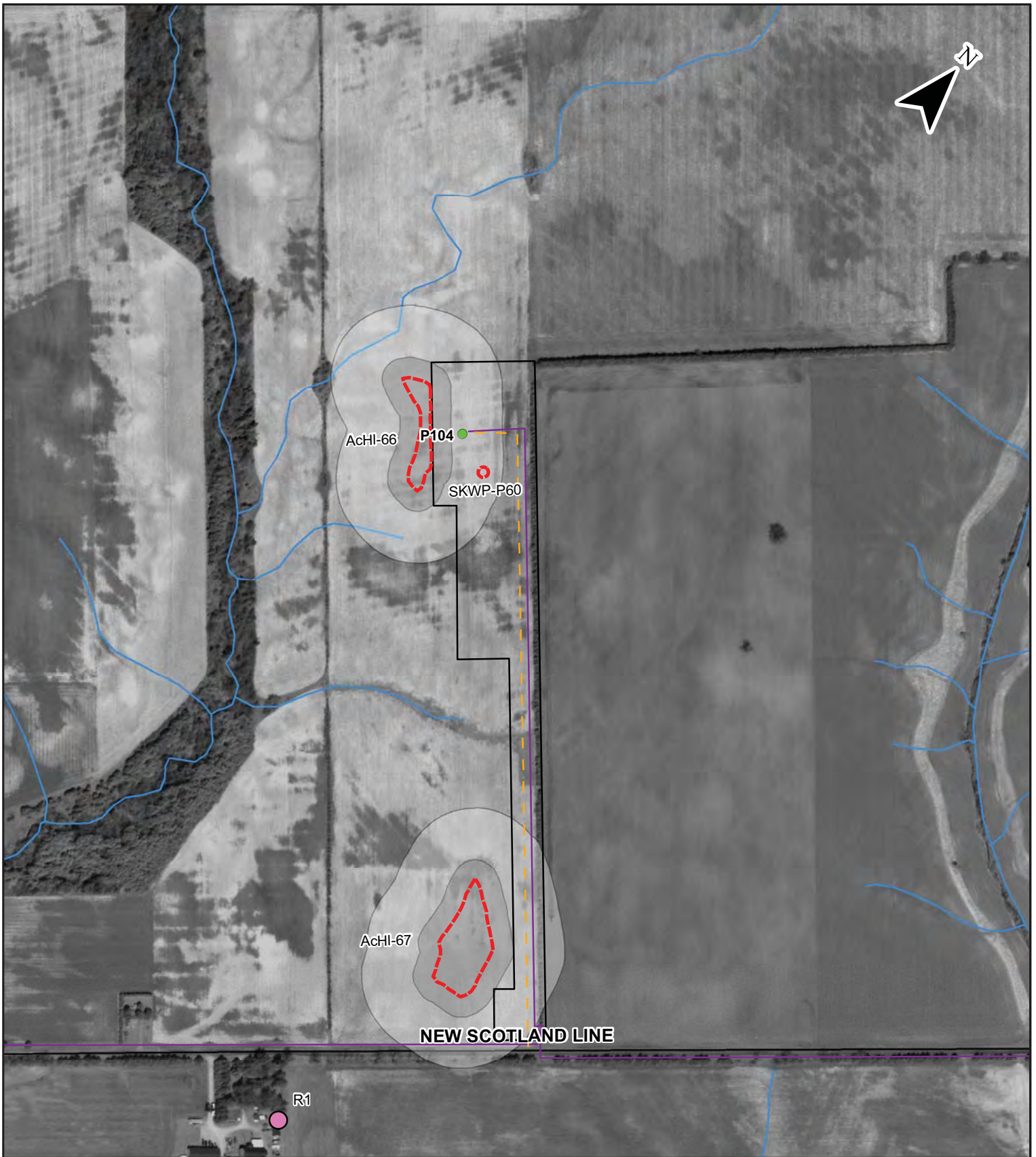
<p>Archaeological Services Inc. 528 Bathurst St. Toronto, Ontario Canada, M5S 2P9 T 416-966-1069 F 416-966-9723 info@IASI.to/www.IAS±.to</p>	<p>BASE: Pattern Wind Energy LIO 2010</p>	<p>0 200 Meters ASI PROJECT NO.: 11EA-258 DATE: Apr 5, 2012 DRAWN BY: B.W. FILE: 11EA-258_Fig18</p>
--	--	--

Figure 18: South Kent Wind Project- Archaeological Sites Within Turbine P097



Archaeological Services Inc. 528 Bathurst St. Toronto, Ontario Canada, M5S 2P9 T 416-966-1069 F 416-966-9723 info@iASI.to/www.iAS±.to	BASE: Pattern Wind Energy LIO 2010	
	ASI PROJECT NO.: 11EA-258 DATE: Apr 5, 2012	DRAWN BY: B.W. FILE: 11EA-258_Fig19

Figure 19: South Kent Wind Project- Archaeological Sites Within Turbine P103





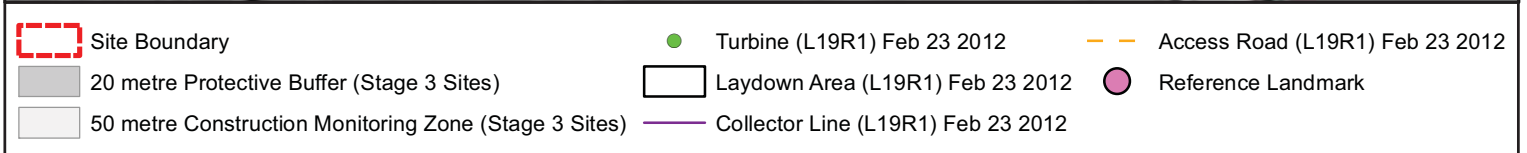
 Archaeological Services Inc. 528 Bathurst St. Toronto, Ontario Canada, M5S 2P9 T 416-966-1069 F 416-966-9723 info@IASI.to/www.IAS±.to	BASE: Pattern Wind Energy LIO 2010	0 200  Meters
		ASI PROJECT NO.: 11EA-258 DATE: Apr 5, 2012

Figure 20: South Kent Wind Project- Archaeological Sites Within Turbine P104




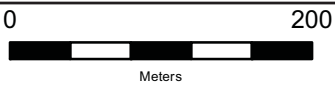
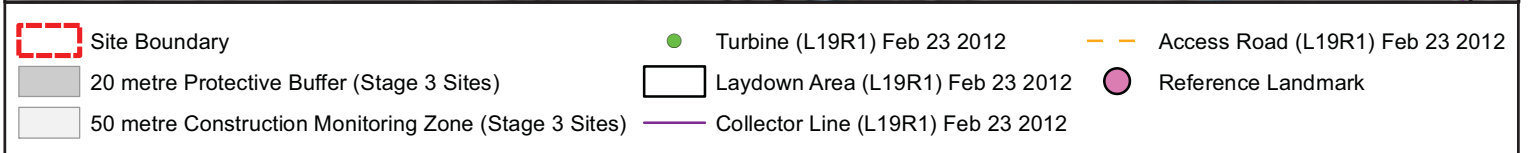
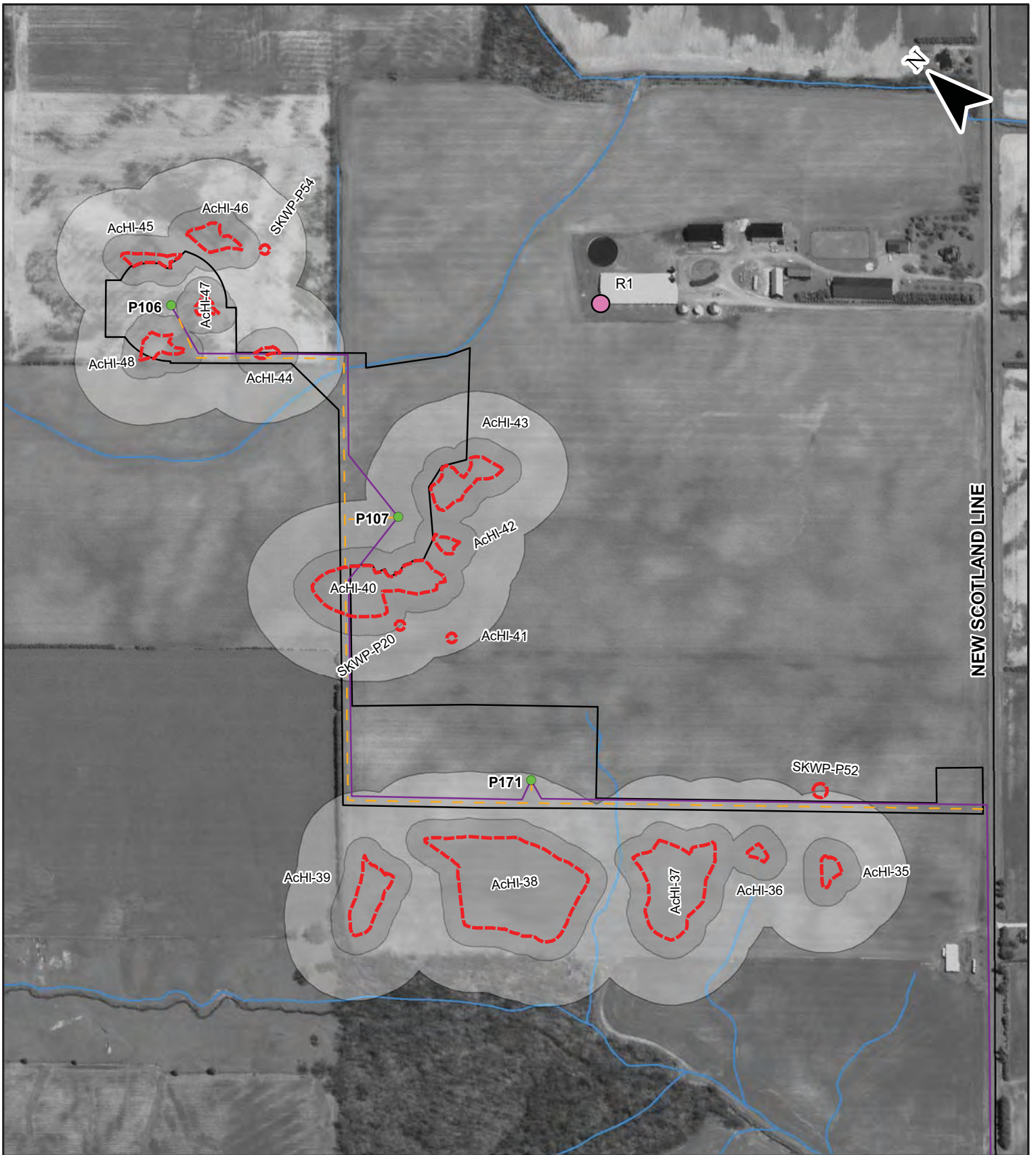
 Archaeological Services Inc. 528 Bathurst St. Toronto, Ontario Canada, M5S 2P9 T 416-966-1069 F 416-966-9723 info@IASI.to/www.iAS±.to	BASE: Pattern Wind Energy LIO 2010	 0 200 Meters
	ASI PROJECT NO.: 11EA-258 DATE: Apr 5, 2012	

Figure 21: South Kent Wind Project- Archaeological Sites Within Turbines P105 and P118



Archaeological Services Inc. 528 Bathurst St. Toronto, Ontario Canada, M5S 2P9 T 416-966-1069 F 416-966-9723 info@IASI.to/www.IAS±.to	BASE: Pattern Wind Energy LIO 2010	0 200 Meters
		ASI PROJECT NO.: 11EA-258 DATE: Apr 5, 2012

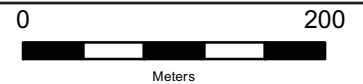
Figure 22: South Kent Wind Project- Archaeological Sites Within Turbines P106, P107 and P171



- Site Boundary
- 20 metre Protective Buffer (Stage 3 Sites)
- 50 metre Construction Monitoring Zone (Stage 3 Sites)
- Turbine (L19R1) Feb 23 2012
- Laydown Area (L19R1) Feb 23 2012
- Collector Line (L19R1) Feb 23 2012
- Access Road (L19R1) Feb 23 2012
- Reference Landmark

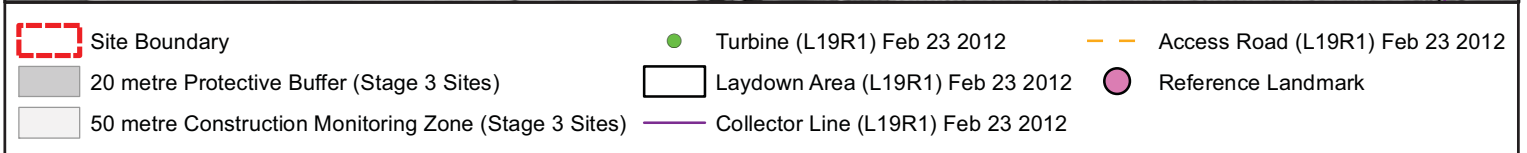
Archaeological Services Inc.
 528 Bathurst St. Toronto, Ontario Canada, M5S 2P9
 T 416-966-1069 F 416-966-9723
 info@IASI.to/www.IAS±.to

BASE:
 Pattern Wind Energy
 LIO
 2010



ASI PROJECT NO.: 11EA-258
 DATE: Apr 5, 2012
 DRAWN BY: B.W.
 FILE: 11EA-258_Fig23

Figure 23: South Kent Wind Project- Archaeological Sites Within Turbine P124





 Archaeological Services Inc. 528 Bathurst St. Toronto, Ontario Canada, M5S 2P9 T 416-966-1069 F 416-966-9723 info@IASI.to/www.IAS±.to	BASE: Pattern Wind Energy LIO 2010	0 200  Meters
		ASI PROJECT NO.: 11EA-258 DATE: Apr 5, 2012

Figure 24: South Kent Wind Project- Archaeological Sites Within Turbine P133



SINCLAIR LINE

R1

SKWP-P43

AcHI-55


SKWP-P45

AcHI-56


P139

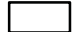
AcHI-54


 Site Boundary


 20 metre Protective Buffer (Stage 3 Sites)


 50 metre Construction Monitoring Zone (Stage 3 Sites)

 Turbine (L19R1) Feb 23 2012

 Laydown Area (L19R1) Feb 23 2012

 Collector Line (L19R1) Feb 23 2012

 Access Road (L19R1) Feb 23 2012

 Reference Landmark



Archaeological Services Inc.

528 Bathurst St. T 416-966-1069
 Toronto, Ontario F 416-966-9723
 Canada, M5S 2P9 info@IASI.to/www.IAS±.to

BASE:

Pattern Wind Energy
 LIO
 2010

0 200

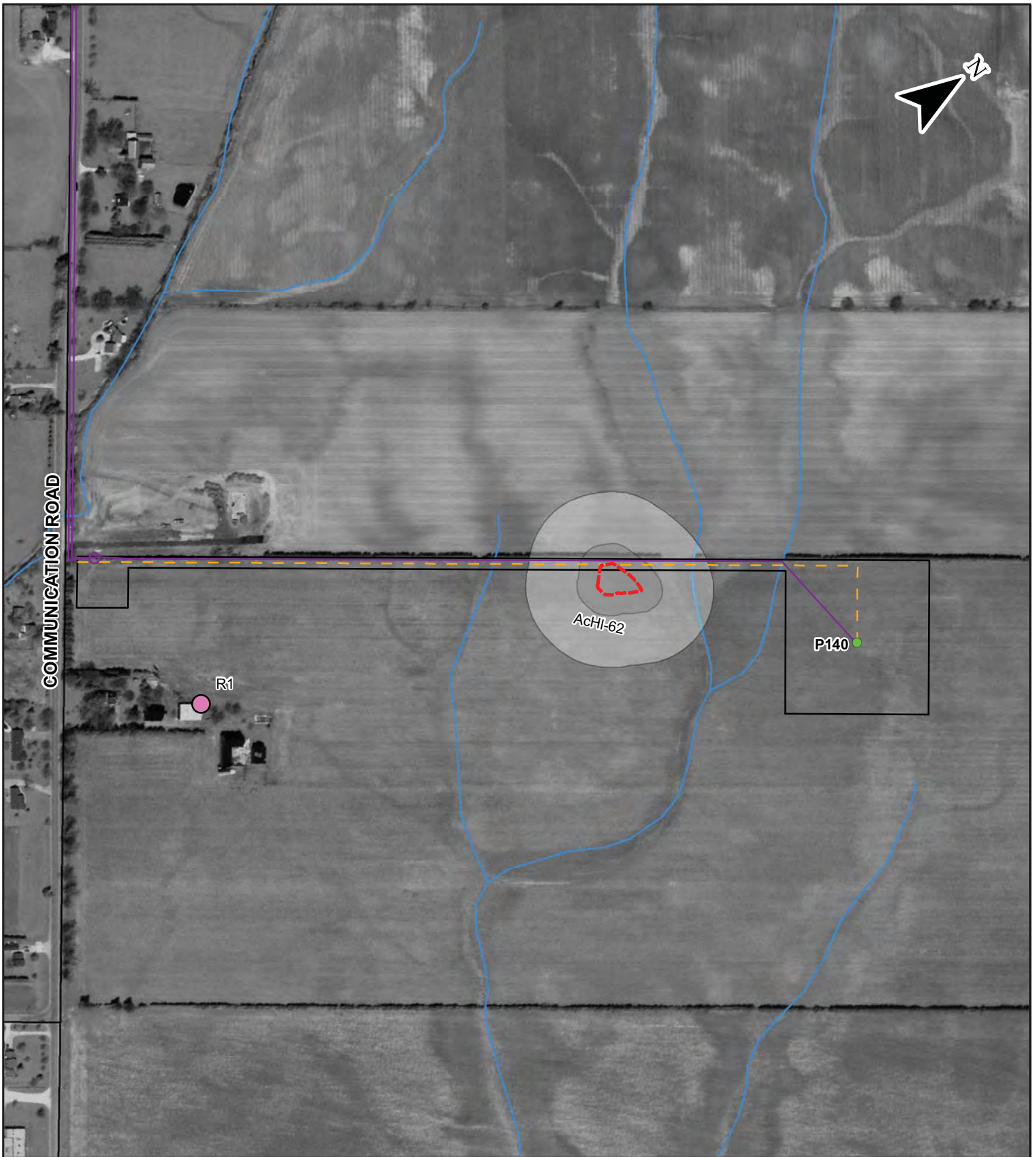


Meters

ASI PROJECT NO.: 11EA-258
 DATE: Apr 5, 2012

DRAWN BY: B.W.
 FILE: 11EA-258_Fig25

Figure 25: South Kent Wind Project- Archaeological Sites Within Turbine P139



- Site Boundary
- 20 metre Protective Buffer (Stage 3 Sites)
- Laydown Area (L19R1) Feb 23 2012
- 50 metre Construction Monitoring Zone (Stage 3 Sites)
- Turbine (L19R1) Feb 23 2012
- Access Road (L19R1) Feb 23 2012
- Reference Landmark
- Collector Line (L19R1) Feb 23 2012

Archaeological Services Inc.
 528 Bathurst St. Toronto, Ontario Canada, M5S 2P9
 T 416-966-1069 F 416-966-9723
 info@IASI.to/www.IAS±.to

BASE:
 Pattern Wind Energy
 LIO
 2010

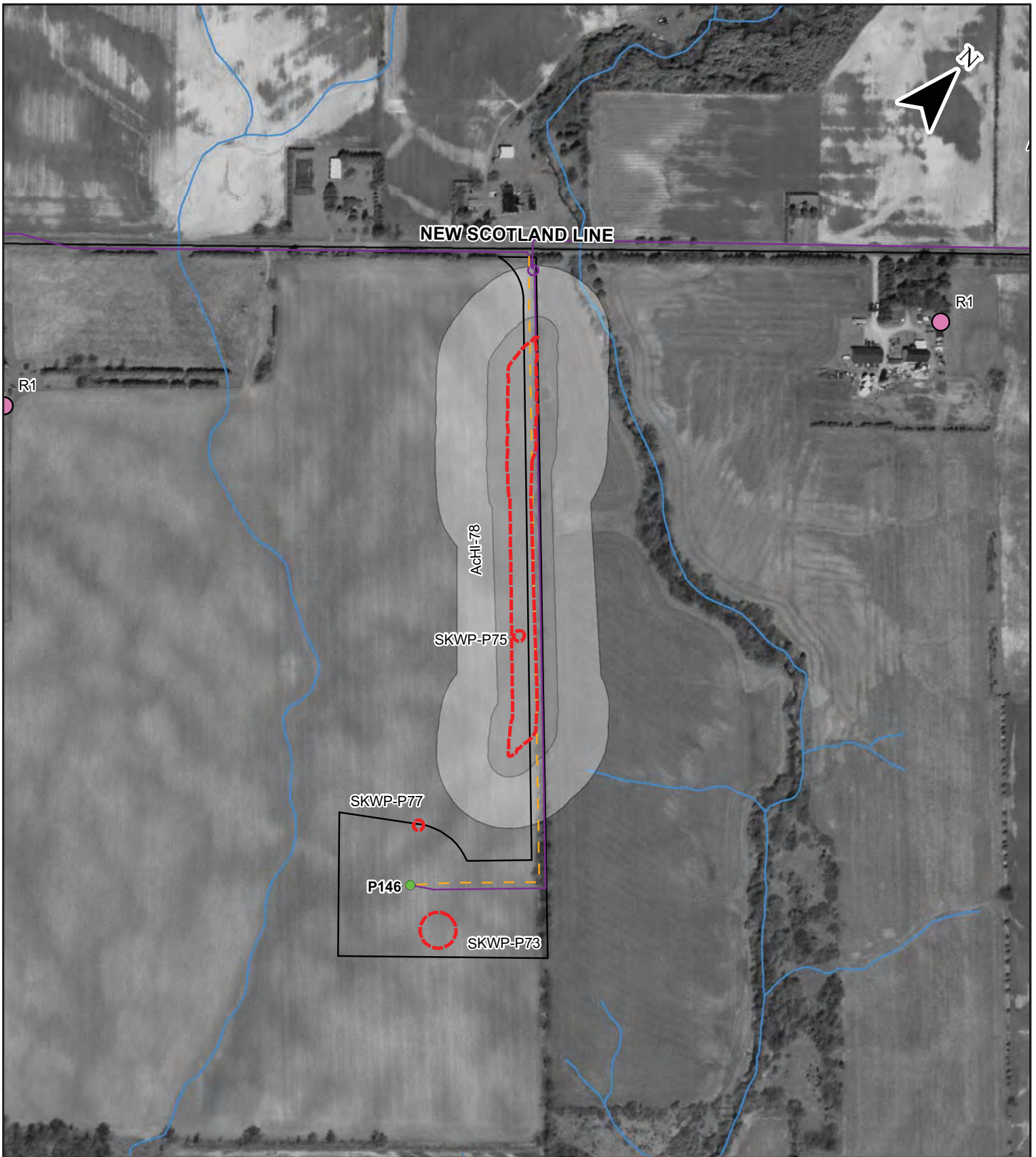
0 200

Meters

ASI PROJECT NO.: 11EA-258
 DATE: Apr 5, 2012

DRAWN BY: B.W.
 FILE: 11EA-258_Fig26

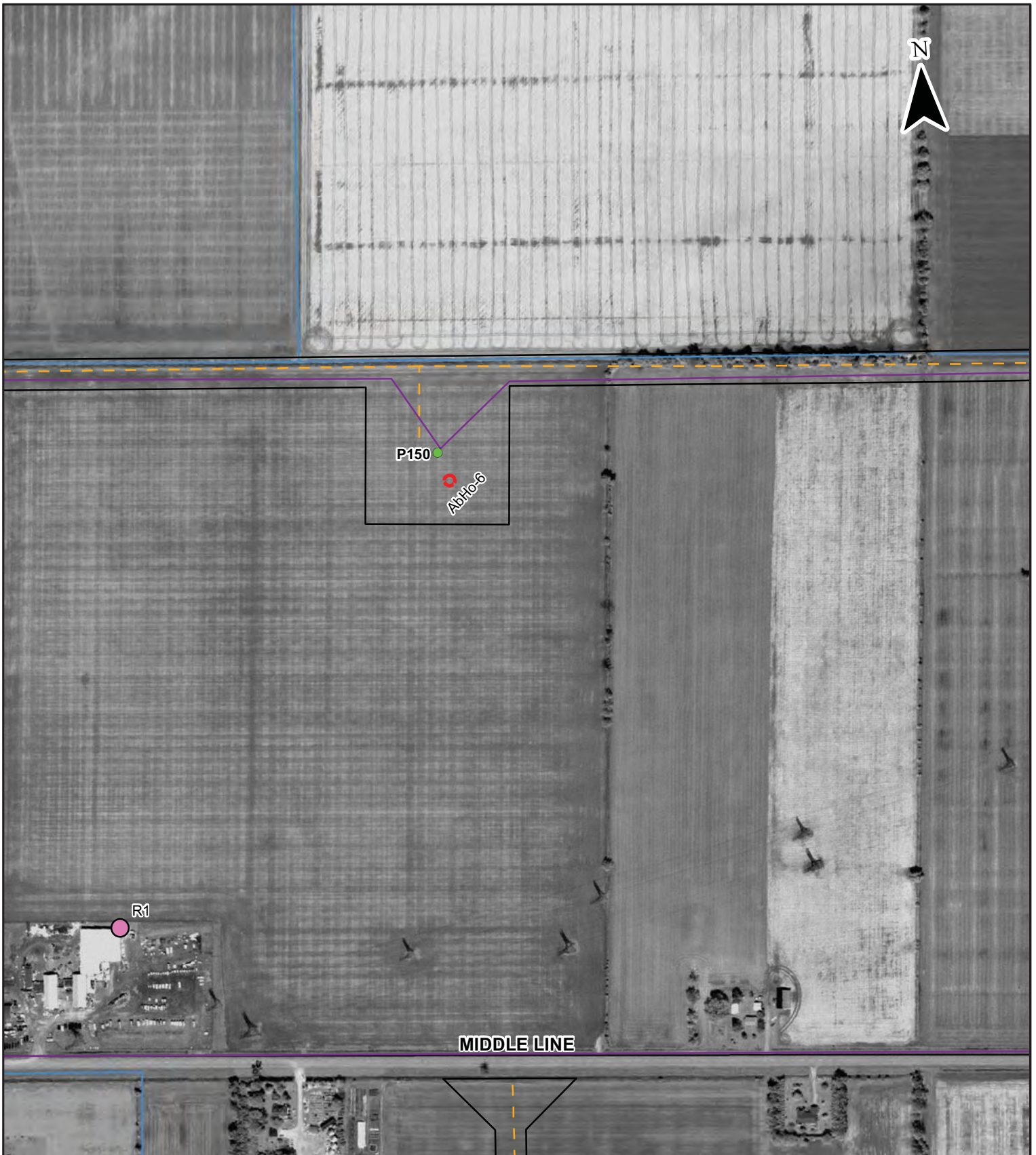
Figure 26: South Kent Wind Project- Archaeological Sites Within Turbine P140



- Site Boundary
- 20 metre Protective Buffer (Stage 3 Sites)
- 50 metre Construction Monitoring Zone (Stage 3 Sites)
- Turbine (L19R1) Feb 23 2012
- Laydown Area (L19R1) Feb 23 2012
- Collector Line (L19R1) Feb 23 2012
- Access Road (L19R1) Feb 23 2012
- Reference Landmark

 <p>Archaeological Services Inc. 528 Bathurst St. Toronto, Ontario Canada, M5S 2P9 T 416-966-1069 F 416-966-9723 info@IASI.to/www.IAS±.to</p>	<p>BASE:</p> <p>Pattern Wind Energy L10 2010</p>	<p>0 200</p>  <p>Meters</p>	<p>ASI PROJECT NO.: 11EA-258 DATE: Apr 5, 2012</p> <p>DRAWN BY: B.W. FILE: 11EA-258_Fig27</p>
	<p>Archaeological Services Inc. logo: a deer silhouette.</p>		

Figure 27: South Kent Wind Project- Archaeological Sites Within Turbine P146



- Site Boundary
- 20 metre Protective Buffer (Stage 3 Sites)
- 50 metre Construction Monitoring Zone (Stage 3 Sites)
- Turbine (L19R1) Feb 23 2012
- Laydown Area (L19R1) Feb 23 2012
- Collector Line (L19R1) Feb 23 2012
- — Access Road (L19R1) Feb 23 2012
- Reference Landmark

Archaeological Services Inc.
 528 Bathurst St. Toronto, Ontario Canada, M5S 2P9
 T 416-966-1069 F 416-966-9723
 info@IASI.to/www.IAS±.to

BASE:
 Pattern Wind Energy
 LIO
 2010

0 200

Meters

ASI PROJECT NO.: 11EA-258
 DATE: Apr 5, 2012

DRAWN BY: B.W.
 FILE: 11EA-258_Fig28

Figure 28: South Kent Wind Project- Archaeological Sites Within Turbine P150



Site Boundary	Turbine (L19R1) Feb 23 2012	Access Road (L19R1) Feb 23 2012
20 metre Protective Buffer (Stage 3 Sites)	Laydown Area (L19R1) Feb 23 2012	Reference Landmark
50 metre Construction Monitoring Zone (Stage 3 Sites)	Collector Line (L19R1) Feb 23 2012	

Archaeological Services Inc. 528 Bathurst St. Toronto, Ontario Canada, M5S 2P9 T 416-966-1069 F 416-966-9723 info@IASI.to/www.IAS±.to	BASE: Pattern Wind Energy LIO 2010	<table border="1"> <tr> <td data-bbox="1027 1885 1312 1963"> </td> <td data-bbox="1320 1885 1572 1963"> 0 200 Meters </td> </tr> <tr> <td data-bbox="1027 1969 1312 2011"> ASI PROJECT NO.: 11EA-258 DATE: Apr 5, 2012 </td> <td data-bbox="1320 1969 1572 2011"> DRAWN BY: B.W. FILE: 11EA-258_Fig29 </td> </tr> </table>		0 200 Meters	ASI PROJECT NO.: 11EA-258 DATE: Apr 5, 2012	DRAWN BY: B.W. FILE: 11EA-258_Fig29
	0 200 Meters					
ASI PROJECT NO.: 11EA-258 DATE: Apr 5, 2012	DRAWN BY: B.W. FILE: 11EA-258_Fig29					

Figure 29: South Kent Wind Project- Archaeological Sites Within Turbine P154



- Site Boundary
- 20 metre Protective Buffer (Stage 3 Sites)
- 50 metre Construction Monitoring Zone (Stage 3 Sites)
- Turbine (L19R1) Feb 23 2012
- Laydown Area (L19R1) Feb 23 2012
- Collector Line (L19R1) Feb 23 2012
- - - Access Road (L19R1) Feb 23 2012
- Reference Landmark

Archaeological Services Inc.
 528 Bathurst St. Toronto, Ontario Canada, M5S 2P9
 T 416-966-1069 F 416-966-9723
 info@IASI.to/www.IAS±.to

BASE:
 Pattern Wind Energy
 LIO
 2010

0 200
 Meters

ASI PROJECT NO.: 11EA-258
 DATE: Apr 5, 2012

DRAWN BY: B.W.
 FILE: 11EA-258_Fig30

Figure 30: South Kent Wind Project- Archaeological Sites Within Turbine P166



- Site Boundary
- 20 metre Protective Buffer (Stage 3 Sites)
- 50 metre Construction Monitoring Zone (Stage 3 Sites)
- Turbine (L19R1) Feb 23 2012
- Laydown Area (L19R1) Feb 23 2012
- Collector Line (L19R1) Feb 23 2012
- Access Road (L19R1) Feb 23 2012
- Reference Landmark

Archaeological Services Inc.
 528 Bathurst St. Toronto, Ontario Canada, M5S 2P9
 T 416-966-1069 F 416-966-9723
 info@IASI.to/www.IAS±.to

BASE:
 Pattern Wind Energy
 LIO
 2010

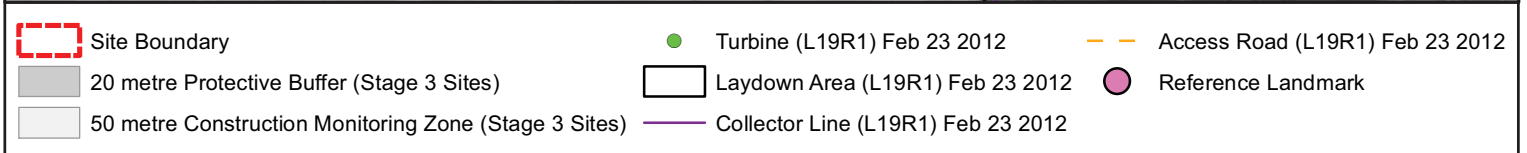
0 200

 Meters

ASI PROJECT NO.: 11EA-258
 DATE: Apr 5, 2012

DRAWN BY: B.W.
 FILE: 11EA-258_Fig31

Figure 31: South Kent Wind Project- Archaeological Sites Within Electrical Connection Layout (CLSA-5)





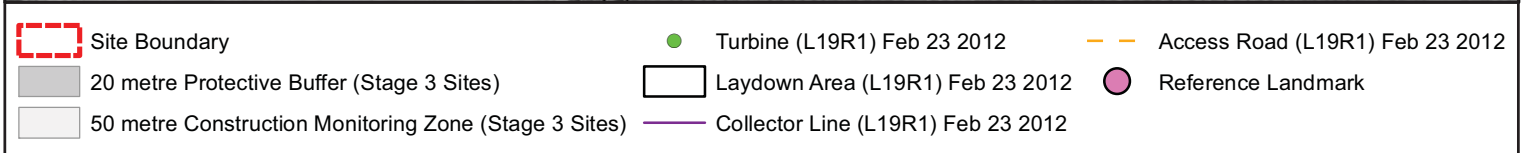
 Archaeological Services Inc. 528 Bathurst St. Toronto, Ontario Canada, M5S 2P9 T 416-966-1069 F 416-966-9723 info@IASI.to/www.IAS±.to	BASE: Pattern Wind Energy LIO 2010	0  100 Meters
	ASI PROJECT NO.: 11EA-258 DATE: Apr 5, 2012	DRAWN BY: B.W. FILE: 11EA-258_Fig32

Figure 32: South Kent Wind Project- Archaeological Sites Within Electrical Connection Layout (CLSA-4)



 **Archaeological Services Inc.**
 528 Bathurst St. Toronto, Ontario Canada, M5S 2P9
 T 416-966-1069 F 416-966-9723
 info@IASI.to/www.IAS±.to

BASE:
 Pattern Wind Energy
 LIO
 2010


0 200

 Meters
 ASI PROJECT NO.: 11EA-258
 DATE: Apr 5, 2012
 DRAWN BY: B.W.
 FILE: 11EA-258_Fig33

Figure 33: South Kent Wind Project- Archaeological Sites Within Electrical Connection Layout (CLSA-4)



- Site Boundary
- 20 metre Protective Buffer (Stage 3 Sites)
- 50 metre Construction Monitoring Zone (Stage 3 Sites)
- Laydown Area (L19R1) Feb 23 2012
- Collector Line (L19R1) Feb 23 2012
- Turbine (L19R1) Feb 23 2012
- Access Road (L19R1) Feb 23 2012
- Reference Landmark

Archaeological Services Inc.
 528 Bathurst St. Toronto, Ontario Canada, M5S 2P9
 T 416-966-1069 F 416-966-9723
 info@IASI.to/www.IAS±.to

BASE:
 Pattern Wind Energy
 LIO
 2010

0 100

 Meters

ASI PROJECT NO.: 11EA-258
 DATE: Apr 5, 2012

DRAWN BY: B.W.
 FILE: 11EA-258_Fig34

Figure 34: South Kent Wind Project- Archaeological Sites Within Former Electrical Connection Layout (CLSA-2)

2.0 GPS COORDINATES FOR SITE LOCATIONS

Facility	Borden #	Field Name	UTM Coordinates (Centre, NAD 83)
TPA-002	AcHI-85	SKWP-H14	17T 0426168 4690694 17T 0426052 4690673 (northeast corner of white barn)
		SKWP-P81	17T 0426162 4690642 [elev. 191]
TPA-029		SKWP-P80	17T 0418420 4692019
TPA-036	AcHm-62	SKWP-H15	17T 0416765 4691124 [elev. 185] 17T 0416792 4691109 (northeast corner of outbuilding)
TPA-103	AcHI-79	SKWP-P82	17T 430932 4690885
	AcHI-81	SKWP-P83	17T 0431130 4690746
		SKWP-P84	17T 0431167 4690786
	AcHI-82	SKWP-P85	17T 0431227 4690836
	AcHI-83	SKWP-P86	17T 0430989 4690754
		SKWP-P87	17T 0430870 4690335
	AcHI-84	SKWP-P88	17T 0430877 4691027
TPA-118		SKWP-P89	17T 0430809 4691026
		SKWP-P78	17T 0428611 4690335
CLSA-4	AcHI-80	SKWP-P79	17T 0428103 4689979
		AcHm-63	SKWP-H16
CLSA-5	AcHm-64	SKWP-P92	17T 0409858 4691274 17T 0409418 4691474 (northeast corner of brown roofed building)
		SKWP-H17	17T 0409223 4693393 [elev. 182] 17T 0409402 4693394 (northeast corner of large U-shaped building)
CLSA-5	AcHm-65	SKWP-P90	17T 0408986 4693032 17T 0409091 4693014 (northeast corner of metal bldg)
	AcHm-66	SKWP-P91	17T 0409028 4693096



3.0 ABORIGINAL ENGAGEMENT IN ARCHAEOLOGY

ASI has designed and implemented an Aboriginal engagement program for the Project that specifically addresses the Aboriginal sites which will be subject to Stage 3 site-specific assessments and subsequent Stage 4 mitigative excavations. This program has been designed to meet all of the requirements of the *Standards and Guidelines for Consultant Archaeologists* as well as the recommendations of the *Draft Technical Bulletin: Engaging Aboriginal Communities in Archaeology*.

Determining Interested Communities

The engagement process involves the following Aboriginal communities:

- Walpole Island First Nation
- Mohawk Council of Akwesasne
- Aamjiwnaang First Nation
- Chippewas of the Thames First Nation
- Chippewas of Kettle and Stony Point
- Caldwell First Nation
- Oneida Nation of the Thames
- Moravian of the Thames
- Munsee-Delaware First Nation
- Métis Nation of Ontario
- Windsor- Essex Métis Council
- Six Nations of the Grand River
- Haudenosaunee Confederacy Council
- Wahta Mohawks
- Mohawks of the Bay of Quinte

The named nations are currently involved in engagement with respect to other regional projects and have designated appropriate representatives and contact persons, who will likely also fulfill a similar role with respect to this project.

Initial Notification Letter and Direct Contact

On November 8, 2011, ASI circulated initial notification letters to the Aboriginal communities listed above. The letter provided an introduction to the Aboriginal engagement program and invited representatives to attend a meeting on December 1, 2011.

The meeting on December 1, 2011 was attended by Mr. Dean Jacobs of Walpole Island First Nation (WIFN). A follow-up meeting was held on March 6, 2012 with representatives of WIFN to discuss their interests including a request for regular meetings to discuss the Stage 3 and 4 archaeological assessments being undertaken for the project.

A meeting was organized on December 21, 2011 with Mr. Paul General from Six Nations of the Grand River who expressed an interest in providing monitors for the Stage 3 and 4 archaeological investigations. Follow-up communication between Mr. General and Pattern Energy is anticipated.



A response to ASI's initial notification letter was received from Mr. Raymond Deleary of Chippewas of the Thames First Nation. This letter was dated to January 25, 2012 and expressed an interest in discussing the potential impact of the project. Given this interest is beyond the scope of the Aboriginal engagement program, the letter has been forwarded to Pattern Energy.

Future Steps

ASI will continue to carry-out the necessary tasks for the Aboriginal engagement program including setting up follow-up meetings and providing update letters thereby ensuring that Aboriginal communities are well informed and engaged.



4.0 WORKS CITED

Archaeological Services Inc. (ASI)

- 2012 Additional Stage 2 Property Assessment, South Kent Wind Project, Romney, East Tilbury, Raleigh, Harwich and Howard Townships, Former Kent County, Municipality of Chatham-Kent, Ontario. Report on file, MTCS, Toronto.

